

Adjustable Windshield System

Honda CTX1300

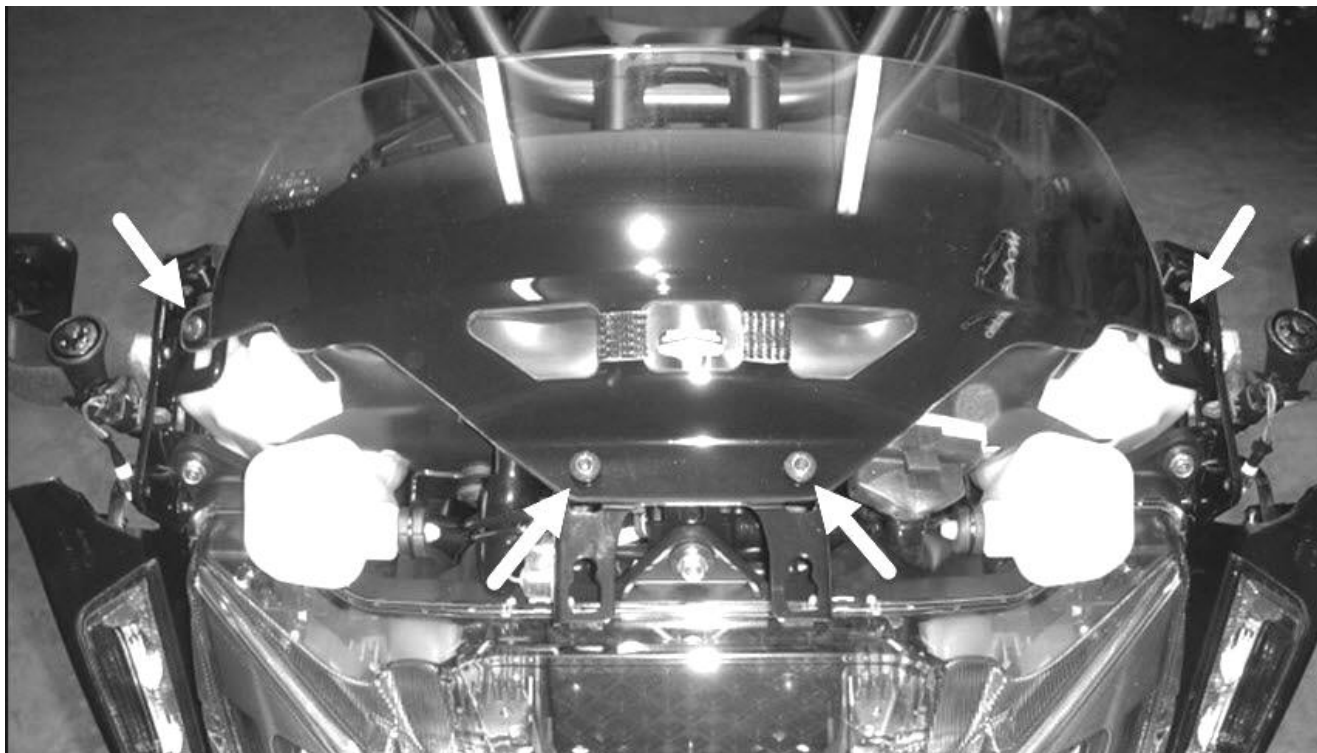
Please read this entire manual before proceeding with installation.

What is in the box:

- (1) Set of preassembled Robo Knob adjustable windshield brackets
- (1) Black aluminum mounting plate
- (4) M5 well nuts with oversized washers attached
- (4) M6 x 12 mounting screws
- (4) M6 flat washers
- (4) M6 lock nuts
- (4) M5 truss screws
- (4) M5 plastic washers (for truss screws)
- (4) soft rubber washers (for truss screws)

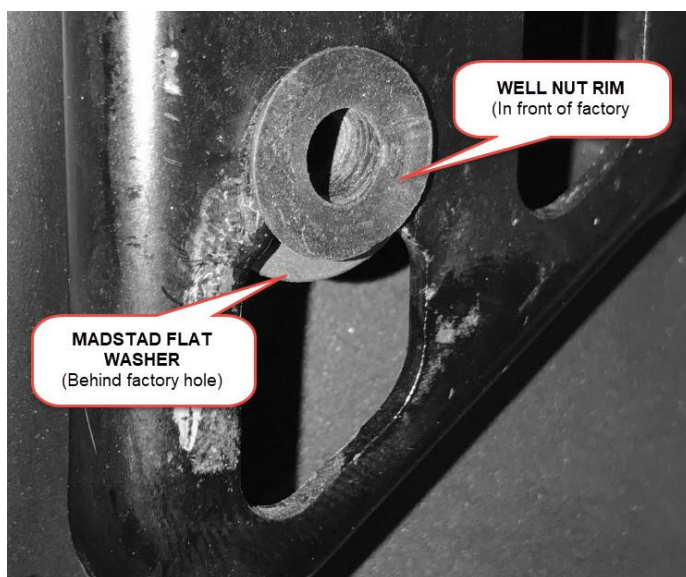
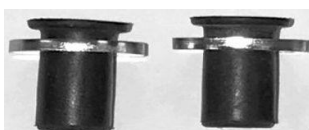


You will need to remove your factory windshield; it is not adaptable for use with these brackets. Please see the separate Windshield Removal guide as it is a fairly involved procedure. If you are unsure of your ability to perform it, contact your local Honda dealer and ask if they will install our system for you.



PREPARATION

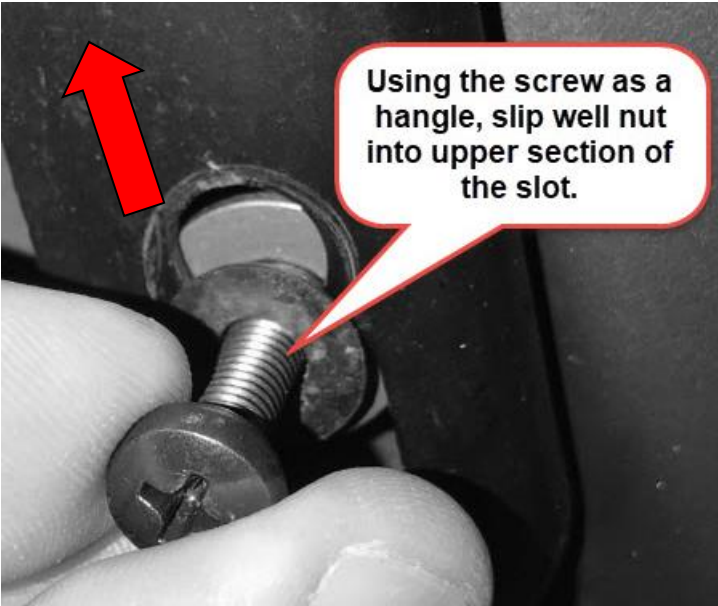
You **must** replace the factory rubber well nuts (where the windshield screws thread in) with our new ones which have a special **oversized flat washer** on the back side (see below). Our oversized washer goes behind the factory bracket and prevents the well nuts from pulling out. The procedure here shows you how to get these into the top of the factory holes by inserting from the front.



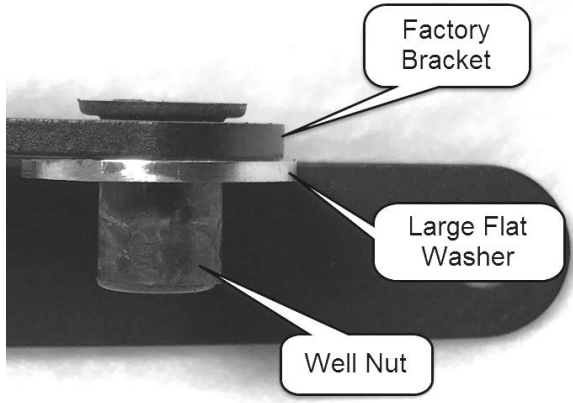
STEP 1: Thread a factory windshield screw (or one of our windshield screws) into the top of the well nut, just a few turns so that it can serve as a handle. While holding the screw, insert the well nut into the larger section of the factory hole and tilt the nut and washer diagonally to slip it into the hole as shown at right. Do not let go of the screw!



STEP 2: Position the well nut evenly so that you can slide it up into the top (round) portion of the hole as shown at right. If the washer is right up against the head of the well nut then pull up gently on the screw to separate them slightly so you can create a little space to slide them up. The top (rim) of the well nut should rest on the front of the bracket hole and the metal washer is right at the back. The flat side of the washer is there to give you a bit of clearance where the factory bracket comes close to the mounting hole.

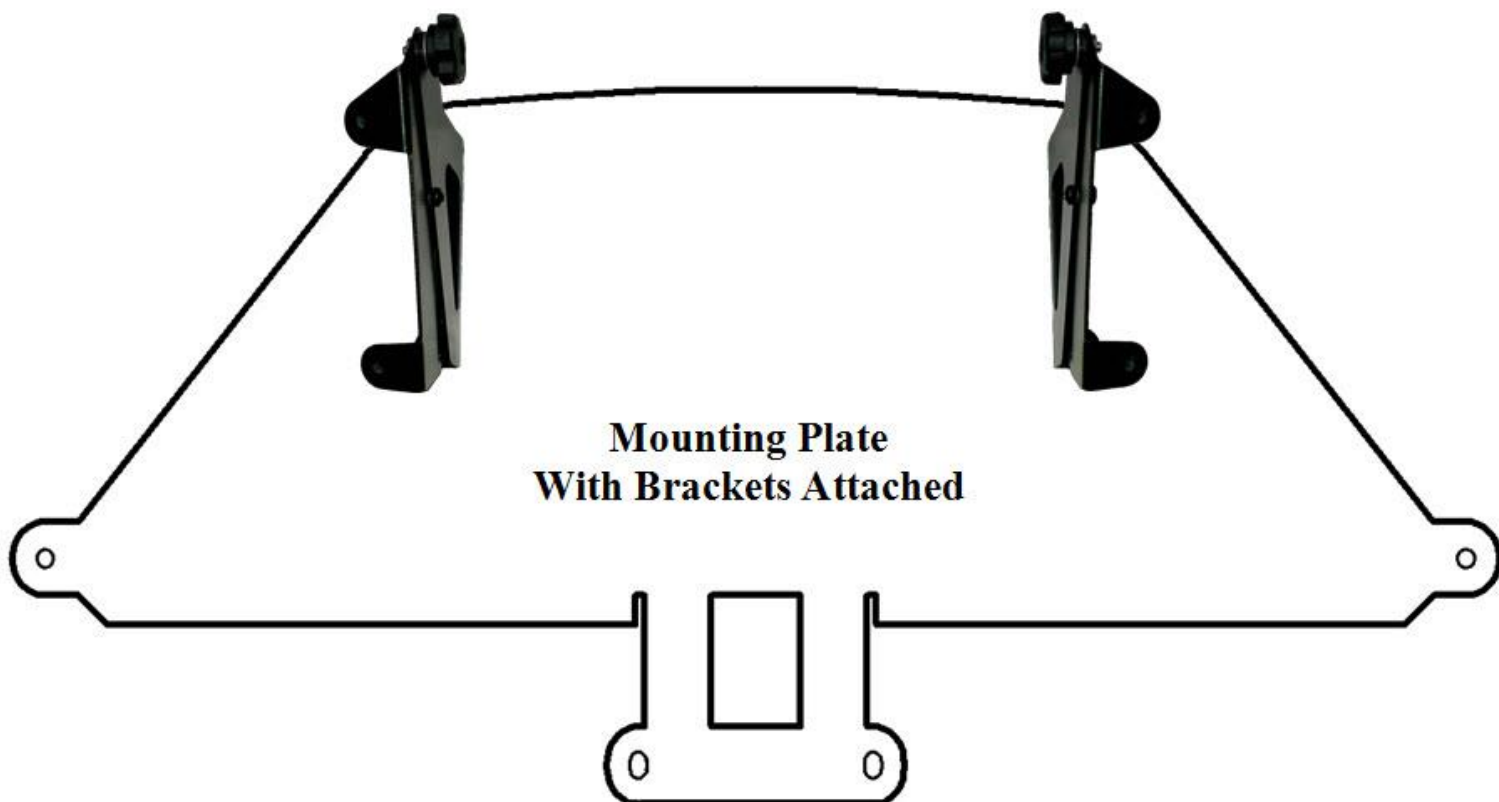
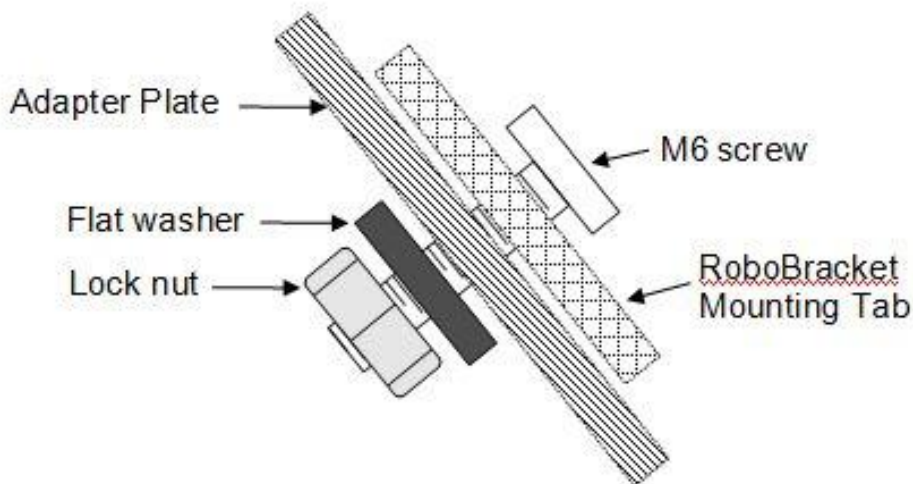


The final result should look like these photos:



Bracket Installation:

Your Robo Knob brackets attach to the MadStad mounting plate as shown below. Use the four M6 x 16 screws with washers and lock nuts as shown in the diagram at right. The brackets get installed with the adjustment knobs up at the top of the mounting plate and facing inward toward each other. The diagram below shows what this should look like.

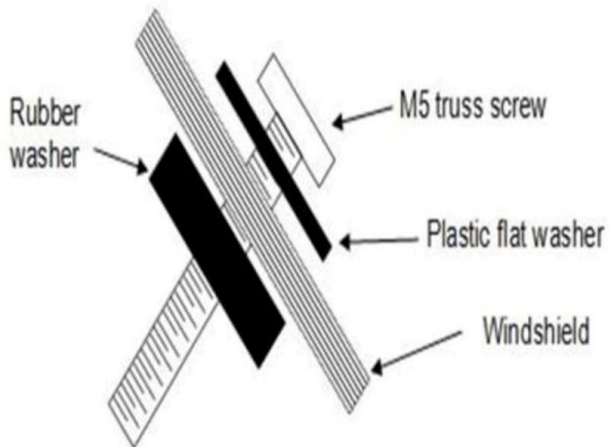


Once you have the brackets bolted to the mounting plate, you can bolt the plate onto the bike in place of the stock shield, using the same screws that were holding the stock shield on. After that you will need to replace the factory body parts which were removed to access the windshield holes.

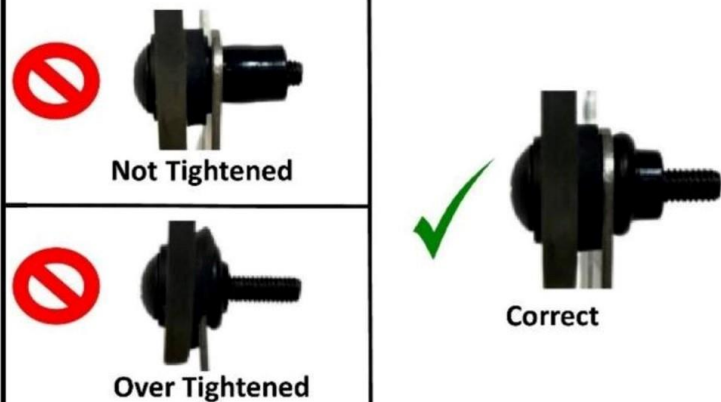
Windshield Installation

1. Pre-install the Truss screws & washers into the windshield holes as shown in the image below.
2. Once all four of the screws are in place, gently guide the screws into the Well Nuts in the brackets until all four are set.
3. Hand tighten the Truss screws until they swell up behind the bracket and are firmly holding the windshield.

Windshield Layout:



Well Nut Tips:



****HAND TIGHTEN****

Adjusting the Brackets

The knob screws release the brackets allowing the windshield to slide and tilt. These knob screws must always be tightened securely before riding. **DO NOT** attempt to adjust the brackets while riding! You must come to a complete stop before making adjustments. Also make sure that you do not set the windshield in such a way that causes your handlebars or hand guards (if installed) to hit the windshield when turning, or before reaching full lock.

To make adjustments, loosen the knobs 1-2 turns and set the windshield so the top edge is at about your chin level as you look straight ahead while seated on the bike. Set the angle at approximately 60 degrees. (Use the angle guide on the back page of this manual as a guide.) Tighten the knobs and go for a ride to see if you now have smooth airflow over and around your helmet. Do this on a calm day if at all possible; windy days make it hard to judge the airflow. Don't ever try to adjust the mount while in motion!

Most windshields work best when set at a 55-60 degree angle. We have provided an angle guide **on the back page of this manual** so that you can check and see if your shield is set somewhere in this range. Set the spine (folded edge) of the manual against the front of the shield. If the large arrow marked 60° is pointing straight up, then your shield is at a 60 degree angle, and that will be a good starting position. Everybody's riding position is a bit different so feel free to experiment with the height and angle until you find the windshield position that is most comfortable for you.

PIVOT SCREWS

The MadStad mount has a pivot screw on each set of brackets, located near the center of the bottom bracket. A nylon lock nut keeps the screw snugly in place, yet allows the brackets to slide back and forth. It is adjusted at the factory to have a minimum of play yet still allow the brackets to move.

If for some reason you wish to adjust the tightness of this pivot screw or move it to an alternate pivot position, use a 4mm Allen wrench along with a 10mm socket or crescent wrench to make the adjustment. If you tighten the lock nut completely you will not be able to slide the brackets.

Disclaimer

Neither MadStad Engineering nor its owners shall be liable for any damages, consequential or inconsequential, resulting from the use of our products. Installation of any of our products constitutes acceptance of these terms.

It is the responsibility of the user to make sure all fasteners are tightened securely, the windshield is mounted properly and the adjustment knobs are tightened snugly before putting the motorcycle in motion. MadStad systems ARE NOT intended to be adjusted while the vehicle is in motion; you must pull over out of the way of traffic and come to a complete stop before making any changes. The user must never place the windshield in such a position as to interfere with the safe and complete movement of the handlebars and controls.

Returns and Warranty

MadStad adjustable brackets carry a lifetime warranty against manufacturing defects. This does not include cosmetic issues nor any parts that inherently wear out or degrade over time such as rubber and plastic parts. Windshields, deflectors, and other similar plastic parts are warranted for 1 year against manufacturing defects, not against cosmetic issues or issues related to normal wear and tear. Please visit our website for further details.

MadStad Engineering, Inc.

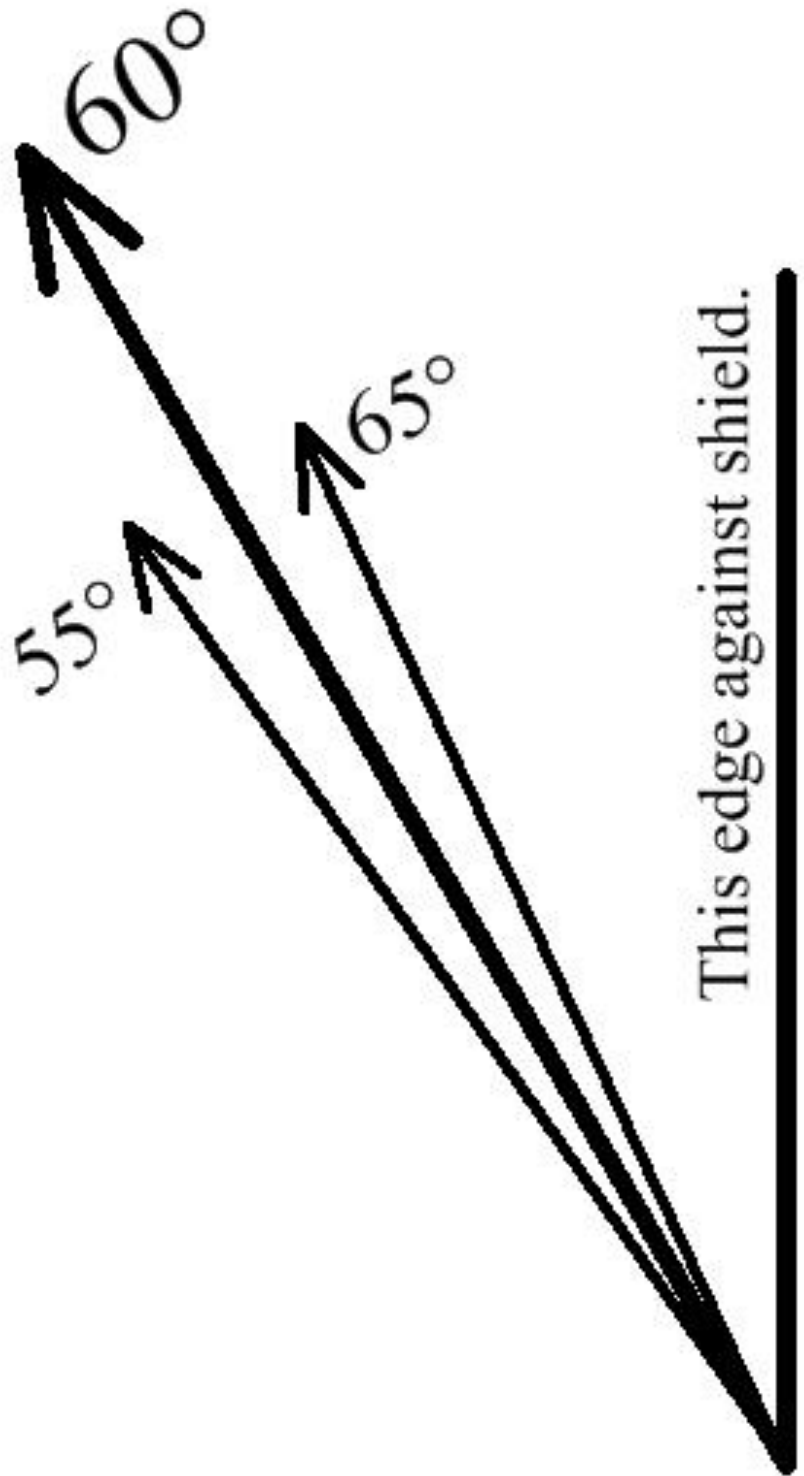
1451 East Jefferson Street
Brooksville, Florida 34601 U.S.A.

Phone: 352-848-3649

Web Site: <http://www.madstad.com>

Email: support@madstad.com

Thank you for your support, and ride safely!



April 12, 2018