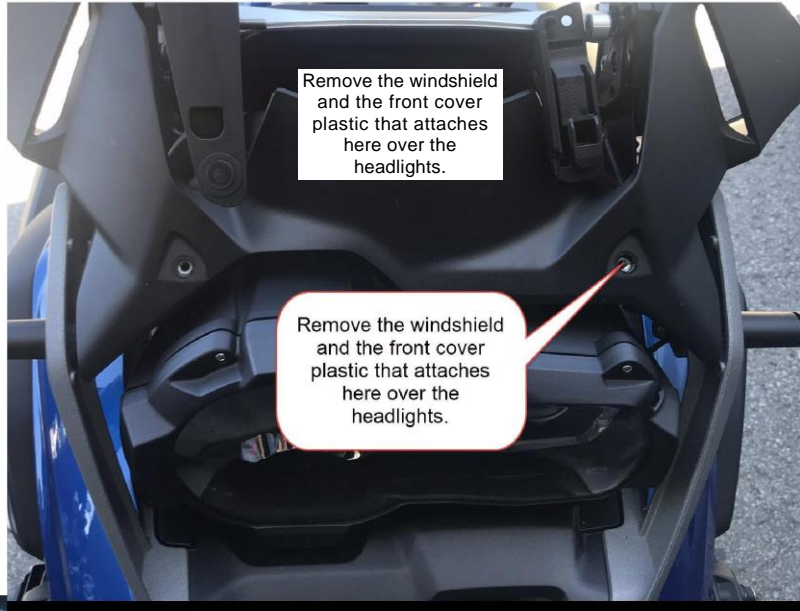


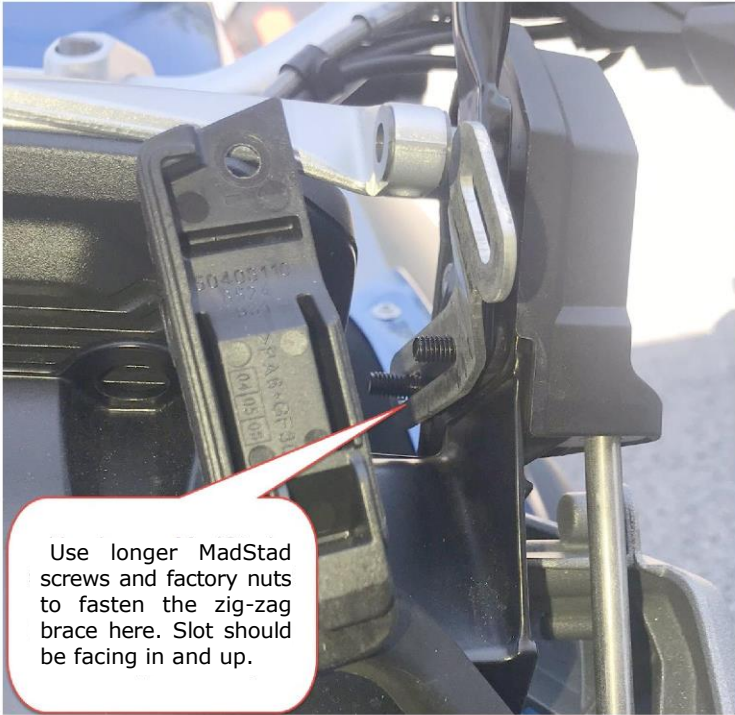
MadStad R1200GSA Support Brace Instructions



Remove the factory screws that hold this aluminum arm to the windshield brackets.



(Quick pictorial version)



Once the braces are in on both sides and all fasteners are tightened, the factory height-adjust mechanism won't work anymore.

Install the MadStad brackets to the factory windshield brackets with screws nuts as shown below (and per the MadStad instruction manual). Then install the windshield and use the MadStad brackets for height and angle adjustment.

