



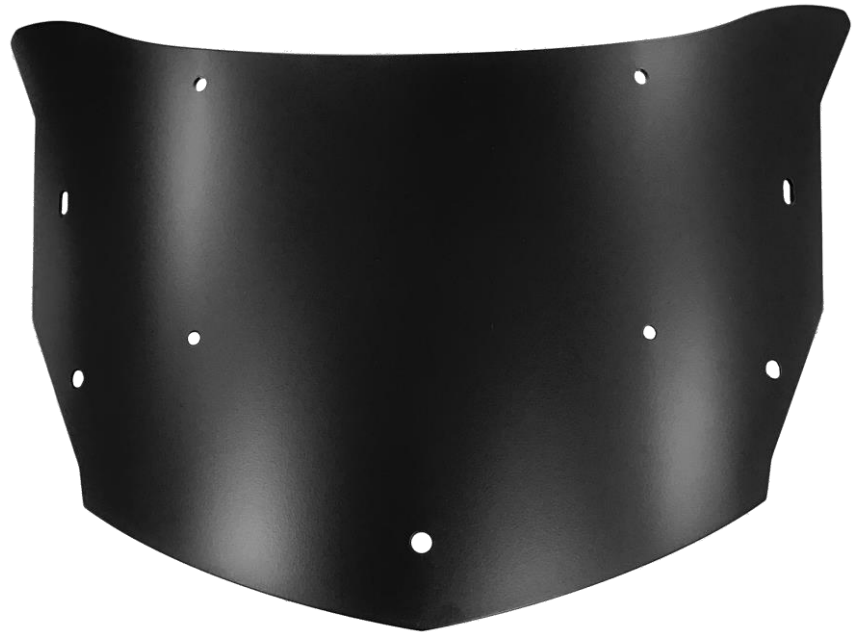
Adjustable Windshield System

BMW F800GT

Please read this entire manual before proceeding with installation.

What is in the box:

- (1) Set of preassembled MadStad adjustable windshield brackets
- (1) Black aluminum base plate
- (2) Rear supports
- (4) M6 x 12 screws
- (2) M6 x 16 screws
- (11) M6 flat washers
- (6) M6 lock nuts
- (3) M6 x 35 screws
- (3) 3/8" thick plastic spacers
- (3) small rubber o-rings
- (4) M5 truss screws
- (4) M5 plastic washers
- (4) soft rubber washers
- (2) M5 clip nuts (spares)



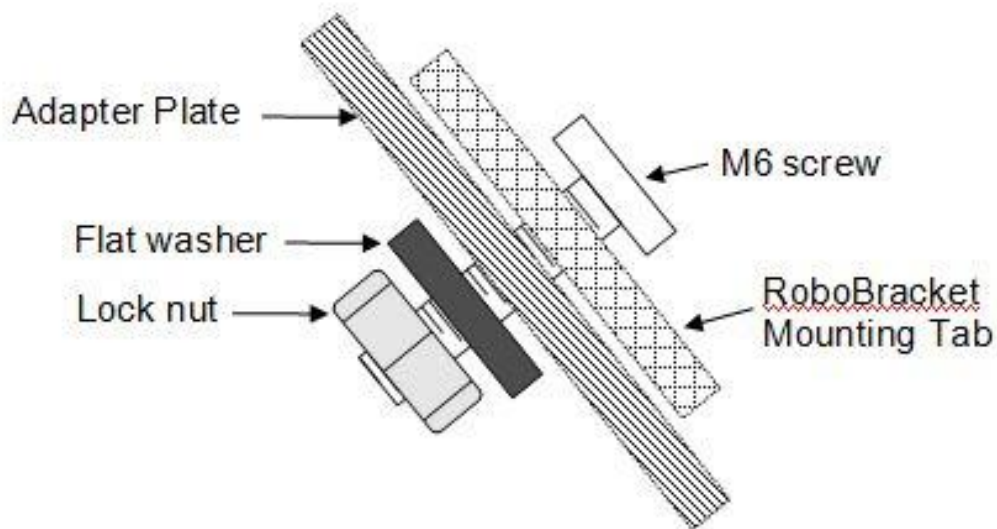
MadStad adjustable brackets are designed to bolt to a curved surface like the metal base plate included in this kit. The new windshield attaches to the brackets with Phillips screws. Loosening the two adjustment knobs allow you to change the windshield height and angle without getting off of the bike, and without any tools.

Factory Windshield Removal

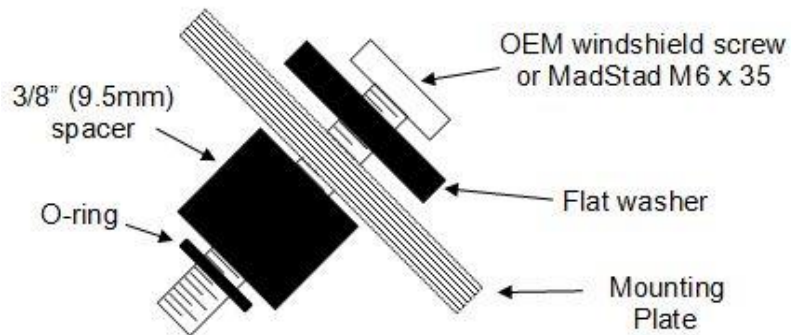
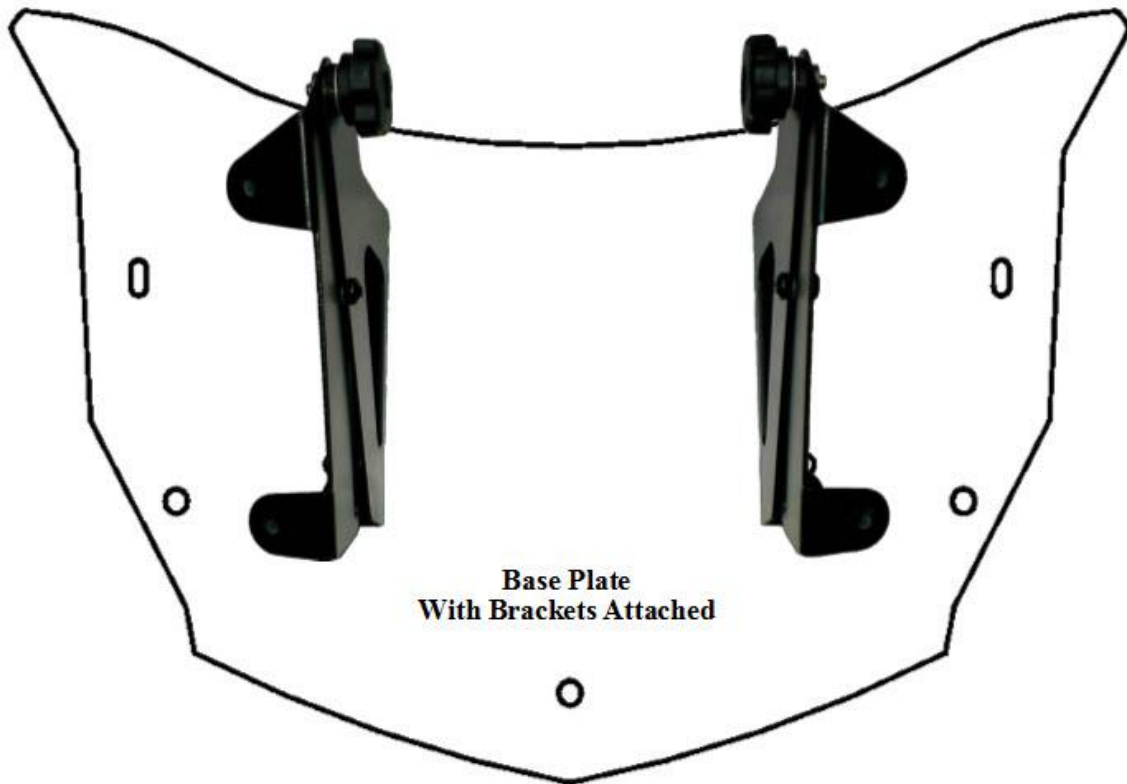
You will need to remove your factory windshield; it is not adaptable for use with these brackets. **Please see the supplemental instruction pages for removal of your factory windshield.**

Bracket Installation

The MadStad brackets attach to the aluminum base plate as shown on page 3. Use the four M6 x 12 screws with washers and lock nuts (as shown in the diagram below) to attach the brackets to the plate.



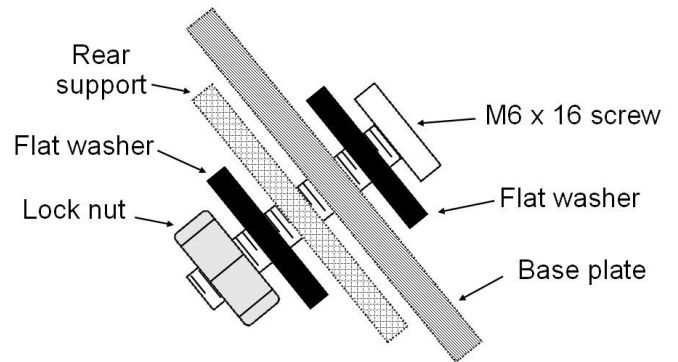
The knobs on the brackets go to the insides (facing each other) with the knob sides up. When both brackets are installed it should look like the diagram below:



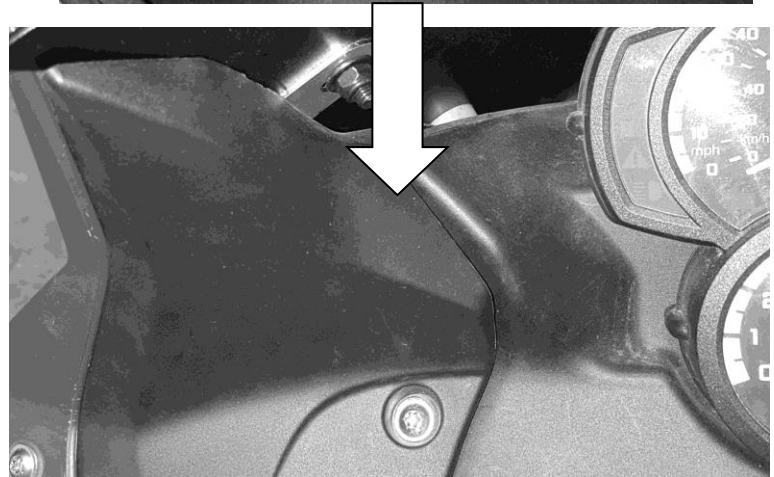
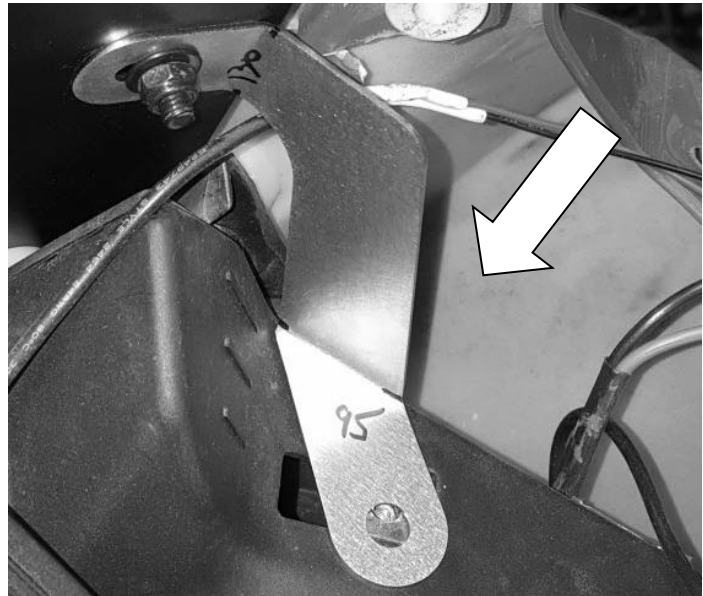
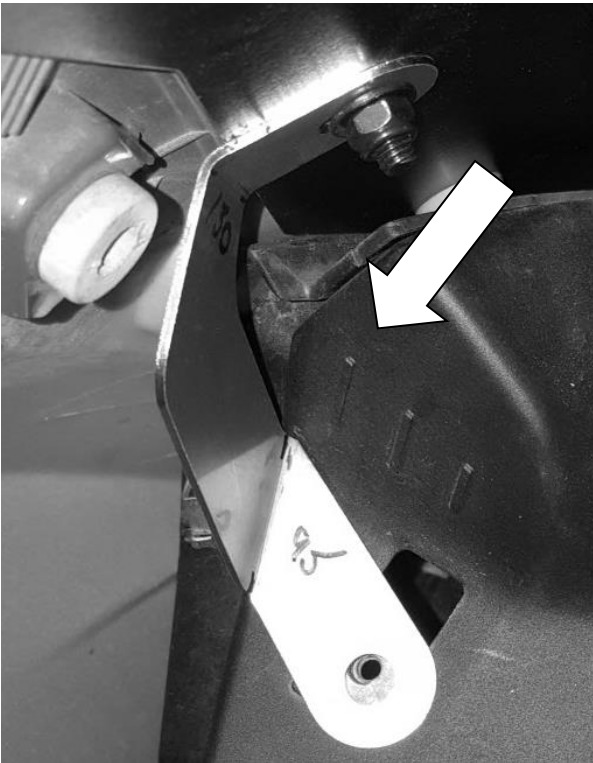
The base plate then attaches to the fairing in place of the stock shield. At the three bottom holes, use the hardware as shown above. Pre-install the screws, washers and spacers onto the base plate. The o-rings will hold them in place. Lay this plate with hardware over the fairing just like the stock shield, then fasten the bottom screws with a Philips-head screwdriver.

Rear Supports

The base plate is supported from the rear by the two black brackets included in your kit. The oval slots on the brackets attach to the oval slots on the base plate with the hardware as seen at right, but don't fully tighten. The slots are there for you to adjust the brackets so that the round holes at bottom of the rear supports overlap the factory fairing holes as shown in the photos below. They have to align so that you can get the plastic covers back on.

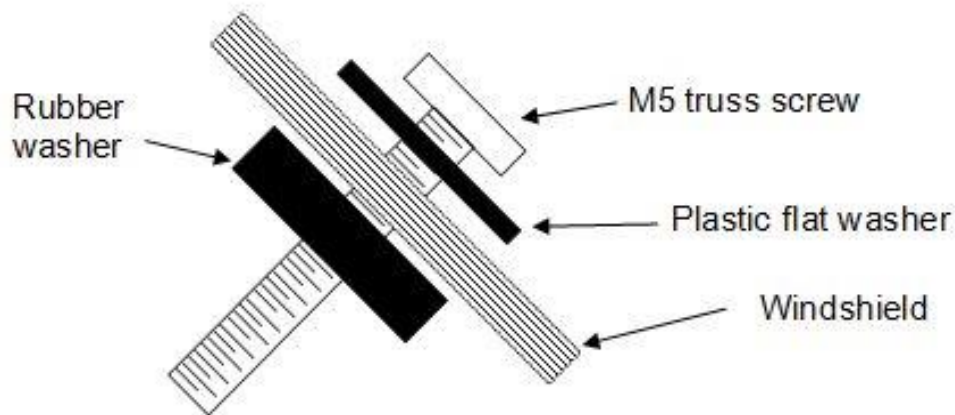


Once you have achieved this alignment go ahead and tighten the braces to the base plate (see diagram at right) then replace the factory plastic panels. The factory panel screws need to run through those two rear supports and into the metal clip nuts. If the factory clip nuts fall out or are uncooperative, we've provided two spares that should be stiffer and should stay in place better.



Windshield Installation

Once bracket adjustment is complete, the windshield attaches to the brackets with truss screws (slim Phillips head) and rubber washers as shown at below. Insert all four screws and washers into the four windshield holes as shown at right before attempting to attach the windshield onto the brackets. We recommend that you first install the upper and lower screws on one side, then install the upper and lower screws on the other side. The rubber well nuts are flexible and shield holes are oversized so you can nudge the shield around to align the screws with the holes properly.



DO NOT OVERTIGHTEN THE T-SCREWS! The rubber well nuts cannot be pulled up out of the brackets, even if they are not tight, so tighten only until the well nuts begin to swell up and the shield is snug against the brackets. Over tightening can damage the rubber well nuts.

Adjusting the MadStad Brackets

The knob screws release the brackets allowing the windshield to slide and tilt. These knob screws must always be tightened securely before riding. **DO NOT** attempt to adjust the brackets while riding! You must come to a complete stop before making adjustments and make sure that you do not set the windshield in such a way that causes your handlebars or hand guards (if installed) to hit the windshield when turning, or before reaching full lock.

To make adjustments, loosen the knobs 1-2 turns and set the windshield so the top edge is at about your chin level as you look straight ahead while seated on the bike. Set the angle at approximately 60 degrees. (Use the angle guide on the back page of this manual or an inclinometer smart phone app.)

Tighten the knobs and go for a ride to see if you now have smooth airflow over and around your helmet. Do this on a calm day if at all possible; windy days make it hard to judge the airflow. Don't ever try to adjust the mount while in motion!

To try a different windshield position, bring the motorcycle to a complete stop and out of traffic. Loosen the two knob screws and tilt the windshield forward or back 2-3 degrees or so, and/or adjust it up or down if necessary. Re-tighten the knobs and go for another test ride.

Continue experimenting with different positions at different speeds until you find a combination of height and rake angle that eliminates buffeting and gives a smoother ride. You may have more than one favorite position, for example shield tilted forward on cooler days, and shield tilted back for hot days to let more air to your body.

PIVOT SCREWS

The MadStad mount has a pivot screw on each set of brackets, located near the center of the bottom bracket. A nylon lock nut keeps the screw snugly in place, yet allows the brackets to slide back and forth. It is adjusted at the factory to have a minimum of play yet still allow the brackets to move.

If for some reason you wish to adjust the tightness of this pivot screw or move it to an alternate pivot position, use a 4mm Allen wrench along with a 10mm socket or crescent wrench to make the adjustment. **NOTE:** If you tighten the lock nut completely you will not be able to slide the brackets!

Disclaimer

Neither MadStad Engineering nor its owners shall be liable for any damages, consequential or inconsequential, resulting from the use of our products. Installation of any of our products constitutes acceptance of these terms.

It is the responsibility of the user to make sure all fasteners are tightened securely, the windshield is mounted properly and the adjustment knobs are tightened snugly before putting the motorcycle in motion. MadStad systems ARE NOT intended to be adjusted while the vehicle is in motion; you must pull over out of the way of traffic and come to a complete stop before making any changes. The user must never place the windshield in such a position as to interfere with the safe and complete movement of the handlebars and controls.

Returns and Warranty

If you are not satisfied with your new windshield system you have 30 days to return it. Full details are available on our web site at www.madstad.com. If purchased from a dealer then please contact the dealer for their return policy.

MadStad adjustable brackets carry a lifetime warranty against manufacturing defects. This does not include cosmetic issues nor any parts that inherently wear out or degrade over time such as rubber and plastic parts. Windshields, deflectors and other similar plastic parts are warrantied for 1 year against manufacturing defects, not against cosmetic issues or issues related to normal wear and tear.

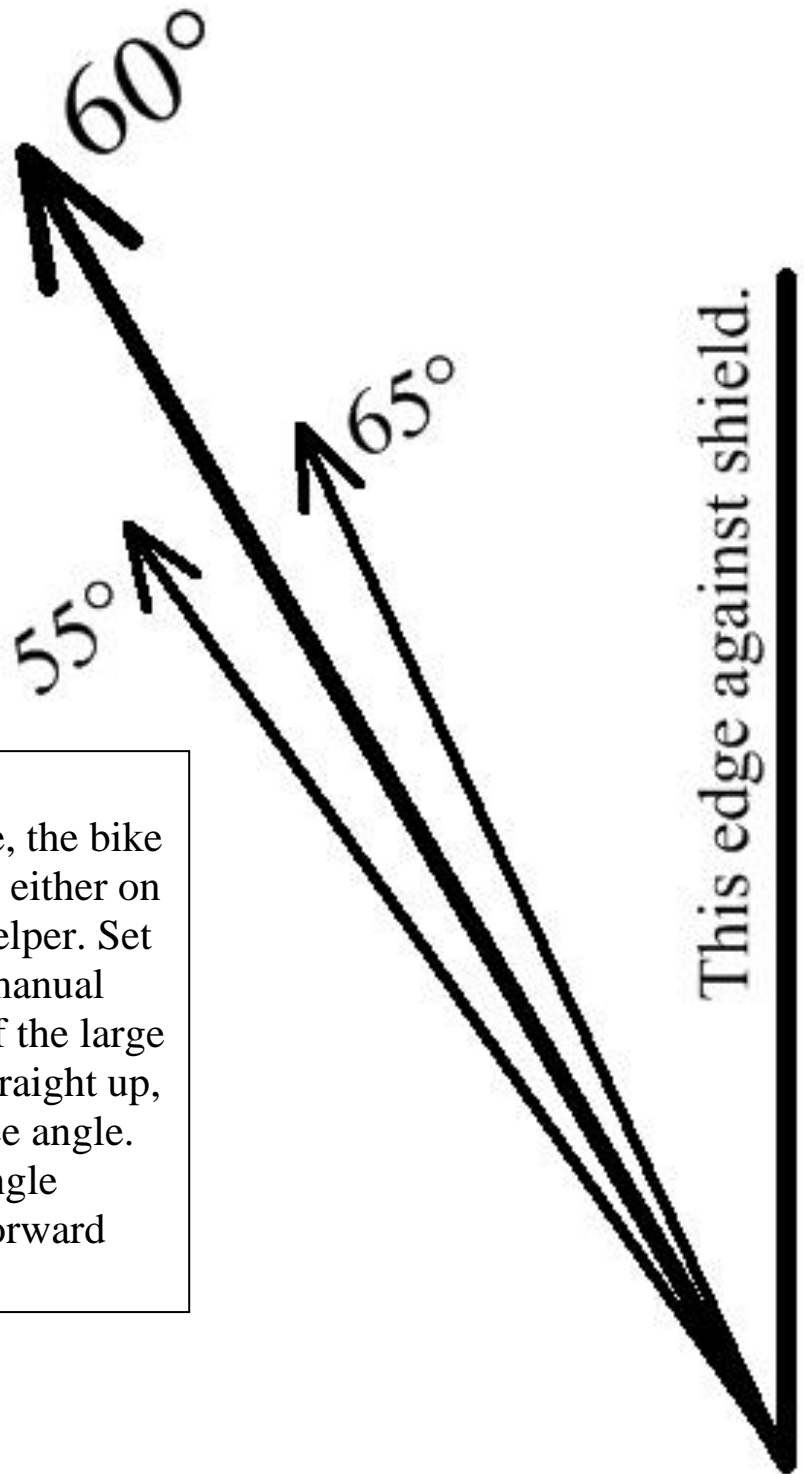
MadStad Engineering, Inc.

1451 E. Jefferson St.
Brooksville, FL 34601
352-848-3646

Web Site: <http://www.madstad.com>

Email: support@madstad.com

Thank you for your support, and ride safely!



ANGLE GUIDE

To check your windshield angle, the bike should be in an upright position either on a center stand or held up by a helper. Set the spine (folded edge) of this manual against the front of the shield. If the large arrow marked 60° is pointing straight up, then your shield is at a 60 degree angle. A little farther back and your angle would be closer to 55, farther forward closer to 65 degrees.