

MADSTAD

E N G I N E E R I N G

Adjustable Windshield System

BMW F750GS / F850GS

Please read this entire manual before proceeding with installation.

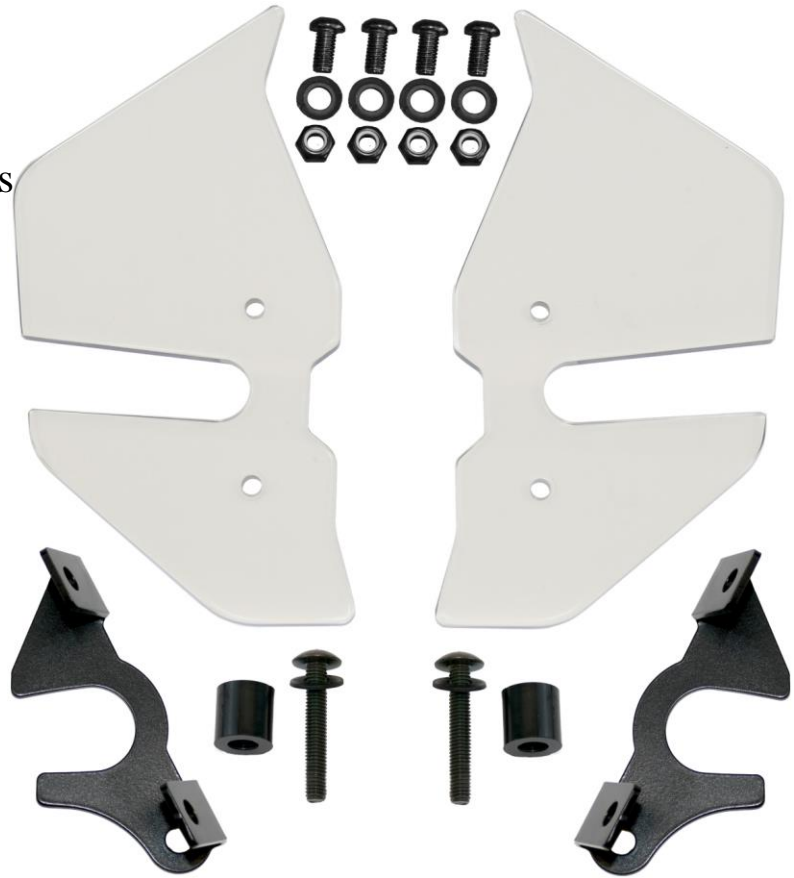
Adjustable Bracket System:

- (1) Set of adjustable brackets
- (1) Flat center plate
- (4) M6 x 12 mounting screws
- (4) M6 flat washers
- (4) M6 lock nuts
- (4) M5 x 20mm Phillips Screws
- (4) Plastic flat washers
- (4) Rubber washers



Side Deflectors Kit:

- (2) Side deflector brackets
- (2) Side deflectors
- (2) M5 x 30 truss screws
- (4) M6 x 16 button socket screws
- (4) M5 metal flat washers
- (4) Black plastic spacers

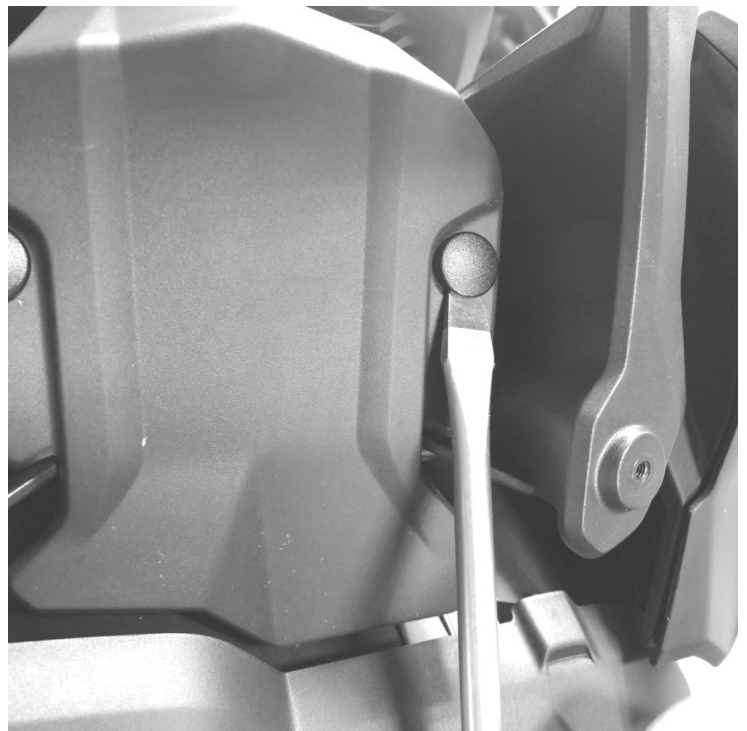


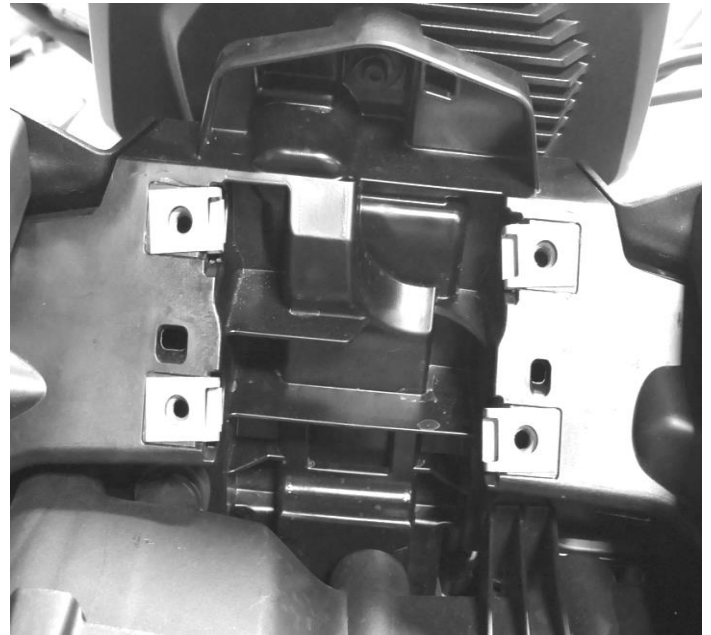
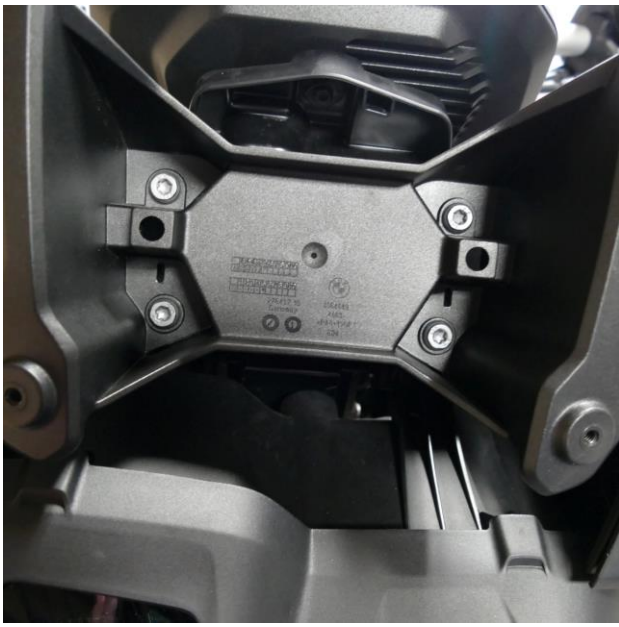
Tools Needed:

- Torx drivers T-15 and T-30
- Flat-head screwdriver
- Phillips screwdriver
- 4mm Allen wrench
- 10mm open-end wrench

Factory Shield Removal:

You will need to remove the factory windshield and the plastic bracket that holds it. After removing the windshield you will need to pry off the plastic push-rivets that hold a plastic cover plate on. Once the cover is off you then **remove the T-30 screws underneath.** Hold on to these screws, they will be used to attach the MadStad brackets.

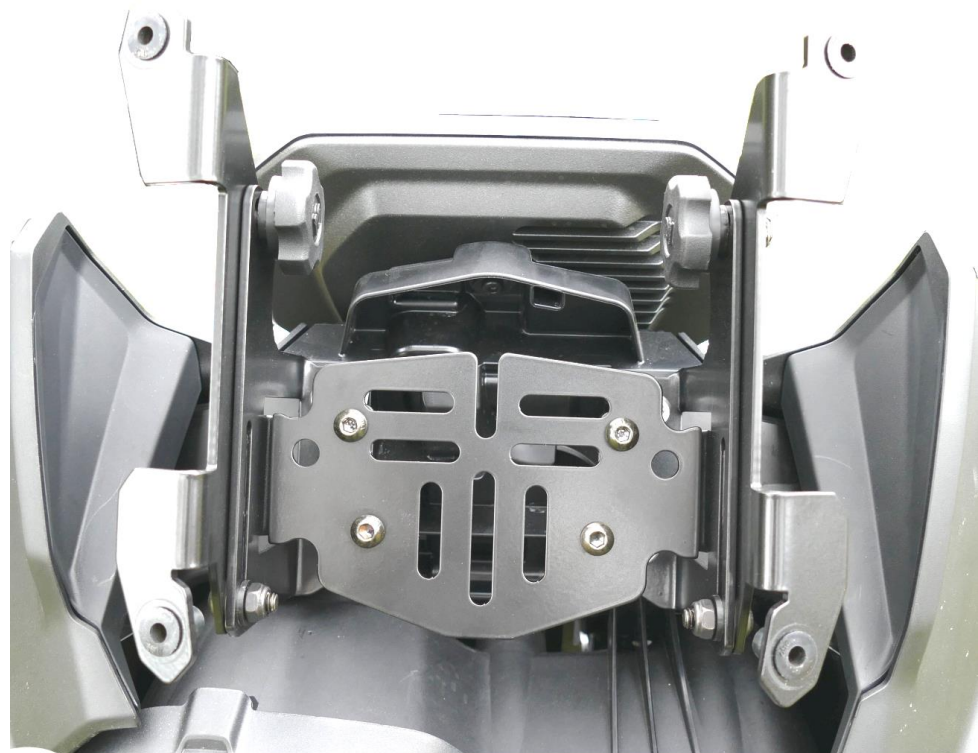




Bracket Installation:

Your MadStad brackets attach to the four metal clip nuts shown at right. **Use the factory screws, the bracket knobs should be facing inward.** Once the brackets are attached, install the center plate using the short M6 x 12 button screws through the front with a flat washer and lock nut on the back side. The completed assembly should look like the photo below.

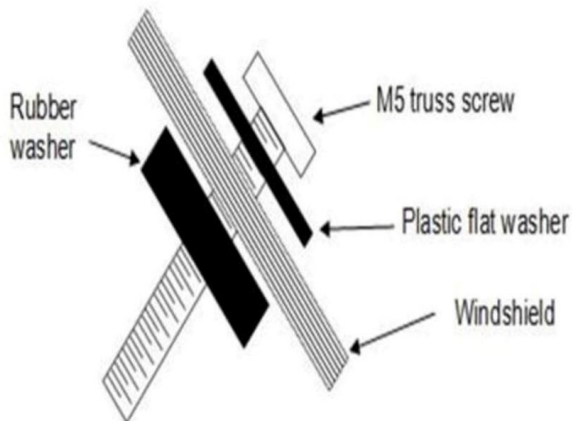
Once the brackets and center plate are installed you can either leave it like this, or snap the plastic cover plate over our center plate using the two push rivets you took out. The larger holes on each side of the center plate is where you will insert the rivets (make sure the center pin is pulled up first) then push in on the center pins to lock them in place.



Windshield Installation

1. Pre-install the Truss screws & washers into the windshield holes as shown in the image below.
2. Once all four of the screws are in place, gently guide the screws into the Well Nuts in the brackets until all four are set.
3. Hand tighten the Truss screws until they swell up behind the bracket and are firmly holding the windshield.

Windshield Layout:



Well Nut Tips:



Not Tightened



Over Tightened

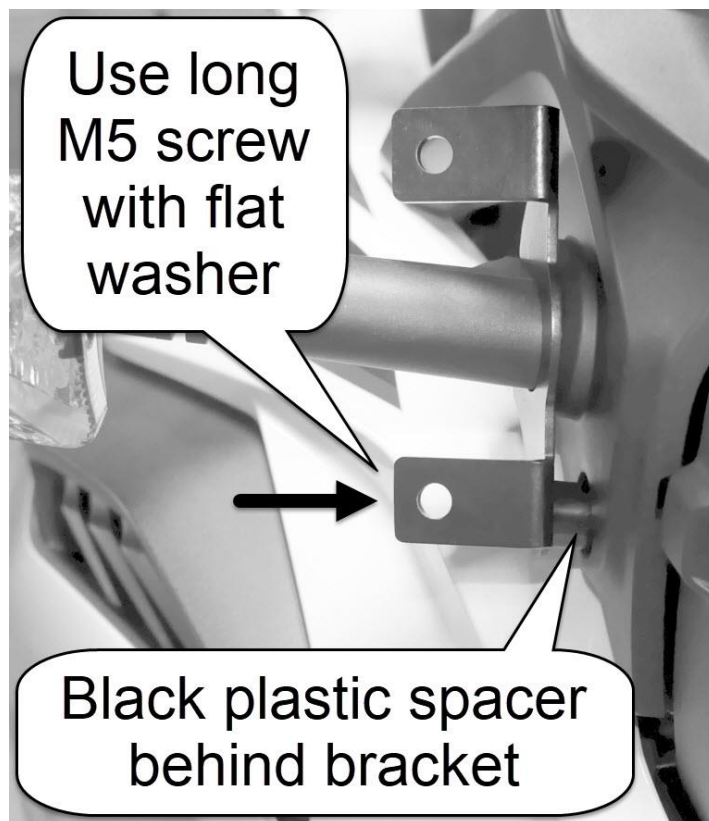
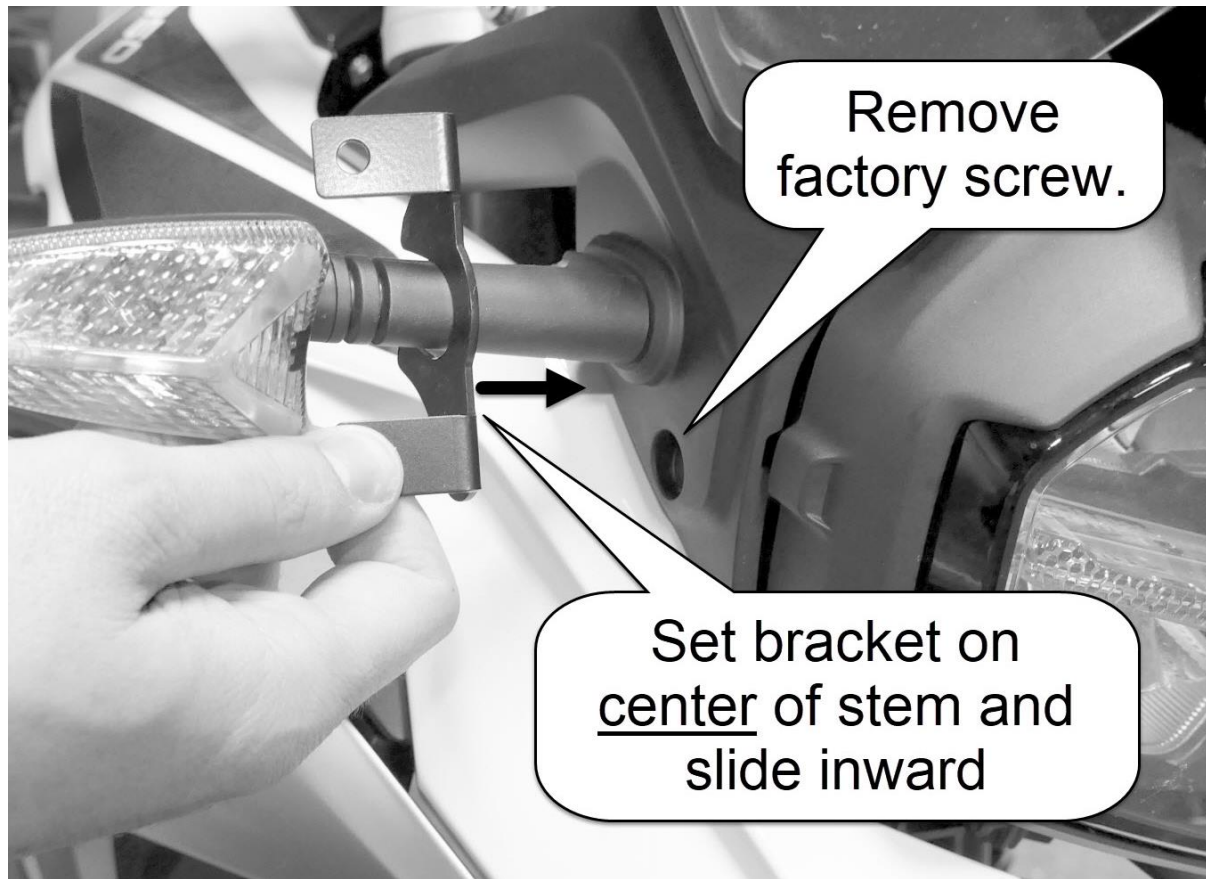


Correct

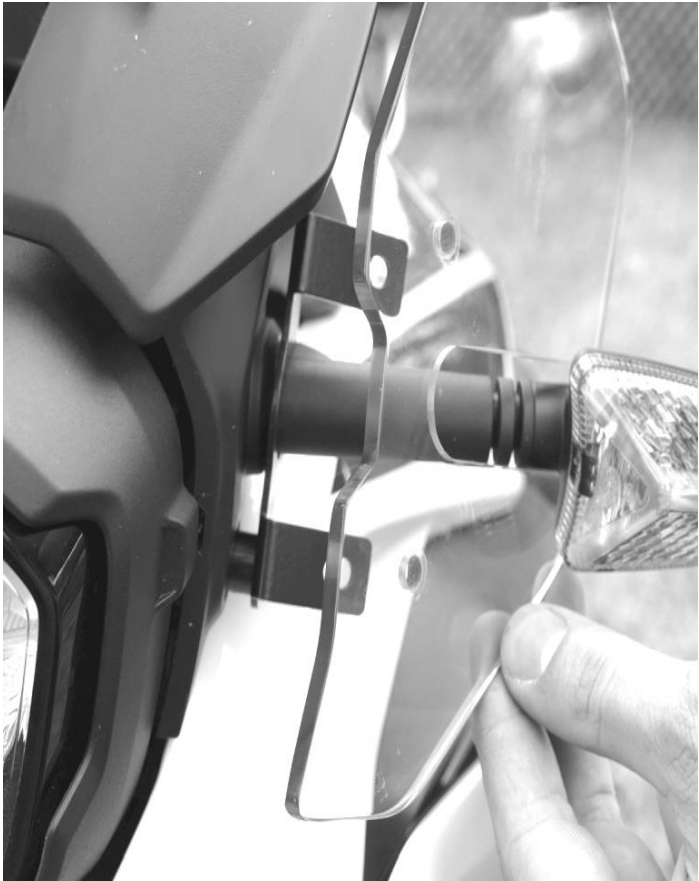
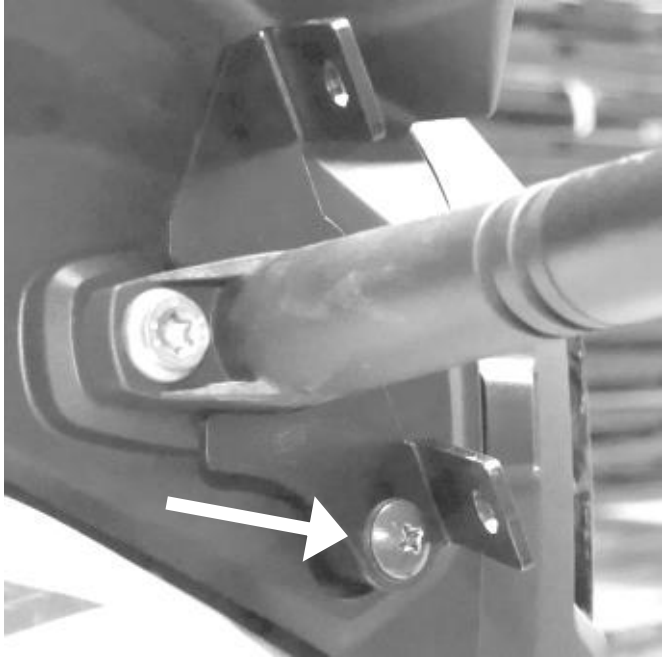
****HAND TIGHTEN****

Winglet (Side Deflector) Installation

Two side deflectors (winglets) attach at each turn signal. You will attach the brackets first as shown below, then the plastic deflectors.



The deflector slips over the front of the turn signal stem as shown at right, and fastens to the bracket with M6 x 16 mm button socket screws and flat washers through the front, and a lock nut on the back. You will need a 4mm Allen wrench and 10mm crescent or box wrench.



Adjusting the Windshield Brackets

The two black knobs release the brackets allowing the windshield to slide and tilt. These knobs must always be tightened securely before riding. **DO NOT** attempt to adjust the brackets while riding; you must come to a complete stop before making adjustments!

Loosen the knobs 1 turn to release the shield for height adjustments, 3-4 turns for angle adjustments. Set the windshield so the top edge is at about your chin level as you look straight ahead while seated on the bike. Set the angle at approximately 60 degrees. (Use the angle guide on the back page of this manual as a guide.) Tighten the knobs and go for a ride to see if you now have smooth airflow over and around your helmet. Do this on a calm day if at all possible; windy days make it hard to judge the airflow. To try a different windshield position, bring the motorcycle to a complete stop and out of traffic. Loosen the two knob screws and tilt the windshield forward or back 2-3 degrees or so, and/or adjust it up or down if necessary. Re-tighten the knobs and go for another ride until you find the setting that works best for you.

Disclaimer

Neither MadStad Engineering nor its owners shall be liable for any damages, consequential or inconsequential, resulting from the use of our products. Installation of any of our products constitutes acceptance of these terms.

It is the responsibility of the user to make sure all fasteners are tightened securely, the windshield is mounted properly and the adjustment knobs are tightened snugly before putting the motorcycle in motion. MadStad systems **ARE NOT** to be adjusted while the vehicle is in motion; you must pull over out of the way of traffic and come to a complete stop before making any changes. The user must never place the windshield in such a position as to interfere with the safe and complete movement of the handlebars and controls.

Returns and Warranty

MadStad adjustable brackets carry a lifetime warranty against manufacturing defects. This does not include cosmetic issues nor any parts that inherently wear out or degrade over time such as rubber and plastic parts. Windshields, deflectors, and other similar plastic parts are warranted for 1 year against manufacturing defects, not against cosmetic issues or issues related to normal wear and tear. Please visit our website for further details.

MadStad Engineering, Inc.

1451 E. Jefferson Street
Brooksville, Florida 34601 USA
352-848-3646

Web Site: <http://www.madstad.com>

Email: support@madstad.com

Thank you for your support, and ride safely!

