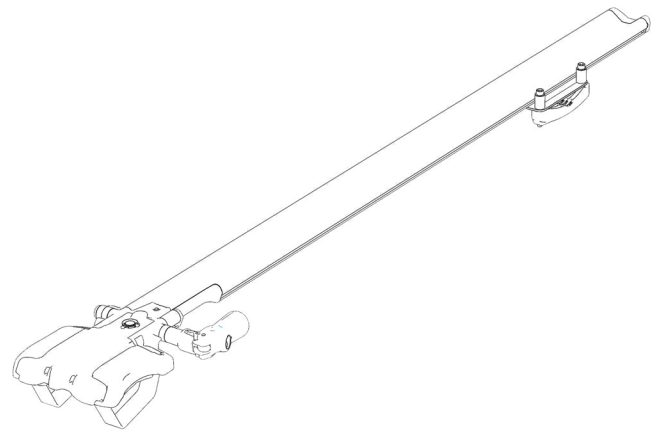




rockymounts  
**TieRod**



## Guidelines

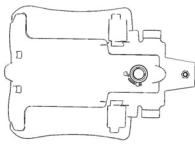
This carrier is intended for elliptical shaped factory crossbars  
Bicycles must be equipped with a quick release front wheel  
Minimum crossbar spread is 16 inches, maximum 40 inches  
Do not exceed the load capacity of your vehicle's roof rack, 2 bike maximum for factory bars  
Bicycle weight limit is 35lbs with this carrier  
Use of forks equipped with carbon fiber dropouts or forks without safety tabs will void the warranty

## Parts Included

A: Head Assembly  
B: Wheel Tray  
C: End Cap  
D: M5x12 Bolt

E: Locking Quick Release  
F: Wheel Strap Assembly  
G: Rear Bracket Assembly  
H: 6mm Hex Wrench

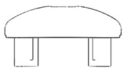
I: 5mm Hex Wrench  
J: 4mm Hex Wrench



A (1x)



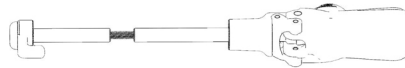
B (1x)



C (1x)



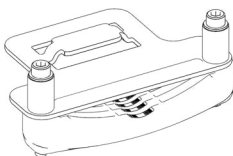
D (1x)



E (1x)

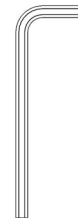


F (1x)



G (1x)

\*lock cores not included



H (1x)



I (1x)

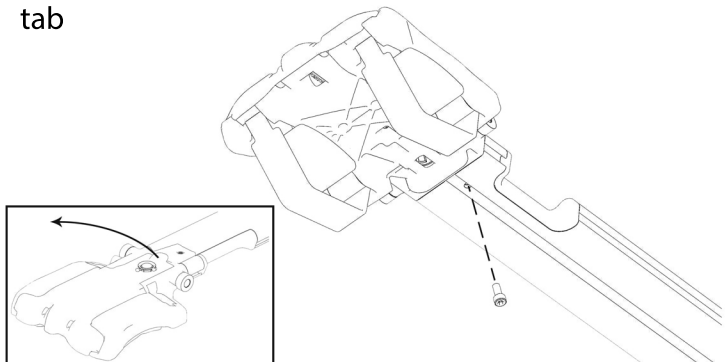


J (1x)

## Assembly Instructions

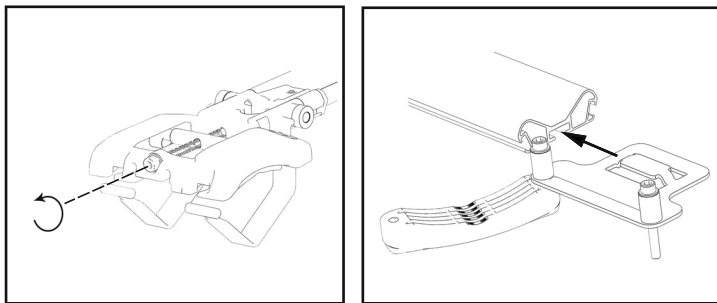
### 1 Install Head

Align holes on head and wheel tray, install M5x12 bolt. Remove top cap from head by lifting up finger tab



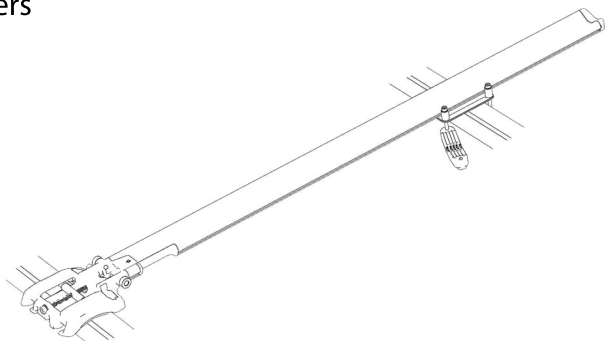
### 2 Loosen Straps & Bracket

Loosen M8 bolt and unhook straps. Loosen one M6 bolt on rear bracket and pivot bracket away. Slide rear bracket assembly into slot at end of wheel tray



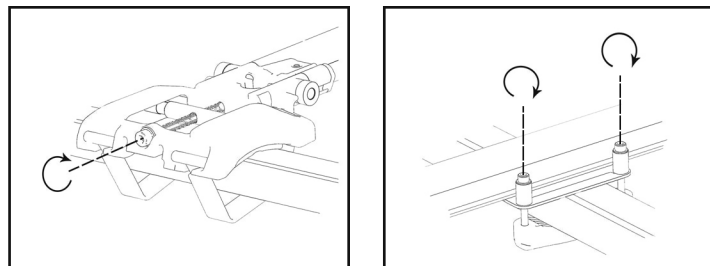
### 3 Position Rack

Place head onto front crossbar. Slide rear plate above rear crossbar. Rack must be positioned between towers



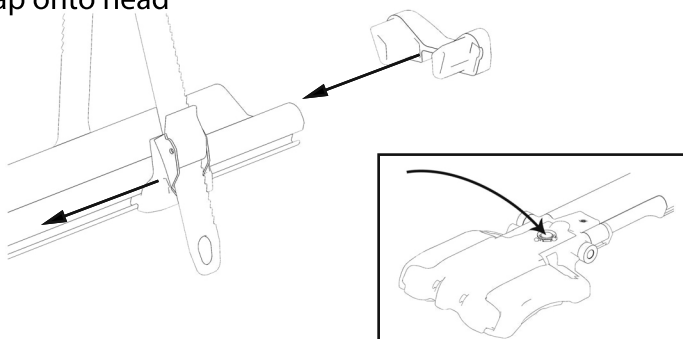
### 4 Install Rack

FIRST: Reattach strap around front crossbar, centering head over crossbar. NEXT: Pivot rear bracket to align with loosened bolt and tighten two M6 bolts. Tighten M8 bolt on head assembly



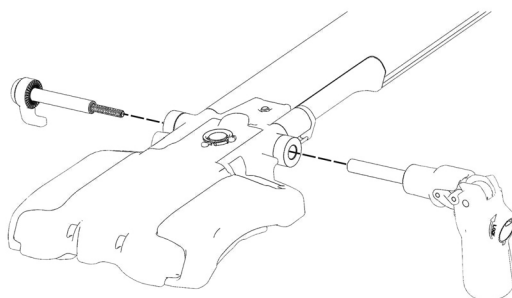
### 5 Wheel Strap & Caps

Install wheel strap into side slots with buckle facing out. Press end cap into rear of wheel tray. Reinstall top cap onto head



### 6 Quick Release

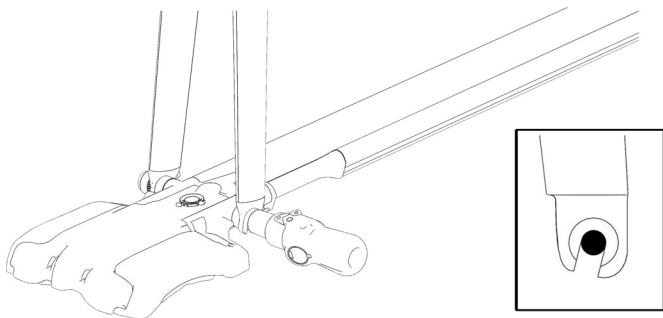
Unscrew locking QR and install into head assembly. Handle should face out for easier access. Tighten QR and flip handle 90 degrees into closed position



## Loading Bike

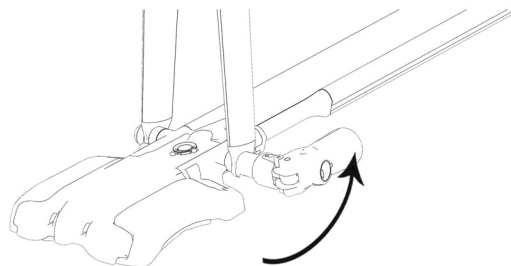
### 1 Load Bike

Open QR. Handle should be open (180°). Remove front wheel and place bike onto rack with fork dropouts securely seated on QR axle



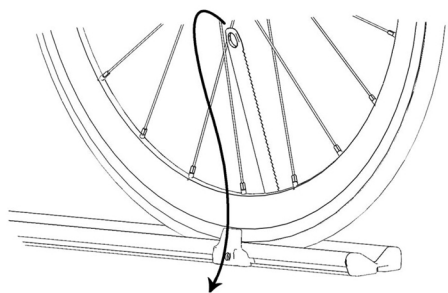
### 2 Tighten Quick Release

Tighten QR and secure bike by closing the QR handle 90°. QR should close firmly with enough tension to secure fork from moving. If too loose open handle, tighten then close again (re-adjust until secure, do not over tighten). If unsure, consult your local dealer or RockyMounts



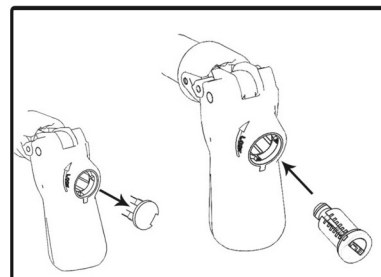
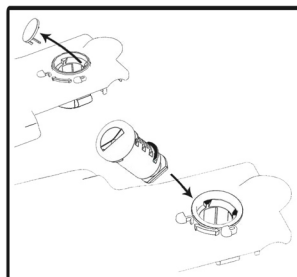
### 3 Secure Rear Wheel & Bike

Feed rear wheel strap through rear wheel into buckle and pull tight. Double check bike is secure by shaking bike back and forth. Fork and wheel should be properly seated and not move



### 4 Lock Cores (Not Included)

Remove plastic insert from QR handle and tab on top cap using key. Insert key into core and line up large protruding metal wafer between tabs in housing. Install lock cores



## Warnings

Remove Baby Seats, Panniers, U-Locks, or items that could detach from the bicycle.

Do not use bicycle covers, bicycle bras, or bikes equipped with rear disc wheel.

Not intended for off road use. Not intended for use on trailers or towed vehicles.

Locks are only deterrents to thieves, RockyMounts, Inc. cannot be held liable for stolen bicycles.

Remove rack before entering a car wash.

Check all fastenings (nuts, bolts, straps, and skewer) before each use. Once a year, remove rack from car. Clean and inspect for damage.

Do not mount vertically

Lubricate QR every 1-2 months using chain lube or oil. Dust/dirt can build up over time in QR. If QR begins to stick, lubricate immediately.

Failure to properly load fork into QR could result in the bicycle detaching with subsequent damage to the bicycle, vehicle, or other motorist.

## Lifetime Warranty

Thank you for purchasing a RockyMounts product. We take pride in providing a great customer experience and manufacturing products that enable our customers to get their gear to their next colorful adventure.

As of January 1, 2014, RockyMounts products are covered for life to the original purchaser when used in accordance with the instruction manuals' assembly, installation and use guidelines.

If you feel something broke before it's time; please email us at [ride@rockymounts.com](mailto:ride@rockymounts.com) or call us at 800.873.1871. For the most efficient service, email a digital photo (we need this photo to verify the problem) of the product in questions, a brief description of the situation, and your purchase receipt. Our techs will respond within one business day. Most of the time we'll replace the part in question, but we may ask for more details.

RockyMounts, Inc. warranty only covers RockyMounts, Inc. products. It does not cover theft, or damage to vehicles and/or equipment.

All products purchased prior to Jan 1, 2014 are covered by a one-year warranty; see your product manual for details.