

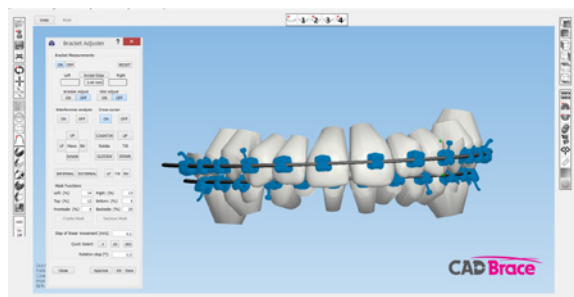
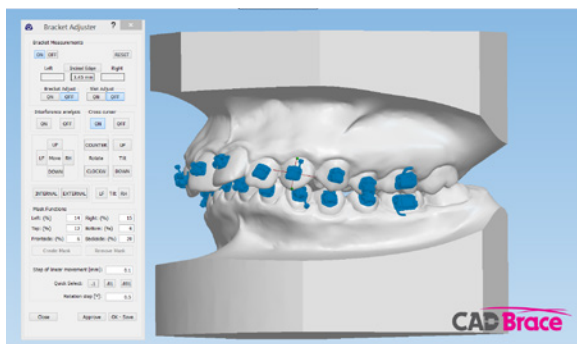
# DIGITAL orthodontics...

## STEP 1. Upload your intraoral scan



**7 Day DELIVERY GUARANTEE**

## STEP 2. Check the set-up and adjust



### BRACKETS INCLUDED

For a limited time, CAD Brace can include brackets from Dentaureum Germany at no extra cost from the equilibrium 2 or discovery sl ranges or you can opt to use your own.



## STEP 3.

Receive your computer designed, digitally manufactured CAD Brace matrix tray ready for indirect bonding in only 7 days!

- CAD Brace is a revolutionary method for the precise placement of brackets within a 1 micron tolerance. The accuracy, ease and speed of CAD Brace is superior to traditional bonding techniques. Chair time is reduced, treatment time is accelerated, and re-bonding issues become non-existent. 3D printing technologies help deliver an unprecedentedly accurate transfer tray system to hold the brackets in the exact position needed for the most accurate bond possible. Try a case today!
- We can setup any bracket brand you like with CAD Brace so you are free to use your favourite brackets\*
- Software is supplied to check the setup and customised treatment simulation. When bracket placement is performed by us digitally you can easily see the completed setup. You can also fine tune the bracket placement to your liking and see the simulated result of the bracket placement. You then send the case back to us digitally for transfer (matrix) tray manufacture
- Intraoral scan compatible. Impressions also accepted
- The 2 part matrix custom delivery tray is easily used with light cure or chemical cure adhesives.

\* Conditions apply.