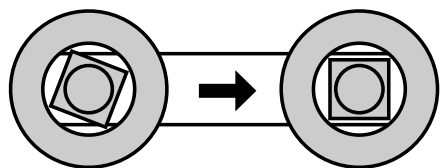


Maintenance and Care

Resetting Carriage Bolts into Channel



If the sliding rear frame cradle is loosened too far or removed, be sure that the square carriage bolt heads are aligned to the slot.

Tightening Upmount Tubes

The lower sections of the tubes may come loose with heavy use. Simply align the tubes so the slot faces the rear of the TrikeTable and tighten under the base.

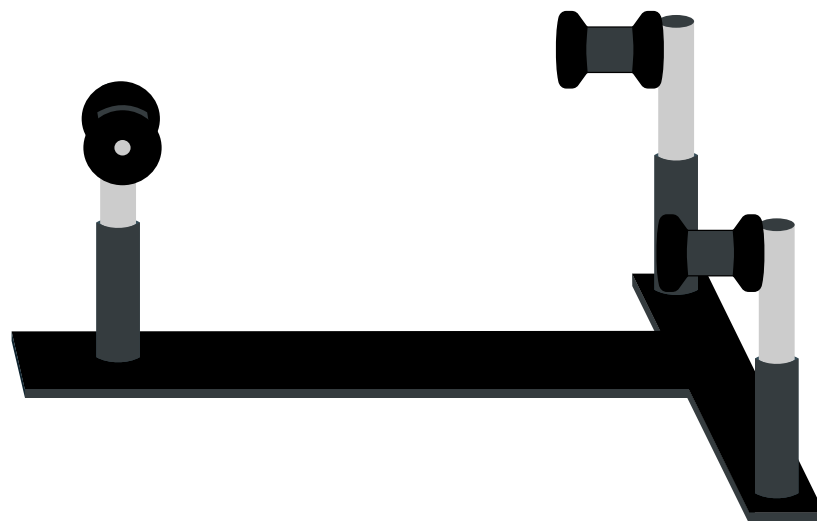
Cleaning & Care

Servicing and repairing recumbent trikes can be messy so don't worry about getting the TrikeTable dirty. The TrikeTable uses a durable finish and stainless fasteners to resist corrosion. Occasionally, remove any debris or oils from the stand using a dish soap and warm water.

Warranty/Disclaimer

The TrikeTable is covered by a lifetime warranty against defects in material or workmanship. TrikeTables or their components that become worn through normal use or damaged by accident, abuse or modification will not be covered under warranty. This warranty does not cover consequential damage or cost of injury incurred by the user.

Servicing and repairing recumbent trikes can sometimes be dangerous. Carriage House CycleWorks, LLC. is not responsible for any injuries and/or damage caused by or during the use of a TrikeTable.



TrikeTable

by Carriage House CycleWorks, LLC

Assembly & User Guide

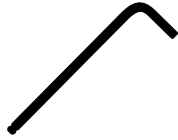
www.triketable.com
chcycleworks@gmail.com

Assembling your TrikeTable

Tools Required



4mm Hex Key



5mm Hex Key

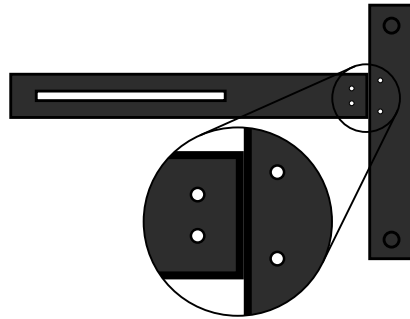


10mm Wrench

Step 1

Layout the TrikeTable Sections

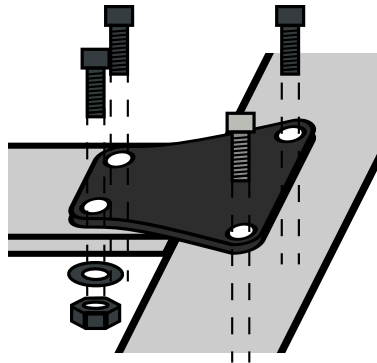
Match up the 2 base pieces so the holes align as shown.



Step 2

Attach Joining Plate

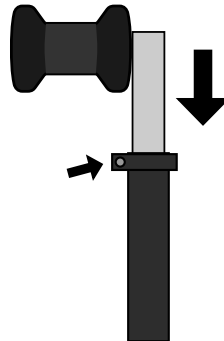
Use the joining plate and the 4 included fastener assemblies to join the base sections with a 5mm hex key and 10mm wrench.



Step 3

Install Frame Cradle Posts

Slide each of the 3 frame cradle posts in the lower posts and tighten the tube clamp with a 4mm hex key.



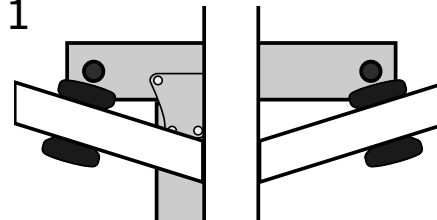
Using your TrikeTable

Placement

The TrikeTable is designed to be placed on a flat surface that supports the entire base of the stand.

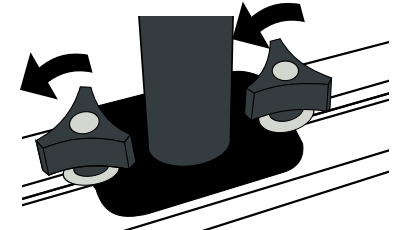
Securing your trike

1



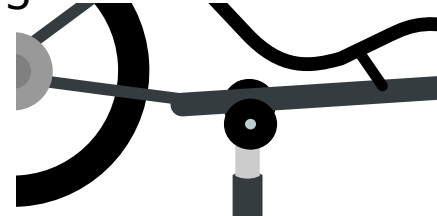
Rotate front cradles to fit angle of frame and set trike in the cradles.

2



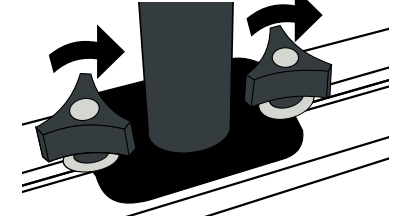
Loosen the two rear adjusting knobs a turn or two.

3



Raise the rear of the trike. Adjust the sliding frame cradle to an open spot on the trike frame.

4



Rest the trike in the rear frame cradle and tighten the two rear adjusting knobs.

If necessary, use the included bungee to secure the main frame of the trike to the stand.

Height Adjustment

If the TrikeTable is placed on a large surface, like a large table, the frame cradles are height adjustable. Loosen the tube clamps and raise the cradles as needed but always keep about 2" inserted in the lower tube.

