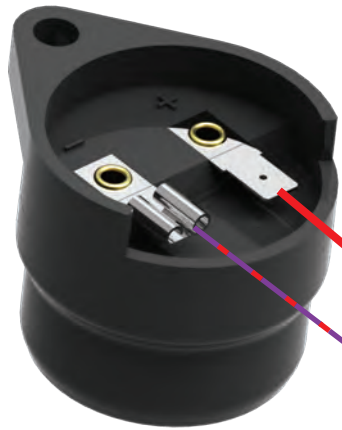


A B C D E F

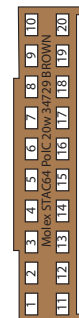
1



Battery Positive (after fuse)

Connect to the same location as the RED wire that connects to position 20 of connector C (BROWN)

2



Insert into Existing Brown (C) GaugePilot connector

Battery Negative

Connect to the same location as the BLACK wire that connects to position 10 of connector C (BROWN)

3

GP-A16 is a 6-14V buzzer with standard 6.3mm blade terminals.

Crimp terminals, Warning 2 and Warning Negative wires are included with the buzzer.

IP34 rated

Consumes 30mA at 12V

4

The Buzzer can also be connected to Warning 1 (to do so, use position 8 instead of position 9).

The Warning Negative wire is shared with Warning 1 and may already be fitted (ensure it is connected to Battery Negative).

GP-A16 Buzzer



Sheet 1 of 1

15th September 2016 Revision: R1



(c) 2016 Hambly Industries Limited