

# Trash Guard Instruction Manual

Here are some guidelines to help you correctly set up your Trash Guard for optimized performance.

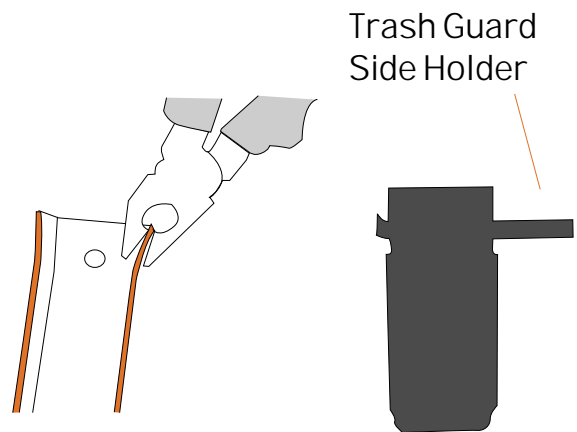
# Parts Included

## Trash Guard Includes:

1x Trash Guard                      2x M10 Nyloc Nut  
1x Back Plate Holder            2x M10 Washer  
1x U-Bolt

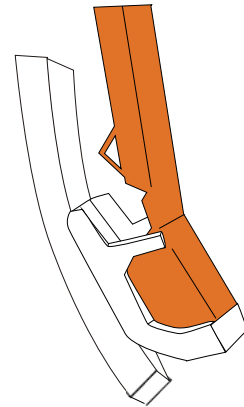
### Step 1:

Pull out the top corners and one side holder of the trash guard using pliers



### Step 2:

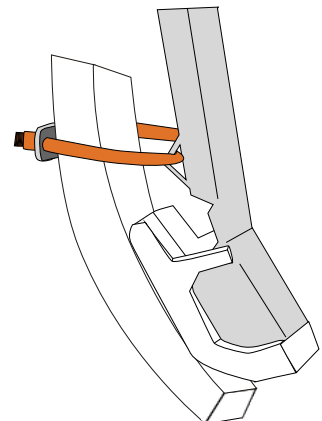
Slide the Trash Guard onto the adaptor and push the side holder back into position using a hammer to create a snug fit.



### Step 3:

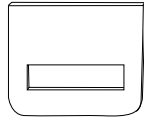
Fit the U-Bolt and holder plate and tighten.

\*Point/ Lynch pin can be inserted with trash guard fitted



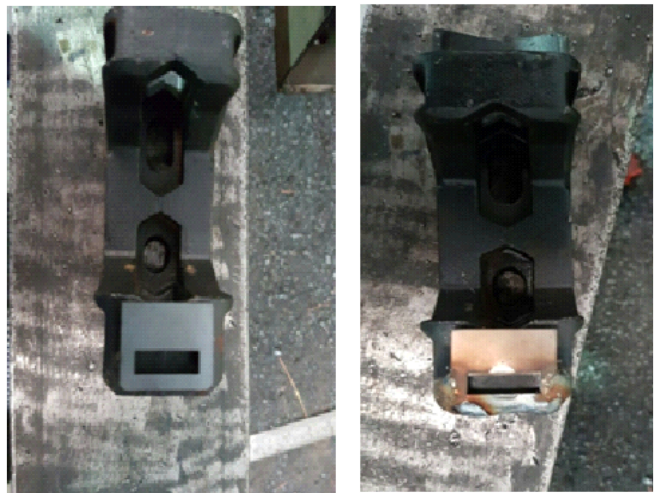


## Upgrade



There has recently been an update to the trash guard design.

There needs to be a 'holder' welded to the front of the Slot Mate adaptor to hold the bottom tip of the trash guard in place.



## Step 5 :

This also allows the trash guard to be tightened properly, and will give the guard rigid strength necessary to prevent bending, breaking and slipping out of position.



If you have any questions about installing your Trash Guard, please do not hesitate to give us a call on 08 9354 1111

## Reorder Part No.

Part	Part No.
Trash Guard	PT-2002
Back Plate Holder	PT-2003
U-Bolt	FA-0708
M10 Nyloc Nut	FA-0471
M10 Washer	FA-0526
Weld on Upgrade Kit	PT-2003

\*For all other parts please see our website or price guide

[www.maxipoint.com.au](http://www.maxipoint.com.au)



Tel: 08 9354 1111

[sales@maxipoint.com.au](mailto:sales@maxipoint.com.au)

HEAD OFFICE: 69-71 Catalano Circuit, Canning Vale 6155, WA