

Trash Guard Instruction Manual



Parts Included

Trash Guard Includes:

1 x Trash Guard

1 x Back Plate Holder

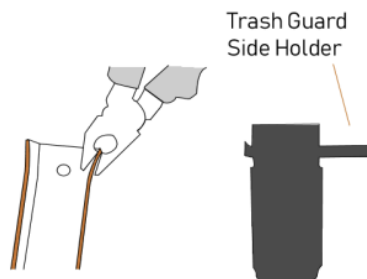
1 x U-Bolt

2 x M10 Nyloc Nut

2 x M10 Washer

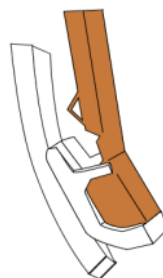
Step 1:

Pull out the top corners and one side holder of the trash guard using pliers.



Step 2:

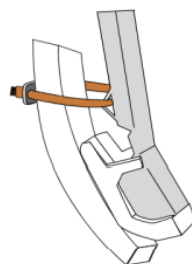
Slide the trash guard onto the adaptor and push the side holder back into position using a hammer to create a snug fit.



Step 3:

Fit the U-bolt and holder plate and tighten.

*Point/lynch pin can be inserted with trash guard fitted

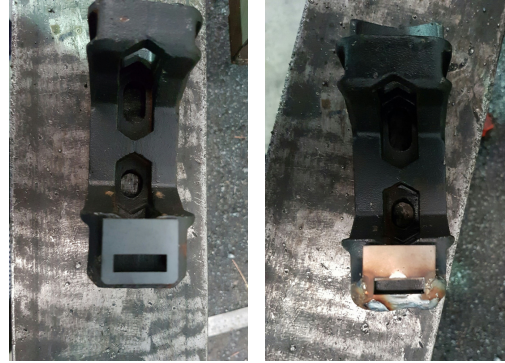


Upgrade:



There has recently been an update to the trash guard design

There needs to be a 'holder' welded to the front of the Slot Mate adaptor to hold the bottom tip of the trash guard in place.



Step 5:

This also allows the trash guard to be tightened properly, and will give the guard rigid strength necessary to prevent bending, breaking and slipping out of position.



If you have any questions about installing your Trash Guard please do not hesitate to give us a call on **08 9354 1111**

Reorder Part No.

Trash Guard	PT-2002
Back Plate Holder	PT-2003
U-Bolt	FA-0708
M10 Nyloc Nut	FA-0471
M10 Washer	FA-0526
Weld on Upgrade Kit	PT-2003

We love seeing our products ready for action!

Text a photo to **0499 225 219**
along with your name and
postage address and we will
send you a FREE Maxipoint hot
sauce!

