

2024

PRODUCT & PRICE GUIDE

ALL CULTIVATOR BARS

BOURGAULT PARALINK PLX/PLS/PLDS

MORRIS C1/C2/QUANTUM

JD 1870 / CONSERVA PAK

HORSCH SPRINTER

SEED MASTER

SEED HAWK

SIMPLICITY

AUSPLOW



Optimise Your Seeding Program

WITH OUR LARGE RANGE OF HIGH QUALITY AFTER-MARKET SEEDING PARTS

Maxipoint Custom Points	03
Slot Mate System	04
Slot Mate System	05
Bolt On/Wedges	06
Ezi Fit System / Single Bolt On / Seed Drills	07
Seed Boot - Cultivators	08
Seed Boot - Cultivators	09
Point & Boot Kit	10
Point & Boot Kit	11
Inline Series	12
Bourgault Paralink / PLDS	13
Morris	14
Ausplow	15
Conserva Pak (JD 1870) / Horsch Sprinter	16
Seed Hawk / Simplicity / Seed Master	17
Single Press Wheel System	18
Coulter System	19
Airguard - Blockage Prevention System	20
Airguard - Seed Brakes	21
Blockage Monitors	22
Fasteners / Parts / Accessories	23

Our Mission

To help you optimise your seeding program.

Our Product Design Objectives

- Accurate seed and fertiliser placement.
 - Optimum crop establishment.
 - Increased value for money.
 - Ease of use.
 - Durability.

Need a Custom Point to get the job done?
We can help with the following capabilities.



Tungsten Tiles



Tungsten Grit



Brazing Alloy



Hardfacing



Laser Cut Plate



Laser Cutting



Robot Welder



Showroom



AutoCAD

Send us your ideas,
photos, drawings
and we'll get to work.

CONTACT US

Email: sales@maxipoint.com.au

Call: 08 9354 1111

We Deliver Australia Wide!

1 ADAPTOR FITS 20+ POINTS

Point Upgrades

Hardfacing



PT-UPH

\$23

Adds life by improving side and back wear, particularly in abrasive soils or wet seeding.

Liquid Tube Holder – Nut



PT-UPN

\$4

Simple nut welded to hold 6mm liquid tube. Other sizes available on

Side Plates



PT-UPS

\$28

For double shoot set ups, deflects soil away from the fertiliser drop zone.

Add-Ons

Trash Guard



PT-2002

\$33

Lynch Pin



FA-0802

\$2

HD Lynch Pin

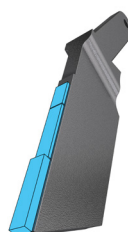


FA-0803

\$3

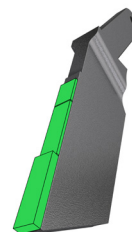
Tungsten Options

12mm



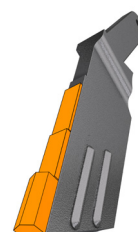
The common 12mm wide point for lowest soil throw and easiest pulling.

15mm



15mm wide tungsten for extra wear life.

SLL



The Super Long Life with extra thick 'spear angled' tungsten and hardfacing on the side.

Slot Mate System



Points

<p>Slot Mate Vertical 12mm</p>  <p>Depth: 7" Angle: 70° PT-1SMV \$77</p>	<p>Slot Mate Vertical 15mm</p>  <p>Depth: 7" Angle: 70° PT-1SMV5 \$81</p>	<p>Slot Mate Vertical SLL</p>  <p>Depth: 7" Angle: 70° PT-1SMV8 \$103</p>	<p>Slot Mate V Short 12mm</p>  <p>Depth: 5" Angle: 70° PT-1SMVC \$76</p>	<p>Slot Mate V Short 15mm</p>  <p>Depth: 5" Angle: 70° PT-1SMV5C \$81</p>
<p>Slot Mate Straight 12mm</p>  <p>Depth: 7" Angle: 60° PT-1SMS \$77</p>	<p>Slot Mate Straight 15mm</p>  <p>Depth: 7" Angle: 60° PT-1SMS5 \$81</p>	<p>Slot Mate Straight SLL</p>  <p>Depth: 7" Angle: 60° PT-1SMS8 \$103</p>	<p>Slot Mate Dyna</p>  <p>Depth: 6" Angle: 65° PT-1SMD \$76</p>	<p>Slot Mate Flexi</p>  <p>Depth: 6" Wing: 60mm PT-1SMF12 \$104</p>
<p>Slot Mate Razor 15mm</p>  <p>PT-1085 \$93</p>	<p>Slot Mate Razor SLL</p>  <p>PT-1086 \$115</p>	<p>Slot Mate E Adaptor</p>  <p>PT-SMEA \$27</p>	<p>Slot Mate Adaptor 7/16"</p>  <p>PT-1SMA7/16 \$16</p>	<p>Slot Mate Adaptor 1/2"</p>  <p>PT-1SMA1/2 \$16</p>
<p>Slot Mate Sweep 4"</p>  <p>PT-2020 \$71</p>	<p>Slot Mate Sweep 6"</p>  <p>PT-2021 \$73</p>	<p>Slot Mate Sweep 8"</p>  <p>PT-2022 \$78</p>	<p>Slot Mate Sweep 10"</p>  <p>PT-2023 \$78</p>	<p>Slot Mate Sweep 12"</p>  <p>PT-2024 \$81</p>

KNIFE POINT SYSTEM FOR CULTIVATORS INCLUDING:

- All C-shank machines
- Gason
- Horwood
- Simplicity
- Ezee-On
- John Shearer
- Flexicoil edge-on
- And more....



Points

Dyna Blade Curved	Dyna Blade Flat	Ezi Blade Vertical	Ezi Blade Vertical Short	Ezi Blade Straight
				
Depth: 6" Angle: 65°	Depth: 6" Angle: 65°	Depth: 6" Angle: 65°	Depth: 4" Angle: 65°	Depth: 6" Angle: 55°
PT-112A \$87	PT-112B \$87	PT-113V \$82	PT-113VC \$82	PT-113S \$82
Ezi Blade Straight Short	2 Bolt Curved Adaptor	Wedge Adaptor		
				
Depth: 4" Angle: 55°				
PT-113SC \$82	PT-1E48 \$44	PT-1EWA \$37		

Wedges

Wedge 1/2 x 45	Wedge 7/16 x 45	Wedge 1/2 x 57
		
PT-1MW1 \$25	PT-1MW2 \$25	PT-1MW3 \$25

Ezi Fit System

Ezi Ripper



Depth: 4"

PT-10ER \$72

Ezi Seeder



Depth: 4" Wing: 60mm

PT-10ES \$88

Deep Ripper



Depth: 5"

PT-10DR \$80

Deep Seeder



Depth: 5" Wing: 60mm

PT-10DS \$89

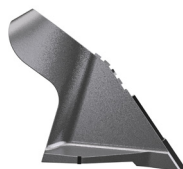
Roll Pin



PT-10EP \$2

Single Bolt On

Maxi Seeder



Bolt: 7/16" Wing: 45mm

PT-1001 \$78

Maxi Knife



Bolt: 7/16"

PT-1002 \$69

Maxi Plus



Bolt: 7/16" Wing: 60mm

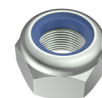
PT-1004 \$88

7/16 x 2 1/4



FA-0315 \$1.60

7/16" Nyloc Nut



FA-0409 \$0.60

1 Bolt Ripper



Bolt: 7/16"

PT-1007 \$72

Scari Ripper



Bolt: 1/2"

PT-1009 \$78

Scari Ripper Winged



Bolt: 1/2" Wing: 60mm

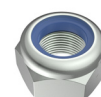
PT-1011 \$92

1/2 x 2 1/4



FA-0321 \$1.60

1/2" Nyloc Nut



FA-0410 \$0.60

Seed Drill

Pasture Point



PT-1014 \$72

Pasture Point Duncan

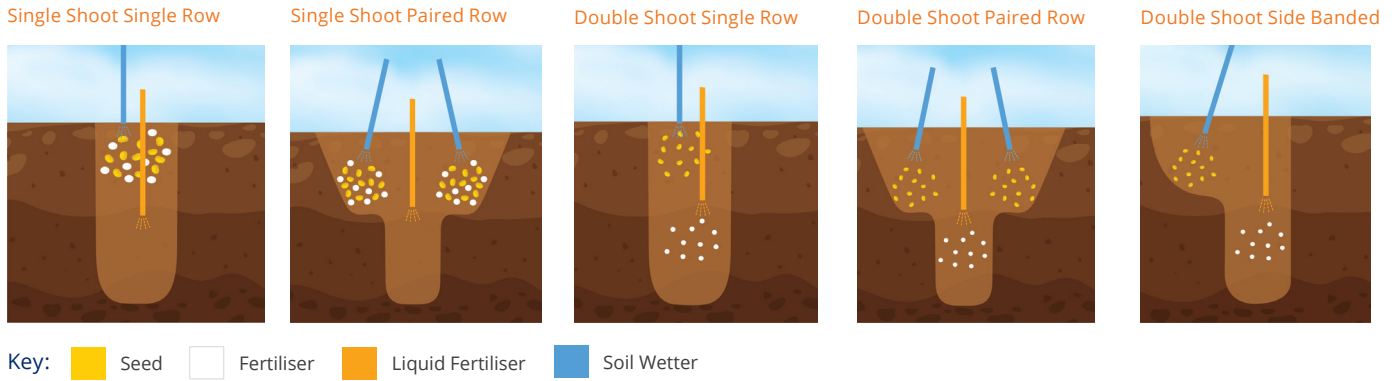


PT-1015 \$72





Seed Boot – Cultivators

SEED YOUR WAY WITH MAXIPOINT'S INTERCHANGABLE SYSTEMS

- Accurate Input Control
- Durable Designs For The Toughest Conditions
- Deep Band Your Granular Fertiliser With The Maxipoint Double Shoot System



Single Row

20mm Narrow	30mm Single Row	50mm Single Row	Side Banded
			
For heavy soil types.	For heavy soil types.	Most common in Australian conditions.	Seed placement on shoulder of furrow.
BS-1229 \$113	BS-1230 \$108	BS-1240 \$108	BS-1255 \$123

Double Row

40mm Paired Row	70mm Paired Row	Flexi Backshoot	Single Shoot Tyne Frame	Double Shoot Tyne Frame
				
Will give a wider seeding row.	Will give 2 distinct seeding rows.	For low breakout bars, or as conditions dictate.		
BS-1260 \$127	BS-1262 \$127	BS-1280 \$141	SB-0231 \$75	DB-0220 \$81

Upgrades

Closer Plate 50mm	Closer Plate 30mm	Flexi Closer	Liquid Upgrade	Line Locker	Rubber Union
					
BS-0245 \$37	BS-0239 \$42	FB-0255 \$54	Nut & S/S Tube PT-UPL \$9	FA-0809 \$7	FA-0810 \$8.50

Seed Boot – Cultivators

Single Shoot

50mm Single Row Boot Kit



SB-1230 \$143

20mm Single Row Boot Kit



SB-1237 \$148

30mm Single Row Boot Kit



SB-1231 \$143

40mm Paired Row Boot Kit



SB-1232 \$169

70mm Paired Row Boot Kit



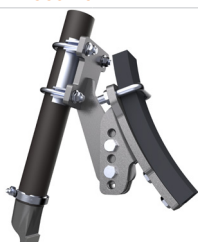
SB-1233 \$169

Side Banded Boot Kit



SB-1236 \$169

Flexi Boot Kit



SB-1234 \$184

Please note the tyne frame part numbers SB-0231 and DB-0220 are for Tyne Frames to suit C-Shank cultivator tynes.

If you have an edge on tyne, or any tyne other than a C-Shank, you must indicate your shank type on your order.

We make tyne frames to suit the following tynes: Horwood Curved, Horwood Straight, Gason, Simplicity, Flexicoil Edge-On, John Shearer and more.

These tyne frames are also supplied with a special U-bolt to suit. If unsure we welcome you to call or email us to clarify any details.

Double Shoot - Deep Banding Fertiliser

50mm Single Row Boot Kit



DB-1220 \$173

20mm Single Row Boot Kit



DB-1237 \$178

30mm Single Row Boot Kit



DB-1221 \$173

40mm Paired Row Boot Kit



DB-1222 \$199

70mm Paired Row Boot Kit



DB-1223 \$199

Side Banded Boot Kit



DB-1236 \$199

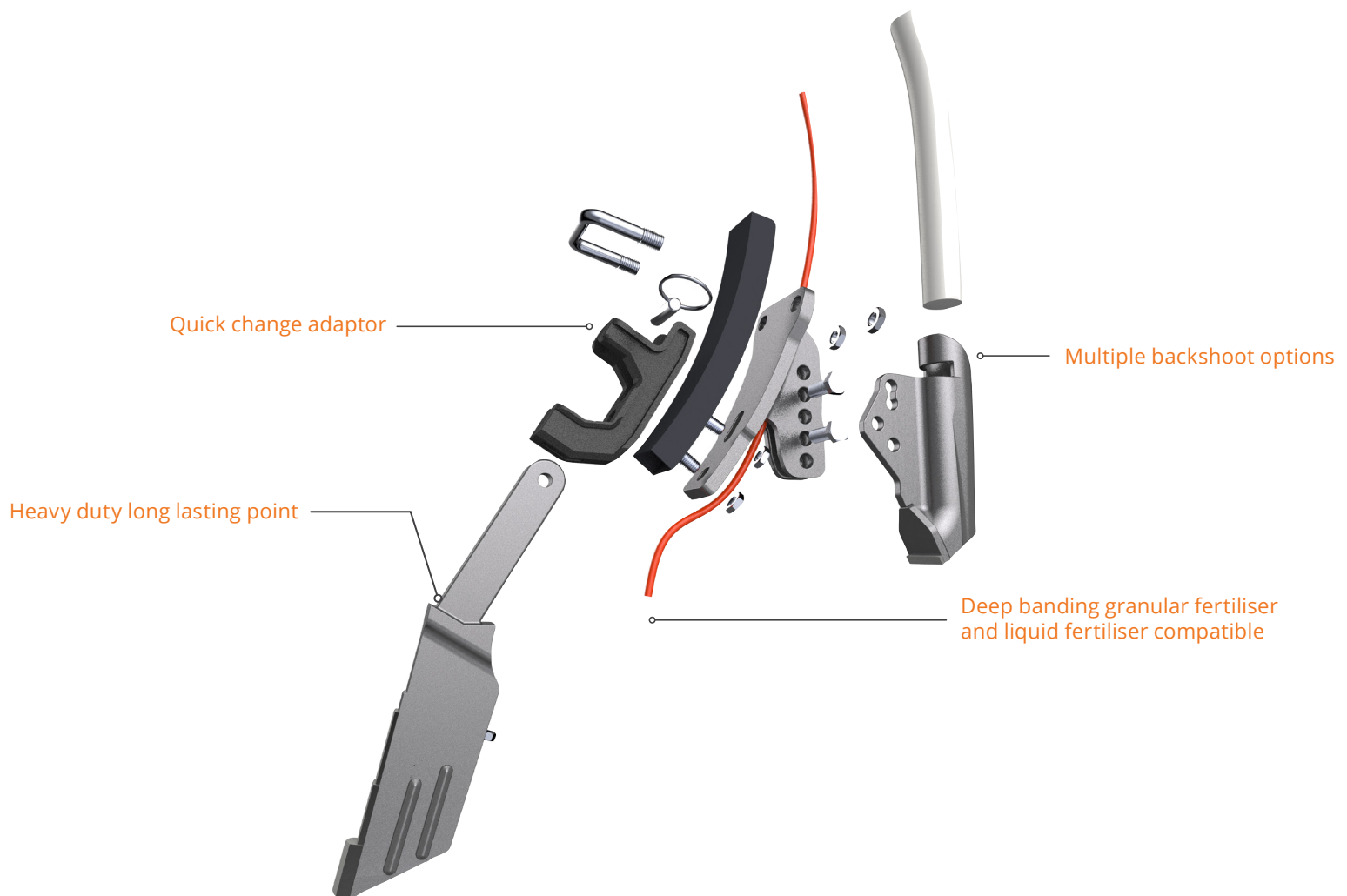
Flexi Boot Kit



DB-1224 \$216

VERSATILE | DURABLE | SIMPLE

- Over 20 Points & 7 Backshoots To Choose From
- Accurate Seed Placement For The Toughest Conditions



Point Boot Kit

POINT BOOT KIT CHECKLIST

TYNE FRAME

- Single Shoot
- Double Shoot

SEED HOSE OD

- 32mm OD
- 38mm OD

BACKSHOOT

Single Row

- 50mm Single Row
- 30mm Single Row
- 20mm Single Row
- Side Banded

Paired Row

- 40mm Paired Row
- 70mm Paired Row

Flexi

- Flexi Backshoot

POINT

- Slot Mate Vertical 12mm
- Slot Mate Vertical 15mm
- Slot Mate Vertical SLL (+\$26)
- Slot Mate V Short 12mm
- Slot Mate V Short 15mm
- Slot Mate Straight 12mm
- Slot Mate Straight 15mm
- Slot Mate Straight SLL (+\$26)
- Slot Mate Dyna
- Slot Mate Flexi (+\$18)
- Slot Mate Razor 15mm (+\$12)
- Slot Mate Razor SLL(+\$34)
- Other: _____

SHANK TYPE

- C Shank 1/2"
- C Shank 7/16"
- Horwood Curved
- Horwood Straight
- Gason
- Simplicity
- Flexicoil Edge On
- Other: _____

Please fill out the checklist to determine pricing for your point and boot seeding kit. Take a picture and email it to our team at sales@maxipoint.com.au for a quick ordering process.

Seeding Kit

Note: Kits include Shank Holder, Points, Seed / Fert Holder and Fasteners

Points	Page 5
Backshoots	Page 8
Tyne Frames	Page 8
Fasteners	Page 23

Single Shoot

Single Row Point Boot Kit



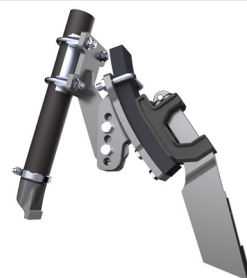
PB-1000 \$238

Paired Row Point Boot Kit



PB-1100 \$264

Flexi Point Boot Kit



PB-1200 \$278

Double Shoot

Single Row Point Boot Kit



PB-2000 \$259

Paired Row Point Boot Kit



PB-2100 \$284

Flexi Point Boot Kit



PB-2200 \$291

Inline Series



Inline Series Seeding Kit

Edge On Tyne	Single Row	PB-2403	\$319
	Paired Row	PB-2401	\$319
	Side Banded	PB-2402	\$330
C-Shank Tyne	Single Row	PB-2408	\$319
	Paired Row	PB-2406	\$319
	Side Banded	PB-2407	\$330

When ordering a point boot kit please specify

Slot Mate Point:

Adapter (7/16" or 1/2"):

Edge On
Tyne



C-Shank
Tyne



Curved - Suit C-Shank

<p>Single Row IS-1008 \$238</p>	<p>Side Banded IS-1007 \$249</p>	<p>Paired Row IS-1006 \$238</p>
<p>Flat - Suit Edge On</p>		
<p>Single Row IS-1003 \$238</p>	<p>Side Banded IS-1002 \$249</p>	<p>Paired Row IS-1001 \$238</p>

- Accurate Seed Placement
- Simple To Set Up And Very Durable
- Deep Banding Liquid And Grandular Fertiliser

Bourgault Paralink



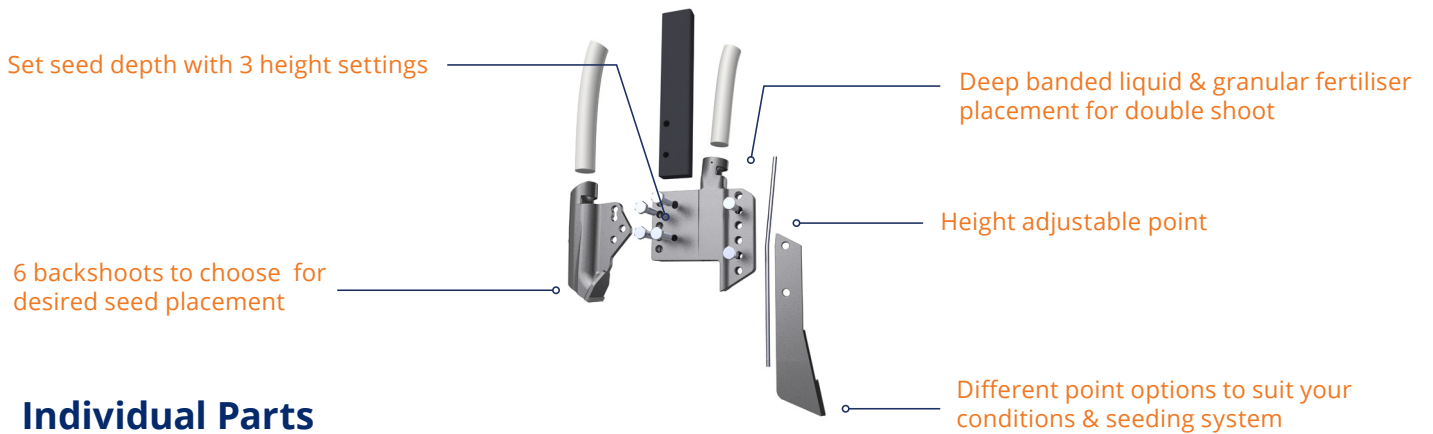
Bourgault Paralink Seeding Kit

Double Shoot	PC-3001	\$324
--------------	----------------	--------------

When ordering please specify

Backshoot: _____

Point: _____



Individual Parts

CK Point



PT-1026

\$103

CK Point - Liquid Tube



PT-1027

\$115

CK Point - Liquid Block



PT-1028

\$115

CK Point with Side Plates



PT-1029

\$115

CK Point SLL



PT-1038

\$127

20mm Narrow



BS-1229

\$113

30mm Single Row



BS-1241

\$108

50mm Single Row



BS-1242

\$108

40mm Paired Row



BS-1260

\$127

70mm Paired Row



BS-1244

\$127

Side Banded



BS-1250

\$123

PLDS Openers

1/4" Push Fitting



FA-0808

\$8

SS Tube 31.8 OD



BS-0359

\$9

PLDS Point 12mm



PT-1040

\$164

PLDS Point 15mm



PT-1041

\$170

PLDS Point SLL



PT-1042

\$198

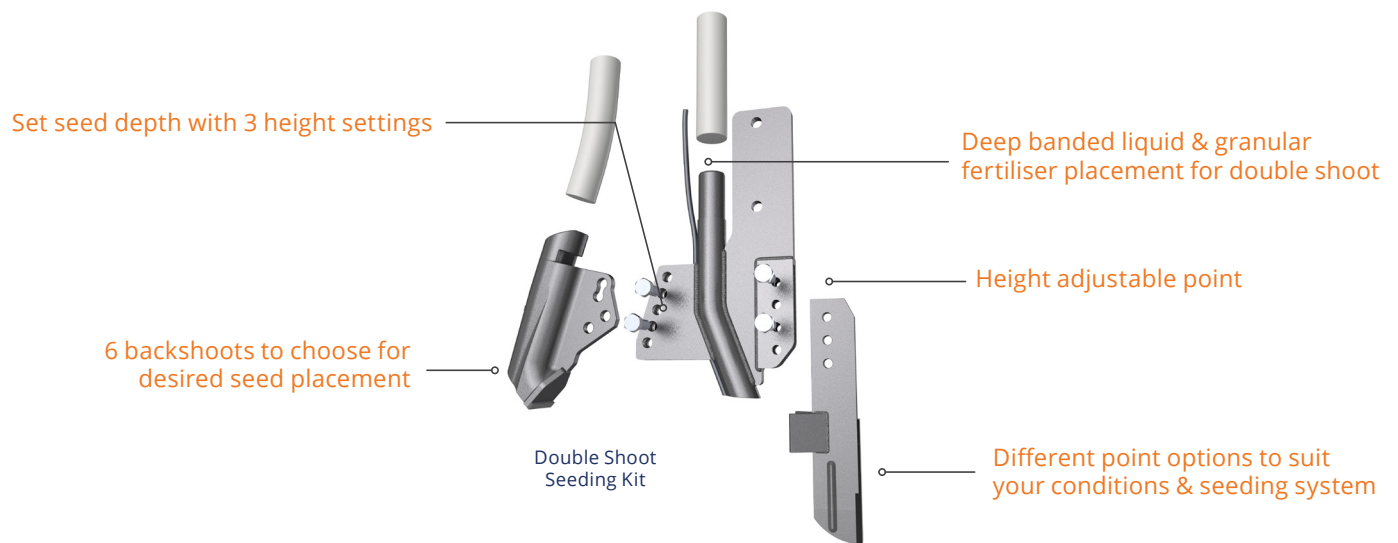
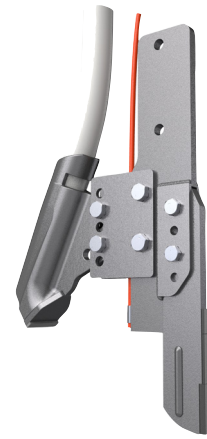
Morris Quantum Seeding Kit

Single Shoot	PC-2001	\$351
Double Shoot	PC-2002	\$408

When ordering please specify

Backshoot:

Point:



Replacement Parts

CT Point	CT Point Hardfaced	CTQ Point	CTQ Point SLL	Morris C1	Morris C2
Suit C2	Suit C2	Suit Quantum	Suit Quantum		
PT-1030 \$76	PT-1031 \$88	PT-1034 \$79	PT-1036 \$99	PT-1035 \$136	PT-1060 \$136
20mm Narrow	30mm Single Row	50mm Single Row	40mm Paired Row	70mm Paired Row	Side Banded
BS-1229 \$113	BS-1230 \$108	BS-1240 \$108	BS-1260 \$127	BS-1262 \$127	BS-1255 \$123

NEW RELEASE

Fits Ausplow Pro-D adaptor

Maxi Digger



6" - PT-1125	\$67
7" - PT-1130	\$70
8" - PT-1135	\$73

Maxi Digger Hardfaced



6" - PT-1126	\$77
7" - PT-1131	\$80
8" - PT-1136	\$83

Maxi Digger Super Long Life



6" - PT-1127	\$92
7" - PT-1132	\$95
8" - PT-1137	\$98

Roll Pin



Included free with every point

PT-10EP FREE

- Excellent wear life
- Roll pin included with point
- In stock in Perth NOW!

Individual Parts

Slot Mate A 6"



PT-1071 \$79

Slot Mate A 6" SLL



PT-1076 \$101

Slot Mate A 7"



PT-1072 \$79

Slot Mate A 7" SLL



PT-1077 \$101

Slot Mate A 8"



PT-1073 \$79

Slot Mate A 8" SLL



PT-1078 \$101

Upgrades

Quick Change Adaptor



PT-1070 \$16

Hardfacing



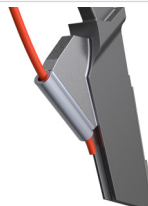
PT-UPH \$23

Liquid Tub Holder - Nut



PT-UPN \$4

Liquid Tube Holder - Block



PT-UPS \$28

Conserva Pak / JD 1870

Conserva Point



PT-1006 \$88

Conserva Point Hardfaced



PT-1019 \$99

Conserva Point SLL



PT-1020 \$111

Conserva Sweep 12"



PT-2025 \$102

Roll Pin 3/8"



PT-1008 \$2

Single Row 50mm



BS-1287 \$79

Single Row 20mm



BS-1288 \$79

Paired Row



BS-1285 \$96

Fertiliser Shoot



BS-1286 \$73

Bolt/Nut



FA-0300/FA-0428 \$2/\$0.60

Press Wheel - V - Profile



Includes bush kit to suit Cpak axle.

SP-1105 \$308

Press Wheel - Flat



Includes bush kit to suit Cpak axle.

SP-1107 \$308

Press Wheel Scraper



SS-1218 \$25

Suit Opener Tyne



SS-1219 \$29

Suit Seeding Tyne



SS-1220 \$29

Horsch Sprinter

SINGLE SHOOT Basic Seeding Kit



PC-5004 \$285

- 1 Piece Kit
- Replaceable Knife Point

SINGLE SHOOT Maxi Seeding Kit



PC-5003 \$345

- Replaceable Knife Point
- 7 Backshoot options
- Height adjustable backshoot for better seed placement

DOUBLE SHOOT Deep Banded Seeding Kit



PC-5002 \$375

- Replaceable Knife Point
- Deep Banding Fertiliser
- 7 Backshoot options
- Height adjustable Backshoot for better seed placement
- Liquid options with point behind backshoot

Points

CTQ Point



PT-1034 \$79

CTQ Point Hardfaced



PT-1033 \$89

CTQ Point SLL



PT-1036 \$99

CTQ Point Winged



PT-1037 \$89

Seed Hawk

Front Seeding Kit



PC-7001 \$220

Rear Seeding Kit



PC-9002 \$190

Note: Kits include Shank Holder, Points, Seed / Fert Holder and Fasteners

Points

CTQ Point



PT-1034

\$79

CTQ Point Hardfaced



PT-1033

\$89

CTQ Point SLL



PT-1036

\$99

CTQ Point Winged

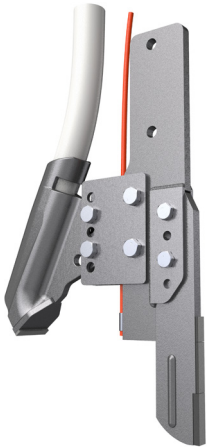


PT-1037

\$89

Simplicity

Single Shoot Seeding Kit



PC-6002 \$310

Double Shoot Seeding Kit



PC-6001 \$340

Note: Kits include Shank Holder, Points, Seed / Fert Holder and Fasteners

Points

CTQ Point



PT-1034

\$79

CTQ Point Hardfaced



PT-1033

\$89

CTQ Point SLL



PT-1036

\$99

CTQ Point Winged

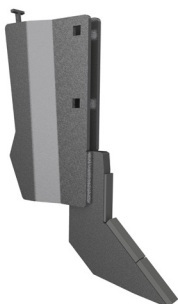


PT-1037

\$89

Seed Master

Seedmaster Front



PC-9101 \$130

Seedmaster Rear



PC-9102 \$110

Single System

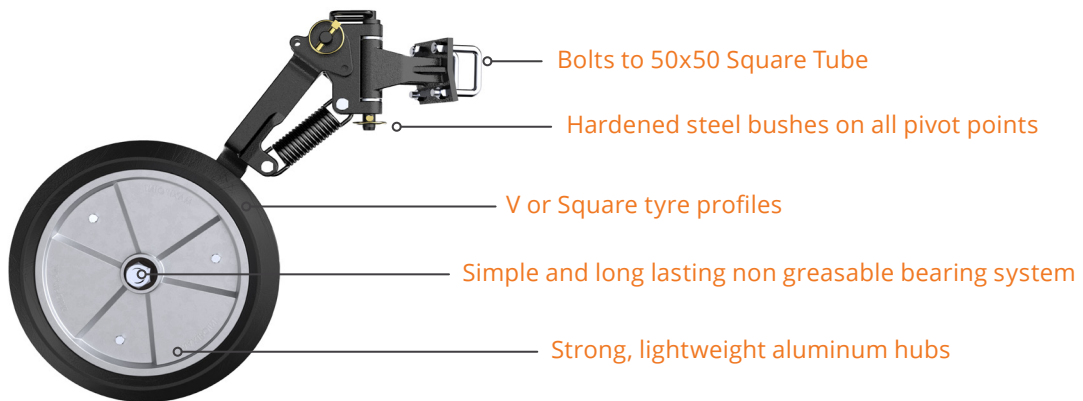


Single Press Wheel System

V-Profile	SS-1200	\$425
Square Profile	SS-1202	\$425

Note: Kit includes Wheel, Main Frame, Axle, U-Bolts, Nuts and Spacers.

For replacement parts please visit:
www.maxipoint.com.au



Individual Parts

Wheel Only – V Profile



SP-1100

\$298

Wheel Only – Square Profile



SP-1101

\$298

Extension Bar Kit



SS-0110

\$334

Vertical Bar Kit



SS-0109

\$108



Coulter System

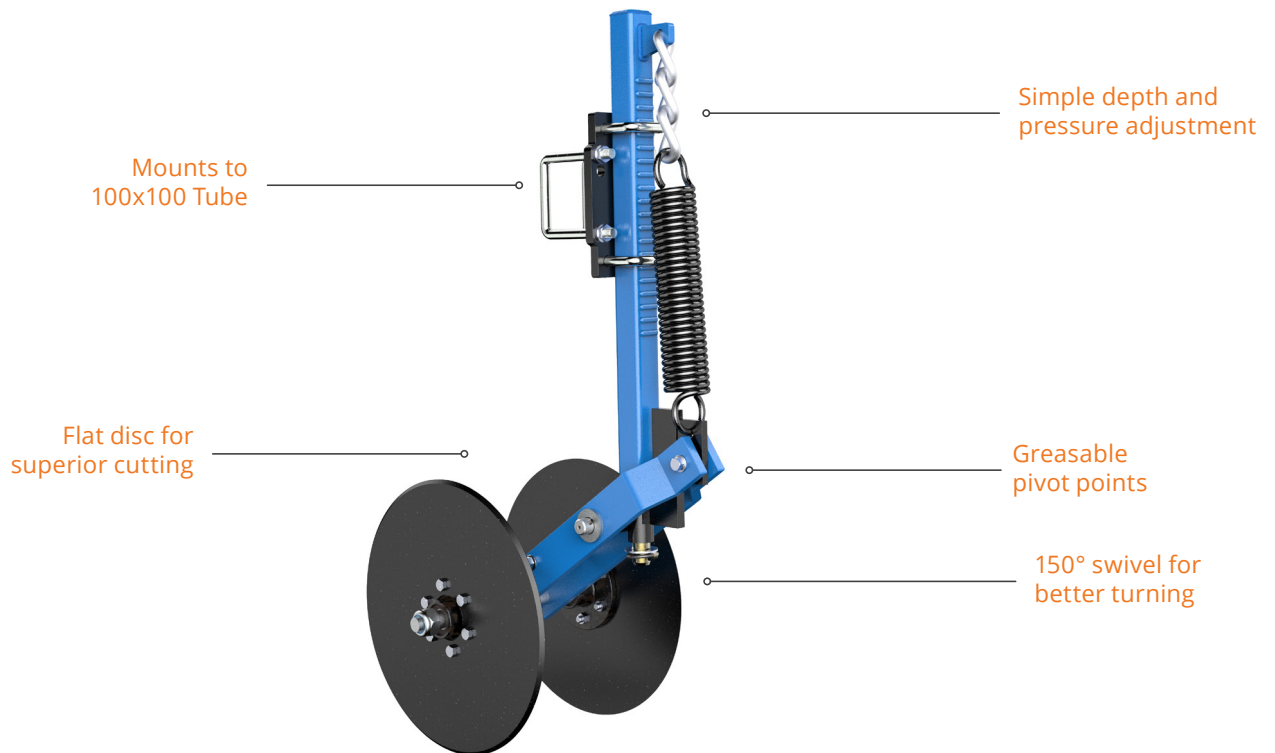
Twin Disc Coulter System

Twin Disc Coulter System	CS-1300	\$1500
--------------------------	----------------	---------------

Note: Kit Includes Swivel, Spine, Arms, Axels, Agri-Hubs, Discs and Fasteners.

When ordering please specify

Inch Spacing (9, 10, 11, 12)

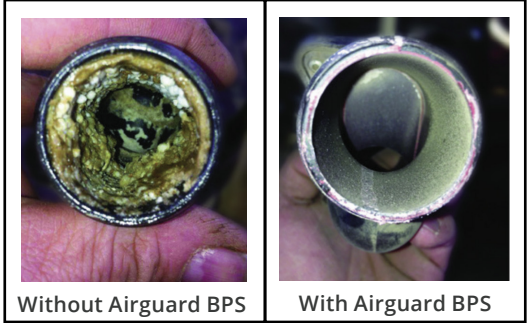


Blockage Prevention Systems



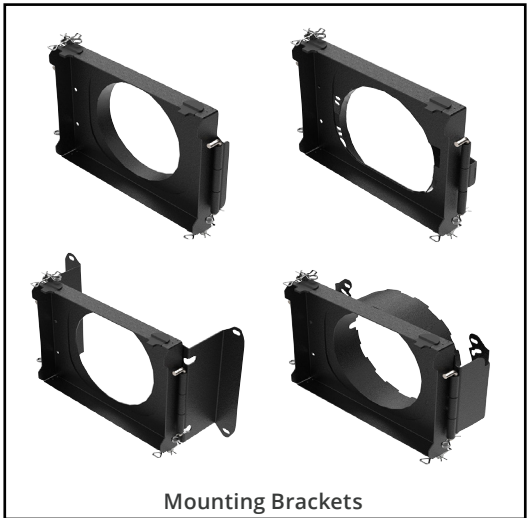
Pricing

Blockage Prevention System	BS-7995	\$4,980
Mounting Bracket	Refer List	\$712
Dual Snorkel Kit	BS-7676	\$1,200
Universal Snorkel Mount Kit	BS-7860	\$685



Mounting Bracket Checklist

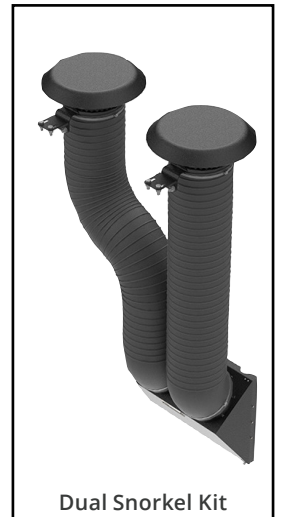
Fan Hydraulic & Bracket Kit: Fits Morris	BS-9630
Fan Hydraulic & Bracket Kit: Fits John Deere Airpower 2 Fan	BS-9570
Fan Hydraulic & Bracket Kit: Fits Bourgault	BS-9510
Fan Hydraulic & Bracket Kit: Fits John Deere 1910 With Cast Aluminum Fan	BS-9530
Fan Hydraulic & Bracket Kit: Fits CNH & Flexicoil - Crary Fan	BS-9500
Fan Hydraulic & Bracket Kit: Fits CNH - Crary Fan - Cast - For Top Fan	BS-9625



Benefits

Airguard Blockage Prevention systems are quick and easy to install with any air drill to deliver optimum results.

- **Seed in wet and dry conditions**
Work in humid conditions without plugging issues.
- **Reduce humidity**
Significantly decrease the moisture in your air drill to reduce plugging issues.
- **Low oil temperature**
Keep your oil cool and hydraulic system running efficiently.
- **Use fine fertilisers**
Eliminate the hassle of plugging problems with powdery fertilisers.



OPTIMISE YOUR SEEDING PROGRAM

About Seed Brakes

AIRGUARD Seed Brakes are designed to help you achieve consistent optimum air flow across every opener on your air drill to achieve perfect seed and fertiliser placement. Controlled by a series of washers at the exhaust port, the adjustable air speed allows you to match your specific type of opener and achieve more efficiency with no seed bounce.

Benefits

- **Minimise seed damage.** The seed brake uses a spiral system to slow seed flow: there are no baffles for the seeds to hit against
- **Lower cost AIRGUARD.** Seed Brakes are competitively priced making it an affordable investment
- **Deliver durability.** The UV protected plastic withstands harsh weather conditions
- **Reduce seed waste.** Controlled airflow eliminates seed bounce and seed soil mixing
- **Improve yield.** With optimum seed and fertiliser placement
- **Prevent plugging.** Modify airflow to match your specific type of opener

Individual Parts

38mm Seed Brake – Stainless



BS-7360

\$123

32mm Seed Brake – Plastic



BS-7330

\$53

38mm Seed Brake – Plastic



BS-7340

\$59

Full Exhaust Seed Brake – Stainless



BS-7350

\$53

Exhaust Port Kit



BS-7336

\$16

Adapter Kit for BS-7340/BS-7360 – 32-38mm



BS-7344

\$9

Wind Meter



BS-7400

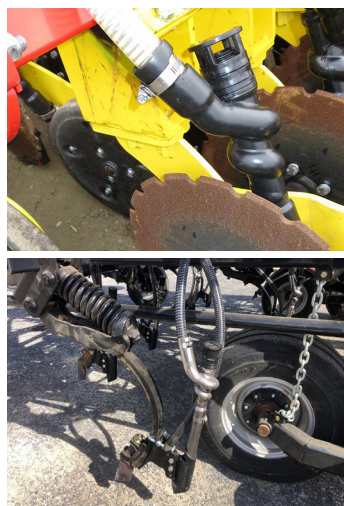
\$56

Exhaust Port Mesh Screen



BS-7357

\$5.40



Blockage Monitors

Benefits

Precision Monitoring

Equipped with 16-row indicators per module and a seven-segment display, the ASM II alerts you if your seeding rate falls below a programmable seeds per second threshold. You can customise the minimum seeds per second alarm point for 1 - 150 seeds per 2 seconds. The system monitors blockage for up to 128 rows or 120 rows and 8 hopper-level sensors.

Customisable for Your Equipment

Thanks to a modular design, the ASM II can reduce harnessing and wiring costs, requiring fewer wires and splitters running to the tractor hitch. Customise the ASM II to fit your needs by adding up to eight modules.

State-Of-The-Art Technology

The ASM II is designed with advanced RS485 communication models that can receive input from 16 seed flow sensors (or 15 sensors and one hopper level sensor). Added features on the ASM II include an internal audible alarm, five-step LED dimming for day or night use, and alarm recognition override.



Vigilense Blockage Sensor

Features

- Detects the smallest canola seed to the largest fertiliser granule
- Detects predetermined blockage percent level, not just “flowing” or “blocked”
- Economical flow and row blockage detection
- A modular concept allows easy system customization
- Monitors up to 128 rows and 8 hoppers
- 8 sensor modules scanning capability
- 16-row display capability per sensor module or 15 rows and 1 hopper level sensor
- Vigilense Seed flow sensor for detection of various seed sizes including rapeseed’s
- Implement lift switch input
- Display with 16-row indicators
- Adjustable alarm
- Five step LED dimming for full sunlight/nighttime use
- Internal audible alarm (chirp/blare output)

For pricing please contact Maxipoint.

Fasteners / Parts / Accessories

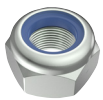
Hex Bolts



7/16 x 2 1/4	FA-0315	\$1.60
7/16 x 2 1/2	FA-0316	\$1.60
7/16 x 2 3/4	FA-0317	\$1.60
1/2 x 2 1/4	FA-0321	\$1.60

1/2 x 2 1/2	FA-0322	\$1.60
1/2 x 2 3/4	FA-0323	\$1.60
1/2 x 3	FA-0324	\$1.90
1/2 x 3 1/2	FA-0337	\$2.90

Nuts



7/16" Nyloc Nut	FA-0409	\$0.60
1/2" Nyloc Nut	FA-0410	\$0.60
1/2" Cone Lock	FA-0434	\$0.65

Plough Bolts



7/16 x 2 1/4"	FA-0380	\$2
7/16 x 2 1/2"	FA-0381	\$2
1/2 x 2 1/2"	FA-0382	\$2

Washers



7/16" Flat	FA-0555	\$0.30
7/16" Spring	FA-0560	\$0.30

1/2" Flat	FA-0556	\$0.30
1/2" Spring	FA-0561	\$0.30

U-Bolts



M12 x 50 x 60 Leg	FA-0703	\$8
M12 x 50 x 80 Leg	FA-0702	\$9
M12 x 75	FA-0704	\$16
M12 x 100	FA-0705	\$21

M10 x 50 Round	FA-0708	\$8
M16 x 50 x 90 Leg	FA-0710	\$26
M16x100x140Leg	FA-0711	\$31

Pins

Lynch Pin



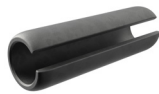
FA-0802 \$2

HD Lynch Pin



FA-0803 \$3

Roll Pin 8mm



PT-10EP \$2
Suit Ezi Fit.

Roll Pin 3/8"



PT-1008 \$2
Suit Conserva Pak

Split Pin 3/16"



FA-0805 \$2

Split Pin 1/4"



FA-0801 \$2

Accessories

Hose Clamp 30-45mm



BS-1290 \$6.50

1/4" Push Fit Joiner



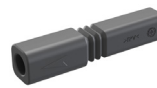
FA-0808 \$8

Line Locker



FA-0809 \$7

Rubber Union



FA-0810 \$8.50

Optimise Your Seeding Program



Tel 08 9354 1111 | Fax 08 9354 3789
sales@maxipoint.com.au

HEAD OFFICE
69-71 Catalano Circuit, Canning Vale WA 6155

maxipoint.com.au

Terms and Conditions

All prices in the product and price guide are recommended retail pricing only and exclude GST. Maxipoint reserves the right to change prices and specifications without notice. Maxipoint recommends that you consult your agronomist to determine suitability of Maxipoint products for your application. Maxipoint will not accept liability for any loss or damage caused by or as a consequence of the use of its products.

Warranty

Maxipoint offers a full replacement warranty for any faulty products. Maxipoint pays freight on replacements. Warranty is valid for 1 year from the date of purchase and covers all Maxipoint products. For more warranty information please see our warranty claim form on the website or speak to your supplying dealer.