

EYELASHES

NATURAL COLLECTION

EYELASH DIS

Eyelashes | Countertop Display



K-MC4C

Clingy Mate Lash Adhesive | Clear



K-CM4B

Clingy Mate Lash Adhesive | Black



This Eyelash Countertop Display beautifully displays the full Eyelash and lash adhesive collection. These Eyelashes are easy-to-apply and naturally open the eyes, making your lashes longer and fuller.

Includes 66 eyelash styles (1 dozen each) / includes 2 eyelash adhesive styles (2 dozens each)

DISPLAY	QUANTITY	LASHES	QUANTITY	LASH ADHESIVE	QUANTITY
Units per display	70 dozens	Per inner box Per master case	6 dozens 120 dozens	Per inner box Per master case	12 dozens 48 dozens

EYELASHES

NATURAL COLLECTION

NATURAL VOLUME & LENGTH

100% NATURAL HUMAN HAIR

HANDMADE

REUSABLE

CRUELTY-FREE



ELASH-1



ELASH-5



ELASH-13



ELASH-20



ELASH-38



ELASH-42



ELASH-43



ELASH-46



ELASH-47



ELASH-48



ELASH-61



ELASH-66

EYELASHES

NATURAL COLLECTION



ELASH-74



ELASH-76



ELASH-79



ELASH-82



ELASH-102



ELASH-106



ELASH-110



ELASH-117



ELASH-118



ELASH-119



ELASH-138



ELASH-202

EYELASHES

NATURAL COLLECTION



ELASH-205



ELASH-217



ELASH-218



ELASH-307



ELASH-412



ELASH-415



ELASH-505



ELASH-600



ELASH-601



ELASH-605



ELASH-702



ELASH-747S

EYELASHES

NATURAL COLLECTION



ELASH-747M



ELASH-747L



ELASH-805



ELASH-DW



ELASH-DWSP



ELASH-MWSP



ELASH-WSP



ELASH-FS



ELASH-FM



ELASH-FL

EYELASHES

3D FAUX MINK COLLECTION

3D-ELASHSET-MIX

3D Silk Mink Eyelash Display | Set 3D Mix (3D Lashes #1–48 & Premium Lashes #1–18)



3D-1



3D-2



3D-3



3D-4



3D-5



3D-6



3D-7



3D-8



3D-9



3D-10



3D-11



3D-12

The 3D Faux Mink False Eyelash collection is curated to amplify your eye look from day to night in a blink of an eye. These lashes are delicately composed of ultra soft, 3D, high-quality synthetic fibers that mimic mink to provide the natural-look of volume, length and a touch of drama—all-in-one.

Display is provided for free with purchase of all 3D Premium Lashes. See all Premium lash styles starting on page 91.

Display dimensions: 22" (W) x 68 1/2" (H)

Thickness: 1.2"

Bottom diameter: 16" x 16"

Weight: 47 lbs

All lashes should fit perfectly on the metal display stand.

DISPLAY

Units per display

3D Lashes: #1–48

Premium Lashes: #1–18

QUANTITY

66 dozens

LASHES

Per inner box

Per master case

QUANTITY

6 dozens

48 dozens

EYELASHES

3D FAUX MINK COLLECTION

MULTI-LAYERED 3D EFFECT

REUSABLE UP TO 10 TIMES

LIGHTWEIGHT

VEGAN

ULTRA SOFT

CRUELTY-FREE



3D-1



3D-2



3D-3



3D-4



3D-5



3D-6



3D-7



3D-8



3D-9

NEW
STYLE



3D-10

NEW
STYLE



3D-11



3D-12

EYELASHES

3D FAUX MINK COLLECTION



3D-13

NEW
STYLE



3D-14

NEW
STYLE



3D-15

NEW
STYLE



3D-16



3D-17



3D-18



3D-19



3D-20



3D-21



3D-22



3D-23



3D-24

EYELASHES

3D FAUX MINK COLLECTION



3D-25

NEW
STYLE



3D-26



3D-27



3D-28



3D-29



3D-30



3D-31



3D-32



3D-33



3D-34



3D-35



3D-36

EYELASHES

3D FAUX MINK COLLECTION



3D-37



3D-38



3D-39

NEW
STYLE



3D-40

NEW
STYLE



3D-41



3D-42



3D-43

NEW
STYLE



3D-44



3D-45

NEW
STYLE



3D-46



3D-47



3D-48

NEW
STYLE

EYELASHES

3D FAUX MINK COLLECTION

3D-LASHPACK

3D Silk Mink Eyelash Display | Set 3D Mix (3 Pair & 5 Pair)



K-MC4C

Clingy Mate Lash Adhesive | Clear



K-CM4B

Clingy Mate Lash Adhesive | Black



LAN-01

Eyelash Applicator | Dual Tip



LAN-02

Eyelash Applicator | Point Tip

The 3D Faux Mink False Eyelash collection is curated to amplify your eye look from day to night in a blink of an eye. These lashes are delicately composed of ultra soft, 3D, high-quality synthetic fibers that mimic mink to provide the natural-look of volume, length and a touch of drama—all-in-one.

Display holds sets of 3 packs and 5 packs of lashes.

Display dimensions: 22" (W) x 68 1/2" (H)

Thickness: 1.2"

Bottom diameter: 16" x 16"

Weight: 47 lbs

All lashes should fit perfectly on the metal display stand.

3 PACK

Per inner box
Per master case

QUANTITY

3 dozens
24 dozens

5 PACK

Per inner box
Per master case

QUANTITY

3 dozens
24 dozens

EYELASHES

3D FAUX MINK COLLECTION



3D3P-03



3D-3



3D3P-04



3D-4



3D3P-06



3D-6



3D3P-07



3D-7



3D3P-12



3D-12



3D3P-18



3D-18



3D3P-27



3D-27



3D3P-29



3D-29



3D3P-30



3D-30



3D3P-47



3D-47



3D3P-MIX1

Mix of 3 lash styles



3D-3



3D-6



3D-7



3D3P-MIX2

Mix of 3 lash styles



3D-18



3D-27



3D-29

EYELASHES

3D FAUX MINK COLLECTION



3D3P-MIX3
Mix of 3 lash styles



3D-4



3D-8



3D-12



3D3P-MIX4
Mix of 3 lash styles



3D-22



3D-23



3D-47



3D3P-MIX5
Mix of 3 lash styles



3D-30



3D-35



3D-36

EYELASHES

3D FAUX MINK COLLECTION



3D-3

3D5P-03



3D-4

3D5P-04



3D-6

3D5P-06



3D-7

3D5P-07



3D-12

3D5P-12



3D-18

3D5P-18



3D-27

3D5P-27



3D-29

3D5P-29



3D-30

3D5P-30



3D-47

3D5P-47

EYELASHES

PREMIUM 3D MINK COLLECTION

CO-PM

3D Premium Mink Lashes



PM-01



PM-02



PM-03



PM-04



PM-05



PM-06



PM-07



PM-08



PM-09

The Premium 3D Mink Lashes are designed to give you the fiercest of looks. Made with the finest multi-layered silk mink material featuring 20 and 25mm of complete drama. With its long-lasting, high-quality and flexible band, your comfort will always be its number one priority.

See all 20mm and 25mm lash styles starting on the following page.

Display dimensions: 22" (W) x 68 1/2" (H)

Thickness: 1.2"

Bottom diameter: 16" x 16"

Weight: 47 lbs

All lashes should fit perfectly on the metal display stand.

DISPLAY

Units per display

QUANTITY

18 dozens

VARIANT

Per inner box

QUANTITY

6 dozens

EYELASHES

PREMIUM 3D MINK COLLECTION

MULTI-LAYERED 3D EFFECT

REUSABLE UP TO 10 TIMES

LIGHTWEIGHT

VEGAN

ULTRA SOFT

CRUELTY-FREE



PM-01



PM-02



PM-03



PM-04



PM-05



PM-06



PM-07



PM-08



PM-09



PM-10



PM-11



PM-12

EYELASHES

PREMIUM 3D MINK COLLECTION



PM-13



PM-14



PM-15



PM-16



PM-17



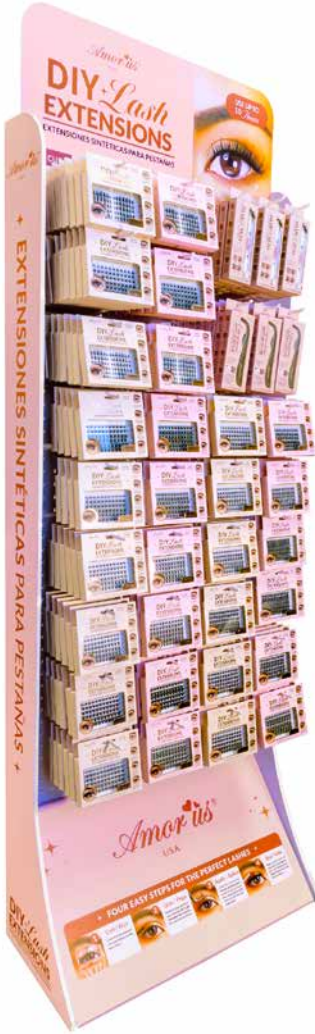
PM-18

EYELASHES

DIY LASH EXTENTIONS COLLECTION

DIY-DISPLAY

DIY Lash Extensions Display



LAN-03

Lash Extension Applicator



CLOSE-UP



CO-GNSD

DIY Lash Extensions | Glue&Seal

Create a unique and versatile lash combo with these DIY Lash Extensions by Amorus. This collection is designed to customize your style for any occasion. Each cluster features high quality faux mink and extra comfortable band for up to 10 uses.

See all small-medium and medium-large lash styles starting on the following page.

DISPLAY

Per inner box
Per master case

QUANTITY

3 dozens
12 dozens

Display dimensions: 60 cm (W) x 179 cm (H)

Thickness: 1.2"

Bottom diameter: 60 cm x 30cm

Weight: 47 lbs

All lashes should fit perfectly on the metal display stand.

EYELASHES

DIY LASH EXTENTIONS COLLECTION

C-CURL EFFECT

EASY TO APPLY

FULLY CUSTOMIZABLE

LONG LASTING

COMFORTABLE

CRUELTY-FREE



DIY-1-SM

Small-Medium | 8mm to 14mm



DIY-1-ML

Medium-Large | 10mm to 16mm



DIY-2-SM

Small-Medium | 8mm to 14mm



DIY-2-ML

Medium-Large | 10mm to 16mm



DIY-3-SM

Small-Medium | 8mm to 14mm



DIY-3-ML

Medium-Large | 10mm to 16mm



DIY-4-SM

Small-Medium | 8mm to 14mm



DIY-4-ML

Medium-Large | 10mm to 16mm



DIY-5-SM

Small-Medium | 8mm to 14mm

EYELASHES

DIY LASH EXTENTIONS COLLECTION



DIY-5-ML
Medium-Large | 10mm to 16mm



DIY-6-SM
Small-Medium | 8mm to 14mm



DIY-6-ML
Medium-Large | 10mm to 16mm



DIY-7-SM
Small-Medium | 8mm to 14mm



DIY-7-ML
Medium-Large | 10mm to 16mm



DIY-8-SM
Small-Medium | 8mm to 14mm



DIY-8-ML
Medium-Large | 10mm to 16mm



DIY-9-SM
Small-Medium | 8mm to 14mm



DIY-9-ML
Medium-Large | 10mm to 16mm

EYELASHES

DIY LASH EXTENTIONS COLLECTION



DIY-10-SM
Small-Medium | 8mm to 14mm



DIY-10-ML
Medium-Large | 10mm to 16mm



DIY-11-SM
Small-Medium | 8mm to 14mm



DIY-11-ML
Medium-Large | 10mm to 16mm

EYELASHES

LASH TOOLS

LAN-03

Lash Extension Applicator



This Curved Tip Lash Extension Applicator by Amorus is ideal for precise, professional-looking lash extensions at home. Designed for your comfort with beginner-friendly shape and easy-to-clean stainless steel. It's a perfect match for Amorus DIY Lash Extensions.

Easy to use / ideal for extensions / comfortable grip / stainless steel / cruelty-free



DISPLAY

Units per display
Per master case

QUANTITY

1 dozen
24 dozens

CO-GNSD

DIY Lash Extensions | Glue&Seal



The Glue & Seal system is a perfect match for the Amorus DIY Lash Extensions, ensuring a long-lasting effect with a non-sticky and mess-free formula.

Easy to apply / comfortable / long lasting / cruelty-free



CLOSE-UP



DISPLAY

Units per display
Per master case

QUANTITY

3 dozens
24 dozens

VARIANT

Per inner box

6 pieces

EYELASHES

LASH TOOLS

LASHC-01

Eyelash Curler | Flat Handle



Enjoy maximum lift effect with this eyelash curler by Amorus. Adapted to fit all eye types. This high-quality professional grade tool is the perfect addition to your beauty routine.

Pinch free / comfortable handle / maximum lift effect / cruelty-free



DISPLAY

Units per display
Per master case

QUANTITY

1 dozen
24 dozens

LASHC-02

Eyelash Curler | Hoop Handle



Enjoy maximum lift effect with this eyelash curler by Amorus. Adapted to fit all eye types. This high-quality professional grade tool is the perfect addition to your beauty routine.

Pinch free / comfortable handle / maximum lift effect / cruelty-free



DISPLAY

Units per display
Per master case

QUANTITY

1 dozen
24 dozens

EYELASHES

LASH TOOLS

K-G7C

Glued In Lash Adhesive 7g | Clear



Glued In lash adhesive by Amorus is compatible with any style eyelash, from synthetic to natural fibers. Its quick drying Formaldehyde-free formula was designed to last in place throughout the day.

Long-lasting / quick-drying / waterproof / formaldehyde-free / made in Korea / easy to remove / no lifting / no tackiness / cruelty-free



DISPLAY

Units per pack
Per inner box
Per master case

QUANTITY

1 dozen
12 dozens
48 dozens

K-G7B

Glued In Lash Adhesive 7g | Black



Glued In lash adhesive by Amorus is compatible with any style eyelash, from synthetic to natural fibers. Its quick drying Formaldehyde-free formula was designed to last in place throughout the day.

Long-lasting / quick-drying / waterproof / formaldehyde-free / made in Korea / easy to remove / no lifting / no tackiness / cruelty-free



DISPLAY

Units per pack
Per inner box
Per master case

QUANTITY

1 dozen
12 dozens
48 dozens

EYELASHES

LASH TOOLS

K-CM4C

Clingy Mate Lash Adhesive | Clear

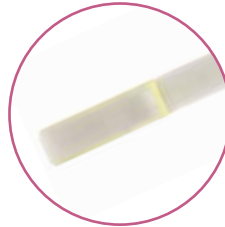


This Clingy Mate Lash Adhesive is compatible with any eyelash style, including synthetic and natural fibers.

Long-lasting / waterproof / formaldehyde-free / silicone tip / vegan / cruelty-free



CLOSE-UP



DISPLAY

Units per display
Per master case

QUANTITY

1 dozen
24 dozens

K-CM4B

Clingy Mate Lash Adhesive | Black



This Clingy Mate Lash Adhesive is compatible with any eyelash style, including synthetic and natural fibers.

Long-lasting / waterproof / formaldehyde-free / silicone tip / vegan / cruelty-free



CLOSE-UP



DISPLAY

Units per display
Per master case

QUANTITY

1 dozen
24 dozens

EYELASHES

LASH TOOLS

LAN-01

Eyelash Applicator | Dual Tip



This Dual Tip Eyelash Applicator is an easy to use tool that applies lashes quickly and on point.
Easy to use / silicon tip / comfortable grip / cruelty-free



DISPLAY

Units per pack
Per master case

QUANTITY

1 dozen
24 dozens

LAN-02

Eyelash Applicator | Point Tip



This Point Tip Eyelash Applicator is designed to give you a precise false eyelash application with its easy-to-use and beginner friendly shape.

Easy to use / ideal for lash strips / comfortable grip / cruelty-free



DISPLAY

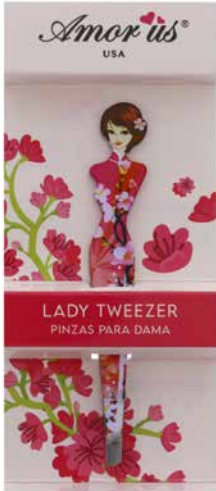
Units per pack
Per master case

QUANTITY

1 dozen
24 dozens

TZ-LADY

Sexy Lady Tweezer



This Sexy Lady Tweezer is designed to give you a precise false eyelash application with its easy-to-use and beginner friendly shape. This tool applies lashes in a breeze with its multi-purpose tip.

Easy to use / double-sided / professional quality / cruelty-free

PACK

Units per pack
Per master case

QUANTITY

1 dozen
24 dozens