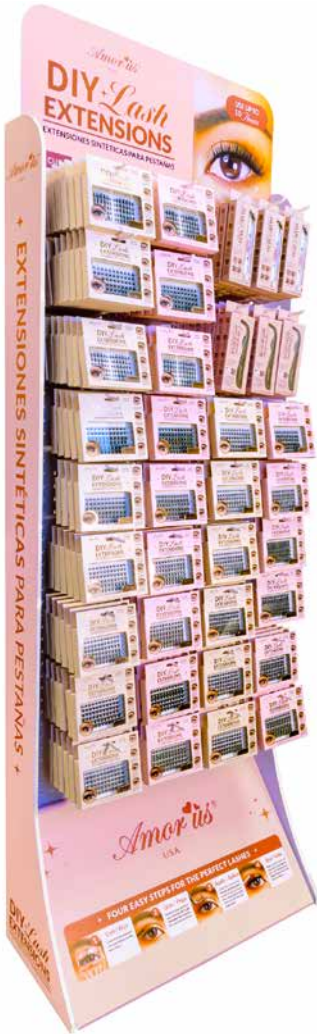


EYELASHES

DIY LASH EXTENTIONS COLLECTION

DIY-DISPLAY

DIY Lash Extensions Display



LAN-03

Lash Extension Applicator



CLOSE-UP

CO-GNSD

DIY Lash Extensions | Glue&Seal

Create a unique and versatile lash combo with these DIY Lash Extensions by Amorus. This collection is designed to customize your style for any occasion. Each cluster features high quality faux mink and extra comfortable band for up to 10 uses.

See all small-medium and medium-large lash styles starting on the following page.

DISPLAY

Per inner box
Per master case

QUANTITY

3 dozens
12 dozens

Display dimensions: 60 cm (W) x 179 cm (H)

Thickness: 1.2"

Bottom diameter: 60 cm x 30cm

Weight: 47 lbs

All lashes should fit perfectly on the metal display stand.

EYELASHES

DIY LASH EXTENTIONS COLLECTION

C-CURL EFFECT

EASY TO APPLY

FULLY CUSTOMIZABLE

LONG LASTING

COMFORTABLE

CRUELTY-FREE



DIY-1-SM
Small-Medium | 8mm to 14mm



DIY-1-ML
Medium-Large | 10mm to 16mm



DIY-2-SM
Small-Medium | 8mm to 14mm



DIY-2-ML
Medium-Large | 10mm to 16mm



DIY-3-SM
Small-Medium | 8mm to 14mm



DIY-3-ML
Medium-Large | 10mm to 16mm



DIY-4-SM
Small-Medium | 8mm to 14mm



DIY-4-ML
Medium-Large | 10mm to 16mm



DIY-5-SM
Small-Medium | 8mm to 14mm

EYELASHES

DIY LASH EXTENTIONS COLLECTION



DIY-5-ML
Medium-Large | 10mm to 16mm



DIY-6-SM
Small-Medium | 8mm to 14mm



DIY-6-ML
Medium-Large | 10mm to 16mm



DIY-7-SM
Small-Medium | 8mm to 14mm



DIY-7-ML
Medium-Large | 10mm to 16mm



DIY-8-SM
Small-Medium | 8mm to 14mm



DIY-8-ML
Medium-Large | 10mm to 16mm



DIY-9-SM
Small-Medium | 8mm to 14mm



DIY-9-ML
Medium-Large | 10mm to 16mm

EYELASHES

DIY LASH EXTENTIONS COLLECTION



DIY-10-SM
Small-Medium | 8mm to 14mm



DIY-10-ML
Medium-Large | 10mm to 16mm



DIY-11-SM
Small-Medium | 8mm to 14mm



DIY-11-ML
Medium-Large | 10mm to 16mm