

WHEEL HOE OPERATING INSTRUCTIONS

- Connect a Blade Assembly or other Wheel Hoe attachment using the **Quick Release Pin**.
- Adjust the handle height so that the operator's hands are at waist level.
- For light weeding in loose soil, the operator may walk along steadily, keeping the blade 1/2" to 1" below the soil surface.
- In heavy soils or with larger weeds, a back and forth motion may be required. The oscillating action of the blade dislodges weeds.
- Wheel Hoe blades come unsharpened for your safety. For larger weeds or tighter soils, it helps to sharpen the blade with a **Mill Bastard File** or **Speedy Sharp**.

WHEEL HOE ATTACHMENTS



Blade Assembly



Furrower



Four Tine Cultivator



Hiller

THE BROADFORK

The broadfork is excellent for opening soils to 12" deep. This tool will deeply aerate your soil, increase water percolation, and preserve soil structure. It is also an excellent tool for harvesting carrots, potatoes, garlic, onions, and the like. We offer 4 Tine, 5 Tine, and new 7 Tine broadforks.



LIFETIME GUARANTEE

Each Valley Oak Tool is guaranteed to be free from defects in material and workmanship for the life of the tool under normal wear and tear. This warranty does not cover expendable parts that can wear out from normal use: blades, grips, snap pins, rubber tires and their wheels.

Also, if you are not satisfied with the tool for any reason within six months of purchase, you can return it for a full refund.

www.ValleyOakTool.com

P.O. Box 301 Chico, CA 95927

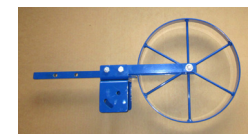
(530) 342-6188

How to Assemble Your Valley Oak Tool Co. Wheel Hoe



YOUR PACKAGE SHOULD CONTAIN:

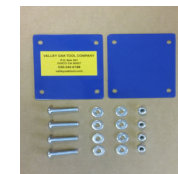
1 Steel Wheel or Rubber Tire
Chassis Assembly



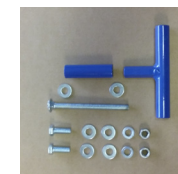
2 Steel Handles with Rubber Grips



Bag 1: Handles Hardware
2 Handle Plates (front & back)
4 Machine Screws
4 Nuts
8 Washers
Assembly Photo



Bag 2: Height Adjustment Hardware
1 T-Handle
1 Blue Yoke Tube
1 Long Bolt
2 Bolts 2 Nuts
6 Flat Washers 2 Lock Washers
Assembly Photo



Assemble Your Wheel Hoe in 3 Easy Steps

1 ATTACH THE HANDLE PLATES TO THE HANDLES

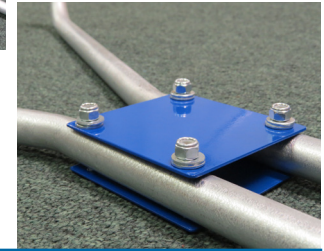
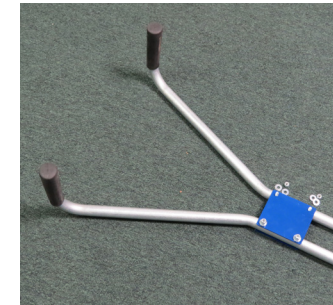
Slide the **4 Machine Screws** through the **Front Handle Plate** (the one with the Valley Oak Tool Company sticker). Slide the **2 Handles** onto the screws and place them on the floor with the Front Handle Plate face down and the handle grips facing upward.

Place the **Back Handle Plate** on the upper side. Use **2 Washers** on each machine screw and finger tighten the **4 Nylock Nuts** to connect the handle plates.

Tighten the handle plates to the handles with a Phillips head screwdriver and 7/16" wrench.

DO NOT OVER-TIGHTEN AND DISTORT THE HANDLES.

The washers are provided so that when tight, the machine screws are flush with the outside of the nuts but do not protrude past the nylock nuts. **The ends of the machine screws are very sharp!**

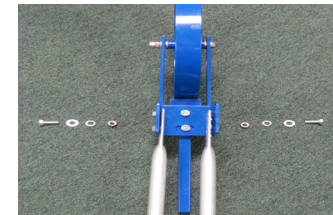


2 ATTACH THE HANDLE ASSEMBLY TO THE WHEEL CHASSIS ASSEMBLY

Connect the Handle Assembly to the Wheel Chassis Assembly with the **2 Bolts** (3/8"x1"), **2 Flat Washers**, **2 Lock Washers**, and **2 Nuts** found in **Bag 2**.

Put a **Flat Washer** on a **Bolt** and slide the bolt through the lower hole in the **Yoke** and the lower hole in the **Flange** of the handle. Slide a second flat washer on the bolt, then slide a **Lock Washer** and a **Nut** on the bolt inside the yoke.

Repeat on the other side. Tighten the 2 Bolts **snug but not brutally tight** with 2 wrenches.

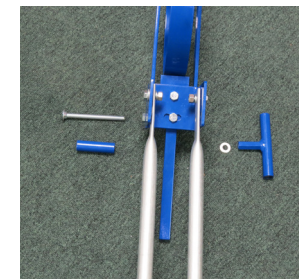


3 ATTACH THE T-HANDLE HEIGHT ADJUSTER

Slide the long bolt through the slotted hole in the **Yoke** and the upper hole in the **Flange** of the handle.

Place the **Blue Tube** between the flanges of the handles and slide the long bolt inside the tube. The bolt emerges through the other handle flange and the other slot. Use a Washer on one side of the blue tube if there is space between the handle flanges.

Slip a Washer on the bolt and screw on the **T-Handle**. The wheel hoe handles can be adjusted up or down to the most comfortable height. Tighten the T-Handle to lock the handles in position.



Watch the Wheel Hoe Assembly video at <http://www.valleyoaktool.com/wheel-hoe-assembly-instructions/>