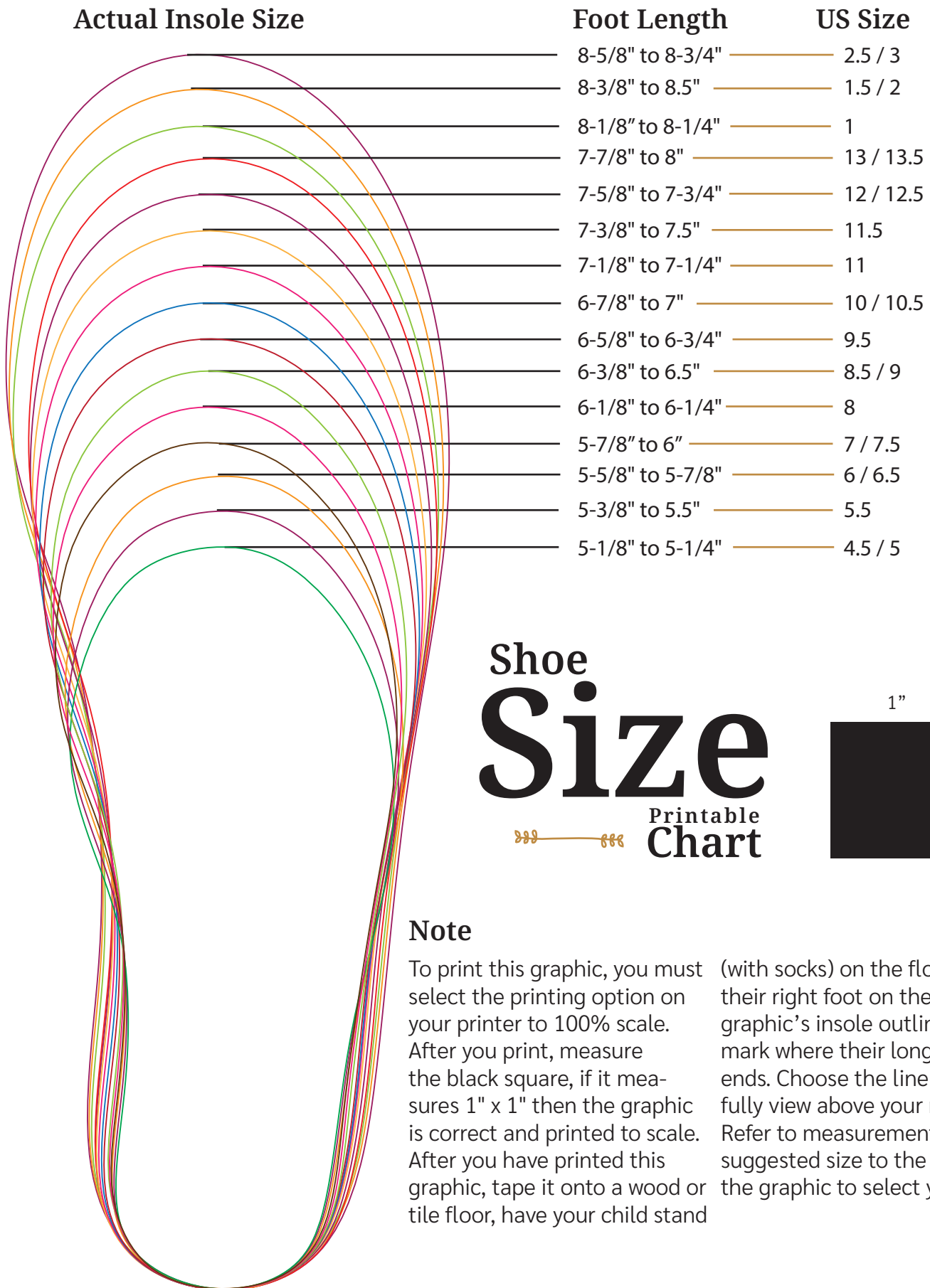


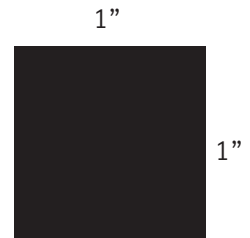
Insole Sizes to Fit Mary Janes, Oxfords, Chelsea Hawks, Camperas, Ranchos, Explorers & Bloom



Shoe Size

Size

Printable Chart



Note

To print this graphic, you must select the printing option on your printer to 100% scale. After you print, measure the black square, if it measures 1" x 1" then the graphic is correct and printed to scale. After you have printed this graphic, tape it onto a wood or tile floor, have your child stand (with socks) on the floor with their right foot on the graphic's insole outline and mark where their longest toe ends. Choose the line you can fully view above your mark. Refer to measurements and suggested size to the right of the graphic to select your size.