



# WALL STICKER APPLICATION

**PLEASE NOTE:**

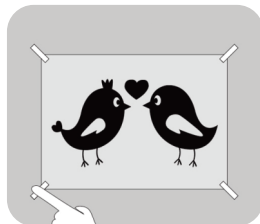
- Wall stickers cannot be stuck to newly painted walls.
- Please allow 4-6 weeks for the paint to fully cure.
- Please ensure the stickers are left flat for 48 hours to prevent them reverting back to its rolled state.
- If you have any questions or concerns, please do not hesitate to email us at [hello@ma-petite.co.za](mailto:hello@ma-petite.co.za).
- Ma Petite cannot be held responsible for application issues should the below instructions not be followed.

## USEFUL TOOLS



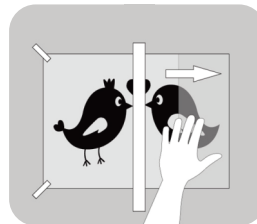
### PREPARATION

To ensure your sticker sticks, clean the surface with a clean, lint free cloth.



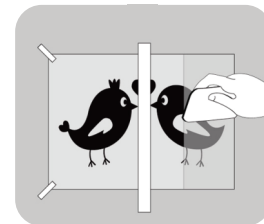
### POSITIONING

Before applying the sticker, work out the final position and secure with masking tape.



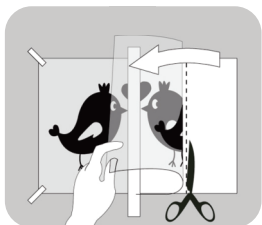
### HINGE

Place a piece of masking tape through the middle of the sticker. This ensures better handling during application



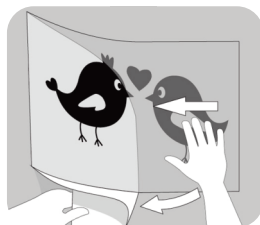
### SQUEEGY

Using a squeegee or credit card, press over the entire design in one direction several times to ensure the sticker is fully adhered to the application tape.



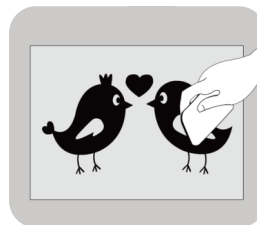
### PEEL

Lift the application tape from the backing. Peel back one side to the hinge keeping the sticker under tension and cut away backing



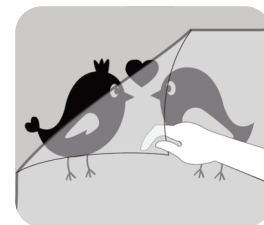
### APPLICATION 1

Gently lower the sticker to the wall from the hinge and begin to squeegee the sticker from the middle towards the outer edges.



### APPLICATION 2

Remove the hinge and peel the remaining backing from the sticker. Follow the previous step to apply the remaining section of the sticker.



### THE REVEAL

Carefully peel back the application tape from one corner, sliding it back across the sticker. If the sticker lifts, press it back, squeegee and peel.