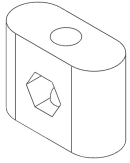


UNION WOOD CO

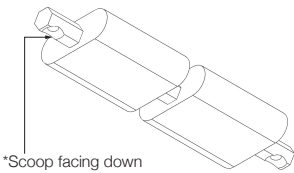
DOMINO CONNECTOR ASSEMBLY INSTRUCTIONS

For Tabletops and Other Components

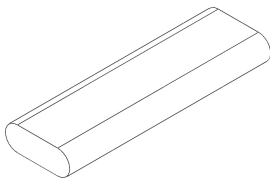
Tools Included



Cross Anchor



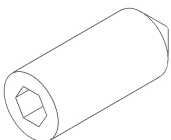
Domino Connector



Wooden Alignment Domino



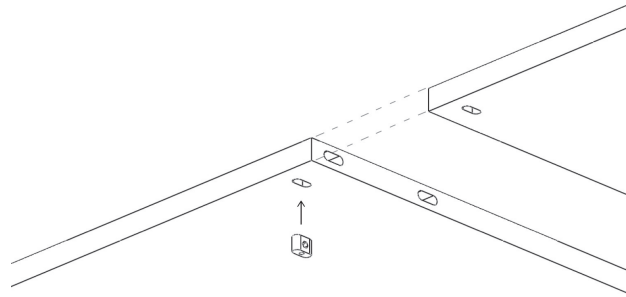
Allen Key



Set Screw

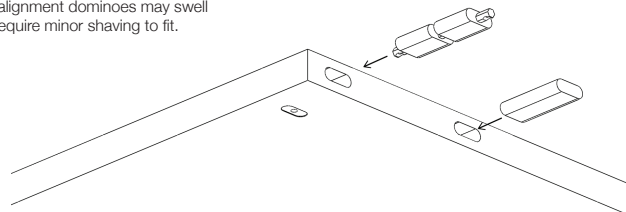
Assembly Instructions

Step 1 | Position tabletop or other components together on top of the leveled base(s). Never assemble on the ground and never lift, move, or carry an item once assembled. Insert cross anchor into opening located on the underside of the tabletop or component.

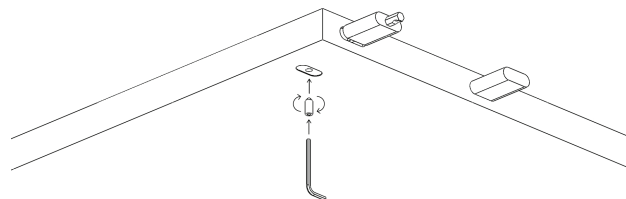


Step 2 | Insert domino connectors and wood alignment domino into the openings on one side of the item.

*Wooden alignment dominoes may swell and may require minor shaving to fit.



Step 3 | Using the Allen key, lightly screw the set screw into the cross anchor. Do not tighten yet.



Step 4 | Align the corresponding holes and while applying even pressure, push the parts together until the domino connectors reach the cross anchors. When pushed together, use the Allen key to tighten the set screws. This will draw both components together for a minimal seam.

*Set screws will draw both ends flush together on final tightening adjustment.

