

# Point Two

advanced protection for equestrians

## User Guide





POINT

TWO™

AIR VESTS

Supplier to  
**10 Nations**  
at the Rio  
Olympics

# Point Two

## Air Jacket User Guide



To get the most out of your Point Two jacket, read this manual carefully.

Products covered by this information:

**Point Two ProAir2 Adult/Child**

**Point Two Hunter Vest (Zipper Style)**

**Point Two Soft Shell Gilet/Vest**

**Point Two P2-RS Level 3 and Jockey Hybrid**

Point Two's inflatable body protector features the proven Point Two advanced inflatable airbag system to produce truly innovative and superior levels of protection for horse riders.

### Contents

1. Fitting/Location and Adjustment .....	4
2. Sizing.....	5
3. Material Content and Cleaning.....	6
4. Storage.....	7
5. Maintenance .....	8
6. Point Two Airbag System .....	9
7. Resetting the Trigger .....	11
8. Replacing the CO <sub>2</sub> Cartridge.....	11
9. Use with other Personal Protective Equipment.....	13
10. Disclaimer.....	13
11. Warranty .....	14
12. Servicing .....	15
13. Full Product Line .....	16
14. Accessories .....	17

## 1. Fitting

---

To benefit from the protection offered by your Point Two, please ensure that it covers the areas that it is designed to protect, that no discomfort is caused by the garment when you are in a riding position and that you are able to maintain a full range of movements. When correctly worn and inflated, the Point Two should cover the following areas of the body:

- The bottom edge should be not less than 25mm below the ribcage anteriorly, and should reach the pelvis laterally
- Posteriorly, the edge should be not less than 15cm below the level of the top of the pelvis on an average adult
- The top of the back of the protector should just reach the level of the seventh cervical vertebra (the prominent bone at the base of the neck)
- The front of the protector should reach the top of the sternum
- The body protector should cover the lateral 75% of the collar-bone

### **Location and Adjustment : ProAir2, Hunter and Soft Shell**

Remove any pointed objects such as pens, pins, glasses and mobile phones from your clothing before putting on the Point Two vest.

Unfasten the buckles or main zip and put on the Point Two vest. Put your hands inside the side opening and, turning them sideways so your hand is at 90 degrees to your body, you can easily run your hand from your chest to the bottom of the jacket without experiencing any tight spots, ensuring that there is at least a 7.5 cm/3" gap between your body and the lining of the vest. On the ProAir2, if necessary use the buckle and Velcro fastened straps, to adjust the fit. The Hunter features a zip front and elasticated sides.

### **WARNING**

**It is important that the ProAir2 vest is not fastened snugly to the body, as the airbags require space in which to inflate. If, when inflated, the ProAir2 vest is too snug, it may be necessary to adjust the straps or try a larger size in the case of the Hunter.**

### **Location and Adjustment : P2-RS Hybrid and Jockey Hybrid**

Remove any pointed objects such as pens, pins, glasses and mobile phones from your clothing before putting on the P2-RS.

Unfasten the main zip and put on the body protector. Close the body protector at the sides using the lace fastenings to achieve a snug, close fit. There should be no gaps between the front and back of the body protector. A physical restraint prevents this. The laces should be securely tied off.

**If, despite following the above instructions, you are unable to obtain a comfortable, secure fit, an alternative size may be required. Consult the retailer if in any doubt.**



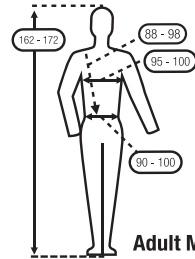
## 2. Sizing

Take measurements according to the pictogram (see right - size Adult Medium depicted) and select the appropriate size from the size chart. Note: Children under 70 lbs should NOT wear the Point Two air vest, as it takes 70 lbs of force for the lanyard to detach from the vest. The products described in this technical file are available in the following sizes:

### ProAir2 sizing chart

Size	Height	Chest	Waist	Waist-to-waist over shoulder
(Child S)	130-140	75-85	70-80	64-74
(CM)	138-148	80-90	75-85	70-80
(CL)	146-156	85-95	80-90	76-86
Child XL/ Adult XS	150-160	88-98	82-92	78-88
(Adult S)	154-164	90-100	85-95	82-92
(AM)	162-172	95-105	90-100	88-98
(AL)	170-180	100-110	95-105	94-104
(AXL)	178-188	105-115	100-110	100-110
(AXXL)	185-195	110-120	105-115	105-115

measurements shown in cm



### Hunter & Soft Shell

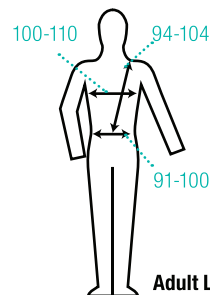
Size	Height	Chest	Waist	Waist-to-waist over shoulder
CXL	146-156	85-95	80-90	76-86
Adult S	150-160	85-95	80-90	80-90
Adult M	158-172	90-100	85-95	85-95
Adult L	166-176	95-105	90-100	90-100
Adult XL	174-184	100-110	95-105	95-105

measurements shown in cm

### P2-RS

Size	Chest	Waist	Waist-to-waist over shoulder
Child XL	76.5- 83.5	72- 77	75- 83
Adult XS	80-88	73- 80	84- 93
Adult S	83.5- 91.5	77- 84	84- 93
Adult M	91.5- 101	84- 91	84- 93
Adult L	100- 110	91- 100	94- 104
Adult XL	110- 120	101- 110	94- 104

measurements shown in cm



\* Also Available in Shortback: Child XL 2.5cm Shorter, Adult P2-RS 4cm Shorter

## Jockey Hybrid

Size	Chest	Waist	Waist-to-waist over shoulder	Std. Back
Flat	77-87	67-77	75-85	53.5
National Hunt	84-93	74-83	85-95	58
Point to Point	92-101	82-91	85-95	59.5

measurements shown in cm

### 3. Material Content and Cleaning

#### ProAir2 & Hunter:

Outer cover: 100% Polyester. Lining: 100% Polyester. Wipe clean with lukewarm water only and place on a hanger in a well-ventilated space to dry. Do not machine wash, use bleach, tumble dry or iron.



The materials from which this body protector is manufactured are not known to cause allergic reactions generally.

#### P2-RS & Jockey Hybrid:

Outer cover: 96% Polyester/4% Spandex. Lining: 80% Polyamide/20% Elastane. Impact foam: PVC Nitrile. Wipe clean with lukewarm water only and place on a hanger in a well-ventilated space to dry. Do not machine wash, use bleach, tumble dry or iron.



**WARNING:** The foam in your body protector is sensitive to extreme temperatures, which may reduce its protective properties. Any alteration, incorrect cleaning or misuse may also be detrimental to the protective performance of your body protector.

#### Special instructions for laundering the Point Two Soft Shell body protector with removable outer.

The outer jacket of this Soft Shell model can be removed for washing (the inner layer, which contains the airbags and trigger, cannot be laundered).

**Separating the inner and outer layers:**

- Open the large zip opening on the right side of the body of the outer jacket.
- Remove the CO2 canister from the trigger body.
- Carefully pull the lanyard attachment through the keyhole opening of the outer jacket.
- Unfasten the four zips which are located around both armholes, across the back waist and around the body.
- Separate the two halves of Velcro that attach each side of the trigger body to the back face of the outer jacket.
- Pull the trigger body back through the square opening in the outer jacket.
- The inner layer and outer jacket are now separated.

**Washing Instructions:**

- Ensure all pocket zips are closed before washing.
- Gentle/delicate wash at 30 C. Line dry. Do not bleach. Do not tumble dry. Do not iron. Do not dry clean.



- The inner layer, which contains the airbag system, cannot be laundered. Wipe clean with a damp cloth only and place on a clothes hanger to dry in a well-ventilated area, away from sources of direct heat and sunlight.

**Reassembly**

- To reassemble the Soft Shell, first match up the inner layer and outer jacket.
- Open the large zip opening on the right side of the body of the outer jacket.
- Insert the trigger body through the aperture to the back of the outer jacket pocket and carefully reattach the two halves of Velcro that attach each side of the trigger body to the back face of the outer jacket, taking care to ensure a secure fit.
- Insert the lanyard attachment through the keyhole opening in the outer jacket.
- Refasten the four zips to join the inner layer and outer jacket.
- Fit the CO2 cartridge to the trigger, ensuring it is correctly locked in position, and refasten the pocket zip.
- Your Soft Shell is now ready for use.

**4. Storage**

Place on a clothes-hanger, and store in a dry, well-ventilated environment away from direct sunlight and extremes of temperature. Do not place heavy objects on top of the garment, as these may cause damage to the airbag system. Do not sew or stick anything onto the body protector as it could pierce the airbags and prevent them from working properly.

**IMPORTANT**

Any failure to comply with these instructions and precautions, as well as any additional instructions and precautions provided in the manual, may result in serious injury or death.

## 5. Maintenance

---

Frequent visual inspection should be made for signs of obvious wear, especially after any accident. In particular, check all areas are in good condition where the airbag system is present, i.e. no rips or tears, before each use. If you suspect the airbag may be damaged, reset the trigger, fit a new cylinder and pull the lanyard to inflate the airbag. If it does not inflate correctly, exhibits reduced pressure, or deflates more rapidly than usual, return your air jacket to Point Two for professional inspection and repair. The garment should be replaced if in any doubt. Cleaned and maintained in accordance with these instructions, the service life of the body protector in normal conditions should be up to three years.

### IMPORTANT

**Send your jacket in for a service annually, after six inflations or after a particularly heavy fall. We will replace the airbag and wash your vest. See Servicing section for more details. Register your jacket for extra protection. Servicing by anyone other than Point Two engineers will void the lifetime warranty of your airbag and trigger system.**

### Special Instructions for the Point Two Airbag System

#### IMPORTANT

**Please read these special instructions carefully in order to ensure optimum protection is provided by the Point Two airbag system, which is designed to keep the spinal column supported and absorb shock. Failure to follow the instruction could lead to your body protector malfunctioning or reduce its effectiveness.**

The Point Two is worn like any other conventional air vest when horse riding. The wearer attaches a lanyard to the ring of the adjustable saddle attachment, which they have fitted securely to the saddle and, when they fall or are thrown from their horse, the lanyard linking them to the saddle tightens and forces out the release pin from the trigger body, which in turn allows a spring to push the piston into the neck of the CO<sub>2</sub> cartridge. The CO<sub>2</sub> is then discharged into the airbag until it reaches full inflation. Peak inflation is maintained for between 10 and 15 seconds, after which the CO<sub>2</sub> begins to automatically discharge through a decompression outlet in the trigger body.

Point Two requires its retailers to provide every purchaser of a Point Two body protector with the opportunity to experience a test inflation of their new garment. It is highly recommended that you take advantage of this, as you will then know what to expect when the system is activated in response to a real incident and how the body protector feels when inflated. You may experience a feeling of slight restriction for a few seconds, but as the gas is released, the pressure gradually decreases. Most wearers do not find this troublesome, particularly if they have experienced the test inflation, and those who still feel particularly restricted can release the front fastening in order to ease the pressure, which we recommend is also done as part of the test inflation process. The test inflation experience is also an opportunity for the retailer to demonstrate and talk you through how to reset the airbag system. This is also covered in detail later in this information.

## 6. Point Two Airbag System

### 1 The Airbags

The airbags are made of high-quality resistant polyurethane sheaths, which provide the best possible shock absorption. It is possible for the airbags to be ripped or damaged in an accident if they hit any pointed or sharp objects.

**CAUTION** The sheaths must not be exposed to temperatures above 50°C/122°F.

### 2 The Release Pin

A force, applied to the connecting lanyard, is required to pull the release pin from the trigger body. This releases a spring which forces a needle to perforate the CO<sub>2</sub> canister, releasing the gas into the airbags. A pull from any direction will detach the release pin from the trigger body.

### WARNING

For your own safety, do not dismantle the release pin or remove any parts.

### 3 The Gas Cartridge (CO<sub>2</sub>)

When replacing the gas cartridge, use only a genuine Point Two part of the correct size. The capacity of CO<sub>2</sub> is stamped on the canister on the CO<sub>2</sub> line. Replacement gas (CO<sub>2</sub>) cartridges can be obtained from Point Two. Please call 888.729.4442.

Children's L and XL ProAir and all Adult Sizes	Children's SM and M ProAir and Children's XL P2RS
Type: co2	Type: co2
Canister volume: 60cc	Canister volume: 50cc
Weight: 189g (Bayonet) +/- 3g 185g (Screw) +/- 3g	Weight: 156g (Bayonet) +/- 3g 152g (Screw) +/- 3g
Container: cast steel; welded tap	Container: cast steel; welded tap
Reference: LS-6013-ew-Cn3L-45	Reference: LS-5116-EW-Cn4R-HLT

### IMPORTANT

- The cartridge should be stored and used in temperatures below 45°C /113°F.
- The cartridge must be used at a temperature over 0°C/32°F. If stored under 0°C /32°F, warm up before use or replace with a cartridge which has been warmed in an indoor environment.
- Do not expose full cartridges to naked flames.
- Do not leave full cartridges in the car in high temperatures.
- If rust or other corrosive marks appear on the outer surface of the cartridge, change it immediately and dispose of the corroded cartridge in a safe and environmentally-friendly manner.
- Ensure that a spent cartridge is completely empty before removing it from the trigger system.
- Only install genuine Point Two gas cartridges of the same size sold with the Point Two body protector.
- Please ensure spare CO<sub>2</sub> cartridges are kept out of children's reach at all times.
- Do not remove any part of the Point Two trigger system
- The CO<sub>2</sub> cartridge is not re-usable. Once used, it must be replaced with a fresh cartridge of the same capacity.
- Check the weight of the cartridge yearly. It should not differ by more than 3g from the weight on the chart above.



#### 4 The Adjustable Saddle Attachment

Attaching the adjustable saddle attachment:

- Remove both stirrups leathers from the saddle.
- Standing at the pommel of the saddle, thread one end of the attachment through the 'D' ring and then slide the loop over the stirrup bar.
- Repeat the process with the other end of the strap on the opposite side. It may be necessary to loosen the straps to reach the other stirrup bar at this point.
- Now adjust the strap evenly on both sides so the attaching ring sits at the centre of the pommel.
- The strap should be short enough to not exceed passing behind the pommel but not so tight it lies flat on the horse's wither.
- Replace the stirrup leathers ensuring they are securely on.

#### CAUTION

**Make sure that the lanyard cannot wrap itself around any part of the saddle when riding. Shorten it accordingly and check that it does not restrict the rider's movements and that the chosen fixing point is sturdy enough.**

#### 5 Attaching the Lanyard to the Attachment

The lanyard has a clip at the end, which simply clips onto the central ring of the adjustable attachment on the saddle. The lanyard must be securely clipped on to the ring otherwise your vest will not inflate in the event of a fall.

Considerable force (70 lbs) is required to activate the trigger mechanism, so the Point Two airbag system should not be activated during normal use. Should the lanyard linking the saddle to the release pin catch on any obstruction, accidental activation could occur. If the horse falls and the rider stays in the saddle, the Point Two airbag system cannot be activated until the activation distance (full stretch of the lanyard) and activation force are both reached.

Always detach the lanyard from the saddle before dismounting to avoid accidentally inflating the airbag system. Forgetting to unfasten the lanyard before dismounting when the lanyard is too long or not enough force is exerted will mean the wearer will still be attached to the saddle if the horse gallops off. If this happens, push back forcefully to trigger the airbag system, which will also disconnect the lanyard.

#### 6 Precautions after Activation

Pay attention to the following points when the airbag is inflated:

- Make sure you are out of danger before removing the Point Two body protector.
- The airbag will remain inflated for 15 – 20 seconds. The gas will then escape gradually through the decompression outlet in the trigger body.
- If the cushions are punctured when the airbag is inflated, all the chambers will empty and the jacket will deflate.
- Do not block the decompression valve, which is located within the trigger body.
- If any external damage to the body protector is caused during deployment, contact Point Two on 888.729.4442 for servicing and replacement of the cartridge.
- In the event of serious damage to either the interior or exterior of the body protector, it may not be possible to repair it.

## 7. Resetting the Trigger

**INSTRUCTIONAL VIDEO AVAILABLE AT [www.pointtwousa.com](http://www.pointtwousa.com).**

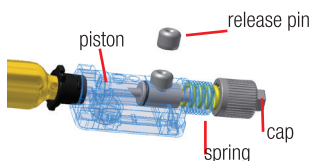
If after reading the following instructions you remain unsure of the correct procedure to reset your Point Two's airbag system, we recommend you take it to an authorised dealer for resetting and a further demonstration of how you can reset the system yourself. The Point Two body protector can be reused if it is reset according to the following procedure, but if it is not reset correctly there could be a malfunction. Using the Point Two body protector without a correctly set airbag trigger system could deprive the wearer of the protection provided by the airbags.

### IMPORTANT

**These steps must be followed in sequence before removing a spent cartridge to avoid damaging the release pin. We recommend that an adult resets the jacket after activation or contact 888.729.4442 for advice.**



**A** This is how the trigger looks after activation. The release pin and lanyard have detached, the piston has slid towards the cartridge and the spring (marked with a yellow arrow) is visible.



**B** Unlock the empty cartridge by applying slight downward pressure and turning it anticlockwise to the right in the trigger body.



**C** When the retention lug on the bayonet fitting reaches the right hand side of the location slot (shown by the yellow arrow in the picture), you will feel the cartridge loosen in the trigger body.

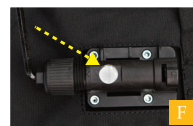


**D** Remove the empty CO<sub>2</sub> cartridge upwards away from the trigger body.

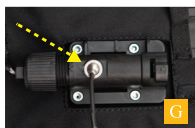
## 8. Replacing the CO<sub>2</sub> Cartridge



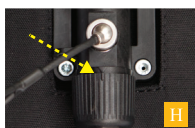
**E** Loosen the spring tension cap with the Allen key provided, turning it in the direction shown by the arrow, until the spring drops out of sight below the bottom of the release pin aperture of the trigger body.



**F** With your finger or with the allen key, push through the trigger aperture to move the piston back to its location. Ensure the recess of the silver piston is aligned with the hole in the centre of the trigger casing - as pictured.



**G** Insert the release pin into the aperture, making sure it is fully pushed into the recess in the piston. Hold it in place with one hand and begin tightening the spring tension cap with the other hand.



**H** Finish tightening the cap with the Allen key, until the lip of the spring tension cap is flush with the trigger body and the markers on the trigger body and spring tension cap line up as shown by the yellow arrow.

### IMPORTANT

Please pay particular attention to the following points when reassembling the trigger system of your Point Two body protector:

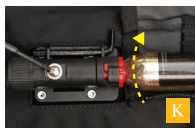
- Check for visible external damage (holes, rips, etc.) in the fabric of the outer garment and the airbags (if visible);
- Ensure that the airbags have completely deflated;
- Always ensure the replacement cartridge is a genuine, approved Point Two part of the correct size, which is 60cc for adult sizes and Child Large ProAir and 50cc for Child Small and Medium ProAir and CXL P2-RS and Jockey Hybrid.



**I** To insert a new CO<sub>2</sub> cartridge; first ensure it has the correct bayonet fitting. It is not possible to use screw-fitting cartridges in the Point Two bayonet trigger system. Line up the location lug on the bayonet fitting (highlighted by the top arrow in the picture) with the slot on the trigger body (highlighted by the bottom arrow in the picture).



**J** Insert the CO<sub>2</sub> cartridge into the trigger body. If you encounter resistance, ensure you have correctly aligned the location lug on the bayonet fitting with the insertion slot on the trigger body.



**K** Using light downward pressure, twist the CO<sub>2</sub> cartridge clockwise to the left, as shown by the direction of the top yellow arrow in the picture, until the location lug on the bayonet fitting is in the left side of the location slot.



**L** Provides a close up of the correct final position for the location lug in the trigger body location slot.



**M** Close the zip on the CO<sub>2</sub> cartridge cover.

## CONCLUSION

Check again to ensure accurate reassembly of the airbag trigger system bearing in mind your own safety. Any exterior or interior damage could cause a malfunction.

Thoroughly following these instructions will ensure your Point Two body protectors' airbag system is properly reset. If, however, you remain unsure about the resetting procedure, or are not confident of your understanding of these instructions, please visit the Point Two website to view the instructional video, or for one-to-one assistance, speak with the supplying retailer, or contact Point Two direct.

## 9. Use with other Personal Protective Equipment

Body protectors are part of the protective equipment ensemble available for use by horse riders, and are intended to be used with a safety helmet meeting an appropriate standard, with fitted or separate eye protection where there is a risk of eye injuries.

Where this body protector features attachment points for fitment of shoulder protectors, it is strongly recommended that where these are worn, they are also type approved and CE marked in accordance with the requirements of EN 13158:2009, or other documents of equal status.

For added protection, the ProAir can be worn over an EN 13158 body protector.

## 10. Disclaimer

- Please note, no body protector can prevent death or serious injury in certain accidents.
- Point Two USA, LLC will be held in no way responsible for any bodily injury or death, and/or property damage that may occur whilst using any Point Two product.
- Point Two accepts no responsibility or liability for any improper installation and usage of any of its products.
- All Point Two air vests are rigorously tested before being sold. Each vest is inflated before dispatch, however we cannot guarantee the vest will inflate every time or be held responsible should it not.
- Point Two requires that all vests are serviced annually, after every 6 inflations, a particularly heavy fall, or a fall into water.
- The Point Two vest protects only when inflated.
- Any modification or misuse could lead to malfunction.
- No garment or backpack should be used over the Point Two vest.
- Currently little data exists on the use of air vests by pregnant women. However, we suggest that the Point Two air vest is not worn beyond 18 weeks pregnancy to avoid the theoretical risk of spontaneous miscarriage / preterm labour, amniotic fluid embolisation, abruptoplacenta and isoimmunization.
- Children under 70 lbs should not wear the Point Two air vest, as it takes 70 lbs of force for the lanyard to detach from the vest.

## IMPORTANT

Point Two Air Vests USA, LLC and their respective parent companies, subsidiaries, members, owners, officers, directors, employees, independent contractors, affiliates, and assigns, are collectively referred to in this Notice, Disclaimer and Warning as "Point Two").

All equestrian sports are inherently dangerous and involve the risk of serious injury or death. Riders using Point Two products ride at their own risk with full knowledge of the hazards and risks associated with their activities. Point Two air vests, and their attachments and associated products, are designed for equestrian use only. Point Two products cannot offer complete protection from injury or death to riders in case of fall, collision, impact, loss of control or otherwise. Point Two products cannot protect areas of the

body that are not covered. Point Two products offer no protection against injuries involving forces other than impact.

Notice: Point Two products must fit properly and the connecting lanyard must be attached for the air bag to properly deploy in the event of a fall. Point Two air vests that suffer an impact should be examined and, if necessary, serviced by Point Two. The protective qualities of the Point Two air vest may be compromised by prior impact, use, and many common substances. Always follow the manufacturer's recommendations before applying cleaning agents, adhesives, or any other object to the Point Two air vest.

Point Two disclaims any responsibility for injuries or death incurred while wearing any of the Point Two products. Representations regarding testing results, equipment ratings, product specifications, and the adequacy of all such standards and designations are made solely by Point Two and therefore Point Two does not warrant or confirm the representations of any other distributor, sales representative, retailer, or any other person or entity. Point Two does not guarantee the deployment of the Point Two air vest in all falls, impacts, or other incidents. By purchasing any of the Point Two products offered for sale and using it in an equestrian sport, the purchaser and user agree freely and voluntarily to assume all risks related to equestrian sports including the risk of personal injury, damage, death or property damage. Further, to the maximum extent permitted by law, the purchaser and user releases Point Two from any and all responsibility or legal liability related to purchaser's and user's participation in equestrian sports.

## **11. Warranty**

---

Point Two requires that all vests are serviced once a year, after six inflations or after a particularly heavy fall. Servicing includes trigger clean, shell wash and new airbag.

All Point Two air vests come with a lifetime warranty on the air bag component. The warranty is subject to the vest being serviced annually by Point Two and if any reduction in the airbag performance is detected during inflation, the airbag will be replaced FOC for the customer.



# Point Two Servicing



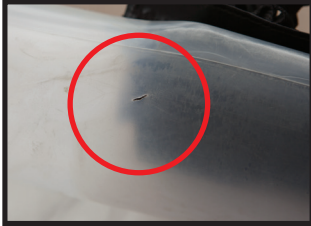
Look after your Point Two and your Point Two will look after you. We ask that you send your vest in for a service annually, after six inflations, or after a particularly heavy fall. We remove the air bag and wash your vest. We replace the old airbag with a new one and then test it to verify the integrity.

## General Service

### General Service + Colour Swap

Point Two will remove the air bag and supply the vest with a new one. We will also wash your shell and give you the option to change it for another colour, or in the case of the Child's ProAir, a larger size. We do our utmost to ensure that your air jacket is as reliable as the first day you bought it.

**Air Bag Before Servicing**



**New Air Bag After Servicing**



## Shipping Charges

Mail vest to our address listed below. We require only the vest and lanyard for servicing. Do not send canisters or saddle strap.

Please fill out the Service Form (located on our website) and include it with your vest. We will contact you with any questions and to get your payment information.

Point Two Air Vests USA  
3141 Fortune Way, STE 4  
Wellington, FL 33414

# Point Two Full Product Line



ProAir



ProAir Child's



Hunter



Soft Shell



P2-RS Hybrid



Jockey Hybrid

# Point Two Accessories



**Saddle Attachment**



**Bungee Lanyard**



**P2-RS Hybrid Covers-** Made in lycra to fit comfortably and elegantly in your own design and colours. Transform your P2-RS with eye catching and unique designs. The cover fits snugly over the P2-RS with a zip at the front and a hole to button feed the lanyard through. Personalize your cross country colours. Easily interchangeable to refresh your image. Hard wearing and machine washable.  
**Available in solid colours. For custom colours contact Point Two for quote.**



**Replacement CO<sub>2</sub>  
Canister**



**Back Pad Insert**







Point Two Air Vests are assembled and serviced in the US:

**Point Two Air Vests USA, LLC**


3141 Fortune Way, STE 4

Wellington, FL 33414

Tel: 888.729.4442

Email: [info@pointtwousa.com](mailto:info@pointtwousa.com)

[www.pointtwousa.com](http://www.pointtwousa.com)



**Any failure to comply with these instructions and precautions, as well as any additional instructions and precautions provided in the manual, may result in serious injury or death.**