

All-Band GNSS Survey Antenna

Champion AS1-FS GNSS Antenna

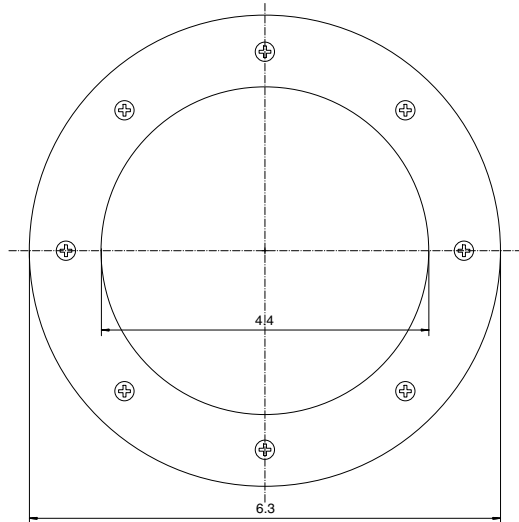
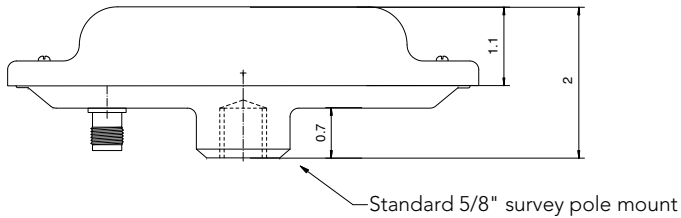


Champion AS1-FS GNSS Antenna



Champion
INSTRUMENTS

Champion AS1-FS GNSS Antenna



All-Band External GNSS Survey Antenna

PN #ATRF - SYA - AB8E - Rev. A

Application

▶ Ruggedized structure for applications as survey/construction/agriculture.

Specification

▶ Frequency: 1166 - 1280 MHz,
1559 - 1610 MHz for:

GPS: L1 C/A, L2E, L2C, L5

GLONASS: L1 C/A, L1 P, L2 C/A, L2 P

BeiDou: B1, B2, B3

SBAS: L1 C/A and QZSS L1

Galileo: E1, E5A, E5B

Polarization: RHCP

Axial Ratio: 1 dB Typ. 3 dB max

LNA

▶ Gain: 40 dB

▶ Noise Figure: < 2.0 dB

▶ Port VSWR: < 2.0 :1

▶ Voltage: 3.0 - 6.0 V DC

▶ Current Draw: < 65 mA

▶ ESD: 8 KV

Environment

▶ Operating Temperature: -40 °C - +85 °C

▶ Storage Temperature: -40 °C - +85 °C

▶ Humidity: 100%

▶ IP67 compliance

Physical

▶ Dimension: 6.3"(D) x 2"(H)
(161 mm diameter x 51 mm height)

▶ Weight: 500 g

▶ Radome: ABS UV resistant painting

▶ Connector: TNC - F

▶ Standard 5/8" survey pole mount

We will not let you fail.



eGPS Solutions
4317 Park Drive
Suite 104
Norcross, GA 30093

t: 770.695.3361
f: 770.695.0803
info@egps.net
www.egps.net

