

Marco ion ANTERIOR SEGMENT IMAGINGSM



Hardware	
Type	Intra-Optics Beam-Splitter/Adapter
Beam-Splitter	2-Position Lever; Down=100% to oculars; Up=70% to Camera/30% to oculars
Dimensions	7" x 2.5" x 6.5
Weight	4 lbs
Image Capture via	Bluetooth activated Foot-Switch or Joystick Button (Marco Slit Lamps only)
Camera*	Apple® iSight 8MP/1.5μ pixels (iPhone 6 Plus) or 12MP/1.22μ pixels (iPhone 6S Plus)
Display	Apple® Retina HD Display; 5.5-Inch Diagonal LED Backlit
Camera Resolution	1920 x 1080 Pixels at 401ppi
Video Resolution/FPS	1080p HD video recording (30 fps or 60 fps)
Contrast Ratio	1300/1
Processor	A8 (6 Plus) & A9 (6S Plus) chip with 64-bit architecture
Software	
Operating System*	Apple® iOS 9
Export To	Local Network; Cloud Storage & iOS/Photos
Capture Modes	Still image or HD Video
Security	HIPPA Compliant; Password Protected; AES Encryption
Imaging Technology*	Apple®'s HDR, Focus Pixel, Optical Image Stabilization technology
Networking*	Via Wi-Fi Connection
Included in the Box	ion Beam Splitter/Adapter, ion Imaging App, Bluetooth Control Unit, Power Adapter with 2-USB ports, 6' USB Cable, Footswitch with 10' Cable, 10' Lightning iPhone Charging Cable, 10 Adhesive Cable Tie Mounts, 14 4" Cable Ties, 2 1" x 1" Adhesive Velcro and 2 Vinyl Lens Covers

*Customer supplied items. Apple® is a trademark of Apple Inc.



All automated Marco technologies share data and integrate with leading EMR programs via Marco Connect software.



800.874.5274
www.marco.com



0153500 BR-ion





EMPOWERMENT **Delivering your diagnosis – as you make it**

Marco has redefined slit lamp imaging by combining a new intra-optics beam-splitter/camera adapter with the tremendous computing and imaging power of the latest Apple® Technology. Together they create a highly sophisticated “mainstream” imaging system that emphasizes image quality, simplicity and efficiency.

Imagine combining all of the bulky components (digital camera, adapter, computer, monitor, multiple cables, keyboard, mouse, etc.) of the traditional photo slit lamp, into one sleek, attractive all-in-one device, all at your fingertips, never having to leave your slit lamp. Its function allows us to respect and remain consistent with, the fundamental slit lamp examination process –without compromise or disruption. Introducing ‘ion Imaging’ from Marco.

intuitive

- The world’s best known and most user friendly OS
- Simple but powerful proprietary Slit Lamp Imaging App designed by Ophthalmic Photographers
- Touch, click or tap to capture high resolution video or still images
- Diagnose, image, integrate & educate in seconds
- Educate your patients using the latest technology (Apple® TV or Mirroring App)
- Update software via the App Store
- Ergonomic “All-in-One” design (eliminating bulky cables, PC, monitor, keyboard, mouse and software)
- Start the App and you’re ready to capture

optimized

- All controls at your fingertips in heads-up display
- App specifically designed for Anterior Segment Imaging with patient demographics
- Speed of acquisition, integration to network and education for patients
- Unique “intra-optics” beam-splitter/adapter/mount
- Accommodates most “parallel style” slit lamps
- Harnesses the power of Apple® with its exclusive HDR, “Focus Pixel” technology & more
- Enhanced clinical workflow by decreasing disruptions
- Respects the fundamental SL examination process – without compromise
- Sleek non-intrusive design

networked

- Imaging capability in every exam room
- Wirelessly display your images on your exam room monitors
- Images instantly available in NAVIS-EX or for uploading to your EHR or PACS
- Archive, view, and share images immediately in the Cloud
- Bluetooth foot control or joystick capture

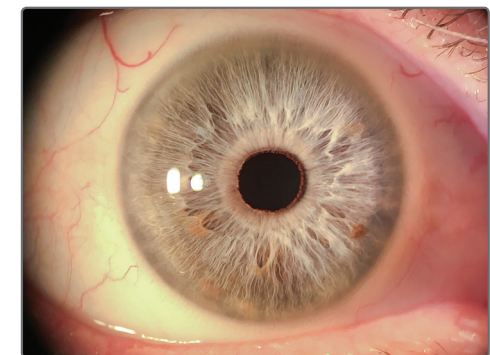
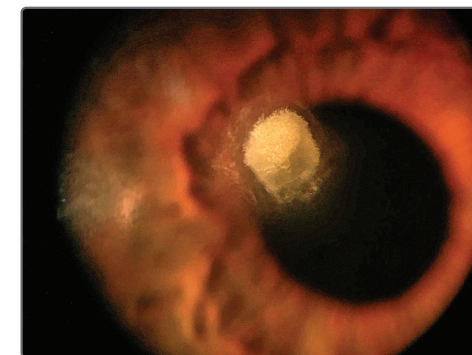
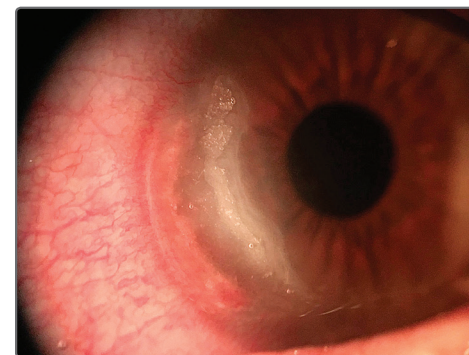
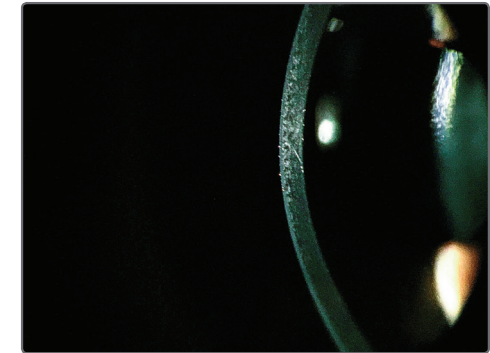
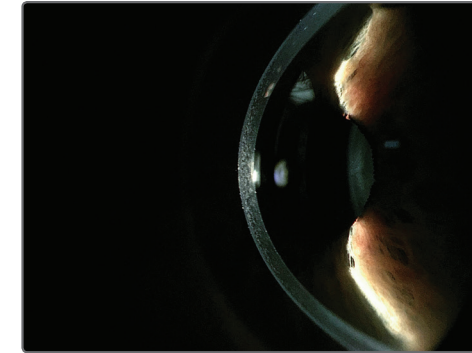
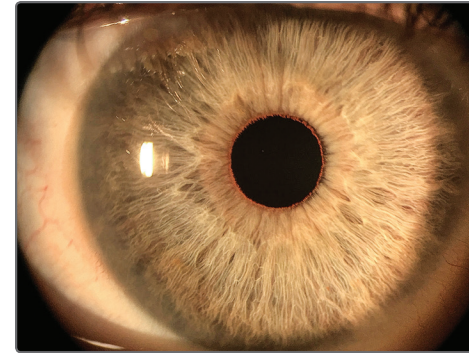
ion imaging

An App dedicated to Anterior Segment Imaging that includes: patient demographics, pre-set photography modes maximizing the various lighting techniques for video or still images, auto storage to the Cloud, local network for EMR or PACS integration.

A system that you will want in every exam room, not missing the opportunity to capture, integrate and educate every diagnosis.

NAVIS-EX

NAVIS-EX is a fully networked imaging management system with features that enhance the diagnostic utility of the ion images. NAVIS-EX allows seamless integration with most EMR vendors.



What Professionals are Saying:

“With the ion’s ease of use, image quality and all around thoughtfulness of design functionality I was able to quickly use this instrument as I found it to be efficient and intuitive. Each button is well thought out and placed for maximum utility within the design.

I was able to quickly create outstanding anterior segment images with the **ion** imaging system.

Due to it’s portability and affordability I can definitely see the usefulness of this system within practices, multi-office/multi-specialty facilities, teaching institutions, and for remote access utilizing a telemedicine system.”

Denice Barsness, CRA, COMT, ROUB, CDOS, FOPS
CPMC Department of Ophthalmology