

# Vantage *Plus*

The best just gets better

**NEW**

## LED illumination

Longest life • Brightest • Better detail

## Slimline Polymer battery

Longest life • Lightest • Better comfort

## New Standard Combined

Longest life • Lightest • Brightest • Better detail and comfort



**Keeler**

# NEW Vantage Plus LED

Bright white illumination for a superior retinal view

We are delighted to present the new, exclusive Vantage Plus LED.

The LED cooler color temperature provides brighter illumination, longer battery life, and freedom from purchasing bulbs. The LED life expectancy is up to 10,000 hours.

Clinically, the superior optics combined with the LED illumination could provide greater detail, allowing you to find retinal pathology that was not visible with the xenon bulb BIO's.



New Slimline Lithium Polymer battery  
(paper clip shows scale)

Our new Slimline Lithium Polymer is as light and as small as the new mini ipod™.



Longest life, brightest, better detail



30% brighter than standard bulbs



New Slimline Lithium Polymer battery weighs less than 2 ounces



Combined LED and Lithium Polymer battery can provide up to 6 hours of use on a single charge

"The cooler color temperature of the LED light source resulted in a level of image clarity that I've not found in another BIO"

"I have been able to find retinal pathology that was not visible with the xenon bulb BIOs in our clinic."

Todd J. Purkiss, M.D., Ph.D., Chief Resident, Ophthalmology & Visual Sciences, University of Louisville

## Unique - Intelligent Optical System (IOS)

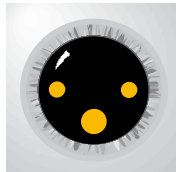
(Patent pending)

**At last - now when you change the aperture the optics and mirrors automatically adjust for you, without the need to flip another lever!**

Keeler has designed this unique one step movement to make your examinations easier and faster. The (IOS) mechanism (patent pending) means that when you select the small, medium or large aperture the optics automatically adjust, providing 3 dimensional stereoscopic views of the retina through all pupil sizes.

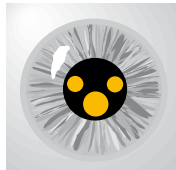
### Large Pupil

When looking through a large fully dilated pupil the optics are separated and the light source remains in the upper position, achieving maximum stereopsis.



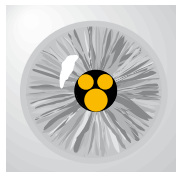
### Intermediate Pupil

The viewing optics and light sources are in a 'mid position' for maximum stereopsis.

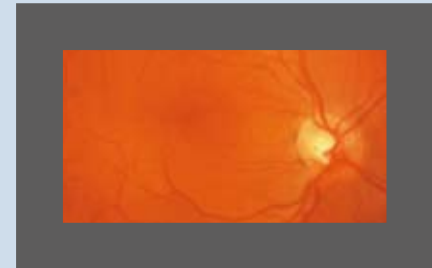


### Small Pupil

When looking through a small pupil the viewing optics and light source are converged to allow you to view the retina through the smallest pupils stereoscopically.



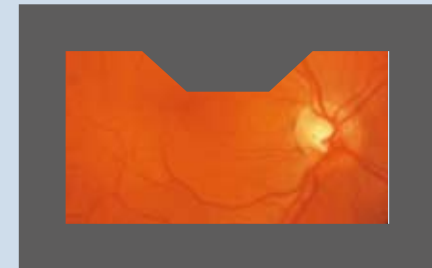
## Exclusive - IOS Optics allows Small Pupil Imaging without any obstructions



### Vantage Plus IOS Optics

View through Vantage Plus with IOS Optics.

When small pupil is selected there is no obstruction of the retina.



### Non IOS Optic System

View through NON IOS Optical Systems.

When small pupil is selected there is an obstruction, reducing your clinical information.

## Quality and efficiency

The redesigned optics combined with the new LED or Xenon light source offer brighter high definition retinal images - PLUS you get more life from whichever Keeler battery (Metal Hydride or Lithium) you use.

## 15% lighter

The Vantage Plus uses advanced textured engineering materials, providing a lighter, smaller and more compact instrument without compromising the renowned Keeler reputation for robustness, reliability and quality.



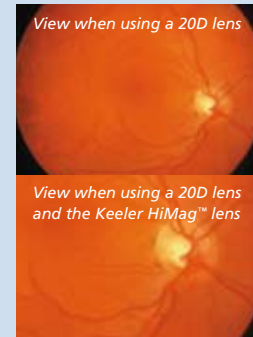
## Comfortable and perfectly balanced

A new soft cushioned headband has been designed to maximise comfort, it adjusts and balances perfectly to suit all head shapes and sizes.

## Unique - The new HiMag™ (patented) lens just slides on and off with ease

This unique feature is only offered with the Vantage Plus indirect. It gives you a 1.6X additional magnification than with a condensing lens alone, providing superb stereoscopic images.

Scratch resistant coated optics guarantee high quality images at all times and HiMag™ can be simply flipped out of view when not required.





### New high contrast optics

The new compact and high contrast viewing optics use LED or Xenon illumination that gives you brilliantly crisp, glare free, superior views of the retina every time.



Brighter

### Filters and Apertures

IR/UV filters are built into the optics of the Vantage Plus with optional filters and a choice of 3 apertures plus a soft light diffuser.

P D Range: 52 - 76mm



### The new teaching mirror just slides on and off with ease

The new teaching mirror just slides on and off with ease allowing two observers to view the retina at the same time.

### New slim professional carrying case!

Transport your instrument in style and choose if you want to use your wheels or carry it on your shoulder.



“I found the LED beam clear, bright and consistent and examining adults and children was a pleasure”

“Overall it is the best binocular indirect ophthalmoscope I have ever used”

*Mr J McAllister FRCS, FRCOph, Consultant Ophthalmic Surgeon, Windsor*



# Power Supply Options

## Wireless

Keeler wireless technology allows you to move from room to room without any constraints. The chargers are either desktop or wall mountable, and store an extra lithium battery as a back up, should you need it.

## Never run out of power

Keeler wireless system comes standard with two lithium batteries; and they last so long, it may take months before you need to charge them again. You now can choose which battery suits your needs.

## New Slimline Lithium Polymer Battery

The New Slimline Lithium Polymer battery can give you up to 6 hours of use, weighs less than 2 ounces, and is nearly 70% lighter than the standard battery. It is also much smaller and can fit nicely into the palm of your hand.



Lighter



Long lasting



*New Slimline Lithium Polymer Battery (paper clip shows scale)*

## Standard Lithium Battery

Our original lithium battery lasts up to 11 hours of use and fits neatly into the charging unit.



Long lasting



*Standard Lithium Battery*



*New Slimline Lithium Polymer Battery*



*Standard Lithium Battery*

**"I used the Plus almost daily for four months before I had to recharge the battery"**

*Todd J. Purkiss, M.D., Ph.D., Chief Resident, Ophthalmology & Visual Sciences, University of Louisville*

## New Slimline Wireless Charger

The new desktop or wall mountable charger remains as durable as the Standard Wireless with the facility to store your extra battery in the top compartment. The charger has an easy release button to remove your extra battery.



Standard Wireless Charger



New Slimline Wireless Charger

## Which system is right for you?

Vantage <i>Plus</i> Usable Life		
Power Source	LED	Bulb
Slimline Battery	6 hours*	1.5 hours*
Standard Battery	11 hours*	2.5 hours*
SmartPack	17 hours*	4.25 hours*

\* This measurement is based upon the illumination being used at normal examination power

## Wired

### SmartPack

SmartPack is a stylish power supply system that combines 3 options in one product.



Long lasting

No longer will you need to purchase a portable system for domiciliary use, another system for mounting on your wall and another for tabletop use.



### WallPack

Alternatively, if your power supply needs to be stationary you can purchase the WallPack which fits neatly on the wall. Your indirect can be mounted on the bracket it comes with.



**Keeler Ltd.**

Clewer Hill Road, Windsor  
Berkshire, SL4 4AA

**Tel: +44 (0) 1753 857177**

**Fax: +44 (0) 1753 827145**

**Email: [info@keeler.co.uk](mailto:info@keeler.co.uk)**

**Website: [www.keeler.co.uk](http://www.keeler.co.uk)**

**Keeler Scotland**

25 Deerdykes View,  
Westfield Estate

Cumbernauld

G68 9HN

**Tel: +44 (0) 1236 721214**

**Fax: +44 (0) 1236 721231**

**Keeler Instruments Inc.**

456 Parkway, Broomall  
PA 19008 USA

**Tel: 1 610 353 4350**

**Fax: 1 610 353 7814**

**Email: [keeler@keelerusa.com](mailto:keeler@keelerusa.com)**

**Website: [www.keelerusa.com](http://www.keelerusa.com)**

The Keeler logo is displayed in a bold, blue, sans-serif font. The letter 'K' is significantly larger than the other letters, and the 'e' and 'l' are also prominent. The logo is positioned in the bottom right corner of the page.