

## Specifications

### Microscope

Type	Galileo convergence
Magnification selection	3 steps by rotation drum
Magnification	10x, 16x, 25x
Eyepiece	12.5x
Diopter adjustment	-5D ~ +3D
Total magnification (field of view)	10x (φ 22.5 mm) 15.98x (φ 14.1 mm) 25.53x (φ 8.8 mm)

### Illumination

Slit width	Continuous from 0 to 14 mm
Slit length	Continuous from 1 to 14 mm
Aperture	Continuous from 1 to 14 mm, φ 0.3, 1, 5, 10, 14 mm
Slit angle	0° to 180°
Filter	Blue, Redfree
Light source	LED

### Power

Power consumption	40VA
Input (Primary)	AC 100-240V 50-60Hz

### Dimensions and Weight

Standard (with table top and chinrest)	550mm(W) x 399mm(D) x 520mm(H), 15.2 Kg
--	---

## Optional Accessories



» External Fixation Target (SO-FT02)



» Hruby Lens (SO-HL01)



» Yellow Filter



» Tonometer Mount for R900 (SO-TM1)



» Tonometer Mount for 870 (SO-TM2)

- » 12.5x Measuring Eyepiece
- » 20X Eyepiece
- » Parallel Binocular Tubes (PB-2)



TOPCON CORPORATION



TOPCON CORPORATION



TOPCON CORPORATION

\*Subject to change in design and/or specifications without advanced notice.

**IMPORTANT** In order to obtain the best results with this instrument, please be sure to review all user instructions prior to operation.

**TOPCON CORPORATION**  
75-1 Hasunuma-cho, Itabashi-ku, Tokyo 174-8580, Japan. Phone:+81-(0)3-3558-2522/2502 Fax:+81-(0)3-3965-6898 www.topcon.co.jp

**TOPCON MEDICAL SYSTEMS, INC.**  
111 Bauer Drive, Oakland, NJ 07436, U.S.A.  
Phone:+1-201-599-5100 Fax:+1-201-599-5250 www.topconmedical.com

**TOPCON CANADA INC.**  
110 Provencher Avenue, Boisbriand, QC J7G 1N1 CANADA  
Phone:+1-450-430-7771 Fax:+1-450-430-6457 www.topcon.ca

**TOPCON EUROPE MEDICAL B.V.**  
Essebeaan II, 2908 LJ Capelle a/d IJssel, P.O.Box 145,  
2900 AC Capelle a/d IJssel, THE NETHERLANDS  
Phone:+31-(0)10-4585077 Fax:+31-(0)10-4585045  
E-mail: medical@topcon.eu www.topcon-medical.eu

**ITALY OFFICE**  
Viale dell'Industria 60, 20037 Paderno Dugnano, (Milano), ITALY  
Phone:+39-02-9186671 Fax:+39-02-91081091 E-mail: info@topcon.it www.topcon.it

**DANMARK OFFICE**  
Praestemarksvej 25, 4000 Roskilde, DANMARK  
Phone:+45-46-327500 Fax:+45-46-327555  
E-mail: topcon@topcondanmark.dk www.topcondanmark.dk

**IRELAND OFFICE**  
Unit 276, Blanchardstown, Corporate Park 2 Ballycoolin Dublin 15, IRELAND  
Phone:+353-18975900 Fax:+353-18293915 E-mail: medical@topcon.ie; www.topcon.ie

**TOPCON S.A.R.L.**  
BAT A1 3 route de la révolte 93206 SAINT DENIS CEDEX  
Phone:+33-1-49-21-23-23 Fax: +33-1-49-21-23-24 E-mail:topcon@topcon.fr; www.topcon.fr

**TOPCON DEUTSCHLAND MEDICAL G.m.b.H.**  
Hanns-Martin-Schleyer Strasse 41, D-47877 Willich, GERMANY  
Phone:+49-(0)2154-8850 Fax:+49-(0)2154-885177 E-mail:med@topcon.de; www.topcon.de

**TOPCON SCANDINAVIA A.B.**  
Neongatan 2, P.O.Box 25, 43151 Mölndal, SWEDEN  
Phone:+46-(0)31-7109200 Fax:+46-(0)31-7109249 E-mail:medical@topcon.se; www.topcon.se

**TOPCON ESPAÑA S.A.**  
HEAD OFFICE  
Frederic Mompou 4 Esc. A Bajos 3, 08960 Sant Just Desvern Barcelona, SPAIN  
Phone:+34-93-4734057 Fax:+34-93-4733932 E-mail: medica@topcon.es; www.topcon.es

**TOPCON ( GREAT BRITAIN ) LTD.**  
Topcon House, Kennet Side, Bone Lane, Newbury, Berkshire RG14 5PX United Kingdom  
Phone:+44-(0)1635-551120 Fax:+44-(0)1635-551170 E-mail:medical@topcon.co.uk www.topcon.co.uk

**TOPCON POLSKA Sp. z o.o.**  
ul. Warszawska 23, 42-470 Siewierz, POLAND  
Phone:+48-(0)32-6705045 Fax:+48-(0)32-6713405 www.topcon-polska.pl

**TOPCON SINGAPORE MEDICAL PTE. LTD.**  
1 JALAN KILANG TIMOR #09-01 PACIFIC TECH CENTRE SINGAPORE 159303  
Phone:+65-68720606 Fax:+65-67736150  
E-mail:medical\_sales@topcon.com.sg www.topcon.com.sg

**REPRESENTATIVE OFFICE IN INDONESIA**  
Level 38, Tower A, Kota Kasablanka Unit GH-04, Jl. Casablanca, Kav 88, Jakarta, Indonesia 12870  
Phone:+62-21-2963-8004

**TOPCON INSTRUMENTS ( MALAYSIA ) SDN.BHD.**  
No. D1, (Ground Floor), Jalan Excella 2, Off Jalan Ampang Putra,  
Taman Ampang Hill, 55100 Kuala Lumpur, MALAYSIA  
Phone:+60-(0)3-42709866 Fax:+60-(0)3-42709766

**TOPCON INSTRUMENTS ( THAILAND ) CO.,LTD.**  
77/62 Sinsashorn Tower, 37th Floor, Krungthronburi Rd, Klongtongsi,  
Klongsarn, Bangkok 10600, THAILAND  
Phone:+66(0)2-440-1152-7 Fax:+66-(0)2-440-1158

**TOPCON CORPORATION BEIJING OFFICE**  
Block No.9, Kangding Street Beijing Economic-Technological Development Area,  
Beijing, 100176, CHINA  
Phone:+86-(0)10-6780-2799 Fax:+86-(0)10-6780-2790



# SL-2G

Slit Lamp

PERFORMANCE  
YOU CAN COUNT ON

**TOPCON**

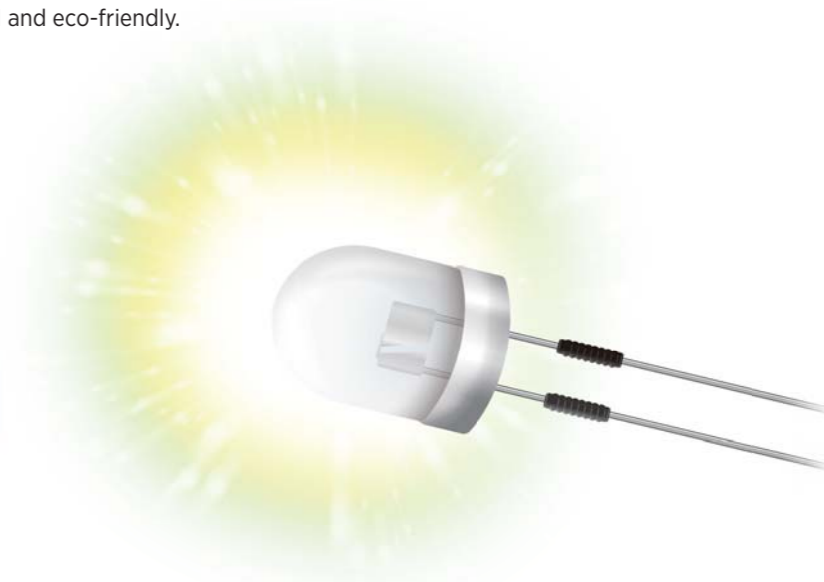
# Basic, Economical, Environmentally Friendly - SL-2G LED Slit Lamp

Long Life LED Illumination Saves Power, Helps the Environment and Reduces Bulb Replacement.

## Still Using Halogen Lamp Illumination?

Light Emission Diodes (LEDs) are increasingly being applied to optical and medical instrumentation thanks to their clear and bright light, low heat illumination and long life. LEDs also have the added advantage of being environmentally friendly reducing the waste of frequently replacing halogen and tungsten bulbs.

As a leader in Ophthalmic Instrumentation, Topcon is incorporating LED as the main illumination in its SL-2G slit lamp. The approx 10,000 hours lifetime of the LED is expected of 100 times longer than conventional halogen bulbs. This makes the SL-2G easier to maintain, economical and eco-friendly.

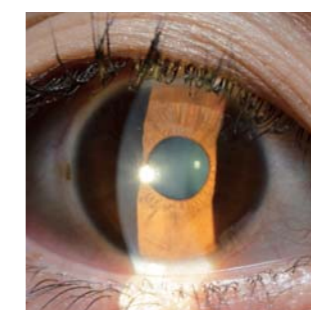


## Features

- » Long Life and Power-Saving LED Illumination
- » Easy to Install with Incorporated AC Power Supply
- » Three Magnifications (10x; 16x; 25x)
- » Compact and Practical , Ergonomic Design

## Quality of Illumination

Uniform and consistent illumination is achieved by LED source.



## Three Magnifications

10x, 16x, 25x cover the needs for a comprehensive slit lamp examination.



## Smooth Illumination Adjustment

The LED illumination can be adjusted continuously from 0 to maximum.



## AC Adapter

The AC adapter included with the SL-2G enables the use of any power source and adds flexibility to the installation in different types of furniture and delivery systems.

