



The Hood Glaucoma Report

This new glaucoma report has been developed in collaboration with Professor Donald C. Hood. It aids understanding of the relationship between retinal damage and visual field loss.

3D Wide Glaucoma Report with VF test points (Hood report)

Created by Prof. Donald Hood

DRI OCT-1

Print Date: 2016/05/11



ID: NFLD

Ethnicity:

Technician:

Name: NMNFLD

Gender:

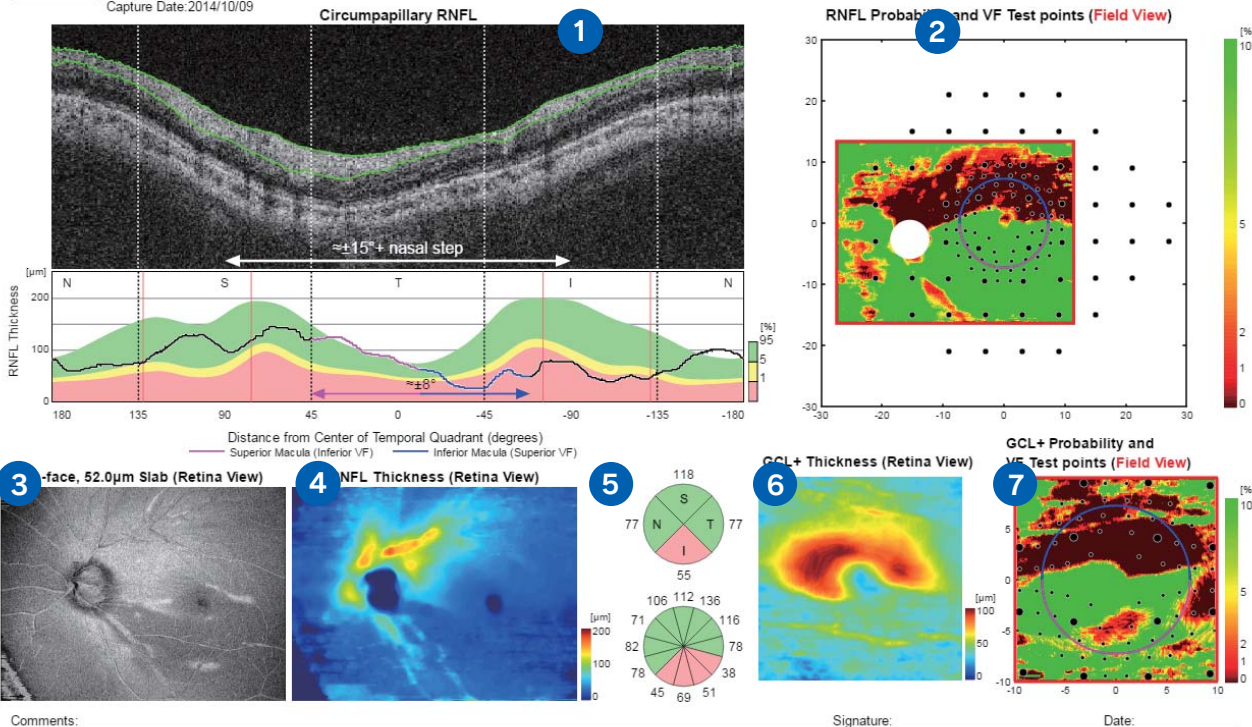
Fixation: Wide

OS(L)

Image Quality: 58 Analysis mode: Fine (2.0.7)
Capture Date: 2014/10/09

DOB: Age:

Scan: 3D(12.0x9.0mm - 512x256)



1 OCT B Scan of Circumpapillary RNFL with reference data database:

NSTIN plot centers OCT B Scan and reference data base RNFL temporally and makes it easier to associate these images with the visual fields. White line on Bscan shows area of RNFL bundles that account for 80% of vision. Red vertical lines on NSTIN graph represent location of major blood vessels. Pink and blue arrows on NSTIN graph show the macula region (+8° and -8° from center of visual field)

2 Correlation of OCT RNFL data (structure) with visual field test locations (function)

RNFL thickness map is flipped vertically to correspond with visual field report. 24-2 test points (large points) and 10-2 test points (small points) make it easier to see the relationship between structure and function. Hot colors show a thinning of RNFL and a higher probability of VF defect.

Circle indicates 8 degree area from fovea

Pink and blue portions of circle relate to the pink and blue lines in the center of the circumpapillary NSTIN RNFL Chart (1).

3 Wide field OCT Enface image (12mm x 9mm area)

Wide field OCT Enface image of a 52 µm from the ILM provides a quick visualization of possible RNFL defects.

4 Wide field RNFL thickness map (12mm x 9mm area)

Wide field RNFL thickness map provides panoramic view of RNFL thickness significantly increasing the amount of viewable data over compared to a 6 x 6 or circle scan

5 Circumpapillary RNFL thickness 4 sector and 12 clock charts with reference database.

6 GCL+ IPL thickness map

Provides GCL + IPL thickness compared to a reference data base of a 10 ° area surrounding fovea.

7 Correlation of OCT GCL + IPL data (structure) with visual field test locations (function)

GCL + IPL thickness map is flipped vertically to correspond with visual field report. 24-2 test points (large points) and 10-2 test points (small points) make it easier to see the relationship between structure and function.

Hot colors show a thinning of GCL + IPL and a higher probability of VF defect.



YOUR VISION. OUR FOCUS.

¹ Professor Donald C Hood, Department of Ophthalmology & Department of Psychology, Columbia Univ. New York

² Not available for Sale in the US