

## Welcome to Hair Freedom

Try these styles & more:



Scan this QR code or visit [hairzing.com/pages/how-to](http://hairzing.com/pages/how-to) to watch step by step hairstyle tutorials



## Your Stretch Banana Comb Comes with a Guarantee



Excellent Support



30 Day Return & Replacement

It's simple really. We invented HairZing to be the perfect handmade hair accessory for your hair type and we stand by it 100%.

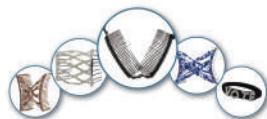
If within 30 days you're not satisfied with your order, neither are we. We'll make it right. Use any of the following contact info to get in touch:

customercare@hairzing.com  
1-888-402-4247  
[hairzing.com/pages/help](http://hairzing.com/pages/help)



Designed & Handmade by Women, for Women in Oakland, California since 2005.  
U.S. Pat. #'s: 7,748,390, 8,413,667; D518,599; D532,551; D697,261; D702,881, D715,488; & other USA and International Patents Pending.

## Enter to Win a FREE HairZing Set



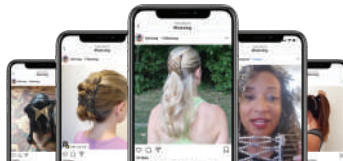
Each month, we give away all HairZing product styles to one lucky winner.\* Plus, we love to see how you style your hair.

**Enter now with 2 simple steps, so you can create even more styles.**

- 1) Make a social media post with a gif, image, or video. Post it on YouTube, Pinterest, Instagram, or Facebook.
- 2) No matter what social media platform you choose, include the hashtag #MyHairZing and tag us @hairzing.



\*No purchase necessary. Valid in the U.S. only.  
Visit [hairzing.com/pages/promotions](http://hairzing.com/pages/promotions) for full details.



hairzing  
LOVE YOUR HAIR. SHOW YOUR STYLE.

Your New Stretch  
Banana Comb is here





### Step 1:

After preparing your hair, hold the Stretch Banana Clip in both hands (See photo ↑), with your right thumb underneath resting on the HairZing label, fingers on top, and the stretch elastic on the bottom.

*Tip: Your thumb should rest on the HairZing label.*



Right Thumb on HairZing Label



### Step 2:

Position the stretch elastic hinge at the nape of your neck. Insert with all teeth flat against your scalp, slide upward, scooping hair until teeth fill and feel snug.

Others find it easier to insert the comb one side at a time.

*Tip: The thickness of your hair determines where to insert the first comb. With fine, silky hair, try inserting closer to your ears at the hairline.*



Fine Hair  
Type 1-2



Curly Hair  
Type 3



Coily Hair  
Type 4



### Step 3:

Slide the teeth of both combs toward each other at the same time, maintaining constant contact on your scalp. It is important the teeth lay flat on your scalp, not float in your hair.

*Tip: It is important the teeth lay flat on your scalp, not float in your hair. The stretch activates the hold.*



Teeth bent? Just push them back into place. They are meant to flex around your roots.



### Step 4:

Hold both combs steady with one hand. Stretch the looped elastic cord completely over and around the closure to secure in place. Adjust for comfort.

For a looser hold, use the 1st loop. For a tighter, snuggler feel, use the 2nd loop.



Looped Elastic



Bar Closure



Bead Closure



Button Closure