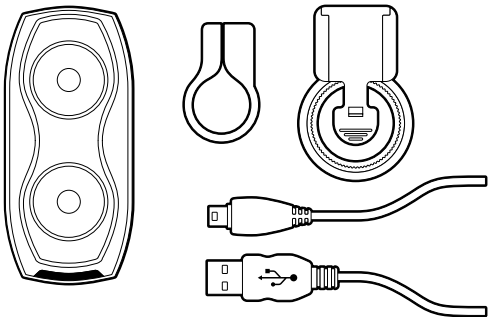




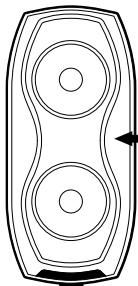
ridepdw.com | 503-234-7257
15 NE Hancock St Portland OR 97212

What's in the box:



Battery Care Notes:

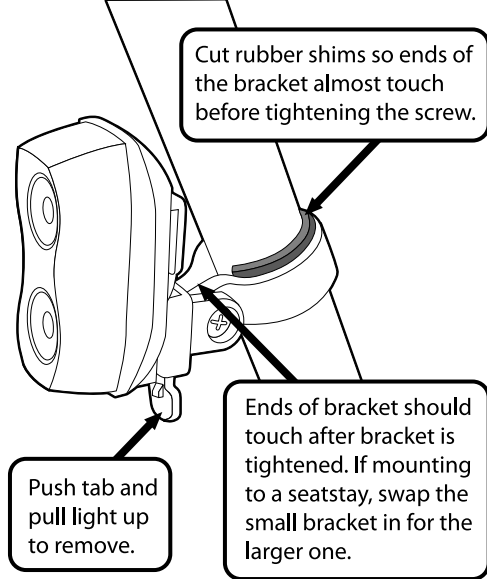
- Leaving the light plugged into a power source or charging before the light is fully depleted will **not** harm the battery.
- **Charge the battery at least once every 2 months to maintain battery health.**



- ☀ Blue flash = charging
- Solid Blue = fully charged

The Danger Zone™ will charge from empty to full in about 3 hours

Plug smaller end of mini USB cable into the Danger Zone™ and the other end into a USB port on a computer or wall socket adapter.




Cut rubber shims so ends of the bracket almost touch before tightening the screw.

Ends of bracket should touch after bracket is tightened. If mounting to a seatstay, swap the small bracket in for the larger one.

Push tab and pull light up to remove.

Operation:

- **Press and hold the  button for 1 second** for *Dance* | *Breathe* | *10%* | *Solid* | *Off* modes.
- Light will automatically switch to a slow flash reserve mode when battery is low.
- Light will automatically turn off to protect the battery around 2-3 hrs after reserve mode begins.



Warranty:

Lifetime warranty covering manufacturing defects except as follows: Two years on electrical components and one year on batteries

Spare parts available at:
www.ridepdw.com/goods/spare-parts