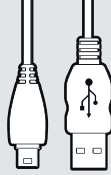
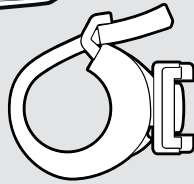
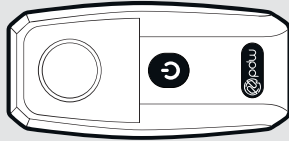


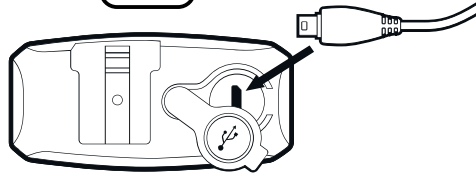


What's in the box:



ridepdw.com | 503-234-7257
3625 SE 21st Ave Portland, OR 97202

Charging



Charging indicator on front of light:

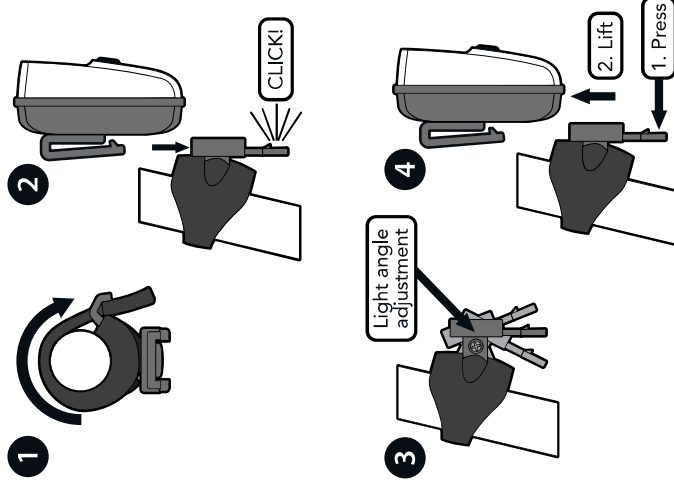
- Blue flash = charging
- Solid Blue = fully charged

Tail light will charge from empty to full in 2.5 hours.

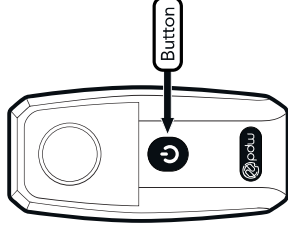
Battery Care Note:

- Leaving the light plugged into a power source or charging before the light is fully depleted will not harm the battery.
- Charge the battery at least once every 2 months to maintain battery health.

stayputnik™ Mount



Operation



- Press and hold button for 1 second for on/off.
- Tap button to change between functions.
- When battery is low, light automatically switches to a slow flash reserve mode.

Warranty:

Lifetime warranty covering manufacturing defects except as follows: 2 years on electrical components and one year on batteries.

Spare parts available at:

www.ridepdw.com/goods/spare-parts