

# TOUR

# MERIDA

Easygoing and open to possibilities, Tour is the ideal companion. The textural wool stripe is both calm and interesting.

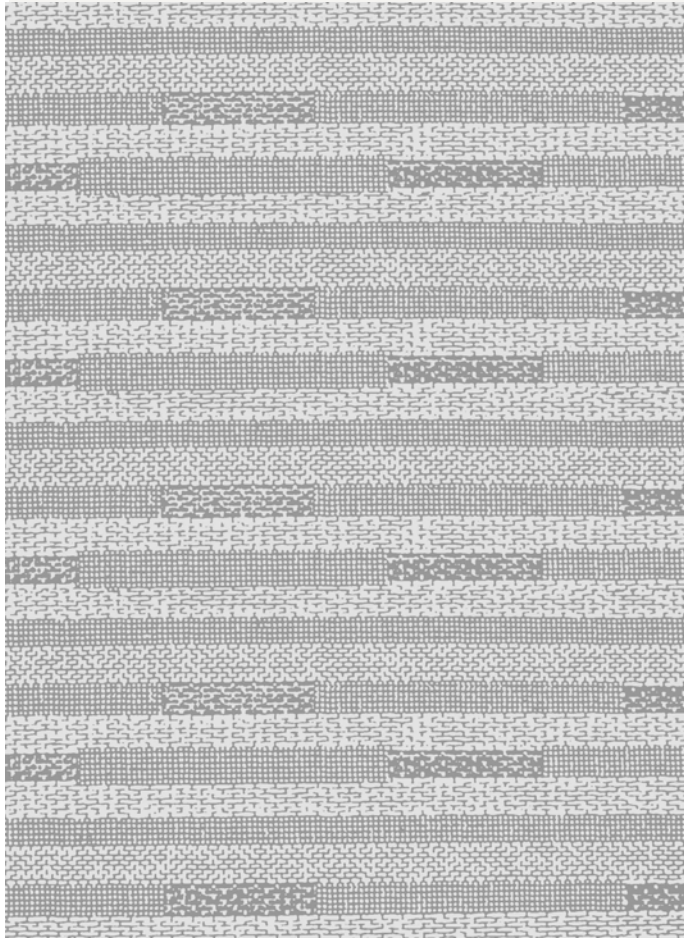
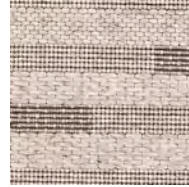


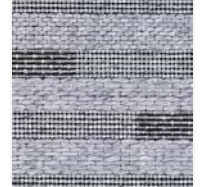
IMAGE ABOVE REPRESENTS A 2' X 3' VIEW



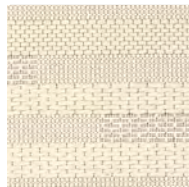
ASH RAISIN  
Ash Wool, Raisin Sisal



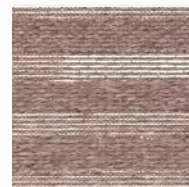
ASH NATURAL  
Ash Wool, Natural Sisal



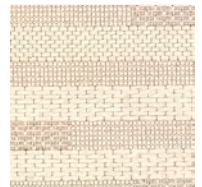
BAY UMBRIA  
Bay Wool, Umbria Sisal



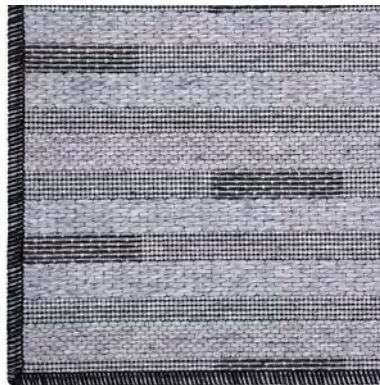
DOVE NATURAL  
Dove Wool, Natural Sisal



MINK NATURAL  
Mink Wool, Natural Sisal



DOVE ALMOND CREAM  
Dove Wool, Almond Cream Sisal



### DOUBLE SERGE FINISHING

Tour in Bay Umbria, finished with a double serge of custom dyed linen and thin felted wool yarns.

CONSTRUCTION	WOVEN	USAGE	LIGHT CONTRACT
FIBER CONTENT	57% WOOL, 23% SISAL, 17% JUTE, 3% COTTON	LEAD TIME	4-6 WEEKS
MAX WIDTH	13'1"	BACKING	LATEX
PATTERN REPEAT	30" W X 9.5" H	MADE IN	BELGIUM