

# ATELIER

---

Beauty and originality define the Atelier collection. Imaginative design, innovative materials and weaves, and ingenious techniques create subtle, minimal rugs.

## SAGA 118

Saga's varied weaves and weft spacing give each pattern its own rhythm and voice: nuanced, subtle, and poetic.

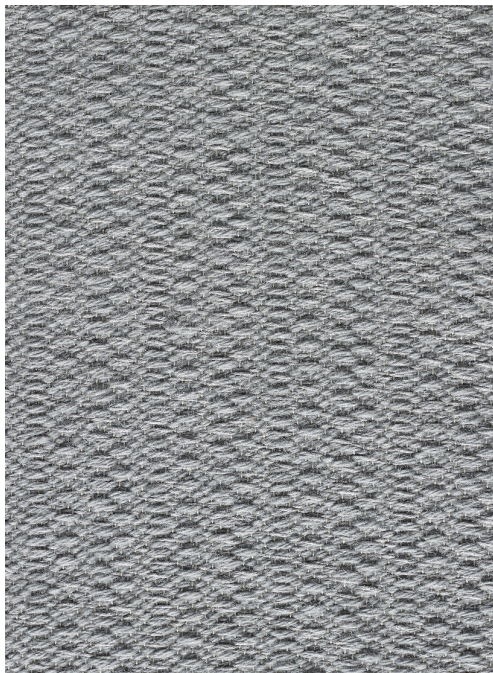
Up an octave from the rest of the collection, Saga 118 features a structured sound through its deeper tones. In an arrangement of satin weave and varied warp spacing; the eye is not drawn to a particular spot, but absorbs the whole ocean of the design.

### YARN SPOTLIGHT

- Linen and Mohair blend together to create a marbled effect. The mixing disrupts the weave and randomizes the surface.
- Linen brings neutral hues to the Mohair, softening the intense color.
- Thick Cotton is used in the warp to highlight the shifting weave structures.

### NOTES

- Each sample is a small version of a full-sized rug.
- Lead time may be increased due to production demand. For current lead times, please contact your Merida representative.
- Natural fibers reflect slight variation in color, so samples may vary slightly from the finished rug you receive. The resulting imperfection gives the rug its unique character.
- Visit [meridastudio.com](http://meridastudio.com) for detailed information about natural fiber characteristics and proper care.



ELEPHANT-RHINO

## SAGA 118

**CONSTRUCTION:** Dobby Woven

**MAX WIDTH:** Approx. 12' 02"

**SEAMABLE:** Yes

**BACKING:** 100% Cotton

**FIBER CONTENT:** 65% Mohair | 28% Linen | 7% Cotton

**PATTERN REPEAT:** N/A

**RUG FINISHING:** Double Serge

**USAGE:** Residential

**MADE IN:** USA

**STANDARD LEAD TIME:** 16 Weeks

---

## MERIDA

Merida is an American textile design house and rug maker that is defined by design innovation and originality. Our rugs are inventive, ingenious collaborations, between our designers and our craftspeople, between materials and weaves, between hand and machine. We create made-to-order rugs in our Fall River, Massachusetts workshop in a process that blends hand and machine techniques in perfect measure.

1 Currant Road, Fall River, Massachusetts 02720 800.345.2200  
[connect@meridastudio.com](mailto:connect@meridastudio.com) [meridastudio.com](http://meridastudio.com) [@meridastudio](https://www.instagram.com/meridastudio)

### New York Design Center

200 Lexington Avenue, New York, New York 10016

### Harbinger by Hand

752 North La Cienega Boulevard, West Hollywood, California 90069

### Boston Design Center

1 Design Center Place, Suite 330, Boston, Massachusetts 02210