

MOKO

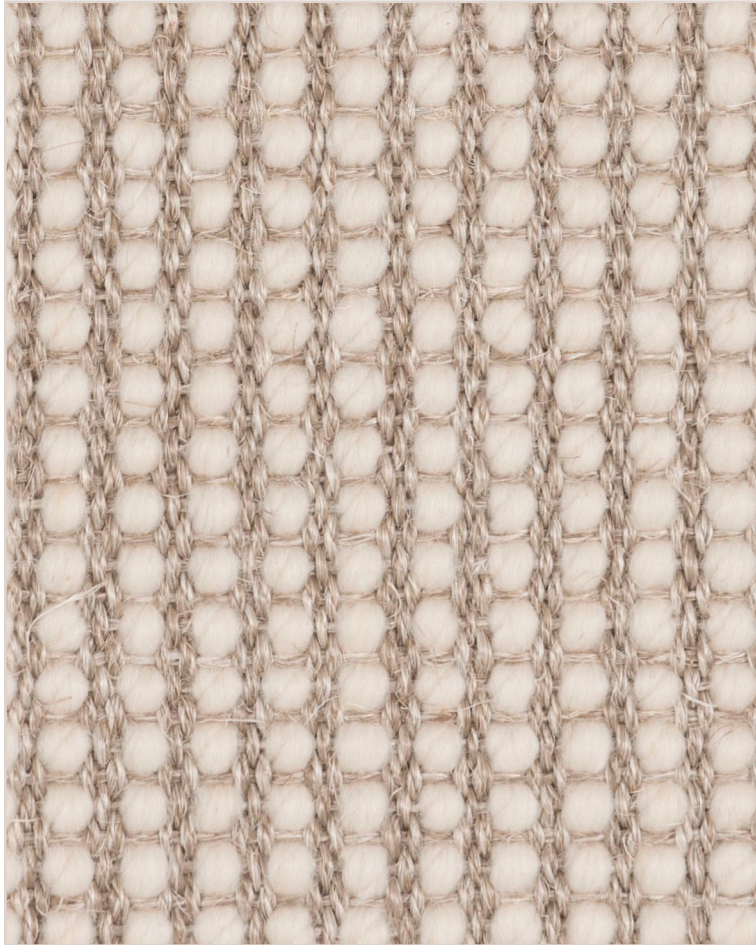
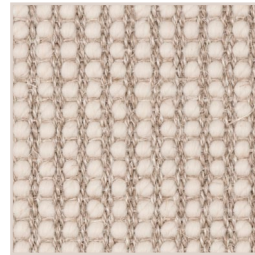
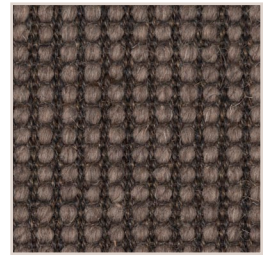


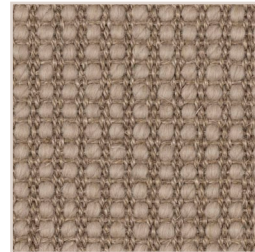
IMAGE ABOVE REPRESENTS A MAGNIFIED VIEW



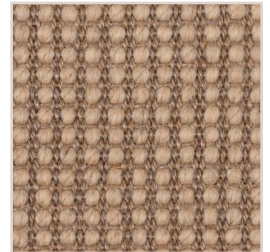
ASHBURTON



CROMWELL



KAPUA



WYNDHAM

Colors shown may differ slightly from actual product. Refer to a physical sample for true color representation. Talk to our project team about custom finishing options.

CONSTRUCTION	WOVEN	USAGE	LIGHT CONTRACT
FIBER CONTENT	60% SISAL & 40% WOOL	LEAD TIME	2 WEEKS
MAX WIDTH	13'1"	BACKING	JUTE
PATTERN REPEAT	N/A	MADE IN	BELGIUM