

# MERIDA

## DASH

With varying weaves and hand-laced suede, Dash beautifully redefines stripes.

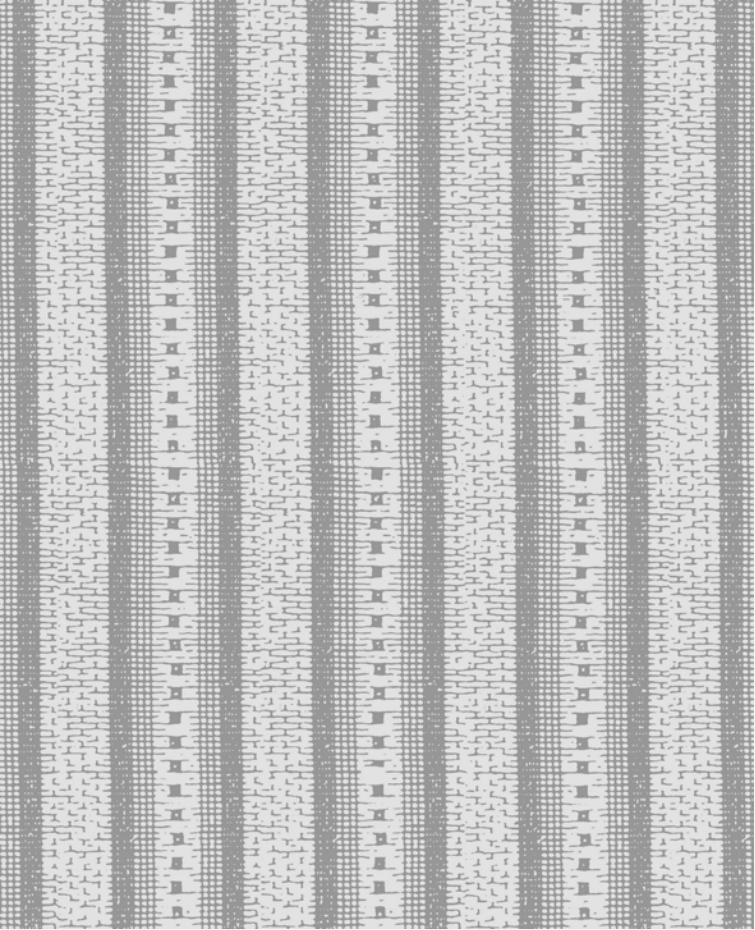


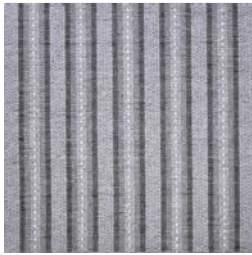
IMAGE ABOVE REPRESENTS A 2' X 3' VIEW



DOVE ELEPHANT  
Dove Wool, Elephant Sisal



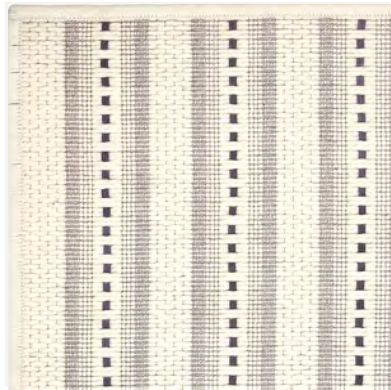
ASH NATURAL  
Ash Wool, Natural Sisal



BAY UMBRIA  
Bay Wool, Umbria Sisal



ASH RAISIN  
Ash Wool, Raisin Sisal



DOUBLE SERGE FINISHING  
Dash in Dove Elephant, finished with a double serge of custom dyed, linen and thin felted wool yarns.

CONSTRUCTION	WOVEN	USAGE	RESIDENTIAL
FIBER CONTENT	57% WOOL 23% SISAL 17% JUTE 3% COTTON	LEAD TIME	4-6 WEEKS
MAX WIDTH	13'1"	BACKING	LATEX
PATTERN REPEAT	6 <sup>1/2</sup> " W	MADE IN	BELGIUM