

# TOURO

# MERIDA

Choose from four handsome colorways, or customize from our versatile yarn palette.

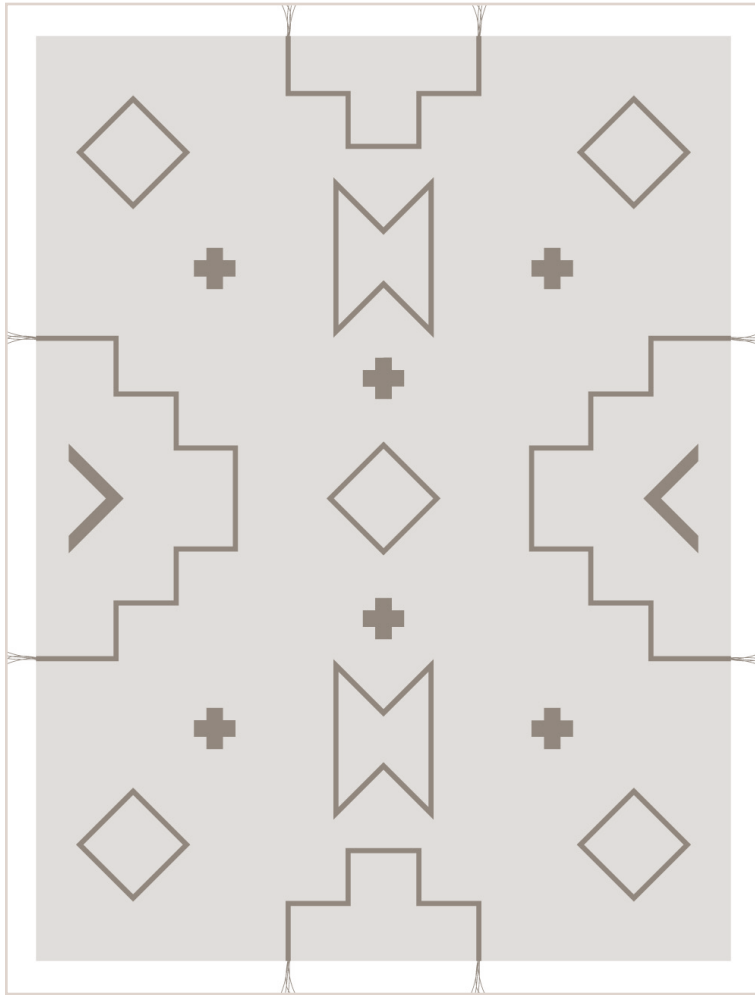
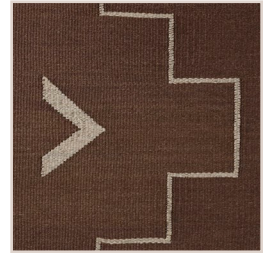


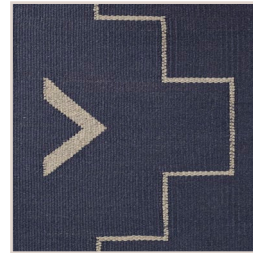
IMAGE ABOVE REPRESENTS A 9'X12' VIEW



**BLACK PEARL**  
SISAL PEARL, SUEDE  
BLACK



**CHOCOLATE**  
SISAL CHOCOLATE, SUEDE  
MARSHMALLOW



**LAPIS**  
SISAL LAPIS, SUEDE  
MARSHMALLOW



**NATURAL**  
SISAL NATURAL, SUEDE  
CARAMEL

Colors shown may differ slightly from actual product. Refer to a physical sample for true color representation. Talk to our project team about custom finishing options. Due to the nature of handmade rugs, please be advised that there might be slight variances in color and size. Standard allowable variance is 3.5% of the overall size of the rug.

<b>CONSTRUCTION</b>	HAND WOVEN	<b>USAGE</b>	RESIDENTIAL
<b>FIBER CONTENT</b>	SISAL & SUEDE	<b>LEAD TIME</b>	12 WEEKS
<b>MAX WIDTH</b>	19'6" X 39'	<b>BACKING</b>	NONE
<b>PATTERN REPEAT</b>	N/A	<b>MADE IN</b>	BRAZIL
<b>COLLECTION</b>	ASHE + LEANDRO FOR MERIDA		