

# MERIDA

## GEMEOS

Choose from four handsome colorways, or customize from our versatile yarn palette.

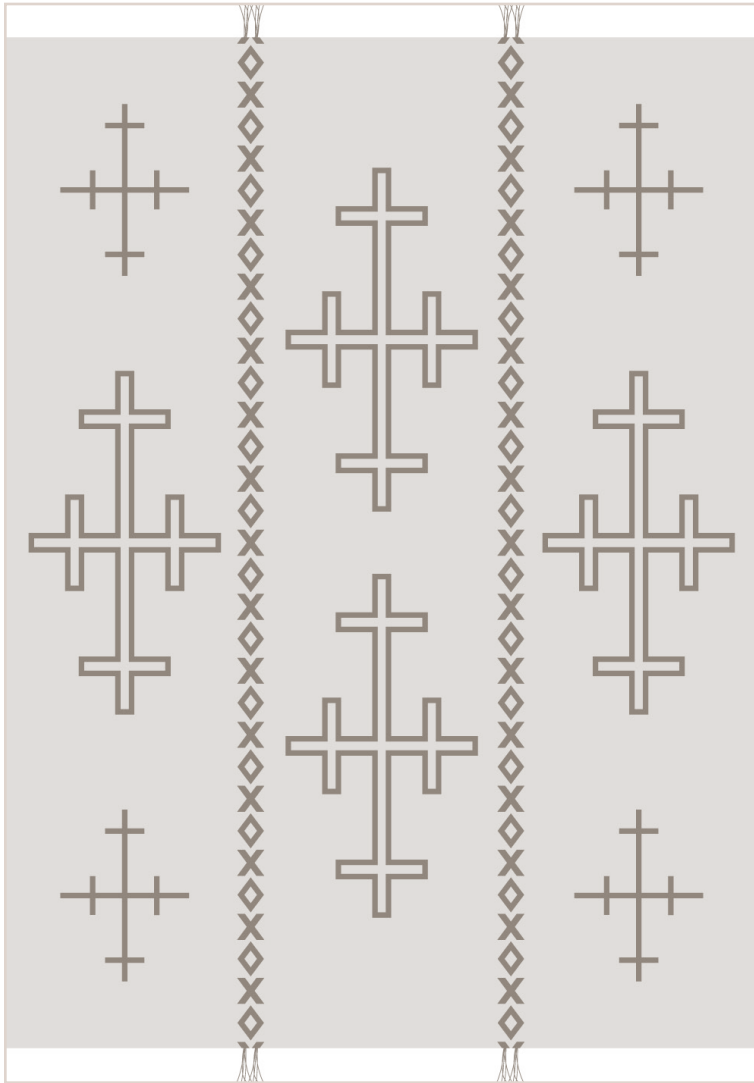


IMAGE ABOVE REPRESENTS A 9'X12' VIEW



**LAPIS**  
SISAL LAPIS, SUEDE  
MARSHMALLOW



**NATURAL**  
SISAL NATURAL, SUEDE  
CARAMEL



**NAVY PEARL**  
SISAL PEARL, SUEDE  
NAVY



**RED**  
SISAL RED, SUEDE  
TAUPE

Colors shown may differ slightly from actual product. Refer to a physical sample for true color representation. Talk to our project team about custom finishing options. Due to the nature of handmade rugs, please be advised that there might be slight variances in color and size. Standard allowable variance is 3.5% of the overall size of the rug.

<b>CONSTRUCTION</b>	HAND WOVEN	<b>USAGE</b>	RESIDENTIAL
<b>FIBER CONTENT</b>	SISAL & SUEDE	<b>LEAD TIME</b>	12 WEEKS
<b>MAX WIDTH</b>	19'6" X 39'	<b>BACKING</b>	NONE
<b>PATTERN REPEAT</b>	N/A	<b>MADE IN</b>	BRAZIL
<b>COLLECTION</b>	ASHE + LEANDRO FOR MERIDA		