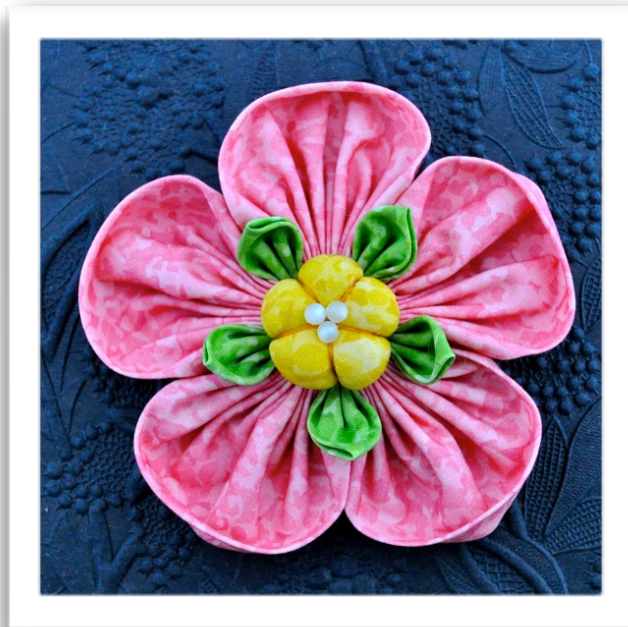


Sew, not grow, your own

Sweet Sakura Brooch

Finished size of brooch 4 1/2" across



..... Project Overview

First, cut out and press your fabric pieces. You'll be stringing 5 round pink petals and 5 pointed green petals onto a single thread, then tying the ends of the thread to create a petal ring. Then, gather and stuff a fabric circle for the center. Embellish the center with embroidery floss and beads. Glue all elements together and apply pin backing.

..... Supplies

- Fabric #1: (1) Fat quarter quilting cotton (Pink outer Petals)**
Fabric shown here: 'Salt' Y1214-39 by La Todera for Clothworks
- Fabric #2: (1) Fat quarter quilting cotton (Green pointy petals)**
Fabric shown here: 'Salt' Y1214-21 by La Todera for Clothworks
- Fabric #3: (1) Fat quarter quilting cotton (Yellow center puff)**
Fabric shown here: 'Salt' Y1214-10 by La Todera for Clothworks
- Strong thread:** i.e.: Gutermann Extra Strong Thread (any color)
- Beads:** 3 small pearl like beads
- Poly-fil stuffing:** Small handful
- Embroidery floss:** Dark Yellow
- Green felt:** 2" by 3" Section
- Pin back-** (1) 1 1/4" Long
- Long sharp hand sewing needle** (i.e.: appliqué needle) that fits through beads used in Step 9.
- Hot glue gun and glue sticks**
- Pinking shears**
- Clear template plastic**



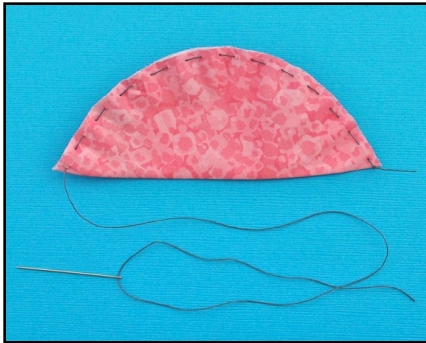
..... Cutting

Trace templates onto clear template plastic. Cut out. Cut out all fabric shapes indicated on templates. Finish edges of felt pieces (**Templates D and E**) with pinking shears.



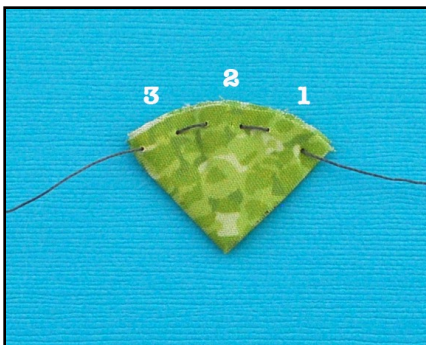


1. Fold shapes cut from **Templates A** in half lengthwise, right side out. Press. Fold **Template B** circles in quarters, right side out. Press.



2. Thread needle with 20" strong thread. Take (1) **Template A** shape- sew a $\frac{3}{8}$ " running stitch $\frac{1}{8}$ " from raw edge. Begin and end sewing on top side of work. Do not backstitch or cut thread.

***Important:** Maintain an accurate stitch length!. Be sure to always start and end stitching on the top side of your petals. Leave your finished petals on the thread - without backstitching.



3. Continue with a **Template B** pointed petal. Stitch (3) in and out stitches as shown and leave it on the thread next to the large pink petal.



4. Add the rest of the petals in the same manner, alternating the large and small petals. You should have a total of 5 large and 5 small petals on the thread.



5. Gather the 10 petals to the center of the thread. Scrunch them together as closely as possible. Tie ends of thread together carefully so that petals form a donut shape. The 'hole' of the donut should be as small as you can make it (around $\frac{3}{4}$ " across). Clip threads.

Find right side of flower. Pull small green petals up and away from larger ones. Manipulate large pink petals into spoon shapes by pushing your thumb into the center of each petal.



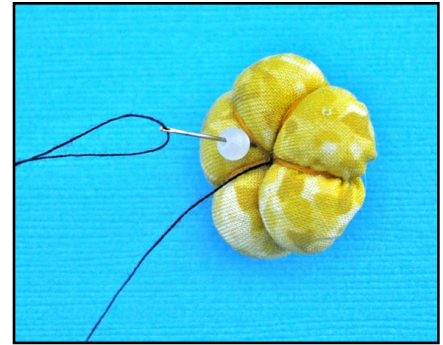
6. Take yellow circle (**Template C**). Using a single strand of the heavy thread, stitch $\frac{1}{8}$ " away from the raw edge using $\frac{1}{4}$ " stitch length. Stitch all around the circumference, starting and ending on the right side of the fabric. Don't backstitch yet.



7. Gather the circle up into a cup shape, insert the wad of stuffing, and pull thread tight to close the circle. Tie off and trim thread. Press to flatten puff.



8. Switch needles to embroidery needle. Thread 3 strands of embroidery thread about 20" long onto needle and tie large knot at end. Starting from the backside of puff, bring needle up 1/4" in from edge. Wrap thread around to the back side of the puff and bring needle up through the same hole. Again, wrap thread around to the back side of the puff and bring needle up through same hole. Pull tight. Now bring needle back down (a few threads over,) so that floss is now on back side. Bring needle up about 1/4" over from first stitches, 1/4" in from edge. Repeat wrap stitches until you have 5 'indentations' around perimeter of puff.



9. Switch back to your sewing needle and a single strand of thread that closely matches the color of your beads. Make a large knot at the end of the thread. Bring thread up at edge of a floss line. Thread a bead on, and stitch back down through the center. Repeat for the 2 remaining beads. Tie off on back and clip threads.



10. Apply small amount of hot glue to inner ring of petal ring. Apply center puff, covering raw edges of petal ring.



11. Apply hot glue to larger circle of felt (Template **D**) and center over opening on back of flower. Glue bar pin on center of felt. Apply glue to small felt circle (Template **E**) and apply over bar pin as shown. **Done!**

Sweet Sakura Brooch

Templates

