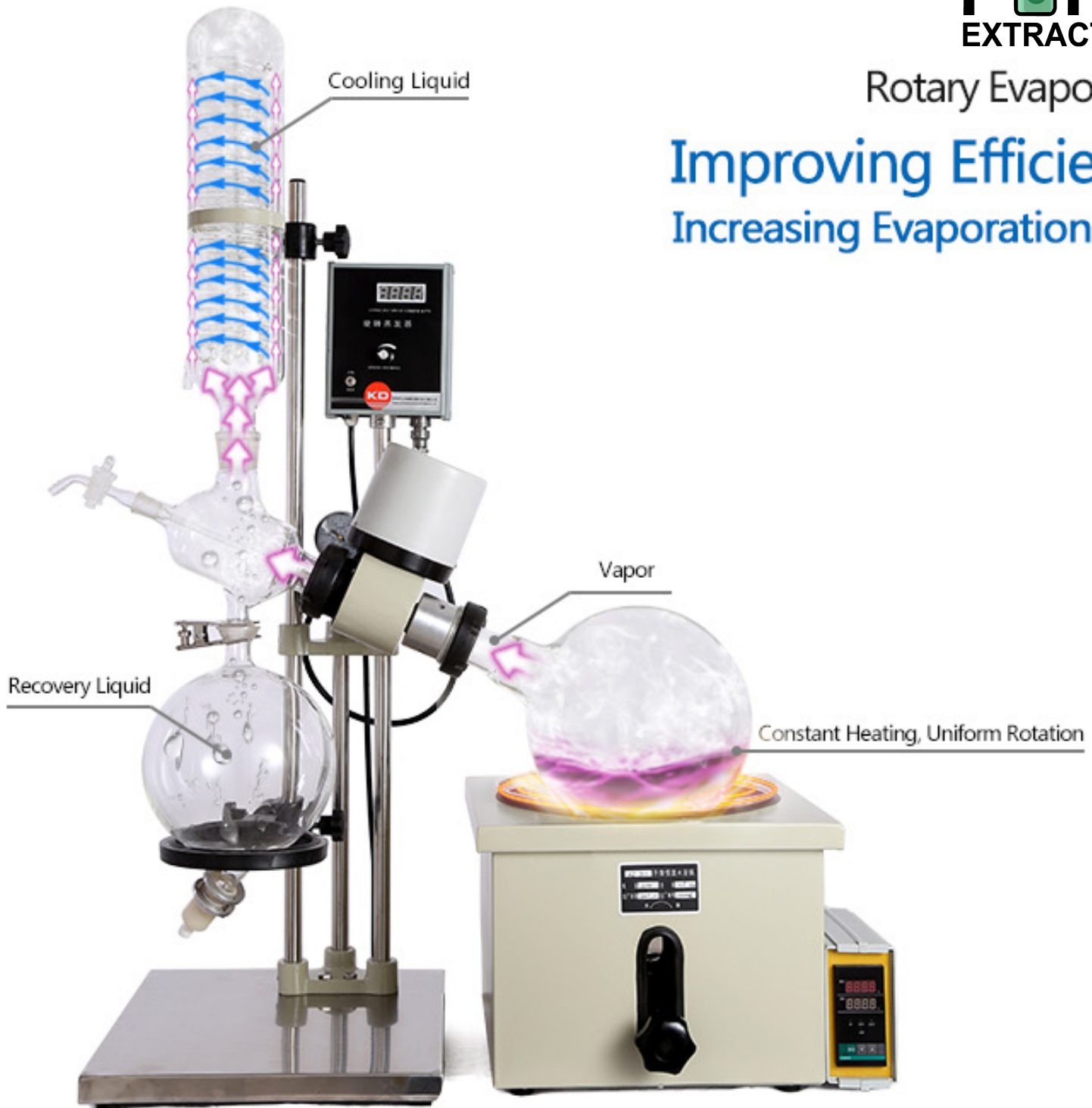


# Improving Efficiency Increasing Evaporation Rate



## Working Principle

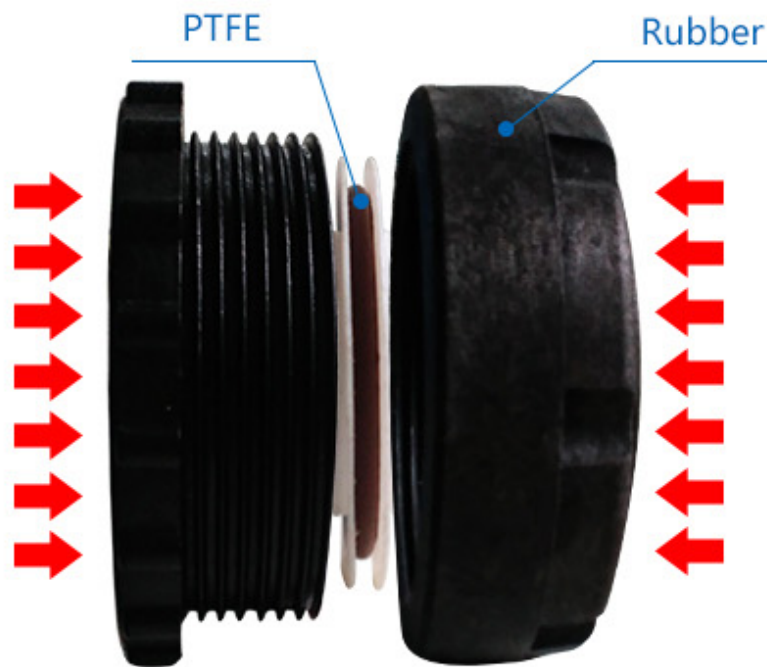
Rotary evaporators are distillation units that incorporate an efficient condenser with a rotary flask system. As the flask containing the solvent is rotated it continually transfers a thin layer of liquid over the entire inner surface. This gives a very large surface area for evaporation that is effected by heating from the accessory water or oil bath.



## FLANGE

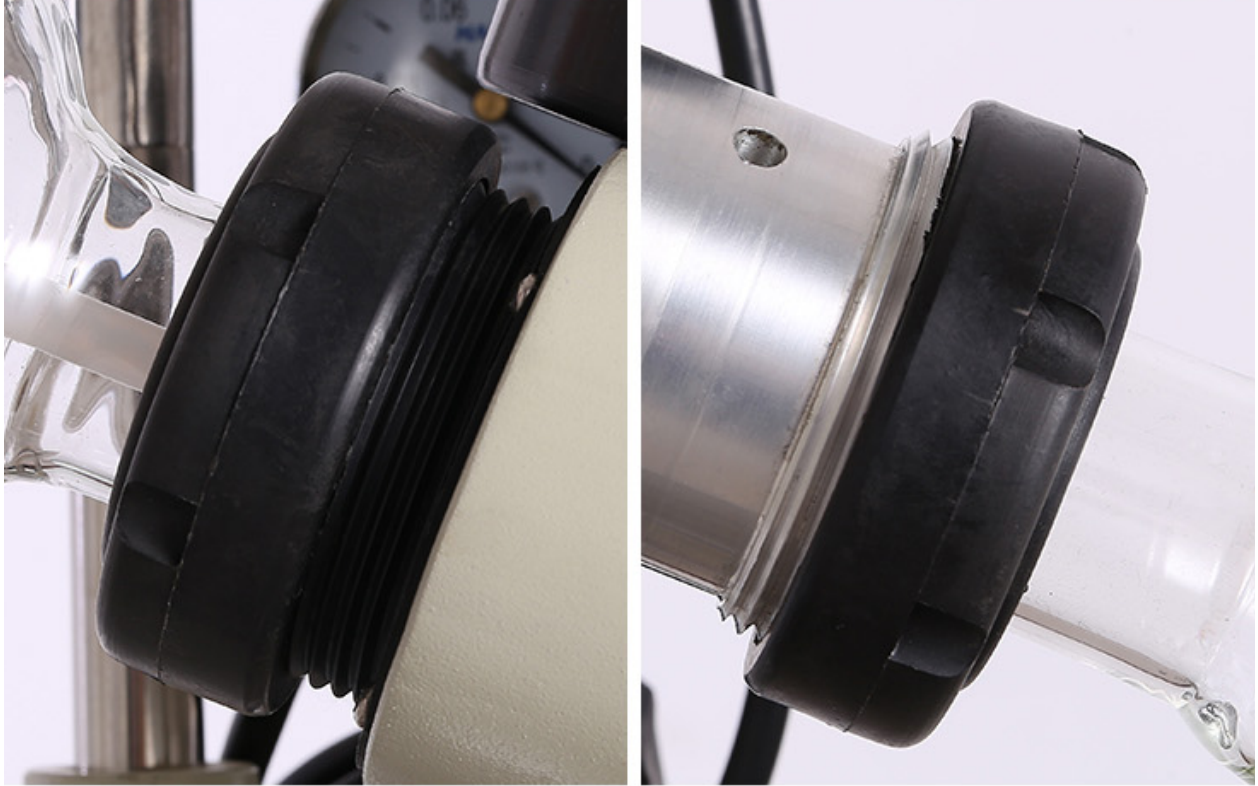
Perfect for you to solve sealing problems

- High hardness, high temperature resistant, abrasion-proof
- Gasket: PTFE



### Flange Sealing Principle

With the space between the flange getting smaller, gasket would be deformed to fill up the gaps. Thus we can prevent leakage and achieve sealing function.



No leak | No deformation | High and low temp-resistance | Anti-corrosion | Nonhazardous | Abrasion-proof

## PRODUCT INTRODUCTION



## Product Parameters

	<b>RE-501</b>
Evaporating Flask (L)	5
Receiving Flask (L)	3
Rotating Motor (W)	40 ( Stepless speed regulation )
Rotating Speed (R/min)	0-120
Water(Oil) Bath Power(kw)	1500
Temperature Control Mode/Range	Intelligent digital/RT-399°C
Temp. Resolution	±1°C
Evaporation Rate (L/H2O)	≥1.5
Max Vacuum Degree	0.098Mpa
Lifting Height(mm)	0-120
Water Bath Size	Φ28*17
Condenser	Vertical with charge pipe, large condenser, evaporating pipe
Lifting Mode	Screw Rod Manual Lifting
Voltage (V/Hz)	220V 50/60
Sealing Mode	PTFE, fluoro Rubber Sealing
Note	Customized configuration is available

\*Warm tips:110V/60HZ is optional

## Total Parameters

Model	-2000B	-5299	-201D	-301	-501	-1002	-2002	-5002	
Evaporating Flask(L)	2L	1/24# ( 0.25-2L)	2	3	5	10	20	50	
Receiving Flask(L)	1L	0.25-1L/24#	1	2	2	5	10	20	
Rotating Motor(W)	40	30	40		180		250		
Rotating Speed(R/min)	0-120						0~90		
Water(Oil) Bath Power	1500	1500	1200	1500		3000	5000	7000/9000	
Temperature Control Range	RT ~ 99°C		RT-399°C			0-99 ( 250 ) °C			
Temperature Fluctuation(°C)	±1								
Evaporation Rate(H <sub>2</sub> O)	≥1L/h			≥1.5L/h		>3L/h	>5L/h	>9L/h	
Condenser	Standard condenser					Vertical Double Condenser			
Lifting Mode	Electric	Manual Lifting	Water(Oil) Bath Manual Lifting						
Lifting Height(mm)	0~140	0~150		0~120		0~220			
Voltage (V/Hz)	220V 50/60							380/50	
Sealing Mode	PTFE, Fluoro Rubber Sealing								



2000B



5299



201D



301



501



1002



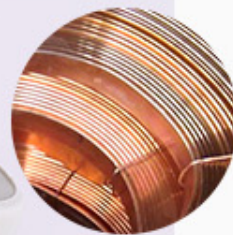
2002



5002

## FIVE CHARACTERISTICS OF STRUCTURE

### Point 1 ▶ Large Motor



1. International copper wire
2. Continuous operation and stable
3. CE Approved

Point 2 ▶

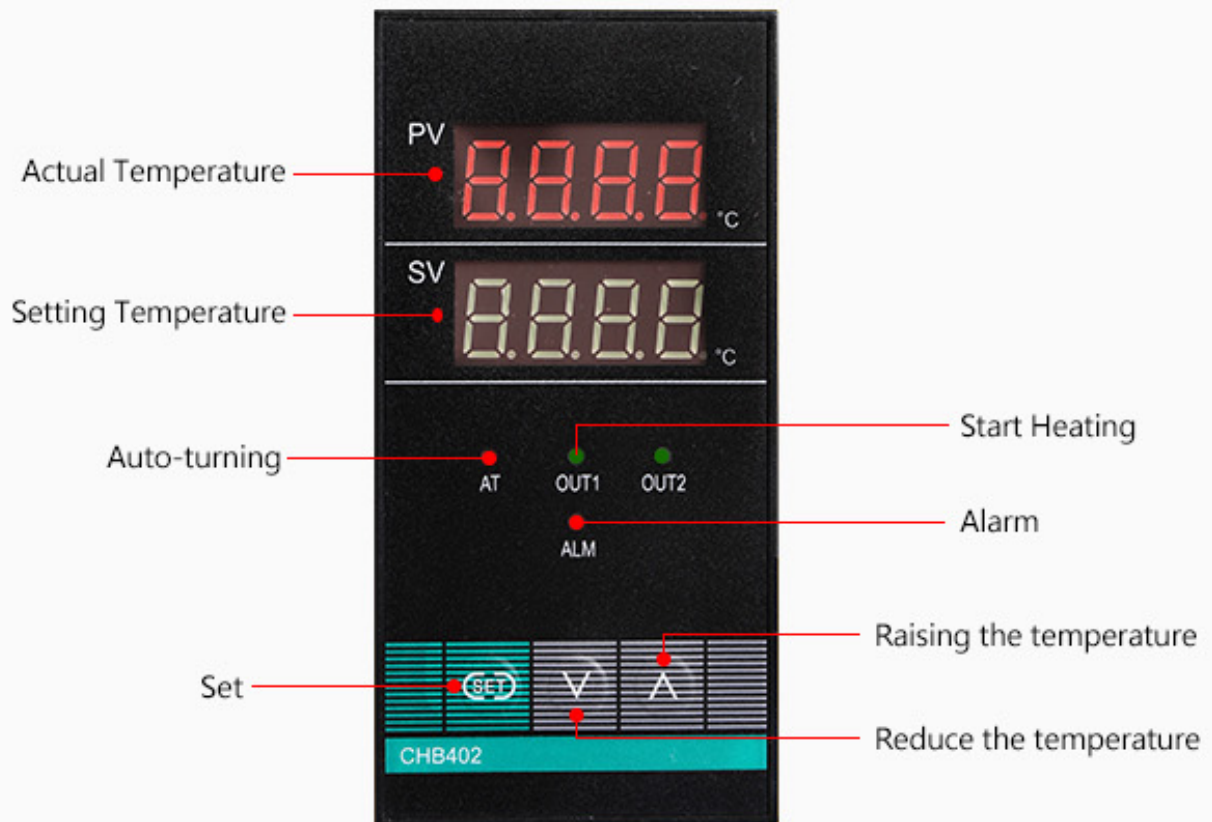
## Free Lift Heating Bath

You can adjust the height according to your requirements. Easy and convenient.



Point 3 ▶

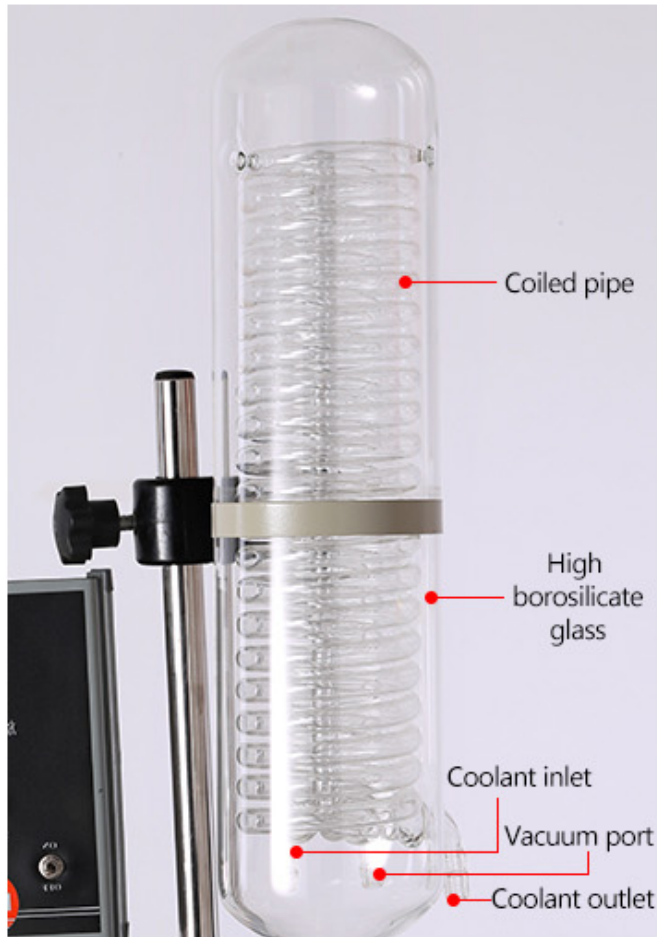
## Digital Control



More convenient More intuitive More accurate

Point 4 ▶

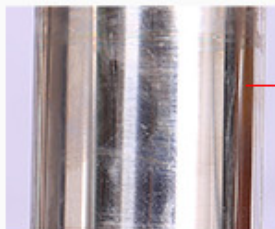
## Spiral Condenser



The inner tube is spiral which increases the length of the tube and makes cooling area larger. So the condensation would be more efficient.

Point 5 ▶

## Stainless Steel Frame



### 304 stainless steel

High temperature resistance

Corrosion resistance

Good toughness

