

FUNCTION-FIRST

PERFORMANCE

PLEASE READ BEFORE INSTALLATION: These instructions serve only as a guideline - the installation process for each vehicle may vary depending on make/year/model/trim/etc. It is the sole responsibility of the user to check for suitable product fitment prior to beginning the installation process. The user also accepts that working on or around a vehicle is an inherently dangerous activity, and as such should only be attempted by a qualified automotive technician. By installing or using any Function-First Performance product, the user assumes and accepts all risks.

INSTALLATION INSTRUCTIONS

FFP Shifter Cable Ends



TOOLS NEEDED

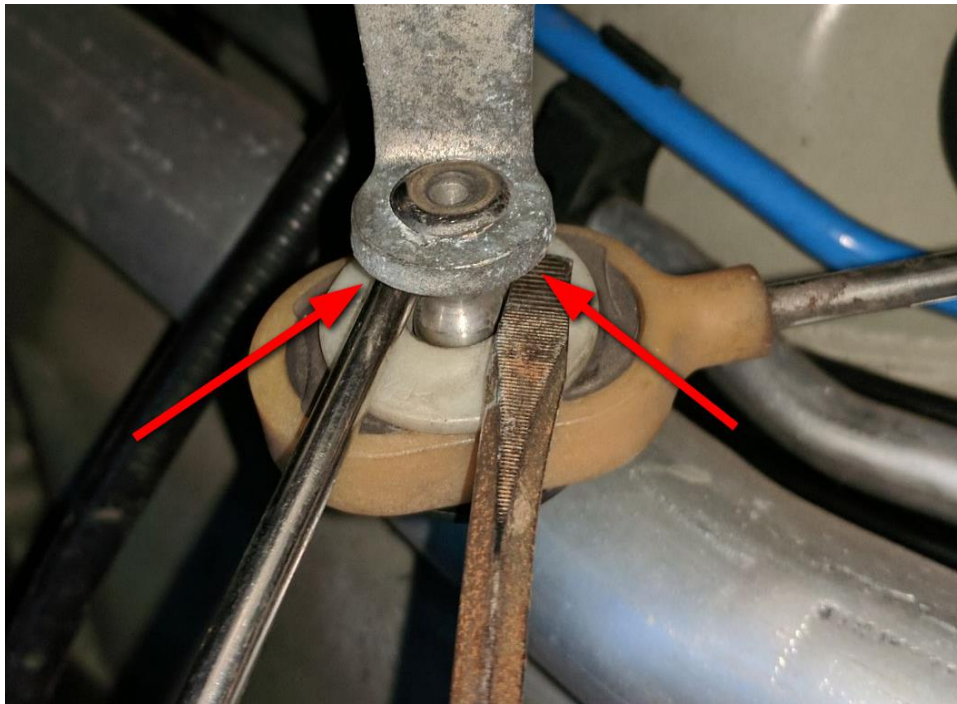
- Safety Glasses
- Torx Screwdrivers: T25, T30
- Socket: 10mm
- 2 pry bars or screwdrivers
- Diagonal Cutting Pliers (Dikes)
- Allen Keys: 2.5mm, 3mm
- Needle Nose Pliers

INSTALLATION

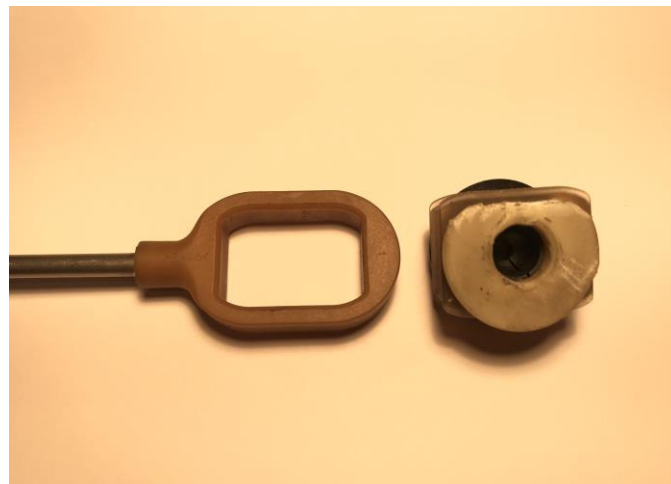
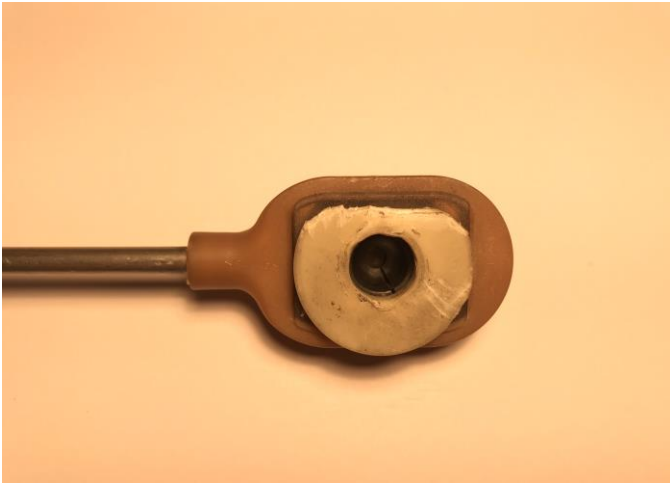
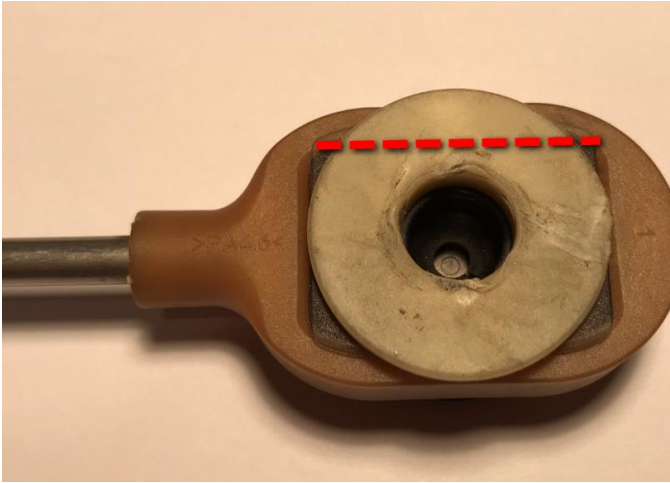
1. Shift the transmission into neutral.
2. Remove the transmission undertrays to gain access to the OEM shifter cable ends.

NOTE: On the 987 models, it may be helpful to remove the rear wheels to gain better access to the shifter cable ends.

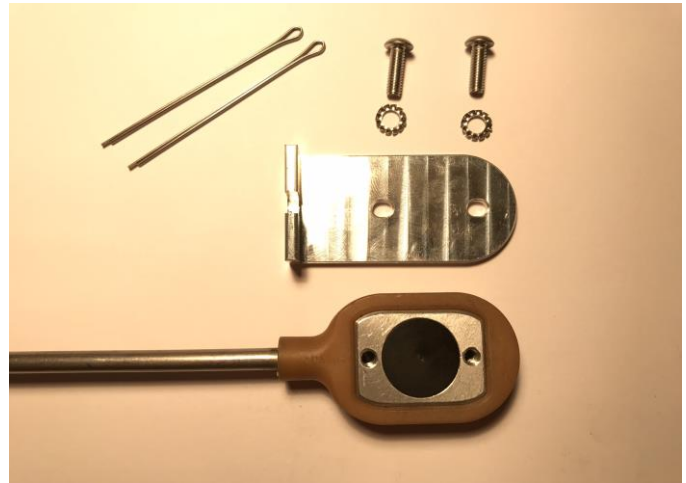
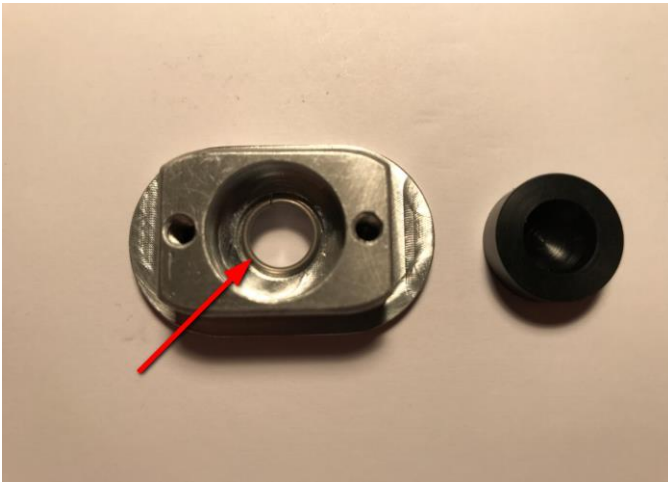
3. Use 2 pry bars or screwdrivers simultaneously to pry off the OEM cable ends - situate them on either side of the ball end of the gear selector arm and pry the ends away until released.



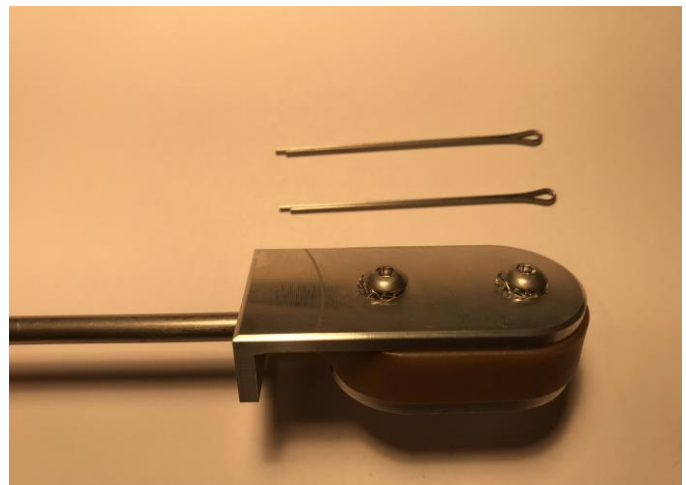
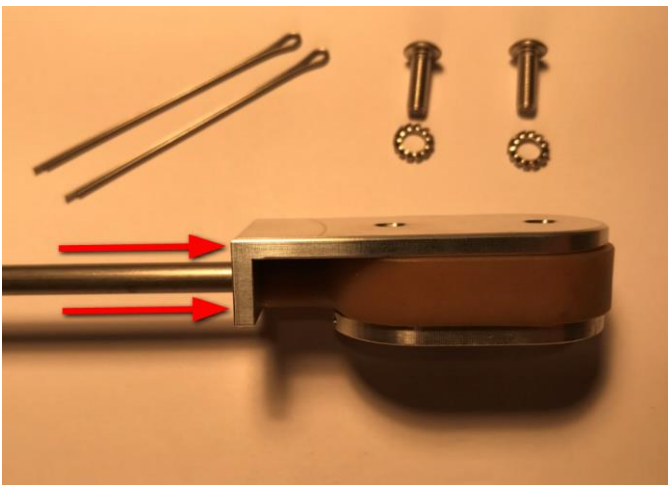
4. With the OEM cable end free from the transmission, you can now remove the internals. **Be sure to wear safety glasses.** Snip away the top portion of the inner plastic disc with the dikes (as per the dotted line), taking care to not damage the surrounding plastic frame, and push the internals through the frame. For the next steps, be sure to keep track of which side of the cable end faces the transmission.



5. If not already done so, pre-assemble the new cable ends. Place the stainless steel ring clip into the recess of the aluminum receiver, then slide the cupped side of the Delrin bushing on top. Press the completed receiver assembly into the shifter cable end frame, **FROM THE INSIDE (btwn transmission and cable) TOWARD THE OUTSIDE**.



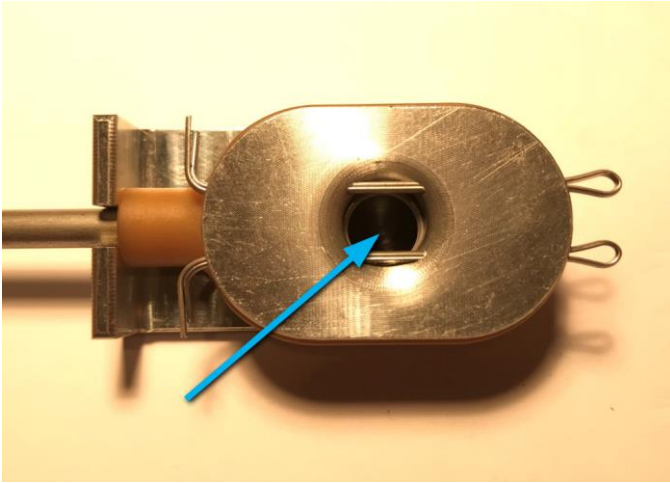
6. Slide the half-circle cutout of the top cover over the shifter cable, and butt it up against the base of the shifter cable end frame, ensuring there is no gap, while you fully tighten the 2 button head screws with locknuts.



NOTE: On the 997 CARRERA models -- the top cover for the "fore/aft" shifter cable (the cable that connects to the gear selector arm with the counterweights) needs to be installed BACKWARDS, as shown in the below picture:



7. Apply grease to the inside of the Delrin bushing (see blue arrow below).
8. Press the assembled cable end onto the ball-end of the transmission arm. Finish by inserting both cotter pins from the rear of the cable end, securing it in place by curling the ends.



9. Complete above steps for remaining cable ends.

NOTE: For the 987.1 "S" variant 6-speed models with the connecting rod that runs above the transmission, cotter pins are not necessary.

10. Prior to reinstalling the undertrays, shift through all gears to ensure every gear cleanly and fully engages.
11. Done! Enjoy!

BONUS TIP:

- Secure the plastic snap-in shifter cable holder blocks (green arrow below) to the transmission brackets with zip-ties to ensure they do not pop out.

