



FLAT 6 MOTORSPORTS

PORSCHE AFTERMARKET SPECIALISTS

SRP PEDAL INSTALLATION GUIDE

WHAT COMES IN THE BOX:



- Instruction Guide
- Hardware bag (6 bolts, 6 nuts, 8 screws, hex key)
- Pedals (Left to right - Clutch/Brake, Dead Pedal, Accelerator Pedal)

TOOLS NEEDED FOR INSTALLATION



- Drill
- Phillips Head Screwdriver
- 9mm wrench
- 3/16" Cobalt Drill Bit and 1/16" Drill Bit
- Silver Marker and Double-Sided Tape

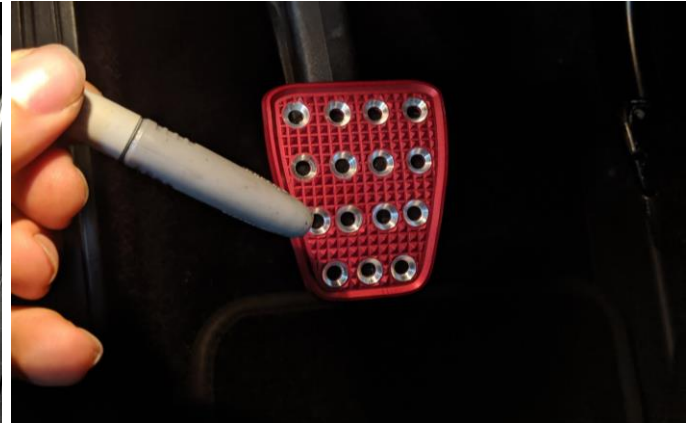
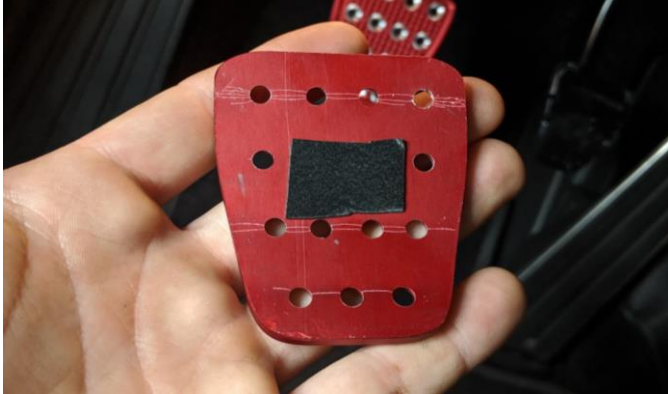
REMOVING THE OEM PLASTIC COVERS

- The original brake and clutch pedals have rubber pad covering the pedal. Remove these to expose the base to which you will mount the new pedals.
- Note - The clutch pedal is made of plastic, while the brake pedal is made of metal. The Cobalt drill bit will make it much easier drilling into the metal pedal.



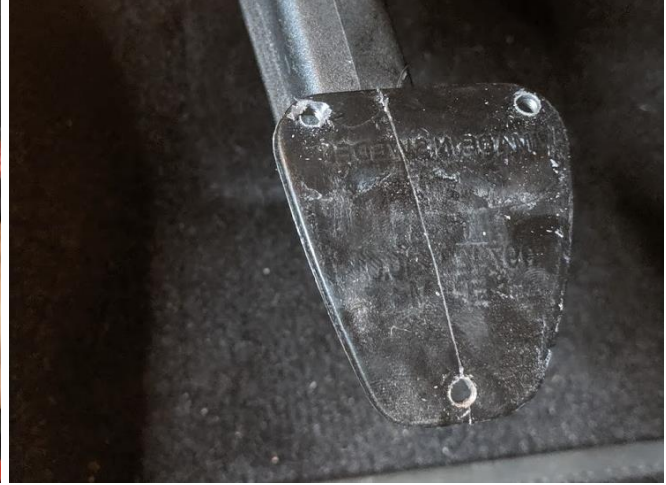
MARKING THE SCREW HOLES

- Take a bit of double-sided tape and stick it to the back of the brake/clutch pedal. Use this to position, and re-position the pedal until both are perfectly lined up. Sit in the car, look down at the pedals, and make sure both are horizontal. Then, mark your screw holes with the silver marker



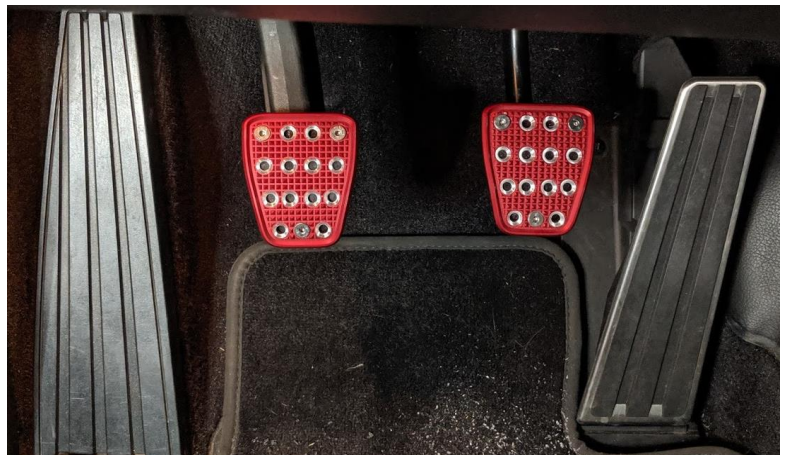
DRILLING THE HOLES, INSTALLING CLUTCH/BRAKE PEDAL

- Now that your holes are marked, use your 3/16 Drill Bit to drill the holes through the pedal. This is easily done for the plastic clutch pedal but requires more time for the metal pedal. Pro-tip - Cobalt bits work best at low speeds, going too fast will result in warping



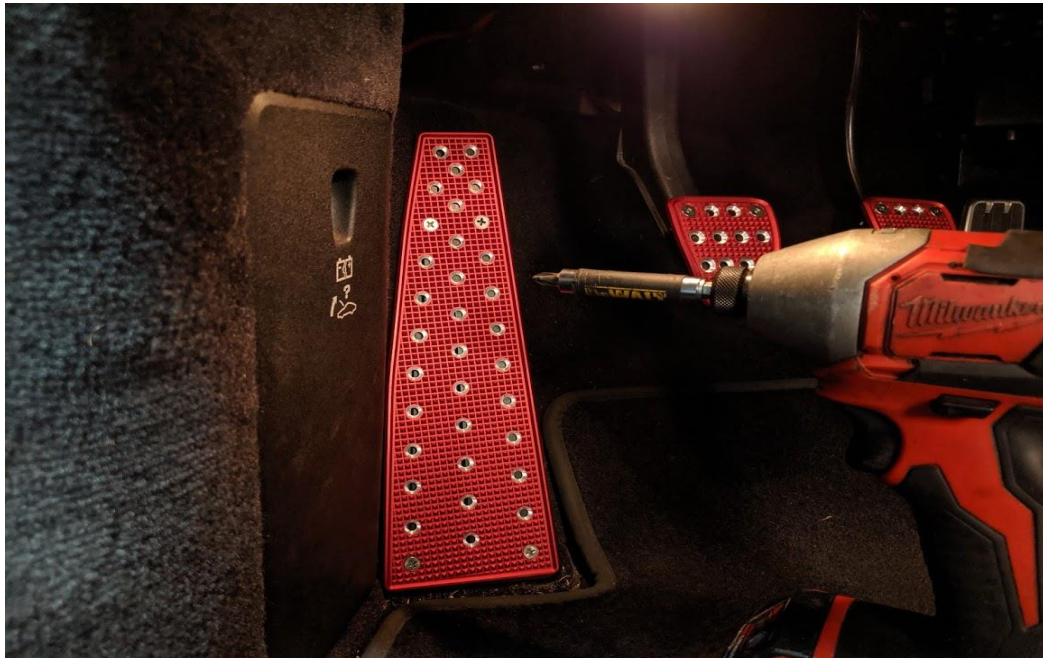
INSTALLING THE CLUTCH/BRAKE PEDAL

- Now you can place the SRP Cover back on the pedal (without the Double-Sided tape) and insert the threaded hex bolts through. Use the supplied 9mm nut on the back side to secure the pedals.



INSTALLING DEAD PEDAL / ACCELERATOR PEDAL

- In order to install these last two pieces, we'll also be using a small piece of double-sided tape to align and mark our drilling holes. Since these are both plastic, the self-tapping screws will be used. Install, mark, remove, and drill your pilot holes (using your 1/16 drill bit) to ensure that everything lines up when you install the screws.
- *Don't over-torque these screws, as you don't want to strip out the soft plastic.*



FINAL PRODUCT



For questions or more help, contact us at info@flat6motorsports.com

