

Installation
Active Suspension Control
Audi (RS) e-tron GT
Porsche Taycan

Content

1. Disclaimer	Fehler! Textmarke nicht definiert.
2. Copyright	Fehler! Textmarke nicht definiert.
3. Safety Instruction	Fehler! Textmarke nicht definiert.
4. General Information	Fehler! Textmarke nicht definiert.
5. General Remarks.....	Fehler! Textmarke nicht definiert.
6. Introduction	3
7. Front axle (Slave).....	5
8. Rear axle (Master)	7
9. Can – Bus Connetction	9

1. Disclaimer

The content listed in this manual is created with greatest possible care. The Cete Automotive GmbH assumes no responsibility for the completeness, topicality and accuracy for the listed content. The use of content takes place at the user's own risk. Therefore we - the Cete Automotive GmbH - assume no liability and responsibility for damages and defects, which arise from operation or incorrect handling and maintenance.

2. Copyright

The published contents, works and information in this manual are subject to the German copyright law. Any form of reproduction, processing/editing, distribution, copying, editing, translation, storage and any kind of use outside the limits of copyright law require the written approval of the particular. Unauthorized copying/ saving of the provided information in this manual are illegal and criminal.

3. Safety Instruction

The installation can only be fulfilled by trained specialists. The installation has to be done while the car's battery is unplugged. The usage of the Active Suspension Control is only applicable for the car models mentioned in this mounting guideline. The installation has to be done step by step as it's described in this mounting guideline. The Cete Automotive GmbH does not take responsibility for damages, caused through:

- improper installation
- the usage of unsuitable connectors
- installations in not mentioned car models

The producer reserves the right to change components without giving reasons Errors and omissions excepted.

4. General Information

We ask you to read this manual thoroughly and completely and uphold to the given instructions. During the development we focused on safety, ease of use, design, innovative development, etc, to guarantee a high quality product for the consumer. Despite the greatest care improper installation and using or incorrect operation can result in material damages. Depending on the product and its purpose it may be necessary to check the legal requirements of the country before commissioning. To receive consideration for warranty claims the product has to be send back with its original package, the proof of purchase and an error description. Please note the returns policies. The warranty regulations apply. The warranty claim and the operating permit expire through: unauthorized modification of the product, own repairing, violent impacts, improper use, opening the case.

5. General Remarks

Please note, that the Active Suspension Control is a vehicle requiring official approval product. Please register this product as soon as possible.

The Images and Content shown in this installation guide only serve as a help for you. Please remove the covers according to the repair manual of the respective manufacturer.

6. Introduction

The electronics are installed on the **underbody**, so the vehicle must be on a **lifting platform** so that you can access the connections from below and lay the cables.

Please note that all connections must click together until they are "**locked**". This is noticeable by a "**click**" noise at the connection.

Lay the cables as shown by us, the cables must be laid on the rigid elements, so that steering and other movements don't cause tension in the cable harness.

The wiring harness always has a **short** side and a **longer** side. The **shorter** side should be installed on the **passenger side (on the right** in the direction of travel).

7. Front axle (Slave)



Step 1)

Start with the installation on the front axle.

The SLAVE device must be installed here.

Open the screws of the cladding so that you can remove it or tilt it to install the electronics.



Step 2)

Locate the sensors, these are located next to the air bar. Therefore, pay close attention to the cable routing when laying.



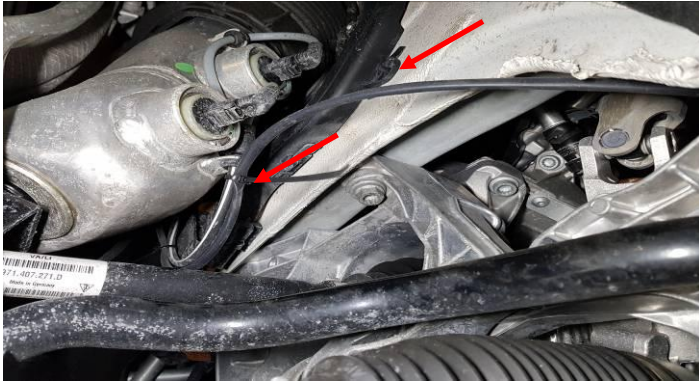
Please note our chapter 6 introduction - the short side always belongs to the right.



Step 3)

Unplug the original connections and connect them to our adapter.

To be on the safe side, secure the hanging lines with cable ties so that they cannot move outside the cladding.



Step 4)

Finally, connect the slave device and attach it under the cover.

Protect it from direct exposure to water / dirt.

Please align the device so that it points to the rear (against the direction of travel).

8. Rear axle (Master)



Step 1)

Now the installation on the rear axle follows.

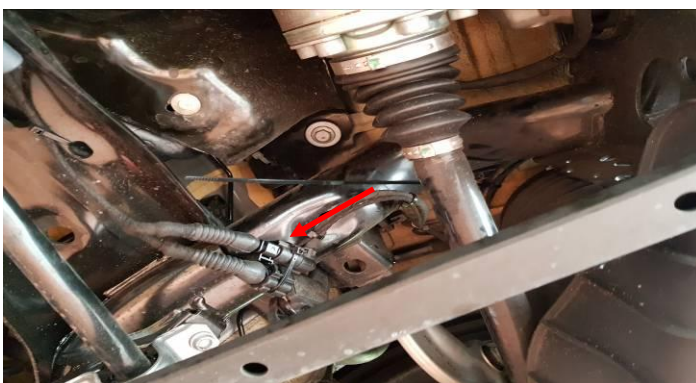
The MASTER device must be installed here.

Open the clips of the cladding so that you can remove it or tilt it to install the electronics.



Step 2)

Locate the sensors, recognizable by the black housing.



Step 3)

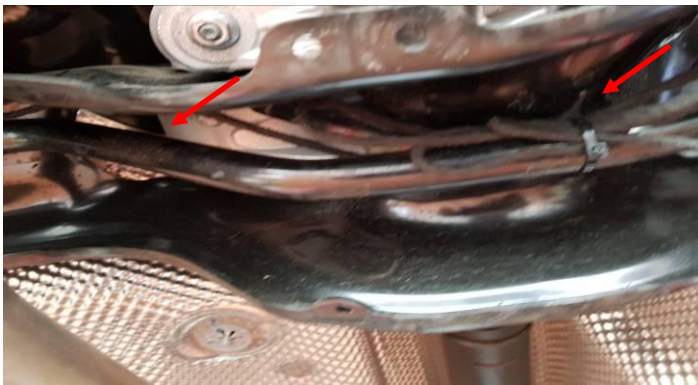
Connect the adapters as previously done for the slave device.

The short side of the wiring harness on the right (passenger side) and the longer side is routed to the left.



Step 4)

When laying, make sure that the cable is not attached to the steering rear axle.



Step 5)

Finally, connect the master device and attach it under the cover.

Protect it from direct exposure to water / dirt.

Please align the device so that it points to the front (direction of travel). (Master and slave devices should "look at" each other).

9. Can – Bus Connection



Step 1)

In the last step, the Can-Bus line must be laid inside.

It is very important that you move along the original cables as much as possible so that the cable does not come under tension or tear.



Step 2)

The Can-Bus must be laid in the "center".



Step 3)

Open the trunk and remove the bottom cover.



Step 4)

Remove the necessary screws to be able to remove the rail.



Step 5)

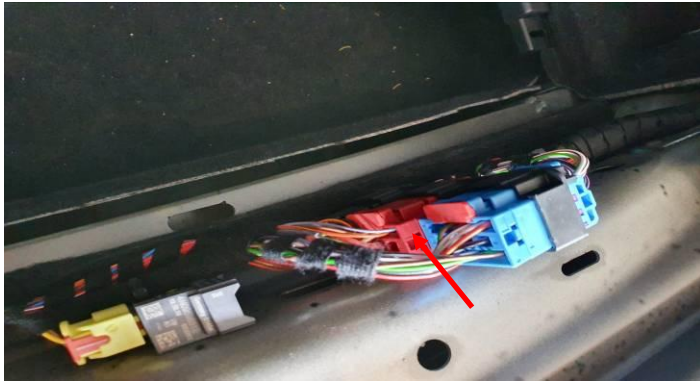
Dismantle the load compartment cover.



Step 6)

In order to get the can line inside, the grommets in the trunk floor could be used, for example.





Step 7) – CAN-BUS

Locate the CAN-BUS on the red connector.

Green = CAN HIGH

Orange / brown = CAN-LOW

Orange / black combine with green.

Orange / brown connect with orange / brown.



It is important that you press the adapter (Can-Bus connector) together with a pair of pliers so that contact is made.

Squeezing it hand-tight is unfortunately not enough.

