



INSTALLATION GUIDE

PORSCHE MACAN SIDE MARKERS

FITMENT

- 2015+ Porsche Macan (*including all variants*)

TECHNICAL HELP

If you need technical assistance or help with the installation procedure, please email info@flat6motorsports.com for immediate help.

IN THE BOX

- 1X Side Marker (Driver's Side)
- 1X Side Marker (Passenger's Side)
- 2X Amber Halogen Bulbs



TOOLS NEEDED

- T-25 Torx Bit / Driver
- Socket Wrench (if applicable)
- Flat-head screwdriver



INSTALLATION STEPS

1) Turn the steering wheel all the way to lock towards the left side. Start with the passenger's side (LHD) and locate the T-25 torx screws holding the wheel liner to the bumper cover assembly. Remove the 2 screws. It may be helpful to remove the outer screw at the bottom to allow more flex with the wheel liner.

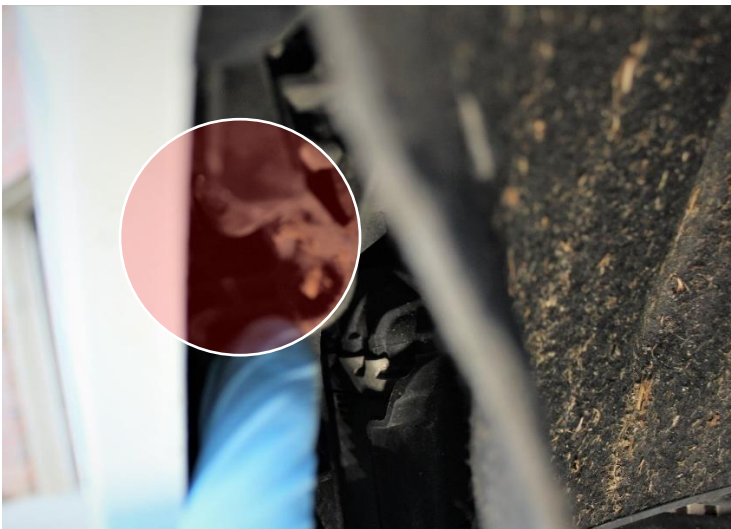


For reference to see what the torx screws look like:



2) Pull back the wheel liner from the bumper. It is easiest to start towards the top of the bumper where there is a small gap to get a finger into.

3) Use a flat-head screwdriver to pry the factory side marker loose. It is secured by a release tab, you can apply force horizontally and directly to the metal tab. It is located just above where the finger is pointing below. It is helpful to use a flashlight to locate the tab as it is recessed into the bumper a few inches. With your right hand, you can help work the side marker out once it's release tab has been released.



4) Take the factory harness socket out by turning it until it releases from the side marker housing.

5) Pull the factory halogen light bulb out from the socket and replace with the supplied amber bulb.



6) Turn the ignition to the “ON” position and make sure your lights illuminate before mounting. Insert the harness socket and turn to tighten (opposite step of removal).

7) Place the Side Marker into the bumper opening and snap into place. Once fitted, reinstall the torx screws on the wheel well liner. Turn the steering wheel the other direction to lock and repeat the same steps on the other side of the vehicle.



Installation of the Side Markers is now complete. Enjoy the cleaner look! Please contact us with any questions.



Enjoy the product? Please share your experience, pictures and videos on the MacanForum and social media! Tag us with @flat6motorsports or #flat6motorsports for a chance to win a gift card or a free product giveaway.

