



OUTDOOR TECH.

WIRED CHIPS.

UNIVERSAL

HELMET

AUDIO

Hi.



Good call on picking up the Outdoor Tech® Wired Chips®, universal wired helmet audio. Your experience of the universe will now be enhanced by our slick button controls and awesome audio quality. We created this manual so that you and your new Wired Chips® will be the best of buds. Pull up a chair, put your spectacles on, and learn a thing or two.

Kisses,



OUTDOOR TECH.

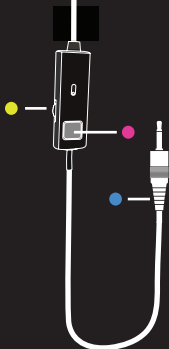
ANATOMY

LEFT EAR



RIGHT EAR

- Primary MFB
- Volume
- Secondary MFB
- 3.55 mm jack



*ODT DICTIONARY
-MFB=Main Function Button

ANATOMY (CONTINUED)



The included 3.5mm cord has two specific ends that you must connect to the Wired Chips® and your preferred audio source.

Connect the auxillary jack into the Left ear speaker.



Plug this end into the Wired Chips® port.
*You will know its the right end of the cord based on the direction of the handsfree controls.

Plug this end of the cord into your device.



*The length of the wire from the handsfree control to the end that goes into your device will be significantly longer than the other length.

The handsfree control will have the same capabilities for functions/actions as the Right ear speaker button.

CONTROLS

Wired Chips® have only one similarity to your Average Joe's headphones or earbuds; they don't need to be charged. Other than that, these aren't your mom's helmet audio.

There are two ways to control your Chips®, the most convenient and the one we recommend is through our patented on ear button control, but we like options, so there is also an in-line control (they both do the same thing).

Method 1: Use the large tactile button that is built into the left speaker, this will control everything other than volume.

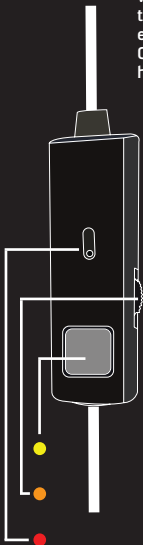
Method 2: The MFB button on the in-line control cable, same function, but smaller, harder to locate and use with gloves on, you choose.

Oh, you can control volume two ways also, on your phone or audio source device and on the roller wheel.

● Multifunction Button

● Volume wheel

● Microphone



DUAL OPTIONS



RIGHT EAR BUTTON



IN-LINE CONTROLS

Again, the choice is yours, use the primary on ear MFB button or the in-line MFB button, they function the same way.

FUNCTION

ACTION

Play	Short press once
Pause	Short press once
Raise Volume	Turn volume wheel up
Lower Volume	Turn volume wheel down
Skip Forward	Short press twice
Skip Backward	Short press three times
Answer	Short press once
Reject	Long press for 2 sec
Hang up	Short press twice
Mute	Turn volume wheel down
Siri/Voice Activation	Long press for 2 sec

*Don't worry. We believe you can handle it.

TALK



The built-in microphone on the in-line means that you can answer phone calls with your Chips®. Good for you.

The following are tips on how to use your Chips® button to speak on the telephone:

- | | |
|--|---|
| Answer a call..... | Press right ear button |
| End a call..... | Press right ear button |
| Decline a call..... | Press and hold the right ear button for two seconds |
| Make a call..... | Use your phone to dial as usual Listen & talk through the Chips® or use Siri/Voice Activation to do so. |
| Mute/cancel mute during a call..... | Turn down the volume wheel / Turn up the volume wheel |
| Volume up during a call..... | Turn up the volume wheel |
| Volume down during a call..... | Turn down the volume wheel |

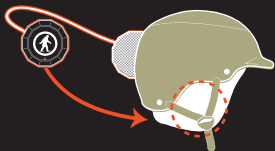
CARE & MAINTENANCE



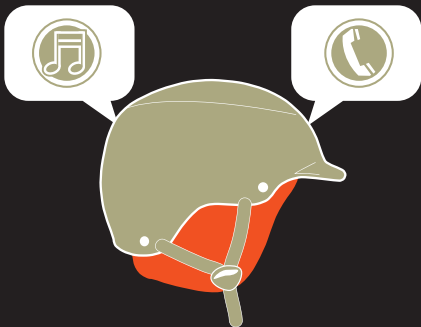
- Keep the Chips® dry
- Keep the Chips® away from direct sunlight or hot places. High temperatures will shorten the life of electronic devices, destroy the battery or distort certain plastic parts.
- Do not try to disassemble the Chips®.
- Do not let the Chips® fall onto the floor or other hard surfaces. The internal circuit board may get damaged.
- Do not use intensive chemical products or detergent to clean the product.
- Do not scratch the surface with sharp things.

WARNING: For safety reasons, some state and local laws prohibit the use of headsets when operating a bicycle. Use Chips® only for off-highway activities. Do not use Chips® at excessive volumes because it may cause permanent hearing damage.

PUT THE CHIPS IN YOUR HELMET



1. Drop the Chips® into the slots inside your helmet liner.



2. Rock out, make calls, and, you know, ski and snowboard and whatnot.

LAST NOTE



Well, we've all been there and know that this situation totally sucks.

So don't let this be you on the mountain.

Keep your hands warm and the mobile device that connects you to your mom safe and sound. Use your Chips®

DON'T BE SO ANTISOCIAL



Facebook.com/outdoortech
Twitter & Instagram: @outdoortech

Questions, comments, complaints, secret desires,
or just to say what's up: email info@outdoortech.com

K bye.



outdoortech.com

U.S. Des. Pat. No. D704,676 S.