

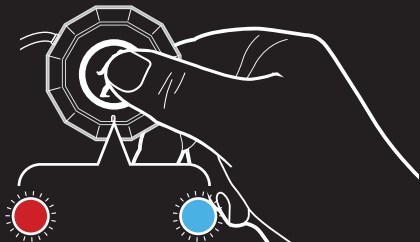
# QUICK, START.

## CHARGE

Slow down there champ, you should charge the CHIPS™ 2.0 for 2.5 hours to keep that battery going strong.

## PAIR

Hold down the right earpiece button until the light blinks red and blue alternately.



Find the CHIPS™ 2.0 in the Bluetooth manager on your smart phone, then press pair.

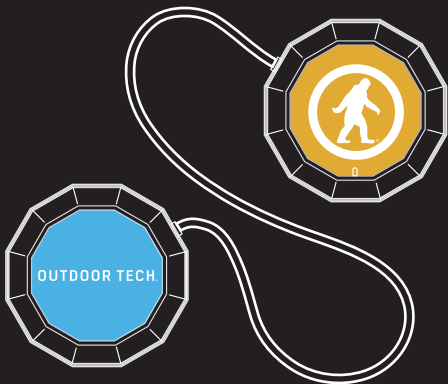
(Use the back of this card to get even smarter)

# THE BASICS.

## RIGHT EAR PIECE

**Power On:** Press and hold for 3 seconds

**Play / Pause / Answer / Hang up:** Tap once



## LEFT EAR PIECE

**Power Off:** Press and hold for 4 seconds

**Raise Volume:** Tap Twice

**Lower Volume:** Tap once

**Skip Forward:** Press for 3 seconds