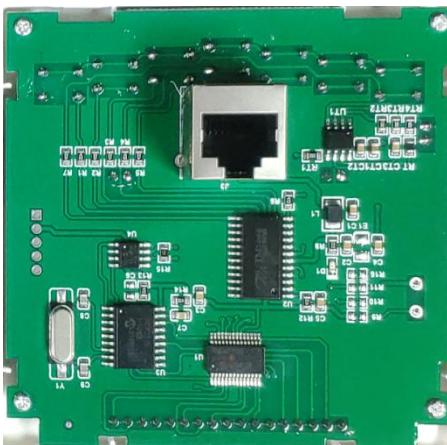
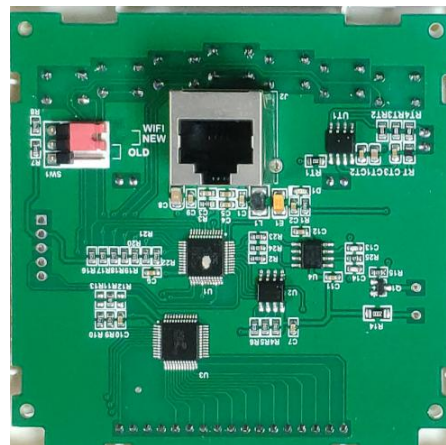


We have two optional remote controllers, Series 1 and Series 2.

	
Series 1	Series 2
Sentinel HD55 White	Sentinel HD55 White
Sentinel HD55 Blue	Sentinel HD55 Blue
×	Sentinel HD55 Gold
×	Sentinel HDi65
Sentinel HD90	Sentinel HD90
Sentinel HDi90	Sentinel HDi90
Sentinel HDi100	Sentinel HDi100
Sentinel HDi120	Sentinel HDi120
Storm SLGR 1400X	Storm SLGR 1400X



(Series 1)



(Series 2)

When the back of the controller you receive is shown in figure (Series 2), the controller you receive is Series 2.

You can switch the optional remote control by mode, which is suitable for different ALORAIR dehumidifiers.

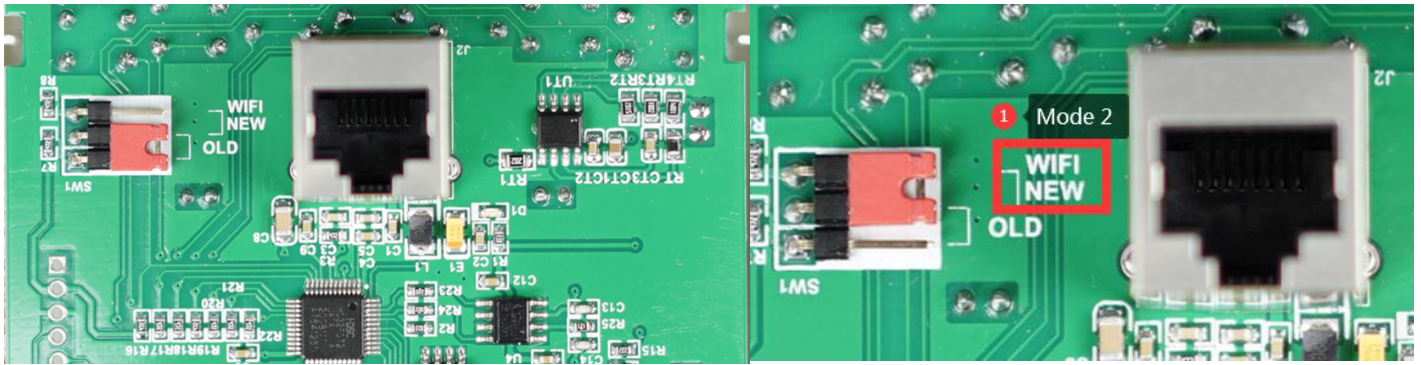
Mode 1 is suitable for the following models:

Sentinel HD55 White dehumidifier
 Sentinel HD55 Blue dehumidifier
 Sentinel HD90 dehumidifier
 Sentinel HDi90 dehumidifier
 Sentinel HDi100 dehumidifier
 Sentinel HDi120 dehumidifier

Mode 2 is suitable for the following models:

Sentinel HD55 Gold dehumidifier
 Sentinel HDi65 dehumidifier

Sentinel SLGR 1400X dehumidifier



(Mode 1)

(Mode 2)

Optional remote controller mode switching guide (Series 2)

Step 1: Pry open the cover

Step 2: Pull out the red jumper cap and connect the pin holder according to your model

For example: Sentinel HDi65 and Sentinel HD55 Gold are connected to the WIFI New header, and other models are connected to the OLD header.

Step 3: Close the back cover of the controller