

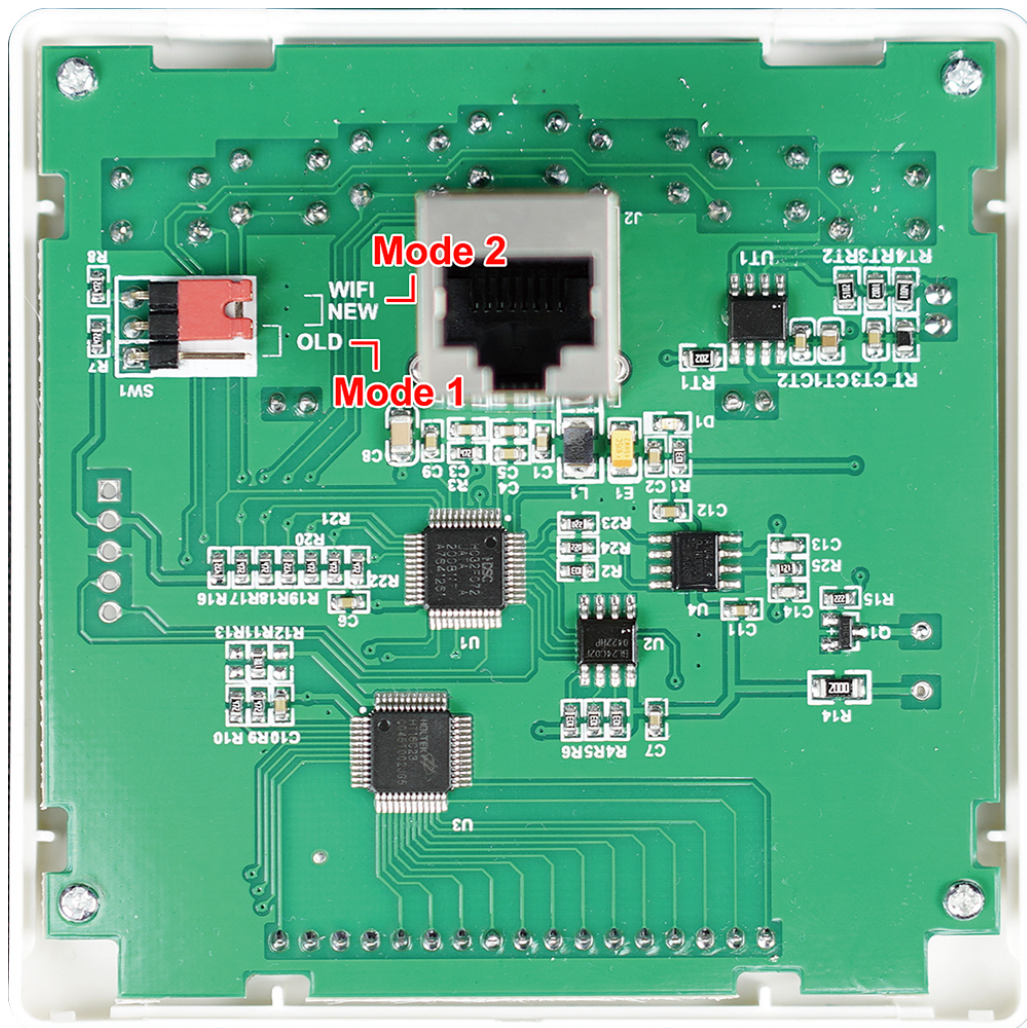
The controller can control different models of dehumidifiers in different modes

**Mode 1** is suitable for the following models:

Sentinel HD55 White dehumidifier  
Sentinel HD55 Blue dehumidifier  
Sentinel HD90 dehumidifier  
Sentinel HDi90 dehumidifier  
Sentinel HDi100 dehumidifier  
Sentinel HDi120 dehumidifier  
Sentinel SLGR 1400X dehumidifier

Mode 2 is suitable for the following models:

Sentinel HD55 Gold dehumidifier  
Sentinel HDi65 dehumidifier



### Controller mode switching guide

Step 1: Pry open the cover

Step 2: Pull out the red jumper cap and connect the pin holder according to your model

**For example:** Sentinel HDi65 and Sentinel HD55 Gold are connected to the WIFI New header, and other models are connected to the OLD header.

Step 3: Close the back cover of the controller