



Our Story

MTM Hydro, SRL was founded by the Costamagna Family in 1977 in Cherasco Italy. Scott Lindholm and Pierluigi Gallo (former President, MTM Hydro Srl.) formed a partnership creating MTM Hydro in Eden Prairie, Minnesota in 2005. The foundation of the company was based on manufacturing pressure washing equipment for OEMs and distributors. Aaron and his brothers grew up watching their father (Scott) guide the company through peaks and valleys providing many learning opportunities and experiences. As children the Lindholm Family can recall many instances where they got to spend time in the warehouse often helping (dad) with incoming and outgoing shipments. Tragedy struck in 2011 when Scott Lindholm unexpectedly passed away. Aaron (the oldest of 3) assumed the reigns as President of MTM Hydro (US).

For the next four years Aaron spent time gaining market insights and launched Veloci Performance Products, Inc. (a rebrand of Mtm Hydro USA). In 2017 Aaron Lindholm became President & CEO after purchasing the US based subsidiary from MTM Hydro SRL. "We recognize the value of premium equipment, accessories, and solutions. We want to educate people on the impact that quality equipment has on performance. We spend our time on the components that make a large difference."

The foundation of the company is rooted in quality; quality products, quality customer service, quality innovation.... Quality, quality, quality... Today the company is now poised for growth into other product lines and continues to lead the global market by raising the bar.



@MTMHydroParts



MTMHydroParts



/MTMHydroParts



www.MTMHydroParts.com

Industrial Sandblast Kit User Manual



Do not throw away after reading, keep for reference and records. Please read all instructions in this user manual.



Direct any questions to:
sales@mtmparts.com
866.686.4020

Why Sandblast?

Sandblasting is one of the most efficient ways to clean and prepare surfaces. Wet sandblasting is a dustless blasting solution. Woodworkers, machinists, auto mechanics, landscapers, metalworkers, welders and more can all use sandblasting in their work, especially when they fully understand the many ways that sandblasting can be used. Sandblasting application can vary greatly, different abrasives can be used depending on the material they are being used on. Depending on the application one may use fine or coarse sand, coal slag, steel grit, dry ice, walnut shells, crushed glass, and many other materials.

Sandblasting is great for cleaning:



Description & Specs

MTM's Industrial Sand Blast Kit provides maximum cleaning power with dustless sandblasting capabilities. Similar to the MTM Foam Cannons, these Sandblast kits use the venturi effect to draw sand through a hose where it is expelled at high speed against the cleaning surface with pressurized water. Sandblast kits are impressive cleaning devices as long as your orifice is correct and your draw hose stays dry.

Note the MTM Hydro Sandblast kits do not come with nozzles. If you have purchased a Kit and it came with nozzles, these were added by the distributor we sold the kit to. Be sure to either purchase, or use the correct sized nozzle for your machine as this will greatly impact the performance of the Industrial Sandblast kit.

- **Requires 3-8 GPM Pressure Washer**
- **Requires 3,000-5,000 PSI Pressure Washer**
- **Nozzle must be 0° Threaded nozzle fitting the specs of your machine**

Service

Service must be done exclusively by skilled workers using only original Veloci replacement parts. **WARNING:** The components need to be properly reassembled to restore to the original conditions of the product. Veloci is not responsible or liable for any loss, damage or injury, direct or consequential, arising from improper, use, reassembly or service by unskilled workers and/or users.

Warranty

MTM Hydro warrants that this product will be free from material and workmanship defects under normal use for the period of ninety (90) days. "Normal use" does not include use in excess or recommended maximum speeds, flows, pressures, vacuums, and temperatures or use requiring handling of fluids not compatible with component. Warranty does not cover freight, freezing, misapplication, or negligence damage.

Instructions

1. Install the correct nozzle into the Nozzle Holder. (A nozzle size chart can be found on our website mtmhydroparts.com/pages/nozzle-size-calculator)
2. Teflon each fitting and tighten onto the sandblast head.
3. Use a 5 gallon bucket or large container for your blasting material. Place the probe so that the end is completely submerged, leaving the air intake above the blasting material so that it can continuously draw.
4. Connect your MTM spray gun or wand with a 1/4" coupler to the 1/4" plug.
5. Connect the sand hose to the hose barb on one end and the probe on the other, using the clamps to tighten them in place.
5. Turn on your water source and pressure washer, and begin sandblasting!

Included

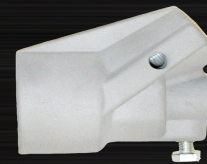
Tungsten Carbide Nozzle



Gasket



Sandblast Head



Nozzle included with select models

3/4" Hose Barb



Nozzle Holder & 1/4" Plug



Sand Hose & Probe



Hose Clamps



*Replacement parts available on our website.

Tips & Tricks

- Use the right sized nozzle!
- Keep your draw line (hose) interior dry
- Orient the sand barb (hose) to the top of the blast head so the sand drops into the chamber with the help of gravity, this will also limit the amount of water that could run down the hose if it was at the bottom.
- Once you start cleaning limit the starting and stopping as this will create valleys of settled blast media in the draw hose and create an inconsistent flow of sand when you re-start.