

MOPAR PICKUP TUBE INSTALLATION SHEET

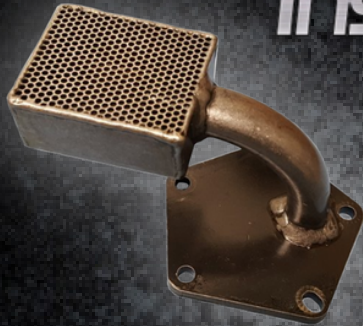


Plate Style

This pickup tube is designed to increase the volume into the pump. The M72 pump normally uses a restrictive 3/8" NPT Inlet that reduced the inlet to under 1/2". Our solution was to plug the original inlet and introduce the oil from the bottom of the pump using a 3/4" tube with no restrictions. Follow the pickup tube installation instructions below.

1. Clean the pickup tube thoroughly and inspect for any debris. Kevko pickup tubes are inspected and cleaned before packaging, however its important to repeat this process before installing.
2. Remove the 5 perimeter bolts from the oil pump and discard the cap. (Save perimeter bolts)
3. Place the Kevko pickup tube on the pump and install reusing perimeter bolts. Use a chemical lock tight when installing and torque bolts to 95 in.-lbs.
4. Using pipe joint compound, install 3/8" pipe plug into original tube inlet.
5. Install pump on motor. Torque to 35 ft.-lbs.