

Product Catalog | Volume One, Issue One



915 North Orient Street | Fairmont, Minnesota 56031

800-770-3557 | sales@kevkoracing.com

www.KevkoRacing.com



ABOUT US

Kevko Racing Oil Pans and Components has been producing quality parts for the auto racing industry since 1986. We have been responsible for providing the oil pans for a number of consistent winners in the Oval Dirt Track and Sprint Car Circuits for a number of years. With over a 30 year history of fabricating quality performance parts we have established ourselves as a premiere component manufacturer with our core product line of oil pans as well as our more recent innovations for the racing industry.

PARTS WARRANTY

Because we at Kevko have no control over the use and installation of our products, we will decide after inspection, if a defect was indicated in materials or workmanship. At that time, if applicable, we will repair or replace the part.

This warranty does not include damage to an engine or any other parts, labor, or personal injury. It is the user responsibility to judge the correct installation and use of products or have a qualified professional perform the installation.

Our return policy is 30 days after purchase, and that could incur a 15% restocking charge.

CREATING A CUSTOM OIL PAN

The best way to create a custom oil pan is to fill out the worksheet on our website and mail, fax or scan and email the completed form to Kevko Racing Oil Pans & Components. If you have any questions regarding the completion of the worksheet, please do not hesitate to Contact Us.

KEVKO RACING OIL PANS & COMPONENTS

915 North Orient Street | Fairmont, Minnesota 56031

TELEPHONE

507-238-9633 | 800-770-3557

FAX: 507-238-4190

EMAIL: sales@kevkoracing.com

TECH SUPPORT: josh@kevkoracing.com



FAQS

What stroke will your pans clear?

All SBC Kevko pans will clear a minimum 4.125" Stroke. All BBC "Stroker" Pans will clear a minimum 4.25" Stroke. All other pans including Ford and Mopar will clear a minimum 4.125" Stroke also. However some pans may need minor modifications to the windage tray and/or scraper.

What modifications do the pouch pans need for a block with splayed caps?

The 1096, 1097S and all "Pouch Pans" use a scraper that may need to be notched to fit splayed caps. Check all your clearances before installing.

Upon the arrival of my Kevko Pan, the bolt holes seem to be a skewed from the block. What causes this?

While every pan at Kevko is checked on a block for proper alignment, in time, due to the amount of welding, shipping and handling of the product, some tend to twist. To properly realign the pan use a tape measure and measure diagonally from each of the 2 end caps. The measurement should be the same in both directions. If the pan is off, use a long bar clamp, port-a-power, or jack to bring back to square. It is not uncommon to have to sometimes use a mallet to move the pans just right. They are high performance and built for the stress of racing. They are built to take some abuse.

The only exception is on a Ford 2300 pan. To bring the pan to square test fit on the block until your holes are all aligned.

What should the clearance be between the pan and the pickup tube?

Before installing the pan, using children's play dough, grease or some type of soft material, place on top of the pickup tube and set the pan down. Measure the gap of grease. It should measure between 1/4" - 3/8".

When I order my new Kevko Pan what color will it be?

The color of the pan on the website typically denotes the color of what it should be. All pans painted are done in house and all pans zinc plated are shipped out for plating. If the pan is out of stock, or ordering a custom pan, there may be up to a 1 month wait to get the pan zinc plated. If you are in a hurry for it, we can ship it to you painted black to speed up the process. If you have decided that you will paint it another color to match your project, we can send the pan out to you in raw form, so you may do so.

Is plating vs. painting less money?

The cost between plating and painting is the same; the advantage to paint is that you may receive it much sooner without waiting for it to go to plating.

My sanctioning body requires a 1" inspection plug- do you install them?

Yes, any pan that we build may have an inspection plug installed. Specify on your order that you would like it. We also sell inspection plug kits for you to install if you have already purchased a pan. The cost to add an inspection plug to your pan is \$12.00.



FAQS Continued

I would like to run oil drain backs in my engine.

Do you offer pans with drain back fittings?

Yes, we can install drain backs into any pan using any fitting style you need.

Do Kevko oil pans fit any starter?

No, our pans with the power pouch will not clear a high torque starter without the gear reduction. All pans will accept a mini starter, and we do stock the Proform starter.

What style big block pans do you offer?

We stock both cores for the Gen. IV big block with the thick seals and also the newer style Gen. V with the thin seals for the one piece crank seal.

Can I order a Ford front sump with a windage tray?

Unfortunately no, the Ford front sumps are too close to the crank that there is no room left in the pan for the windage tray. You may still run the Ford factory windage tray.

I purchased a Kevko product that I have now decided not to use. Can I return it?

Any product that has been purchased from us in the past 30 days can be returned. Upon arrival of your product, we will inspect for any damage. If the product is damaged we will return it back to you at your cost of the shipping. If the packaging of the product is deemed unusable, you will be charged a 15% restocking fee.

Can I get better appearing welds on a steel pan, for instance for my show car?

We can tig weld any steel pan and the additional cost will usually vary between \$75.00 and \$150.00.

Will the Kevko Ford pans clear the 4 bolt rear mains?

Yes, our pans can be built to clear the 4 bolt rear mains, but we need to know that when the pan is ordered, so that we can add the proper clearances during production. Call for current pricing on this option.

Do you offer gift cards?

We do offer gift cards, or gift certificates available by contacting us at 800-770-3557.

How do I order a pan for custom application?

The best way to have a custom pan built is by the customer providing a sketch with the dimensions, fitting locations, depth, kick outs, etc that will work for their application. A lot of this information can also be taken over the phone or email or by sending pictures of the project in the planning and production stages.

The best way to create a custom oil pan is to fill out the worksheet provided below and mail, fax or scan and email the completed form to Kevko Racing Oil Pans & Components. If you have any questions regarding the completion of the worksheet, please do not hesitate to Contact Us.



TABLE OF CONTENTS

SMALL BLOCK CHEVY STREET/STRIP OIL PANS	6
LS CHEVY OIL PANS.....	12
SMALL BLOCK CHEVY CIRCLE TRACK OIL PANS	16
BIG BLOCK CHEVY OIL PANS	26
CHEVY 4.3L OIL PANS	29
FORD 302/351W STREET/STRIP/ROAD RACE OIL PANS.....	30
FORD 351C STREET/STRIP/ROAD RACE OIL PANS	35
FORD 302/351W CIRCLE TRACK OIL PANS	37
FORD 351C CIRCLE TRACK OIL PANS	40
FORD 2300 OIL PANS	42
FORD BIG BLOCK OIL PANS	45
FORD 4.6/5.4 OIL PANS.....	48
MOPAR OIL PANS	49
PONTIAC/OLDS OIL PANS.....	55
SUZUKI GSXR OIL PAN and WATER NECK.....	57
DRY SUMP OIL PANS	58
INDUSTRIAL OIL PANS	61
OIL PUMP PICKUP TUBES.....	62
VALVE COVERS.....	76
VALVE COVER ACCESSORIES	79
TIMING CHAIN & ACCESSORIES	80
ENGINE ACCESSORIES	81
TANKS	83
TRANSMISSION & REAR END FILL KITS	85
EVAC & BREATHER KITS.....	86
TOOLS	88
TRAILER & GARAGE ACCESSORIES	89
ACCESS PANELS	94
RADIATORS and MOD RODS.....	95

WET SUMP CHEVY: STREET STRIP PANS



1050 Stock Replacement Pan

Stock appearing steel oil pan. Solid steel antioil slosh tray, clears 4.125" Stroke.

Pan Depth: 7-1/2"

Pan Capacity: 4 Quarts (3.78 Liters)

System Capacity: 5 Quarts (4.73 Liters)

- 1957-1979 Left Dipstick,
2-Piece Seal **PN# 1050**
- 1980-1985 Right Dipstick,
2-Piece Seal **PN# 1050RH**
- 1985 and up Right Dipstick,
1-Piece Seal **PN# 1050NRH**

Oil Pump	Pickup Dia.	Kevko Pickup Tube
M55, M55A, 10553	5/8"	1001-1
M155, 10554	3/4"	1001-1-3/4
M55HV, 10550	5/8"	1001
M155HV, 10551	3/4"	1001-3/4
10555, 10552	3/4" Bolt On	1001-10555

1069 Nova Street Pan (Chevy II)

Shallowest Chevy II / Nova pan on the market. Clears any aftermarket exhaust and filter. Fits most stock starters, fits all mini starters. Clears 4.125 Stroke. Full Length aluminum windage tray. Fits 1962-67 Chevy II & Nova

Pan Depth: 7-1/2"

Pan Capacity: 5 Quarts (4.7 Liters)

System Capacity: 6 Quarts (5.7Liters)

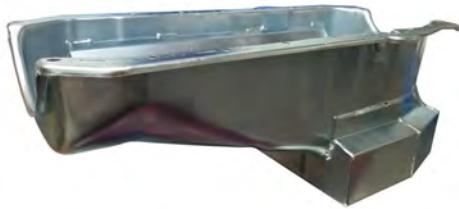
Description: 6.5" Long, 11.5" Wide, 7.5" Deep Sump

- 1957-1979 Left Dipstick,
2-Piece Seal **PN# 1069**
- 1980-1985 Right Dipstick,
2-Piece Seal **PN# 1069RH**
- 1985 and up Right Dipstick,
1-Piece Seal **PN# 1069NRH**

Oil Pump	Pickup Dia.	Kevko Pickup Tube
M55, M55A, 10553	5/8"	1001-1
M155, 10554	3/4"	1001-1-3/4
M55HV, 10550	5/8"	1001
M155HV, 10551	3/4"	1001-3/4
10555, 10552	3/4" Bolt On	1001-10555

*Note: All of our Chevy Pans take the thick front seal gasket.

WET SUMP CHEVY: STREET STRIP PANS



1070 Chevrolet Street/Strip Pan

Fits most chassis (except 1962-'67 Chevy II, V8 Vega and Monza). Clears stock and aftermarket exhaust. Clears 4.125" Stroke. Street/Strip style gating assembly. Crank Scraper and removable aluminum tray isolates oil in sump from the crankshaft.

Pan Depth: 8"

Pan Capacity: 6 Quarts (5.7Liters)

System Capacity: 7 Quarts (6.6 Liters)

Description: 9" Long, 10.5" Wide, 8" Deep Sump

- 1957-1979 Left Dipstick,
2-Piece Seal **PN# 1070**
- 1980-1985 Right Dipstick,
2-Piece Seal **PN# 1070RH**
- 1985 and up Right Dipstick,
1-Piece Seal **PN# 1070NRH**

Oil Pump	Pickup Dia.	Kevko Pickup Tube
M55, M55A, 10553	5/8"	1004-1
M155, 10554	3/4"	1004-1-3/4
M55HV, 10550	5/8"	1004
M155HV, 10551	3/4"	1004-3/4
10555, 10552	3/4" Bolt On	1004-10555

1072 Chevrolet Box Style Drag Pan

Box Style Chevrolet Small Block / Drag Pan, 8" deep, full length windage tray, plated finish. This pan has a 10 quart capacity and uses a mini-starter. The stock dipstick can be used through the hole in the windage tray to the block.

Pan Depth: 8"

Pan Capacity: 9 Quarts (8.5 Liters)

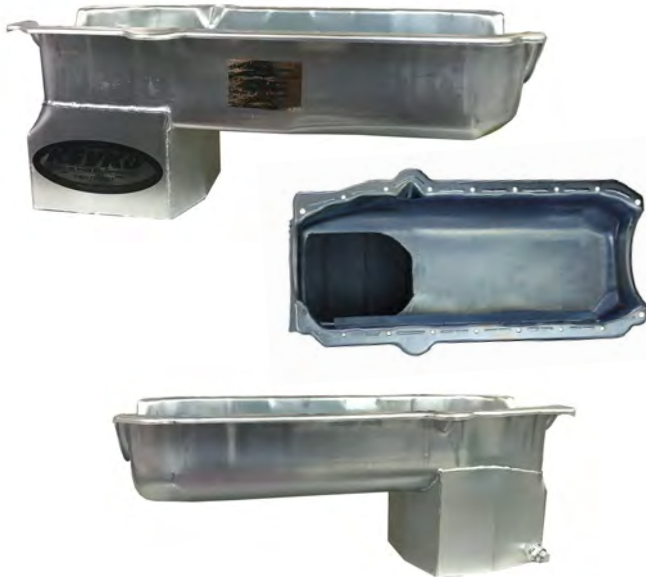
System Capacity: 10 Quarts (9.5 Liters)

- 1957-1979 Left Dipstick,
2-Piece Seal **PN# 1072**
- 1980-1985 Right Dipstick,
2-Piece Seal **PN# 1072RH**
- 1985 and up Right Dipstick,
1-Piece Seal **PN# 1072NRH**

Oil Pump	Pickup Dia.	Kevko Pickup Tube
M55, M55A, 10553	5/8"	1004-1
M155, 10554	3/4"	1004-1-3/4
M55HV, 10550	5/8"	1004
M155HV, 10551	3/4"	1004-3/4
10555, 10552	3/4" Bolt On	1004-10555

**Note: All of our Chevy Pans take the thick front seal gasket.*

WET SUMP CHEVY: STREET STRIP PANS



1073 Chevrolet S-10 V8 Pan

S-10 Chevrolet V-8 Pan, 8 1/2" deep, 7 1/2" long, plated finish. This pan has a 5 quart capacity. crank scraper and will work with 4 wheel drive and a stock dipstick.

Pan Depth: 8-1/2"

Pan Capacity: 5 Quarts (4.7 Liters)

System Capacity: 6 Quarts (5.7 Liters)

1957-1979 Left Dipstick,
2-Piece Seal **PN# 1073**

1980-1985 Right Dipstick,
2-Piece Seal **PN# 1073RH**

1985 and up Right Dipstick,
1-Piece Seal **PN# 1073NRH**

Oil Pump	Pickup Dia.	Kevko Pickup Tube
M55, M55A, 10553	5/8"	1016-1
M155, 10554	3/4"	1016-1-3/4
M55HV, 10550	5/8"	1016
M155HV, 10551	3/4"	1016-3/4
10555, 10552	3/4" Bolt On	1016-10555

1074 Chevrolet Steel Hot Rod Pan

Pan Depth: 7"

Pan Capacity: 5 Quarts (4.7 Liters)

System Capacity: 6 Quarts(5.7 Liters)

1957-1979 Left Dipstick,
2-Piece Seal **PN# 1074**

1980-1985 Right Dipstick,
2-Piece Seal **PN# 1074RH**

1985 and up Right Dipstick,
1-Piece Seal **PN# 1074NRH**

Oil Pump	Pickup Dia.	Kevko Pickup Tube
M55, M55A, 10553	5/8"	1002
M155, 10554	3/4"	1002-3/4
M55HV, 10550	5/8"	1009
M155HV, 10551	3/4"	1009-3/4
10555, 10552	3/4" Bolt On	1009-10555

**Note: All of our Chevy Pans take the thick front seal gasket.*



WET SUMP CHEVY: STREET STRIP PANS



1075 Aluminum Hot Rod Pan

7" deep fabricated aluminum oil pan.

Does not use standard dipstick.

Pan Depth: 7"

Pan Capacity: 5 Quarts (4.7 Liters)

System Capacity: 6 Quarts (5.7 Liters)

- 1957-1979 Left Dipstick,
2-Piece Seal **PN# 1075**
- 1980-1985 Right Dipstick,
2-Piece Seal **PN# 1075RH**
- 1985 and up Right Dipstick,
1-Piece Seal **PN# 1075NRH**

Oil Pump	Pickup Dia.	Kevko Pickup Tube
M55, M55A, 10553	5/8"	1002
M155, 10554	3/4"	1002-3/4
M55HV, 10550	5/8"	1009
M155HV, 10551	3/4"	1009-3/4
10555, 10552	3/4" Bolt On	1009-10555



1079 Vega/Monza Pan

Will Clear 4" Stroke

Pan Depth: 8"

Pan Capacity: 5 Quarts (4.7 Liters)

System Capacity: 6 Quarts (5.7 Liters)

- 1957-1979 Left Dipstick,
2-Piece Seal **PN# 1079**
- 1980-1985 Right Dipstick,
2-Piece Seal **PN# 1079RH**
- 1985 and up Right Dipstick,
1-Piece Seal **PN# 1079NRH**

Oil Pump	Pickup Dia.	Kevko Pickup Tube
M55, M55A, 10553	5/8"	1004-1
M155, 10554	3/4"	1004-1-3/4
M55HV, 10550	5/8"	1004
M155HV, 10551	3/4"	1004-3/4
10555, 10552	3/4" Bolt On	1004-10555

*Note: All of our Chevy Pans take the thick front seal gasket.

WET SUMP CHEVY: STREET STRIP PANS



1091-RR Chevrolet Road Race Pan

This road race pan is 7 1/2" deep, 9 1/2" long, and 13 1/2" wide with gating for right and left turns.

Pan Depth: 7-1/2"

Pan Capacity: 6 Quarts (5.7 liters)

System Capacity: 7 Quarts (6.6 Liters)

1957-1985 Right or Left Dipstick,

2-Piece Seal **PN# 1091-RR**

1986 and up Right Dipstick,

1-Piece Seal **PN# 1091-RRNRH**

Oil Pump

M55, M55A, 10553
M155, 10554
M55HV, 10550
M155HV, 10551
10555, 10552

Pickup Dia.

5/8"
3/4"
5/8"
3/4"
3/4" Bolt On

Kevko Pickup Tube

1001-1
1001-1-3/4
1001
1001-3/4
1001-10555

1092-RR 6.5" Chevrolet Sportsman Pan

Road Race pan 6.5" Deep

Pan Depth: 6.5"

Pan Capacity: 5 Quarts (4.7 Liters)

System Capacity: 6 Quarts(5.7 Liters)

1957-1985 Right or Left Dipstick,

2-Piece Seal **PN# 1092-RR**

1986 and up Right Dipstick,

1-Piece Seal **PN# 1092-RRNRH**

Oil Pump

M55, M55A, 10553
M155, 10554

Pickup Dia.

5/8"
3/4"

Kevko Pickup Tube

1006.5-RR
1006.5-3/4-RR

*Note: All of our Chevy Pans take the thick front seal gasket.

WET SUMP CHEVY: STREET STRIP PANS



1092-RR Chevrolet Road Race Pan

This road race pan is 7" deep with a louvered windage tray and gating for right and left turns. This pan has an 8 quart capacity.

Pan Depth: 7"

Pan Capacity: 7 Quarts (6.6 Liters)

System Capacity: 8 Quarts (7.6 Liters)

- 1957-1985 Right or Left Dipstick,
2-Piece Seal **PN# 1092-RR**
- 1986 and up Right Dipstick,
1-Piece Seal **PN# 1092-RRNRH**

Oil Pump	Pickup Dia.	Kevko Pickup Tube
M55, M55A, 10553	5/8"	1002
M155, 10554	3/4"	1002-3/4
M55HV, 10550	5/8"	1009
M155HV, 10551	3/4"	1009-3/4
10555, 10552	3/4" Bolt On	1009-10555

2001 Chevrolet Stock Appearing Pan

Stock appearing steel oil pan. 2 gates, crank scraper, and a removable tray.

Pan Depth: 7-1/2"

Pan Capacity: 4 Quarts (3.78 Liters)

System Capacity: 5 Quarts (4.73 Liters)

WILL NOT WORK WITH STOCK STYLE PICKUPTUBE

1" Inspection Fitting Installation Available

- 1957-1979 Left Dipstick,
2-Piece Seal **PN# 2001**
- 1980-1985 Right Dipstick,
2-Piece Seal **PN# 2001RH**
- 1986 and up Right Dipstick,
1-Piece Seal **PN# 2001NRH**
- 1957-1979 Left Dipstick,
2-Piece Seal w/1" Insp. Fitting **PN# 2001ISP**
- 1980-1985 Right Dipstick,
2-Piece Seal w/1" Insp. Fitting **PN# 2001RHISP**
- 1986 and up Right Dipstick,
1-Piece Seal w/1" Insp. Fitting **PN# 2001NRHISP**

Oil Pump	Pickup Dia.	Kevko Pickup Tube
M55, M55A, 10553	5/8"	1001-1
M155, 10554	3/4"	1001-1-3/4
M55HV, 10550	5/8"	1001
M155HV, 10551	3/4"	1001-3/4
10555, 10552	3/4" Bolt On	1001-10555

*Note: All of our Chevy Pans take the thick front seal gasket. ADD ISP to Part Number to include 1" Inspection Fitting installed

LS CHEVY PANS & KITS



LS 102 Dry Sump

Standard LS Dry Sump Pan

3" Deep

RH Exit #12 (Select number of Exits)

Availabe with 2, 3 and 4 Exits.

LS F-BODY Kit

Off Road/Road Race 6.5" Deep

Designed for the F-Body but primarily used in the Off-Road Racing world. Features a Diamond gate design that forces oil through the center assembly regardless the angle or direction of the vehicle, for excellent oil control to the pick-up tube. Must have for any Rock Crawler or Off Road LS project!

Pan Depth: 6.5"

Pan Capacity: 7.5 Quarts (5.7 Liters)

System Capacity: 8.5 Quarts (6.6 Liters)

Description: 11" Long, 8-3/8" Wide, 6.5" Deep Rear Sump. 1-3/4" Front Depth.

Kit Includes:

LS103-6.5 5" Pickup Tube With New O-ring
 K128 Kevko Dipstick
 K137 LS Oil Pan Bolt Kit
 K129 Remote Filter Adapter
 51515 Wix Oil Filter
 K123 10' Foot of Parker High Temp Hose
 K132, K133, K134 #10 Push Lock Fitting Options (4 Required)
 OS30963 LS Victor Reinz Oil Pan Gasket
 KT1 Kevko T-Shirt

LS CHEVY PANS & KITS



LS1001 Hotrod Street/Strip 5" Deep

Designed to be a good, non-hardcore street/strip oil pan.

Pan Depth: 5"

Pan Capacity: 6 Quarts (5.7 Liters)

System Capacity: 7 Quarts (6.6 Liters)

Description: 9" Long, 11.5" Wide, 5" Deep Rear Sump. 1-3/4" Front Depth.

K137 Bolt kit and K128 are included with the purchase of the Pan. You will need to purchase a Kevko pickup tube, as well as any other accessories listed below that you will need to complete your install.

LS Hotrod KIT Street/Strip 5" Deep

Designed to be a good, non-hardcore street/strip oil pan.

Pan Depth: 5"

Pan Capacity: 6 Quarts (5.7 Liters)

System Capacity: 7 Quarts (6.6 Liters)

Description: 9" Long, 11.5" Wide, 5" Deep Rear Sump. 1-3/4" Front Depth.

Kit Includes:

LS102 5" Pickup Tube With New O-ring
 K128 Kevko Dipstick
 K137 LS Oil Pan Bolt Kit
 K129 Remote Filter Adapter
 51515 Wix Oil Filter
 K123 10' Foot of Parker High Temp Hose
 K132, K133, K134 #10 Push Lock Fitting Options (4 Required)
 OS30963 LS Victor Reinz Oil Pan Gasket
 KT1 Kevko T-Shirt

LS-1092 Circle Track 5" Deep

Designed using the same specifications as our standard 1092. Built with exceptional oil control using complex gating and baffling. Was designed strictly for circle track racing.

Pan Depth: 5"

Pan Capacity: 6 Quarts (5.7 Liters)

System Capacity: 7 Quarts (6.6 Liters)

Description: 10" Long, 13.5" Wide, 5" Deep Rear Sump. 1-3/4" Front Depth.

LS-1092 KIT Circle Track 5" Deep

Designed using the same specifications as our standard 1092. Built with exceptional oil control using complex gating and baffling. Was designed strictly for circle track racing.

Pan Depth: 5"

Pan Capacity: 6 Quarts (5.7 Liters)

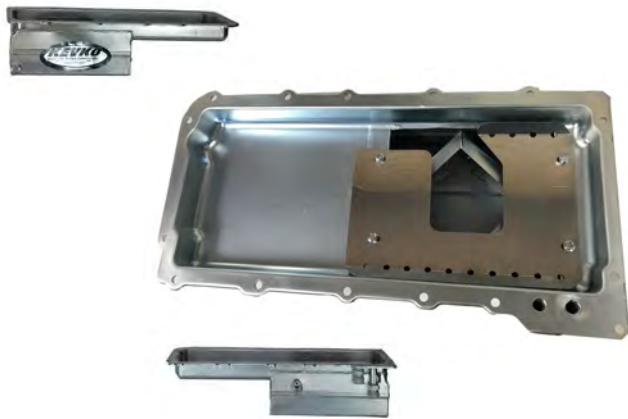
System Capacity: 7 Quarts (6.6 Liters)

Description: 10" Long, 13.5" Wide, 5" Deep Rear Sump. 1-3/4" Front Depth.

Kit Includes:

LS-100 5" Pickup Tube With New O-ring
 K128 Kevko Dipstick
 K137 LS Oil Pan Bolt Kit
 K129 Remote Filter Adapter
 51515 Wix Oil Filter
 K123 10' Foot of Parker High Temp Hose
 K132, K133, K134 #10 Push Lock Fitting Options (4 Required)
 OS30963 LS Victor Reinz Oil Pan Gasket
 KT1 Kevko T-Shirt

LS CHEVY PANS & KITS



LS1002 F-Body Off Road/Road Race 5" Deep

Designed for the F-Body but primarily used in the Off-Road Racing world. Features a Diamond gate design that forces oil through the center assembly regardless the angle or direction of the vehicle, for excellent oil control to the pick-up tube. Must have for any Rock Crawler or Off-Road LS project!

Pan Depth: 5"

Pan Capacity: 6 Quarts (5.7 Liters)

System Capacity: 7 Quarts (6.6 Liters)

Description: 11" Long, 8-3/8" Wide, 5" Deep Rear Sump. 1-3/4" Front Depth.

LS1002 F-Body KIT

Off Road/Road Race 5" Deep

Designed using the same specifications as our standard 1092. Built with exceptional oil control using complex gating and baffling. Was designed strictly for circle track racing.

Pan Depth: 5"

Pan Capacity: 6 Quarts (5.7 Liters)

System Capacity: 7 Quarts (6.6 Liters)

Description: 10" Long, 13.5" Wide, 5" Deep Rear Sump. 1-3/4" Front Depth.

Kit Includes:

LS103-5 5" Pickup Tube With New O-ring
 K128 Kevko Dipstick
 K137 LS Oil Pan Bolt Kit
 K129 Remote Filter Adapter
 51515 Wix Oil Filter
 K123 10' Foot of Parker High Temp Hose
 K132, K133, K134 #10 Push Lock Fitting Options (4 Required)
 OS30963 LS Victor Reinz Oil Pan Gasket
 KT1 Kevko T-Shirt

LS1003 F-BODY

Off Road/Road Race 6.5" Deep

Designed for the F-Body but primarily used in the Off-Road Racing world. Features a Diamond gate design that forces oil through the center assembly regardless the angle or direction of the vehicle, for excellent oil control to the pick-up tube. Must have for any Rock Crawler or Off Road LS project!

Pan Depth: 6.5"

Pan Capacity: 7.5 Quarts (5.7 Liters)

System Capacity: 8.5 Quarts (6.6 Liters)

Description: 11" Long, 8-3/8" Wide, 6.5" Deep Rear Sump. 1-3/4" Front Depth.

K137 Bolt kit and K128 are included with the purchase of the Pan. You will need to purchase a Kevko pickup tube, as well as any other accessories listed below that you might need to complete your install.

LS CHEVY PANS & KITS



LS1096 Circle Track Box Pan 5" Deep

This pan was designed for the LS based engines being used in a Circle Track application. Excellent oil control with multiple gates and a full Windage tray.

5" Deep; 9 Quart Capacity

LS1073 8" Deep S-10 Conversion Pan

8" Deep Fits S-10/ S15 and Blazer 4WD

7 Quart Capacity

Clears 4.25" Stroke

Provision for Universal Dip Stick

Zinc Clear Finish

Uses LS1073-1 Pu-Tube

WET SUMP CHEVY: CIRCLE TRACK PANS



IMCA87 602 Crate Hobby Stock Pan

*Description: IMCA legal in the Hobby Stock Division
This pan has 3 gates, a scraper and a removable tray.
This fits the "metric" car with engines lowered.
Pan Depth: 7-1/2"
Pan Capacity: 6 Quarts (5.7 Liters)
System Capacity: 7 Quarts (6.6 Liters)*

IMCA90 602 Crate SportMod Pan

*Description: IMCA Legal in both Northern & Southern SportMod Divisions! This pan has 3 gates, a scraper and a full louvered windage tray.
Pan Depth: 7-1/4"
Pan Capacity: 7 Quarts (6.6 Liters)
System Capacity: 8 Quarts (7.6 Liters)*

602 Hobby Pan **PN# IMCA87**

602 SportMod Pan **PN# IMCA90**

Oil Pump	Pickup Dia.	Kevko Pickup Tube
M155 602 Crate Pump	3/4"	1003-1-3/4

Oil Pump	Pickup Dia.	Kevko Pickup Tube
M155 602 Crate Pump	3/4"	1003-3/4

**Note: All of our Chevy Pans take the thick front seal gasket.*

WET SUMP CHEVY: CIRCLE TRACK PANS



IMCA92 604 Modified Crate Replacement

Description: 12" long, 15" wide sump. This pan has 6 gates, a diverter, full windage tray, scraper, and an oil temp fitting.

Pan Depth: 7"

Pan Capacity: 7 Quarts (6.6 Liters)

System Capacity: 8 Quarts (7.6 Liters)

604 Modified Pan **PN# IMCA92**

Oil Pump	Pickup Dia.	Kevko Pickup Tube
604 Pump M155	3/4"	1005-3/4

1086 Claimer Pan

Description: 2 gates and a crank scraper to control oil. Comes standard with 1" Inspection fitting.

Pan Depth: 7-1/4"

Pan Capacity: 6 Quarts (5.7 Liters)

System Capacity: 7 Quarts (6.6 Liters)

1957-1979 Left Dipstick, 2-Piece Seal	PN# 1086
1980-1985 Right Dipstick, 2-Piece Seal	PN# 1086RH
1985 and up Right Dipstick, 1-Piece Seal	PN# 1086NRH

Oil Pump	Pickup Dia.	Kevko Pickup Tube
M55, M55A, 10553	5/8"	1001
M155, 10554	3/4"	1001-3/4
M55HV, 10550	5/8"	1002
M155HV, 10551	3/4"	1002-3/4
10555, 10552	3/4" Bolt On	1002-10555

**Note: All of our Chevy Pans take the thick front seal gasket.*

WET SUMP CHEVY: CIRCLE TRACK PANS



1087 Chevrolet Metric Stock Car Pan

Description: This pan has 3 gates, a scraper and a removable tray. This fits the "metric" car with engines lowered. Comes standard with 1" Inspection Fitting

Pan Depth: 7-1/2"

Pan Capacity: 6 Quarts (5.7 Liters)

System Capacity: 7 Quarts (6.6 Liters)

- 1957-1979 Left Dipstick,
2-Piece Seal **PN# 1087**
- 1980-1985 Right Dipstick,
2-Piece Seal **PN# 1087RH**
- 1985 and up Right Dipstick,
1-Piece Seal **PN# 1087NRH**

Oil Pump	Pickup Dia.	Kevko Pickup Tube
M55, M55A, 10553	5/8"	1003-1
M155, 10554	3/4"	1003-1-3/4
M55HV, 10550	5/8"	1003
M155HV, 10551	3/4"	1003-3/4
10555, 10552	3/4" Bolt On	1003-10555

1087-PP Chevrolet Metric Stock Car Pouch Pan

Description: Same as the 1087 with the added advantage of a power pouch below the right side rail, for increased power and lower oil temperatures. This pan will accept a Tilton style mini starter, but won't fit with a high torque starter. This pan has 3 gates, a scraper and a removable tray. This fits the "metric" car with engines lowered. Comes Standard with 1" Inspection fitting

Pan Depth: 7-1/2"

Pan Capacity: 6 Quarts (5.7 Liters)

System Capacity: 7 Quarts (6.6 Liters)

- 1957-1979 Left Dipstick,
2-Piece Seal **PN# 1087-PP**
- 1980-1985 Right Dipstick,
2-Piece Seal **PN# 1087-PPRH**
- 1985 and up Right Dipstick,
1-Piece Seal **PN# 1087-PPNRH**

Oil Pump	Pickup Dia.	Kevko Pickup Tube
M55, M55A, 10553	5/8"	1003-1
M155, 10554	3/4"	1003-1-3/4
M55HV, 10550	5/8"	1003
M155HV, 10551	3/4"	1003-3/4
10555, 10552	3/4" Bolt On	1003-10555

**Note: All of our Chevy Pans take the thick front seal gasket.*

WET SUMP CHEVY: CIRCLE TRACK PANS



1089 Chevrolet Stock Car Pan

Description: This pan has 3 gates, diverter and a scraper. It uses the stock dipstick. This pan fits the metric car with stock engine location. Comes Standard with 1" Inspection Fitting"

Pan Depth: 8"

Pan Capacity: 7 Quarts (6.6 Liters)

System Capacity: 8 Quarts (7.6 Liters)

- 1957-1979 Left Dipstick,
2-Piece Seal **PN# 1089**
- 1980-1985 Right Dipstick,
2-Piece Seal **PN# 1089RH**
- 1985 and up Right Dipstick,
1-Piece Seal **PN# 1089NRH**

1090 Chevrolet Modified Pan

Description: This pan has 3 gates, a scraper and a removable tray. Comes Standard with 1" Inspection Fitting"

Pan Depth: 7-1/4"

Pan Capacity: 7 Quarts (6.6 Liters)

System Capacity: 8 Quarts (7.6 Liters)

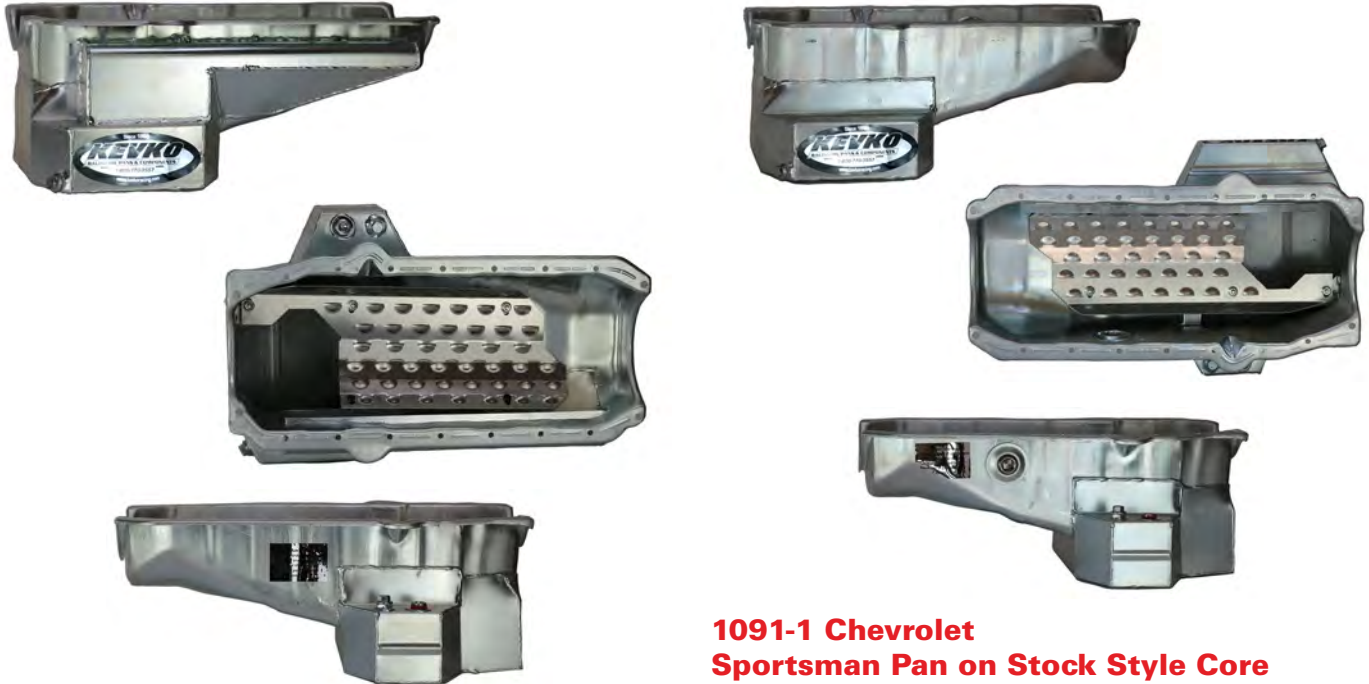
- 1957-1979 Left Dipstick,
2-Piece Seal **PN# 1090**
- 1980-1985 Right Dipstick,
2-Piece Seal **PN# 1090RH**
- 1985 and up Right Dipstick,
1-Piece Seal **PN# 1090NRH**

Oil Pump	Pickup Dia.	Kevko Pickup Tube
M55, M55A, 10553	5/8"	1007
M155, 10554	3/4"	1007-3/4
M55HV, 10550	5/8"	1008
M155HV, 10551	3/4"	1008-3/4
10555, 10552	3/4" Bolt On	1008-10555
M99HVS	3/4"	1012

Oil Pump	Pickup Dia.	Kevko Pickup Tube
M55, M55A, 10553	5/8"	1003
M155, 10554	3/4"	1003-3/4
M55HV, 10550	5/8"	1005
M155HV, 10551	3/4"	1005-3/4
10555, 10552	3/4" Bolt On	1005-10555
M99HVS	3/4"	1010

**Note: All of our Chevy Pans take the thick front seal gasket.*

WET SUMP CHEVY: CIRCLE TRACK PANS



1091-1-PP Sportsman Power Pouch

Description: Sportsman stock car pan on a "stock" style core. The shorter deeper sump along with the "stock" style core lets this pan fit into the metric car when the engine is lowered. 8" deep, 9 1/2" long, 13 1/3" wide sump. 5 gates, a diverter, scraper and a full windage tray. Pan Comes Standard with 1" Inspection Fitting Installed.

Pan Depth: 8"

Pan Capacity: 7 Quarts (6.6 Liters)

System Capacity: 8 Quarts (7.6 Liters)

- 1957-1979 Left Dipstick,
2-Piece Seal **PN# 1091-1PP**
- 1980-1985 Right Dipstick,
2-Piece Seal **PN# 1091-1PPRH**
- 1985 and up Right Dipstick,
1-Piece Seal **PN# 1091-1PPNRH**

Oil Pump	Pickup Dia.	Kevko Pickup Tube
M55, M55A, 10553	5/8"	1007
M155, 10554	3/4"	1007-3/4
M55HV, 10550	5/8"	1008
M155HV, 10551	3/4"	1008-3/4
10555, 10552	3/4" Bolt On	1008-10555
M99HVS	3/4"	1012

1091-1 Chevrolet Sportsman Pan on Stock Style Core

Description: Sportsman stock car pan on a "stock" style core. The shorter deeper sump along with the "stock" style core lets this pan fit into the metric car when the engine is lowered. 8" deep, 9 1/2" long, 13 1/3" wide sump. 5 gates, a diverter, scraper and a full windage tray. Comes Standard With Inspection Fitting Installed!

Pan Depth: 8"

Pan Capacity: 7 Quarts (6.6 Liters)

System Capacity: 8 Quarts (7.6 Liters)

- 1957-1979 Left Dipstick,
2-Piece Seal **PN# 1091-1**
- 1980-1985 Right Dipstick,
2-Piece Seal **PN# 1091-1RH**
- 1985 and up Right Dipstick,
1-Piece Seal **PN# 1091-1NRH**

Oil Pump	Pickup Dia.	Kevko Pickup Tube
M55, M55A, 10553	5/8"	1007
M155, 10554	3/4"	1007-3/4
M55HV, 10550	5/8"	1008
M155HV, 10551	3/4"	1008-3/4
10555, 10552	3/4" Bolt On	1008-10555
M99HVS	3/4"	1012

**Note: All of our Chevy Pans take the thick front seal gasket.*

WET SUMP CHEVY: CIRCLE TRACK PANS



1091 Chevrolet Sportsman Pan

Description: The shorter deeper sump makes this fit into the metric cars. 8" deep, 9 1/2" long, 13 1/2" wide sump. This pan has 4 gates, diverter, temp fitting. Comes standard with Inspection Fitting Installed!
Pan Depth: 8"
Pan Capacity: 7 Quarts (6.6 Liters)
System Capacity: 8 Quarts (7.6 Liters)

- 1957-1979 Left Dipstick,
2-Piece Seal **PN# 1091**
- 1980-1985 Right Dipstick,
2-Piece Seal **PN# 1091RH**
- 1985 and up Right Dipstick,
1-Piece Seal **PN# 1091NRH**

Oil Pump	Pickup Dia.	Kevko Pickup Tube
M55, M55A, 10553	5/8"	1007
M155, 10554	3/4"	1007-3/4
M55HV, 10550	5/8"	1008
M155HV, 10551	3/4"	1008-3/4
10555, 10552	3/4" Bolt On	1008-10555
M99HVS	3/4"	1012

1091W Chevrolet Stock Car Sportsman Pan with Windage Tray

*Description: The shorter deeper sump makes this fit into the metric cars. 8" deep, 9 1/2" long, 13 1/2" wide sump. This pan has all of the same features as the 1091, but with a full aluminum louvered windage tray. *COMES STANDARD WITH INSPECTION FITTING INSTALLED**
Pan Depth: 8"
Pan Capacity: 7 Quarts (6.6 Liters)
System Capacity: 8 Quarts (7.6 Liters)

- 1957-1985 Left or Right Dipstick,
2-Piece Seal **PN# 1091W**
- 1985 and up Right Dipstick,
1-Piece Seal **PN# 1091WNRH**

Oil Pump	Pickup Dia.	Kevko Pickup Tube
M55, M55A, 10553	5/8"	1007
M155, 10554	3/4"	1007-3/4
M55HV, 10550	5/8"	1008
M155HV, 10551	3/4"	1008-3/4
10555, 10552	3/4" Bolt On	1008-10555
M99HVS	3/4"	1012

**Note: All of our Chevy Pans take the thick front seal gasket.*

WET SUMP CHEVY: CIRCLE TRACK PANS



1092 6.5 6.5" Deep Sportsman Pan

Description: 12" long, 15" wide sump. This pan has 6 gates, a diverter, full windage tray, scraper, and an oil temp fitting.

Pan Depth: 6.5"

Pan Capacity: 6 Quarts (6.6 Liters)

System Capacity: Quarts (7.6 Liters)

- 1957-1985 Left or Right Dipstick,
2-Piece Seal **PN# 1092 6.5**
- 1985 and up Right Dipstick,
1-Piece Seal **PN# 1092 6.5 NRH**
- 1957-1985 Left or Right Dipstick,
2-Piece Seal w/1" Insp. Fitting **PN# 1092 6.5 ISP**
- 1985 and up Right Dipstick,
1-Piece Seal w/1" Insp. Fitting **PN# 1092 6.5 NRH ISP**

1092-PP Chevrolet Sportsman Power Pouch Pan

Description: 12" long, 15" wide sump. This pan has 6 gates, a diverter, full windage tray, scraper, and an oil temp fitting. Same as the 1092 pan but also has the advantage of a pouch below the right side pan rail for increased power and lower oil temperatures

Pan Depth: 7"

Pan Capacity: 7 Quarts (6.6 Liters)

System Capacity: 8 Quarts (7.6 Liters)

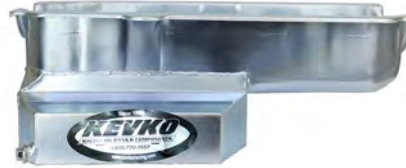
- 1957-1985 Left or Right Dipstick,
2-Piece Seal **PN# 1092-PP**
- 1985 and up Right Dipstick,
1-Piece Seal **PN# 1092-PP NRH**
- 1957-1985 Left or Right Dipstick,
2-Piece Seal w/1" Insp. Fitting **PN# 1092-PP ISP**
- 1985 and up Right Dipstick, 1-Piece
Seal w/1" Insp. Fitting **PN# 1092-PP NRH ISP**

Oil Pump	Pickup Dia.	Kevko Pickup Tube
M55, M55A, 10553	5/8"	1005-6.5
M155, 10554	3/4"	1005-6.5-3/4

Oil Pump	Pickup Dia.	Kevko Pickup Tube
M55, M55A, 10553	5/8"	1005
M155, 10554	3/4"	1005-3/4
M55HV, 10550	5/8"	1006
M155HV, 10551	3/4"	1006-3/4
10555, 10552	3/4" Bolt On	1006-10555
M99HVS	3/4"	1011

*Note: All of our Chevy Pans take the thick front seal gasket. ADD ISP to Part Number to include 1" Inspection Fitting installed

WET SUMP CHEVY: CIRCLE TRACK PANS



1092 Chevrolet Sportsman Pan

Description: 12" long, 15" wide sump. This pan has 6 gates, a diverter, full windage tray, scraper, and an oil temp fitting.

Pan Depth: 7"

Pan Capacity: 7 Quarts (6.6 Liters)

System Capacity: 8 Quarts (7.6 Liters)

- 1957-1985 Left or Right Dipstick,
2-Piece Seal **PN# 1092**
- 1985 and up Right Dipstick,
1-Piece Seal **PN# 1092 NRH**
- 1957-1985 Left or Right Dipstick,
2-Piece Seal w/1" Insp. Fitting **PN# 1092 ISP**
- 1985 and up Right Dipstick,
1-Piece Seal w/1" Insp. Fitting **PN# 1092 NRH ISP**

Oil Pump	Pickup Dia.	Kevko Pickup Tube
M55, M55A, 10553	5/8"	1005
M155, 10554	3/4"	1005-3/4
M55HV, 10550	5/8"	1006
M155HV, 10551	3/4"	1006-3/4
10555, 10552	3/4" Bolt On	1006-10555
M99HVS	3/4"	1011

1093 Sportsman Circle Track Pan

Description: 12" long, 15" wide sump. This pan has 6 gates, a diverter, scraper, and an oil temp fitting. Same as the 1092 without a full length windage tray.

Pan Depth: 7"

Pan Capacity: 7 Quarts (6.6 Liters)

System Capacity: 8 Quarts (7.6 Liters)

- 1957-1985 Left or Right Dipstick,
2-Piece Seal **PN# 1093**
- 1985 and up Right Dipstick,
1-Piece Seal **PN# 1093 NRH**
- 1957-1985 Left or Right Dipstick,
2-Piece Seal w/1" Insp. Fitting **PN# 1093 ISP**
- 1985 and up Right Dipstick,
1-Piece Seal w/1" Insp. Fitting **PN# 1093 NRH ISP**

Oil Pump	Pickup Dia.	Kevko Pickup Tube
M55, M55A, 10553	5/8"	1005
M155, 10554	3/4"	1005-3/4
M55HV, 10550	5/8"	1006
M155HV, 10551	3/4"	1006-3/4
10555, 10552	3/4" Bolt On	1006-10555
M99HVS	3/4"	1011

*Note: All of our Chevy Pans take the thick front seal gasket. ADD ISP to Part Number to include 1" Inspection Fitting installed

WET SUMP CHEVY: CIRCLE TRACK PANS



1096 Chevrolet Box Style Pan

Description: Full length power pouch on the right side. Inside there is a removable windage tray, oil control baffles and 10 gates! It will accept a Tilton style mini starter in the stock location.

Pan Depth: 7-1/4"

Pan Capacity: 9 Quarts (9.5 Liters)

System Capacity: 10 Quarts (10.4 Liters)

- 1957-1985 Left or Right Dipstick,
2-Piece Seal **PN# 1096**
- 1985 and up Right Dipstick,
1-Piece Seal **PN# 1096 NRH**
- 1957-1985 Left or Right Dipstick,
2-Piece Seal w/1" Insp. Fitting **PN# 1096 ISP**
- 1985 and up Right Dipstick,
1-Piece Seal w/1" Insp. Fitting **PN# 1096 NRH ISP**

1097 Aluminum Box Pan

Description: Billet ends and rails. It bolts through tubes on the right side and has circle track gating, removable tray, level plug, and temp fitting. The 1097 uses the reverse mount starter only. Available in standard or spread rail width. This pan installs with no gasket (Use Silicone)

Pan Depth: 7-1/4"

Pan Capacity: 9 Quarts (9.5 Liters)

System Capacity: 10 Quarts (10.4 Liters)

1" Inspection Fitting Installation Available

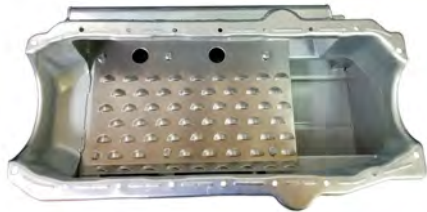
- 1957-1985 Left or Right Dipstick,
2-Piece Seal **PN# 1097**
- 1985 and up Right Dipstick,
1-Piece Seal **PN# 1097 NRH**
- 1957-1985 Left or Right Dipstick,
2-Piece Seal w/1" Insp. Fitting **PN# 1097 ISP**
- 1985 and up Right Dipstick,
1-Piece Seal w/1" Insp. Fitting **PN# 1097 NRH ISP**

Oil Pump	Pickup Dia.	Kevko Pickup Tube
M55, M55A, 10553	5/8"	1003
M155, 10554	3/4"	1003-3/4
M55HV, 10550	5/8"	1005
M155HV, 10551	3/4"	1005-3/4
10555, 10552,		
10555ST, 10552C	3/4" Bolt On	1005-10555
M99HVS	3/4"	1010

Oil Pump	Pickup Dia.	Kevko Pickup Tube
M55, M55A, 10553	5/8"	1003
M155, 10554	3/4"	1003-3/4
M55HV, 10550	5/8"	1005
M155HV, 10551	3/4"	1005-3/4
10555, 10552	3/4" Bolt On	1005-10555
M99HVS	3/4"	1010

**Note: All of our Chevy Pans take the thick front seal gasket. ADD ISP to Part Number to include 1" Inspection Fitting installed*

WET SUMP CHEVY: CIRCLE TRACK PANS



1097S Chevrolet Box Style Pan

Description: Full length power pouch on the right side that runs to the top of the rail. Great for High RPM engines above 7800. Inside there is a removable wind-age tray, oil control baffles and 10 gates! It will accept a Tilton style mini starter in the stock location.

Pan Depth: 7-1/4"

Pan Capacity: 9 Quarts (9.5 Liters)

System Capacity: 10 Quarts (10.4 Liters)

1" Inspection Fitting Installation Available

- 1957-1985 Left or Right Dipstick,
2-Piece Seal **PN# 1097S**
- 1985 and up Right Dipstick,
1-Piece Seal **PN# 1097S NRH**
- 1957-1985 Left or Right Dipstick,
2-Piece Seal **PN# 1097S ISP**
- 1985 and up Right Dipstick,
1-Piece Seal **PN# 1097S NRH ISP**

Oil Pump	Pickup Dia.	Kevko Pickup Tube
M55, M55A, 10553	5/8"	1003
M155, 10554	3/4"	1003-3/4
M55HV, 10550	5/8"	1005
M155HV, 10551	3/4"	1005-3/4
10555, 10552,		
10555ST, 10552C	3/4" Bolt On	1005-10555
M99HVS	3/4"	1010

2001 Chevrolet Stock Appearing Pan

Stock appearing steel oil pan. 2 gates, crank scraper, and a removable tray.

Pan Depth: 7-1/2"

Pan Capacity: 4 Quarts (3.78 Liters)

System Capacity: 5 Quarts (4.73 Liters)

WILL NOT WORK WITH STOCK STYLE PICK-UP TUBE

1" Inspection Fitting Installation Available

- 1957-1979 Left Dipstick,
2-Piece Seal **PN# 2001**
- 1980-1985 Right Dipstick,
2-Piece Seal **PN# 2001RH**
- 1986 and up Right Dipstick,
1-Piece Seal **PN# 2001NRH**
- 1957-1979 Left Dipstick,
2-Piece Seal w/1" Insp. Fitting **PN# 2001 ISP**
- 1980-1985 Right Dipstick,
2-Piece Seal w/1" Insp. Fitting **PN# 2001RH ISP**
- 1986 and up Right Dipstick,
1-Piece Seal w/1" Insp. Fitting **PN# 2001NRH ISP**

Oil Pump	Pickup Dia.	Kevko Pickup Tube
M55, M55A, 10553	5/8"	1001-1
M155, 10554	3/4"	1001-1-3/4
M55HV, 10550	5/8"	1001
M155HV, 10551	3/4"	1001-3/4
10555, 10552	3/4" Bolt On	1001-10555

**Note: All of our Chevy Pans take the thick front seal gasket. ADD ISP to Part Number to include 1" Inspection Fitting installed*

WET SUMP CHEVY: BIG BLOCK PANS



1071-STROKER Big Block Street/Strip Pan

Description: This pan is the same as the 1071, but is built on a "stroker" core to accept up to a 4.75 stroke when using steel rods. Fits most GM rear steer chassis except 1962-67 Chevy II, V8 Vega/Monza and 1955-57 Chevy. The pan has a 9" long by 10.5" wide sump, is 8" deep, and has a 2 gate assembly.

Pan Depth: 8"

Pan Capacity: 6 Quarts (5.7 Liters)

System Capacity: 7 Quarts (6.6 Liters)

GEN 4.....**PN# 1071S-4**

Mark 5/6.....**PN# 1071S-5**

**Kevko Oil Pans are sold including all required plugs.
Kevko pickup tube and other accessories sold separate.**

1071 Big Block Street/Strip Pan

Description: This big block street/drag pan has a 9" long by 10.5" wide sump, is 8" deep, and has 2 gate assemblies. The oil capacity in the pan is 6 quarts.

*This requires a universal dipstick,
which is sold separately.*

Pan Depth: 8"

Pan Capacity: 6 Quarts (5.7 Liters)

System Capacity: 7 Quarts (6.6 Liters)

GEN 4..... **PN# 1071**

Mark 5/6..... **PN# 1071S-5**

**Kevko Oil Pans are sold including all required plugs.
Kevko pickup tube and other accessories sold separate.**

WET SUMP CHEVY: BIG BLOCK PANS



1076 Big Block Chevy Full Box Pan

Description: This Drag or Marine pan is 8" deep, has a full length box, oil control gates, a scraper and directional windage screen. The capacity is 9.5 quarts.

Pan Depth: 8"

Pan Capacity: 10 Quarts (9.5 Liters)

System Capacity: 11 Quarts (10.4 Liters)

GEN 4..... **PN# 1076-4**
 Mark 5/6..... **PN# 1076-5**

**Kevko Oil Pans are sold including all required plugs.
 Kevko pickup tube and other accessories sold separate.**

1077 Big Block Chevy Reverse Sump

Description: Full box pan with a pair of "V" Style gates to control the oil. Also has an aluminum removable windage tray.

Pan Depth: 8" Deep in rear (flywheel) 7.5" Deep in Front (Balancer)

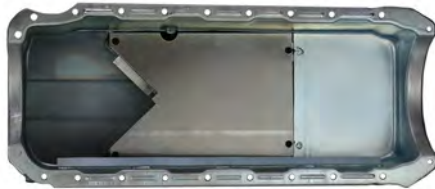
Pan Capacity: 12 Quarts (11.35 Liters)

System Capacity: 13 Quarts (12.30)

GEN 4..... **PN# 1077-4**
 Mark 5/6..... **PN# 1077-5**

**Kevko Oil Pans are sold including all required plugs.
 Kevko pickup tube and other accessories sold separate.**

WET SUMP CHEVY: BIG BLOCK PANS



1083 Big Block Chevy Drag Pan

Description: This Chevrolet big block pan is commonly used for Marine or Drag race use. It is 8" deep, has a 17" long sump, a removable aluminum tray, scraper, and oil control gating.

Pan Depth: 8"

Pan Capacity: 9 Quarts (8.5 Liters)

System Capacity: 10 Quarts (9.5 Liters)

GEN 4..... **PN# 1083-4**
 Mark 5/6..... **PN# 1083-5**

**Kevko Oil Pans are sold including all required plugs.
 Kevko pickup tube and other accessories sold separate.**

1084 Big Block Box Pan

Description: The 21" full length box pan features a right side power pouch for better windage control at high RPM's. This pan has an 8" deep sump for excellent oil control in drag and marine applications. Built on a stroker core, it will accept strokes up to 4.75. This pan requires a Mini Starter- will NOT fit stock style starter.

Pan Depth: 8"

Pan Capacity: 12 Quarts (11.4 Liters)

System Capacity: 13 Quarts (12.5 Liters)

GEN 4..... **PN# 1084-4**
 Mark 5/6..... **PN# 1084-5**

**Kevko Oil Pans are sold including all required plugs.
 Kevko pickup tube and other accessories sold separate.**



WET SUMP CHEVY: BIG BLOCK PAN/4.3L V6



1092BB Big Block Circle Track Pan

Description: This circle track pan is 7 1/2" deep, 6 gates, with a full louvered windage tray and has an 8 quart capacity.

Pan Depth: 7.5"

Pan Capacity: 7 Quarts (6.6 Liters)

System Capacity: 8 Quarts (7.6 Liters)

GEN 4..... **PN# 1092BB**
 Mark 5/6..... **PN# 1092BB-5**

**Kevko Oil Pans are sold including all required plugs.
 Kevko pickup tube and other accessories sold separate.**

1080 4.3L V6 Pan

Description: This pan was designed around the Camaro front clip. We offer both options for Road Race or Circle Track racing. Both feature optimum oil control gates, diverters, crank scraper, and removable aluminum tray. Zinc anodized finish.

Pan Depth: 7-1/2"

Pan Capacity: 6 Quarts (5.7 Liters)

System Capacity: 7 Quarts (6.6 Liters)+

4.3L - Circle Track Pan **PN# 1080**
 4.3L - Circle Track Pan **PN# 1080NRH**
 4.3L - Road Race Pan **PN# 1080RR**
 4.3L - Road Race Pan **PN# 1080RR-NRH**

For Circle Track Pan

Oil Pump	Pickup Dia.	Kevko Pickup Tube
M55, M55A, 10553	5/8"	1003-1
M155, 10554	3/4"	1003-1-3/4
M55HV, 10550	5/8"	1003
M155HV, 10551	3/4"	1003-3/4
10555, 10552	3/4" Bolt On	1003-10555

For Road Race Pan

Oil Pump	Pickup Dia.	Kevko Pickup Tube
M55, M55A, 10553	5/8"	1001-1
M155, 10554	3/4"	1001-1-3/4
M55HV, 10550	5/8"	1001
M155HV, 10551	3/4"	1001-3/4
10555, 10552	3/4" Bolt On	1001-10555

FORD 302-351W : STREET/STRIP/ROAD RACE



F101-3 - 302 and F102-3 - 351W **"T" Style Front Sump**

Description: Our street strip style front sump pan fits most Ford chassis requiring front sump pans. Fits with no modifications needed. 3 gating assemblies keep oil to the back of the sump with a rear baffle to keep oil from washing over. Crank scraper installed.

Pan Depth: 8"

Pan Capacity: 6 Quarts (5.7 Liters)

System Capacity: 7 Quarts (6.6Liters)

Sold as Pan only. Pickup tube and Accessories may be required.

**SHP/SVO/4-Bolt Pans are Custom built and will come PAINTED BLACK! Zinc Silver Plating is available*

289-302

Stock Block **PN# F101-3**
 SHP 2 Bolt..... **PN# F101-3SHP**
 SVO/SHP 4 Bolt **PN# F101-3SVO**

Pickup Tube **F101-3-1**

351W

Stock Block **PN# F102-3**
 SHP 2 Bolt..... **PN# F102-3SHP**
 SVO/SHP 4 Bolt **PN# F102-3SVO**

Pickup Tube **F102-3-1**

F105 - 302 and F106 - 351W **Stock Appearing Front Sump**

Description: Stock appearing oil pan. Same Capacity as OE. This is built from a new stamping, zinc plated, and fabricated baffles for the best oil control. 2 bolt rear main cap blocks only. Will not fit 4 bolt rear main caps.

Pan Depth: 8"

Pan Capacity: 4 Quarts (3.8 Liters)

System Capacity: 5 Quarts (4.7 Liters)

Sold as Pan only. Pickup tube and Accessories may be required.

289-302

Stock Block **PN# F105**
 SHP 2 Bolt..... **PN# F105SHP**
 SVO/SHP 4 Bolt **PN# F105SVO**

Pickup Tube **F105-1**

351W

Stock Block **PN# F106**
 SHP 2 Bolt..... **PN# F106SHP**
 SVO/SHP 4 Bolt **PN# F106SVO**

Pickup Tube **F106-1**

FORD 302-351W : STREET/STRIP/ROAD RACE



F404 - 302 and F405 - 351W Mustang Fox Body

*Description: 7-1/2" deep, 11-1/4" wide, 8" long.
Road Race style pan, 4 gate- Diamond shaped oil control assembly.*

Pan Depth: 7-1/2"

Pan Capacity: 6 Quarts (5.7 Liters)

System Capacity: 7 Quarts (6.6Liters)

SHP/SVO/4-Bolt Pans are Custom built and will come PAINTED BLACK! Zinc Silver Plating is available

289-302

Stock Block **PN# 404**

SHP 2 Bolt..... **PN# F404SHP**

SVO/SHP 4 Bolt **PN# F404SVO**

Pickup Tube **F404-1**

351W

Stock Block **PN# F405**

SHP 2 Bolt..... **PN# F405SHP**

SVO/SHP 4 Bolt **PN# F405SVO**

Pickup Tube **F405-1**

F406 - 302 and F407 - 351W Rear Sump Street/Strip

Description: This pan is 7 1/2" deep, 10" long, and has a 12" wide sump. The front of the 302 (F406) is 5 1/2" deep the the 351W (F407) is 6 1/2" deep. This pan is used for rack and pinion type steering and other Ford conversions.

Pan Depth: 7-1/2"

Pan Capacity: 7 Quarts (6.6 Liters)

System Capacity: 8 Quarts (7.6Liters)

SHP/SVO/4-Bolt Pans are Custom built and will come PAINTED BLACK! Zinc Silver Plating is available

289-302

Stock Block **PN# F406**

SHP 2 Bolt..... **PN# F406SHP**

SVO/SHP 4 Bolt **PN# F406SVO**

Pickup Tube **F406-1**

351W

Stock Block **PN# F407**

SHP 2 Bolt..... **PN# F407SHP**

SVO/SHP 4 Bolt **PN# F407SVO**

Pickup Tube **F407-1**

FORD 302-351W : STREET/STRIP/ROAD RACE



F409 - 302 and F410 - 351W **Stock Appearing Double Sump**

Description: Stock appearing oil pan. Same Capacity as OE. This is built from a new stamping, zinc plated, and fabricated baffles for the best oil control. 2 bolt rear main cap blocks only. Will not fit 4 bolt rear main caps.

Pan Depth: 8"

Pan Capacity: 4 Quarts (3.8 Liters)

System Capacity: 5 Quarts (4.7 Liters)

Sold as Pan only. Pickup tube and Accessories may be required.

289-302

Stock Block **PN# F409**

SHP 2 Bolt..... **PN# F409SHP**

SVO/SHP 4 Bolt **PN# F409SVO**

Pickup Tube..... **F409-1**

351W

Stock Block **PN# F410**

SHP 2 Bolt..... **PN# F410SHP**

SVO/SHP 4 Bolt **PN# F410SVO**

Pickup Tube..... **F410-1**

F501-RR - 302 and F502-RR - 351W **Sportsman Road Race**

Description: This pan is kicked out on both sides. The sump measures 12" long, 14" wide, 7 1/2" deep. There are 5 gates, a diverter, full windage tray and a crank scraper. Oil temp fitting, oil level plug, zinc plated.

Pan Depth: 7-1/2"

Pan Capacity: 9 Quarts (8.5 Liters)

System Capacity: 10 Quarts (9.5 Liters)

**SHP/SVO/4-Bolt Pans are Custom built and will come PAINTED BLACK! Zinc Silver Plating is available*

289-302

Stock Block **PN# F501-RR**

SHP 2 Bolt..... **PN# F501-RRSHP**

SVO/SHP 4 Bolt **PN# F501-RRSVO**

Pickup Tube..... **F501-1RR**

351W

Stock Block **PN# F502-RR**

SHP 2 Bolt..... **PN# F502-RRSHP**

SVO/SHP 4 Bolt **PN# F502-RRSVO**

Pickup Tube..... **F502-1RR**

FORD 302-351W : STREET/STRIP/ROAD RACE



F505 - 302 and F506 - 351W Box Pan

Pan Depth: 7"

Pan Capacity: 10-11 Quarts (9.5-10.4 Liters)

System Capacity: 11-12 Quarts (10.4-11.4Liters)

**SHP/SVO/4-Bolt Pans are Custom built and will come PAINTED BLACK! Zinc Silver Plating is available*

289-302

Stock Block **PN# F505**

SHP 2 Bolt..... **PN# F505SHP**

SVO/SHP 4 Bolt **PN# F505SVO**

Pickup Tube **F505-1**

351W

Stock Block **PN# F506**

SHP 2 Bolt..... **PN# F506SHP**

SVO/SHP 4 Bolt **PN# F506SVO**

Pickup Tube **F506-1**

F901 - 302 and F903 - 351W Cobra Kit Car

Description: This rear sump was designed to be used in the Cobra Kit cars. They work great with Mustang II front suspensions, or open chassis designs. Features a single gate, flat removable tray, and crank scraper. Works well for street/strip/ and mild road racing.

Pan Depth: 7-1/2"

Pan Capacity: 7 Quarts (6.6 Liters)

System Capacity: 8 Quarts (7.6Liters)

**SHP/SVO/4-Bolt Pans are Custom built and will come PAINTED BLACK! Zinc Silver Plating is available*

289-302

Stock Block **PN# F901**

SHP 2 Bolt..... **PN# F901SHP**

SVO/SHP 4 Bolt **PN# F901SVO**

Pickup Tube **F901-1**

351W

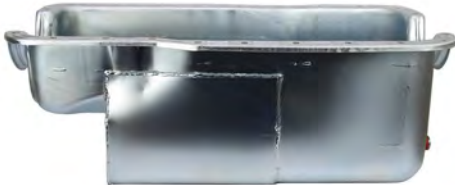
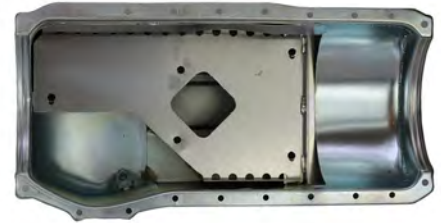
Stock Block **PN# F903**

SHP 2 Bolt..... **PN# F903SHP**

SVO/SHP 4 Bolt **PN# F903SVO**

Pickup Tube **F903-1**

FORD 302-351W AND CLEVELAND : STREET/STRIP/ROAD RACE



F905 - 302 and F906 - 351W Pantera Pan

Description: Our 302 and 351W Pantera pan uses similar characteristics as our 351C pan, designed for builders doing engine swaps in the Ford Pantera. It still features a set of diamond gates in the center of the pan for enhanced oil control, a crank scraper and baffles. To top that off it comes with an aluminum tray to isolate the oil in the 8" deep sump.

Pan Depth: 8"

Pan Capacity: 8 Quarts (7.6 Liters)

System Capacity: 9 Quarts (8.5 Liters)

**SHP/SVO/4-Bolt Pans are Custom built and will come PAINTED BLACK! Zinc Silver Plating is available*

Sold as Pan only.

289-302

Stock Block **PN# F905**
 SHP 2 Bolt..... **PN# F905SHP**
 SVO/SHP 4 Bolt **PN# F905SVO**

Pickup Tube **F905-1**

351W

Stock Block **PN# F906**
 SHP 2 Bolt..... **PN# F906SHP**
 SVO/SHP 4 Bolt **PN# F906SVO**

Pickup Tube **F906-1**

F602-400-M Ford Pantera Pan

Description: Designed as a mid-engine, pickup tube is centered in the pan surrounded by gates. Works great as a road race/touring oil pan.

Pan Depth: 8.5"

Pan Capacity: 8 Quarts (7.6 Liters)

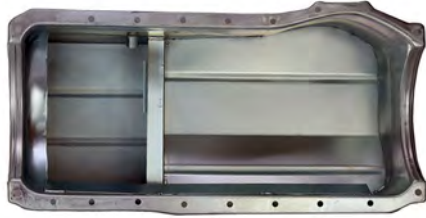
System Capacity: 9 Quarts (8.5 Liters)

Sold as Pan only. Pickup tube and Accessories listed below may be required.

400-M..... **PN# F602-400-M**

Pickup Tube **F602-400M-1**

FORD CLEVELAND: STREET/STRIP/ROAD RACE



F603 Ford Cleveland Truck Pan

Description: 8" deep, 10" long rear sump with 1 gate and scraper provision for universal dipstick. Oil capacity of this pan is a maximum of 7 quarts. This pan will fit the 4x4.

Pan Depth: 8"

Pan Capacity: 6 Quarts (5.7 Liters)

System Capacity: 7 Quarts (6.6Liters)

Sold as Pan only. Pickup tube and Accessories listed below may be required.

Cleveland Truck Pan **PN# F603**

Pickup Tube **F603-1**

F607 Ford Cleveland Front Sump "T" Style Drag Pan

Description: Fits most Ford front sump chassis with the exception of the Mustang II. Dual kick out sump increases oil capacity and lowers oil temps. 3 trap doors, great for street and strip use. Baffle and scaper installed in pan.

Pan Depth: 8"

Pan Capacity: 6 Quarts (5.7 Liters)

System Capacity: 7 Quarts (6.6Liters)

Cleveland Front Sump T Style **PN# F607**

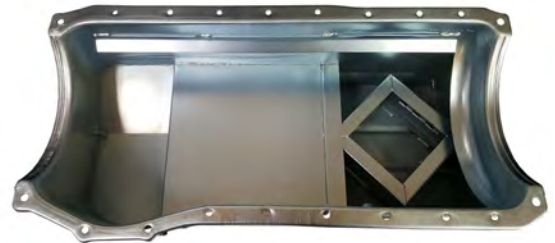
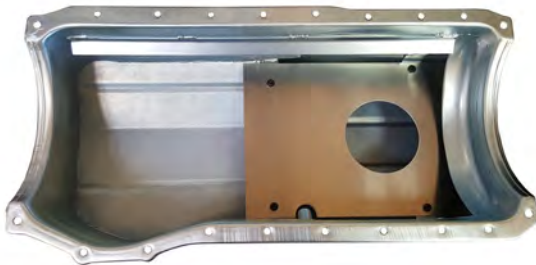
Pickup Tube **F607-1**



F351C-S 351C Pickup Tube Stud

351C Main Cap Stud with pickup tube support

FORD CLEVELAND: STREET/STRIP/ROAD RACE



F608 Ford Cleveland Cobra Kit Car Pan

Description: 7.5" deep, 11" long rear sump with 1 gate and scraper provision for universal dipstick. Works great with any open chassis!

Pan Depth: 7.5"

Pan Capacity: 7 Quarts (6.6 Liters)

System Capacity: 8 Quarts (7.6 Liters)

Sold as Pan only. Pickup tube and Accessories listed below may be required.

Cleveland Corbra Kit..... **PN# F608**

Pickup Tube..... **F608-1**

F609 Ford Cleveland Fox Body Pan

Description: Fits into Fox Body Mustangs with a Ford 351 Cleveland. 4 road race gates designed great for street, strip, and road racing.

Pan Depth: 8"

Pan Capacity: 6 Quarts (5.7 Liters)

System Capacity: 7 Quarts (6.6 Liters)

Pans may come painted black if plated version is out of stock

Sold as Pan only. Pickup tube and Accessories listed below may be required.

Cleveland Fox Body..... **PN# F609**

Pickup Tube..... **F609-1**



F351C-S 351C Pickup Tube Stud

351C Main Cap Stud with pickup tube support

FORD 302-351W : CIRCLE TRACK



F101 - 302 and F102 - 351W Front Sump Circle Track

Description: Front sump designed for circle track racing fits in most earlier style Ford chassis requiring a front sump. 3 gates keeps oil to the rear of the sump with a baffle to keep oil from washing over. Comes with crank scraper installed.

Pan Depth: 8"

Pan Capacity: 6 Quarts (5.7 Liters)

System Capacity: 7 Quarts (6.6Liters)

Sold as Pan only.

**SHP/SVO/4-Bolt Pans are Custom built and will come PAINTED BLACK! Zinc Silver Plating is available*

F201 - 302 and F202 - 351W Rear Sump Circle Track Pan

Description: Fits cars with front steer and engine set back, The sump is 7 1/2" deep, 12" wide and 10" long. The front of the 351W pan is 6 1/4" deep, and the front of the 302 pan is 5 1/2" deep. This pan has 4 gates, 2 diverters, a scraper and oil level plug.

Pan Depth: 7-1/2"

Pan Capacity: 7 Quarts (6.6 Liters)

System Capacity: 8 Quarts (7.6Liters)

Sold as Pan only.

**SHP/SVO/4-Bolt Pans are Custom built and will come PAINTED BLACK! Zinc Silver Plating is available*

289-302

Stock Block	PN# F101
SHP 2 Bolt.....	PN# F101SHP
SVO/SHP 4 Bolt	PN# F101SVO
Stock Block w/1" Insp. Fitting	PN# F101 ISP
SHP 2 Bolt w/1" Insp. Fitting.....	PN# F101SHP ISP
SHP/SVO 4 Bolt w/1" Insp. Fitting	PN# F101SVO ISP
Pickup Tube	F101-1

351W

Stock Block	PN# F102
SHP 2 Bolt.....	PN# F102SHP
SVO/SHP 4 Bolt	PN# F102SVO
Stock Block w/1" Insp. Fitting	PN# F102 ISP
SHP 2 Bolt w/1" Insp. Fitting.....	PN# F102SHP ISP
SHP/SVO 4 Bolt w/1" Insp. Fitting	PN# F102SVO ISP
Pickup Tube	F102-1

289-302

Stock Block	PN# F201
SHP 2 Bolt.....	PN# F201SHP
SVO/SHP 4 Bolt	PN# F201SVO
Stock Block w/1" Insp. Fitting	PN# F201 ISP
SHP 2 Bolt w/1" Insp. Fitting.....	PN# F201SHP ISP
SHP/SVO 4 Bolt w/1" Insp. Fitting	PN# F201SVO ISP
Pickup Tube	F201-1

351W

Stock Block	PN# F202
SHP 2 Bolt.....	PN# F202SHP
SVO/SHP 4 Bolt	PN# F202SVO
Stock Block w/1" Insp. Fitting	PN# F202 ISP
SHP 2 Bolt w/1" Insp. Fitting.....	PN# F202SHP ISP
SHP/SVO 4 Bolt w/1" Insp. Fitting	PN# F202SVO ISP
Pickup Tube	F202-1

FORD 302-351W : CIRCLE TRACK



F401 - 302 and F402 - 351W Double Sump Circle Track

Description: Circle Track Oil pan Designed to fit 1979-Up Mustang, 1981-1988 Thunderbird & Cougar, 1976 Capri and other Ford rear sump applications. This pan features 3 Trap doors, Baffles and Diverters, Crank Scraper and removable aluminum tray to reduce oil slosh. Inspection Fitting is standard in this pan.
Pan Depth: 7-1/2"
Pan Capacity: 6 Quarts (5.7 Liters)
System Capacity: 7 Quarts (6.6Liters)
Sold as Pan only.

**SHP/SVO/4-Bolt Pans are Custom built and will come PAINTED BLACK! Zinc Silver Plating is available*

289-302

Stock Block	PN# F401
SHP 2 Bolt.....	PN# F401SHP
SVO/SHP 4 Bolt	PN# F401SVO
Stock Block w/1" Insp. Fitting	PN# F401 ISP
SHP 2 Bolt w/1" Insp. Fitting.....	PN# F401SHP ISP
SHP/SVO 4 Bolt w/1" Insp. Fitting	PN# F401SVO ISP
Pickup Tube	F401-1

351W

Stock Block	PN# F402
SHP 2 Bolt.....	PN# F402SHP
SVO/SHP 4 Bolt	PN# F402SVO
Stock Block w/1" Insp. Fitting	PN# F402 ISP
SHP 2 Bolt w/1" Insp. Fitting.....	PN# F402SHP ISP
SHP/SVO 4 Bolt w/1" Insp. Fitting	PN# F402SVO ISP
Pickup Tube	F402-1

F501 - 302 and F502 - 351W Rear Sump Sportsman

Description: This pan is kicked out on both sides. The sump measures 12" long, 14" wide, 7 1/2" deep. There are 6 gates, a diverter, full windage tray and a crank scraper. Oil temp fitting, oil level plug, zinc plated.

Pan Depth: 7-1/2"
Pan Capacity: 7 Quarts (6.6 Liters)
System Capacity: 8 Quarts (7.6 Liters)

Sold as Pan only.

**SHP/SVO/4-Bolt Pans are Custom built and will come PAINTED BLACK! Zinc Silver Plating is available*

289-302

Stock Block	PN# F501
SHP 2 Bolt.....	PN# F501SHP
SVO/SHP 4 Bolt	PN# F501SVO
Stock Block w/1" Insp. Fitting	PN# F501 ISP
SHP 2 Bolt w/1" Insp. Fitting.....	PN# F501SHP ISP
SHP/SVO 4 Bolt w/1" Insp. Fitting	PN# F501SVO ISP
Pickup Tube	F501-1

351W

Stock Block	PN# F502
SHP 2 Bolt.....	PN# F502SHP
SVO/SHP 4 Bolt	PN# F502SVO
Stock Block w/1" Insp. Fitting	PN# F502 ISP
SHP 2 Bolt w/1" Insp. Fitting.....	PN# F502SHP ISP
SHP/SVO 4 Bolt w/1" Insp. Fitting	PN# F502SVO ISP
Pickup Tube	F502-1

FORD 302-351W : CIRCLE TRACK



F503 - 302 and F504 - 351W ASA Sportsman Pan

Description: This pan is kicked out on both sides. The sump measures 10 long, 14" wide. There are 5 gates, a diverter, crank scraper. Oil temp fitting, oil level plug, zinc plated. All 302 pans are notched for as much rack and pinion clearance as possible, the 351W is not.

*Pan Depth: 6-1/2"
Pan Capacity: 7 Quarts (6.6 Liters)
System Capacity: 8 Quarts 7.6 Liters)*

*Sold as Pan only.
SHP/SVO/4-Bolt Pans are Custom built and will come PAINTED BLACK! Zinc Silver Plating is available

289-302

Stock Block	PN# F503
SHP 2 Bolt.....	PN# F503SHP
SVO/SHP 4 Bolt	PN# F505SVO
Stock Block w/1" Insp. Fitting	PN# F503 ISP
SHP 2 Bolt w/1" Insp. Fitting.....	PN# F503SHP ISP
SHP/SVO 4 Bolt w/1" Insp. Fitting	PN# F503SVO ISP
Pickup Tube	F503-1

351W

Stock Block	PN# F504
SHP 2 Bolt.....	PN# F504SHP
SVO/SHP 4 Bolt	PN# F504SVO
Stock Block w/1" Insp. Fitting	PN# F504 ISP
SHP 2 Bolt w/1" Insp. Fitting.....	PN# F504SHP ISP
SHP/SVO 4 Bolt w/1" Insp. Fitting	PN# F504SVO ISP
Pickup Tube	F504-1

F505 - 302 and F506 - 351W Box Pan

*Pan Depth: 7"
Pan Capacity: 10-11 Quarts (9.5-10.4 Liters)
System Capacity: 11-12 Quarts (10.4-11.4Liters)*

Sold as Pan only.

**SHP/SVO/4-Bolt Pans are Custom built and will come PAINTED BLACK! Zinc Silver Plating is available*

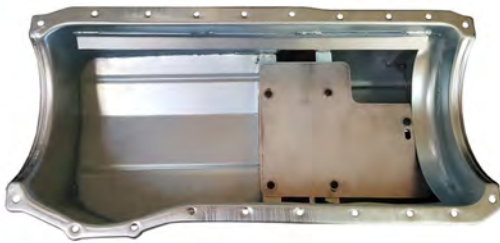
289-302

Stock Block	PN# F505
SHP 2 Bolt.....	PN# F505SHP
SVO/SHP 4 Bolt	PN# F505SVO
Stock Block w/1" Insp. Fitting	PN# F505 ISP
SHP 2 Bolt w/1" Insp. Fitting.....	PN# F505SHP ISP
SHP/SVO 4 Bolt w/1" Insp. Fitting	PN# F505SVO ISP
Pickup Tube	F505-1

351W

Stock Block	PN# F506
SHP 2 Bolt.....	PN# F506SHP
SVO/SHP 4 Bolt	PN# F506SVO
Stock Block w/1" Insp. Fitting	PN# F506 ISP
SHP 2 Bolt w/1" Insp. Fitting.....	PN# F506SHP ISP
SHP/SVO 4 Bolt w/1" Insp. Fitting	PN# F506SVO ISP
Pickup Tube	F506-1

FORD CLEVELAND : CIRCLE TRACK



F601 351C Modified Pan

Description: Single side kick out design works great for any circle track racing application in open chassis use. Pan features 4 trap doors, diverters, baffles, crank scraper and removable tray to isolate the oil in the rear sump.

Pan Depth: 7.5"

Pan Capacity: 8 Quarts (7.6 Liters)

System Capacity: 9 Quarts (9.5 Liters)

Sold as Pan only. Pickup tube and Accessories listed below may be required.

351C **PN# F601**

Pickup Tube **F601-1**

F602 351C Stock Car Pan

Description: Single side kick out, dual sump design works great for any circle track racing application in stock car chassis. Pan features 3 trap doors, diverters, baffles, crank scraper and removable tray to isolate the oil in the rear sump. Standard with Inspection fitting installed.

Pan Depth: 7.5"

Pan Capacity: 6 Quarts (5.7 Liters)

System Capacity: 7 Quarts (6.6 Liters)

Sold as Pan only. Pickup tube and Accessories listed below may be required.

351C **PN# F602**

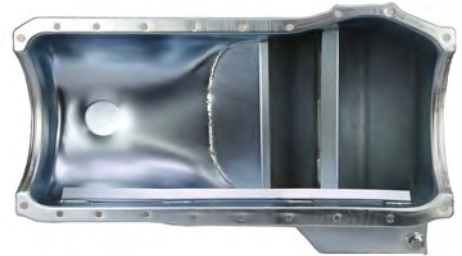
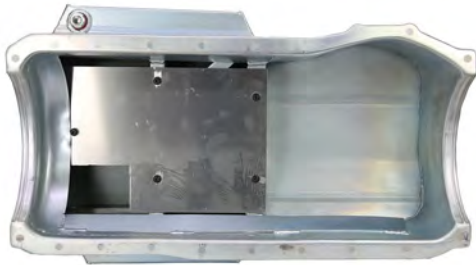
Pickup Tube **F601-1**



F351C-S 351C Pickup Tube Stud

351C Main Cap Stud with pickup tube support

FORD CLEVELAND : CIRCLE TRACK



F604 351C Sportsman Pan

Description: Our sportsman pan was designed for the high demand of circle track racing. Flat aluminum tray keeps oil isolated in the rear sump, with 6 gating assemblies control the oil. Dual side kick out increases oil capacity and reduces oil temperatures.

Pan Depth: 7.5"

Pan Capacity: 9 Quarts (5.7 Liters)

System Capacity: 10 Quarts (6.6Liters)

Sold as Pan only. Pickup tube and Accessories listed below may be required.

351C **PN# F604**

Pickup Tube **F601-1**

F606 351C Front Sump Pan

Description: Fits most Ford front sump chassis with the exception of the Mustang II. Designed primarily for circle track racing. Right side kick out sump increases oil capacity and lowers oil temps. Baffle, scaper, and 3 trap doors installed in pan.

Pan Depth: 8"

Pan Capacity: 6 Quarts (5.7 Liters)

System Capacity: 7 Quarts (6.6Liters)

Sold as Pan only. Pickup tube and Accessories listed below may be required.

351C **PN# F606**

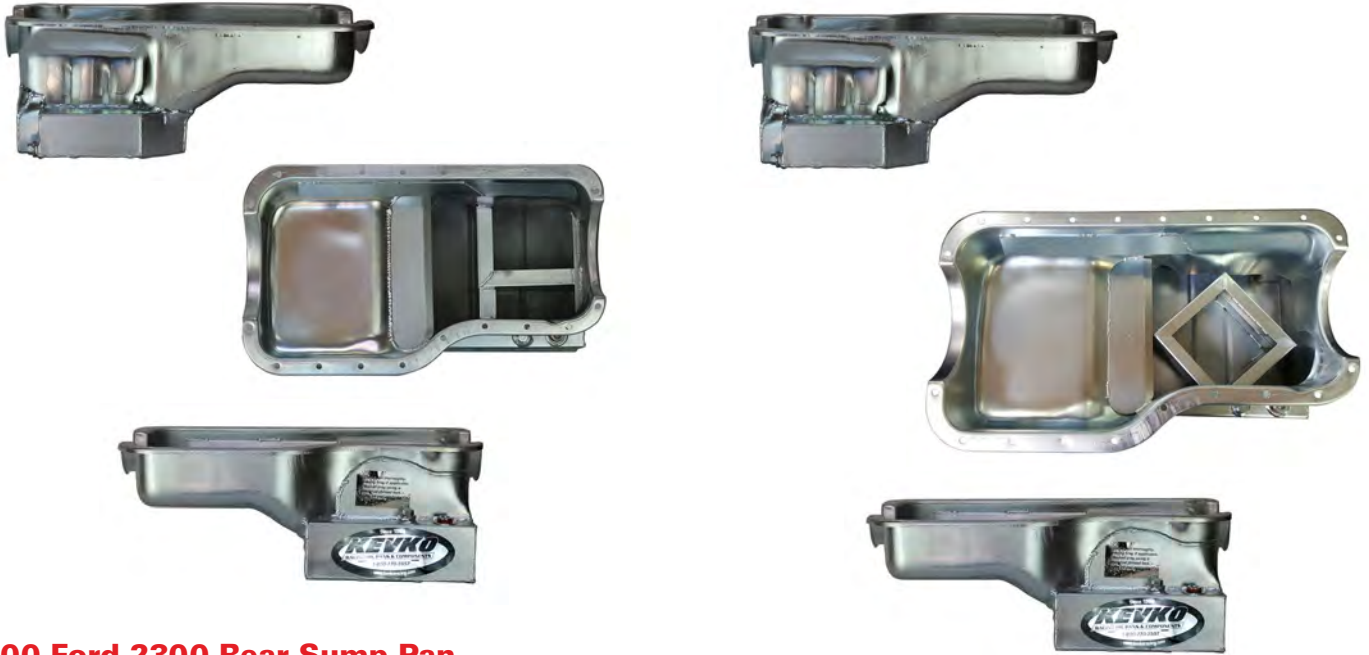
Pickup Tube **F606-1**



F351C-S 351C Pickup Tube Stud

351C Main Cap Stud with pickup tube support

FORD 2300



F800 Ford 2300 Rear Sump Pan

Description: 3 gates, scraper, baffles, oil level plug, oil temp fitting..
Pan Depth: 7-1/4"
Pan Capacity: 5 Quarts (4.7 Liters)
System Capacity: 6 Quarts (5.7Liters)

F800RR Ford 2.3 Rear Sump Road Race Pan

Description: 4 gates, scraper, baffles, oil level plug, oil temp fitting. Same design as our standard F800 with gating designed for road racing
Pan Depth: 7-1/4"
Pan Capacity: 5 Quarts (4.7 Liters)
System Capacity: 6 Quarts (5.7Liters)

2300 **PN# F800**

Pickup Tube for F800 Pan..... **F800-1**
 Pickup Tube for 1/2" Strapped Block..... **F800-1S**

2.3 Liter **PN# F800RR**

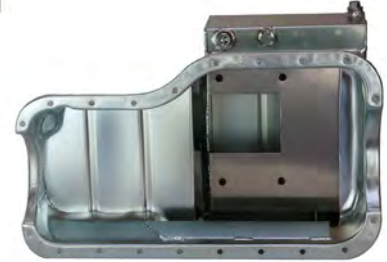
Pickup Tube **F800RR-1**



F2300-S 2.3L Ford Main Cap Stud

OEM Stud for supporting pickup tube off the main cap on all 2.3L Fords

FORD 2300



F800W Ford 2300 Rear Sump Pan W/ Windage Tray

*Description: 3 gates, scraper and baffles.
Includes aluminum windage tray.
Pan Depth: 7-1/4"
Pan Capacity: 5 Quarts (4.7 Liters)
System Capacity: 6 Quarts (5.7Liters)*

F801 Ford 2300 Front Sump Pan

*Description: 3 gates, scraper and baffles.
Fits into Pinto Chassis.
Pan Depth: 7-1/4"
Pan Capacity: 6 Quarts (5.7 Liters)
System Capacity: 7 Quarts (6.6 Liters)*

2300 **PN# F800W**

2300 **PN# F801**

Pickup Tube **F800-1**

Pickup Tube **F801-1**

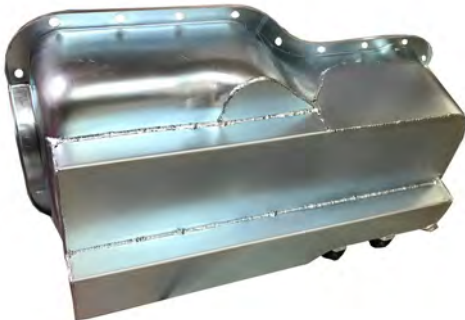
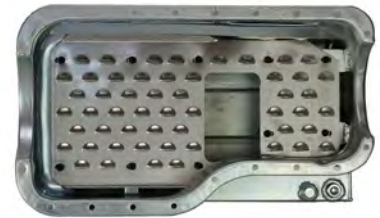
Pickup Tube for 1/2" Strapped Block..... **F800-1S**



F2300-S 2.3L Ford Main Cap Stud

*OEM Stud for supporting pickup tube
off the main cap on all 2.3L Fords*

FORD 2300



F803 Ford 2300 Flat Bottom Pan

Description: Flat bottom Pan has multiple gates, a crank scraper, and a louvered windage tray. It fits with a stock starter, and there's a hole in the tray for using your stock dipstick.

Pan Depth: 7"

Pan Capacity: 4 Quarts (3.8 Liters)

System Capacity: 5 Quarts (5.7 Liters)

2300 **PN# F803**

Pickup Tube **F803-1**

F802 2300 Dry Sump

Available in many different configurations, including 2 and 3 exits versions.

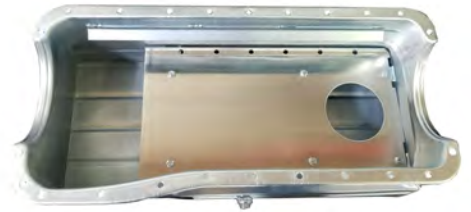
2300 **PN# F802**



F2300-S 2.3L Ford Main Cap Stud

OEM Stud for supporting pickup tube off the main cap on all 2.3L Fords

FORD 2300 AND BIG BLOCK/FE



F804 Ford 2300 Stock Appearing Pan

Description: Stock appearing pan with added baffling and removable aluminum tray to keep oil in the sump.

Pan Depth: 7"

Pan Capacity: 4 Quarts (3.8 Liters)

System Capacity: 5 Quarts (5.7 Liters)

2300 **PN# F804**

Pickup Tube **F804-1**

F303 460 Box Pan

Kevko 460 Ford Fox Body. 10" Wide, 23" long, 8" Deep Rear Sump with gates for increased oil control and crank scraper. Works with M84D and M84DHV oil pumps using a Kevko F303-1 Pickup Tube

Pan Depth: 8"

Pan Capacity: 11 Quarts (6.6 Liters)

System Capacity: 12 Quarts(7.6 Liters)

460..... **PN# F303**

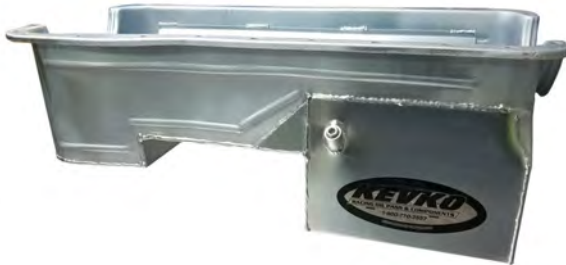
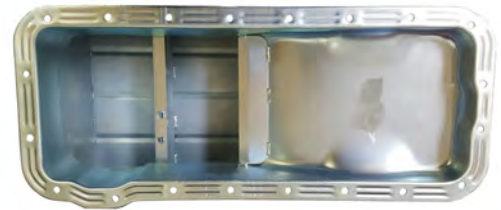
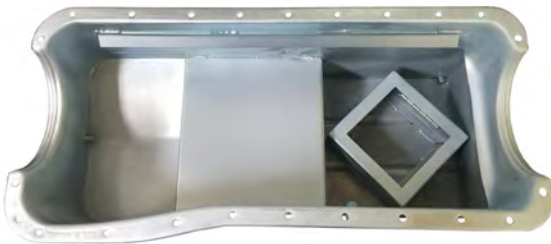
Pickup Tube **F303-1**



F2300-S 2.3L Ford Main Cap Stud

OEM Stud for supporting pickup tube off the main cap on all 2.3L Fords

FORD BIG BLOCK/FE



F304 460 Fox Body

Kevko dual sump 460 Ford Fox Body. 9" Wide, 9" long, 9" Deep Rear Sump with Diamond gates for increased oil control and crank scraper. Works with M84D and M84DHV oil pumps.

Pan Depth: 9"
 Pan Capacity: 7 Quarts (6.6 Liters)
 System Capacity: 8 Quarts (7.6 Liters)

460..... **PN# F304**

Pickup Tube..... **F304-1**

FE102 "T" Style Front Sump

Description: FE Ford 332-428 Street/Strip oil pan. Gating with 3 trap doors to isolate oil to rear of pan.

Pan Depth: 6-3/4"
 Pan Capacity: 6 Quarts (5.7 Liters)
 System Capacity: 7 Quarts (6.6 Liters)

332-428 **PN# FE102**

Pickup Tube **FE102-1**

FORD BIG BLOCK/FE



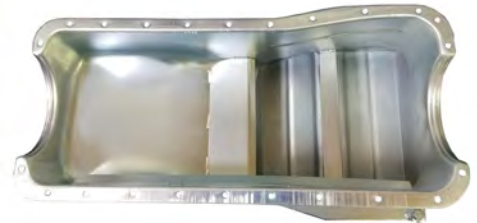
F302 460 Ford Truck Pan

10" Long, 9" Wide, 11" Deep Sump
 Pan Depth: 11"
 Pan Capacity: 9 Quarts (8.5 Liters)
 System Capacity: 10 Quarts(9.4 Liters)

Kevko 460 Truck Pan works with any 2 or 4 wheel drive Trucks, Broncos, and Vans. Will not clear crossover exhaust. Designed for use with long tube headers. Works great for off road use.

Works with M84D and M84DHV oil pumps.

- 460..... **PN# F302**
- Pickup Tube **F302-1**



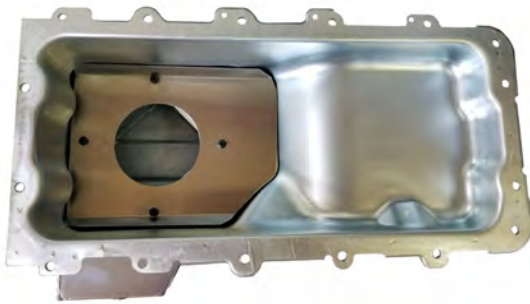
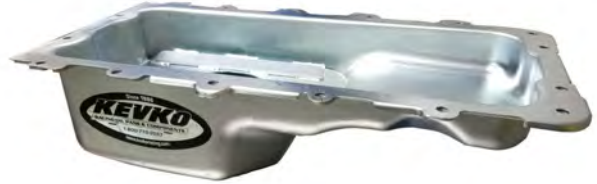
F301 460 Front Sump

Pan Depth: 8"
 Pan Capacity: 6 Quarts (6.6 Liters)
 System Capacity: 7 Quarts(7.6 Liters)

Kevko 460 "T" Style Front Sump. 12" Wide, 10" long, 8" Deep Sump with gating for increased oil control and crank scraper. Works with M84D and M84DHV oil pumps.

- 460..... **PN# F301**
- Pickup Tube **F301-1**

FORD 4.6/5.4



F3001 4.6/5.4 Stock Appearing Pan

Rear sump stock appearing pan for Ford 4.6/5.4 engines. Baffled pan with scrapers control oil better than any stock pan.

4.6/5.4..... **PN# F3001**

Pickup Tube..... **F3001-1**

F3002 4.6/5.4 Rear Sump Road Race Pan

Rear sump oil pan is designed for Ford 4.6L/5.4L blocks in '96-'04 & '05-up Mustangs. It has 6-1/2" deep, 13" wide by 8" long sump.

4.6/5.4..... **PN# F3002**

Pickup Tube..... **F3002-1**

MOPAR



M101 - 340 and M102 - 360
CircleTrack Modified

Description: 12" Long Sump, 12" Wide, 3" Right Side Kickout

Pan Depth: 7.5"
Pan Capacity: 6 Quarts (5.7 Liters)
System Capacity: 7 Quarts (6.6 Liters)

It has 3 gates, 2 diverters, removable tray, crank scraper and oil level plug. Inspection fitting is standard in this pan.

Sold as Pan only. Pickup tube and Accessories listed below may be required.

- 318-340 **PN# M101**
- 360..... **PN# M102**
- Pickup Tube **M101-1**

M101SC - 340 and M102SC - 360
CircleTrack Metric

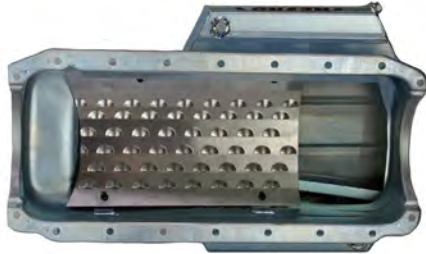
Description: 10" Long Sump, 11.5" Wide, 2.5" Right Side Kickout
Pan Depth: 7.5"
Pan Capacity: 6 Quarts (5.7 Liters)
System Capacity: 7 Quarts (6.6 Liters)

This newly designed Kevko pan can be used for the racer switching over to the Mopar 360 engine, under the IMCA stock car rules. This pan has good gating, a removable tray, and comes standard with Inspection Fitting.

Sold as Pan only. Pickup tube and Accessories listed below may be required.

- 318-340 **PN# M102 SC**
- 360..... **PN# M102 SC**
- Pickup Tube **M101-1**

MOPAR



M201 - 340 and M202 - 360
Circle Track Sportsman

Description: 12" Long Sump, 14" Wide, 3" Right and Left Side Kickout
Pan Depth: 7.5"
Pan Capacity: 8 Quarts (7.6 Liters)
System Capacity: 9 Quarts (8.5 Liters)

It has 6 gates, a diverter, full windage tray, crank scraper, oil temp fitting and an oil level plug.

Sold as Pan only. Pickup tube and Accessories listed below may be required.

- 318-340 **PN# M201**
- 360..... **PN# M202**
- Pickup Tube **M101-1**

M201PP - 340 and M202PP - 360
Circle Track Sportsman Pouch Pan

Description: 12" Long Sump, 14" Wide, 3" Right and Left Side Kickout
Pan Depth: 7.5"
Pan Capacity: 8 Quarts (7.6 Liters)
System Capacity: 9 Quarts (8.5 Liters)

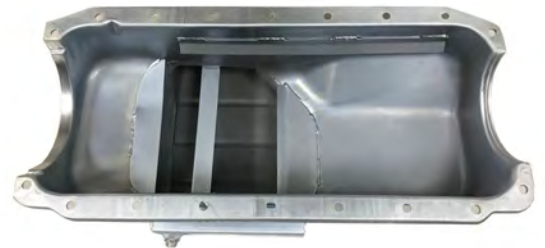
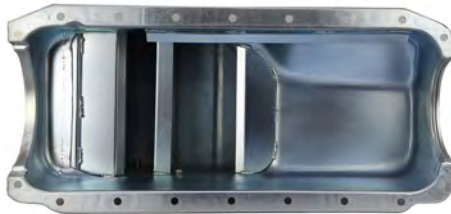
It has 6 gates, a diverter, full windage tray, crank scraper, oil temp fitting and an oil level plug. This pan has the same gating and capacity as the regular sportsman pan, but with an added power pouch on the right side.

Sold as Pan only. Pickup tube and Accessories listed below may be required.

- 318-340 **PN# M201PP**
- 360..... **PN# M202PP**
- Pickup Tube **M101-1**

**ADD ISP to Part Number to include 1" Inspection Fitting installed*

MOPAR



M301 - 340 and M302 - 360

Stock Location

Pan Depth: 8"

Pan Capacity: 5 Quarts (4.7 Liters)

System Capacity: 6 Quarts (5.7 Liters)

It is fully equipped with a gate assembly, 2 hinge traps, multiple diverters, scrapers and a baffle. Fits all standard Mopar K Frames. Uses factory Mopar dipstick.

Sold as Pan only. Pickup tube and Accessories listed below may be required.

318-340 **PN# M301**

360..... **PN# M302**

Pickup Tube **M301-1**



Mopar PUTUBE STUD

This is the pickup tube mounting bolt for the 340 / 360 Mopar

M301KO - 340 and M302KO - 360

Stock Location Extra Capacity

Description: 11" wide with a 1 3/4" kick out on each side

Pan Depth: 8"

Pan Capacity: 6 Quarts (5.7 Liters)

System Capacity: 7 Quarts (6.6 Liters)

It is fully equipped with a gate assembly, 3 hinge traps, multiple diverters, scrapers and a baffle. This is a 6 quart pan which should fit most production Chrysler chassis, but you MAY need to notch the K frame.

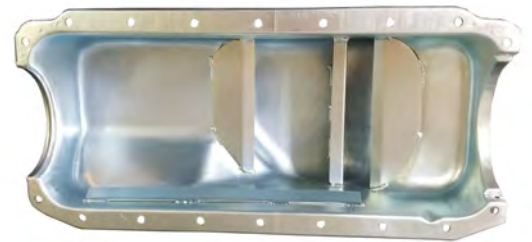
Sold as Pan only. Pickup tube and Accessories listed below may be required.

318-340 **PN# M301 KO**

360..... **PN# M302 KO**

Pickup Tube **M301-1**

MOPAR



M303 - 340 and M304 - 360 Truck Pan

*Description: 8" Long Sump, 8.375" Wide
Pan Depth: 8"
Pan Capacity: 5 Quarts (4.7 Liters)
System Capacity: 6 Quarts (5.7 Liters)*

Mopar Truck Pan

Sold as Pan only. Pickup tube and Accessories listed below may be required.

318-340	PN# M303
360.....	PN# M304
Pickup Tube	M303-1

M305 - 340 and M306 - 360 Stock Appearing "Cheater" Pan

*Pan Depth: 7"
Pan Capacity: 4 Quarts (3.8 Liters)
System Capacity: 5 Quarts (4.7 Liters)*

It is fully equipped with a 2 gate trap door assembly, Crank Scraper and a Baffles. Fits all standard Mopar K Frames.

Sold as Pan only. Pickup tube and Accessories listed below may be required.

318-340	PN# M305
360.....	PN# M306
Pickup Tube	M305-1



Mopar PUTUBE STUD

This is the pickup tube mounting bolt for the 340 / 360 Mopar

MOPAR



**M307 - 340 and M308 - 360
Dakota Truck Pan**

*Description: 6.5" Long Sump, 8.375" Wide
Pan Depth: 9"
Pan Capacity: 5 Quarts (4.7 Liters)
System Capacity: 6 Quarts (5.7 Liters)*

Dakota Mopar Truck Pan

This pan will fit 1987-2004 Dodge Dakota Trucks.

Sold as Pan only. Pickup tube and Accessories listed below may be required.

- 318-340 **PN# M307**
- 360..... **PN# M308**
- Pickup Tube **M307-1**

M319 - 340 and M320 - 360 Rear Sump Pan

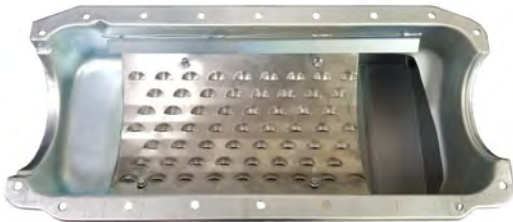
*Description: 10" Long, 10" Wide, 8" Deep
Pan Depth: 8"
Pan Capacity: 6 Quarts (4.7 Liters)
System Capacity: 7 Quarts (5.7 Liters)*

Mopar Rear Sump Pan, designed for open chassis cars

Sold as Pan only. Pickup tube and Accessories listed below may be required.

- 318-340 **PN# M319**
- 360..... **PN# M320**
- Pickup Tube **M303-1**

MOPAR



**M321 - 340 and M322 - 360
Mopar Rear-ump Street/Strip**

*Description: 11.75" Long, 8.25" Wide, 8" Deep
Pan Depth: 8"*

Pan Capacity: 6 Quarts (4.7 Liters)

System Capacity: 7 Quarts (5.7 Liters)

Mopar Rear Sump Pan, designed for open chassis cars, Pan has oil control gate, Crank Scraper, and full wind-age tray.

Sold as Pan only. Pickup tube and Accessories listed below may be required.

340..... **PN# M321**
360..... **PN# M322**

Pickup Tube **M303-1**

**M323 - 340 and M324 - 360
Stock Appearing Pan**

Pan Depth: 7"

Pan Capacity: 4 Quarts (3.8 Liters)

System Capacity: 5 Quarts (4.7 Liters)

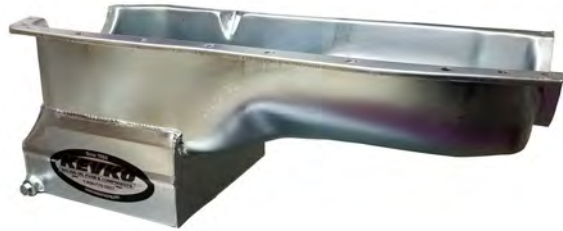
Oil pan is same as OE. Built from a new stamping, zinc plated, and uses fabricated baffles to control oil.

Sold as Pan only. Pickup tube and Accessories listed below may be required.

318-340 **PN# M323**
360..... **PN# M324**

Pickup Tube **M305-1**

MOPAR AND PONTIAC | OLDSMOBILE



M403 - 340 and M404 - 360 5.25" Dry Sump

*Description: Low Ground Clearance Asphalt Car.
Custom Options Available if needed. Call 800 770-3557
or Email Josh@kevkoracing.com for any technical
questions.*

Pan Depth: 5.25"

Available with 2, 3 and 4 Exits

318-340 **PN# M403**
360..... **PN# M404**

Olds 100 8.5" Deep Street/Strip Pan

*Description: 9" Long, 9.5" Wide, 8.5" Deep
Pan Depth: 8.5"
Pan Capacity: 6 Quarts (5.7 Liters)
System Capacity: 7 Quarts (6.6Liters)*

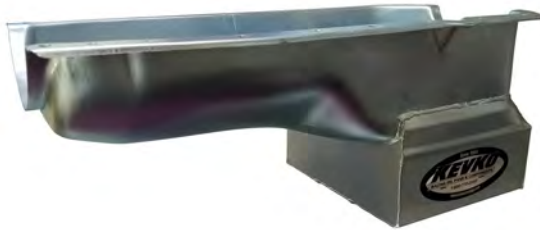
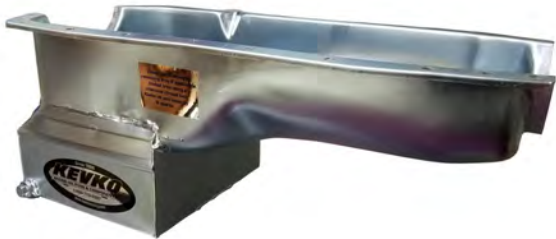
*All 1965-later V8's in most stock GM chassis without
modifications. Oil Pan,*

*Steel, Clear Zinc, Deep Sump.
Engine Application: 330-455*

330-455 **PN# OLDS 100**

Pickup Tube **Olds 100-1**

PONTIAC | OLDSMOBILE



Olds 101 9.25" Deep Street/Strip Pan

*Description: 9" Long, 9.5" Wide, 8.5" Deep
Pan Depth: 8.5"*

Pan Capacity: 6 Quarts (5.7 Liters)

System Capacity: 7 Quarts (6.6Liters)

All 1965-later V8's in most stock GM chassis without modifications. Oil Pan,

Steel, Clear Zinc, Deep Sump.

Engine Application: 330-455

330-455 **PN# OLDS 101**

Pickup Tube **Olds 101-1**

Olds 104 Stock Appearing Pan

Description: Same oil pan stamping as OE. Zinc plated with fabricated baffels for oil control. Built using a brand new stamping.

Pan Depth: 7.5

Pan Capacity: 4 Quarts (3.8 Liters)

System Capacity: 5 Quarts (4.7 Liters)

All 1965-later V8's in most stock GM chassis without modifications. Oil Pan,

Steel, Clear Zinc, Deep Sump.

Engine Application: 330-455

330-455 **PN# OLDS 104**

Pickup Tube **Olds 104-1**

PONTIAC | OLDSMOBILE AND SUZUKI GSXR



Olds 103 7.5" Deep Box Pan

This marine or drag pan is 7.5" deep. It has 2 sets of gates for oil control, oil level plug, removable aluminum tray, dipstick, and is for using with the clockable starter. The capacity is 10 quarts.

Use With Pickup Tube Olds 103-1

330-455 **PN# OLDS 103**

Pickup Tube **Olds 103-1**



Suzuki GSXR Oil Pan & PU-Tube

This Suzuki GSXR oil pan will fit 2006 and newer 600/750cc engines. This pan gives you an extra quart of oil capacity which helps lower your oil temps. Circle track racing specific pick-up tube is included, along with new bolts for installation. The Pick-Up Tube is fully welded NOT brazed or soldered on like some other on the market..

Suzuki Pan & PU Tube..... **PN# GSXR**



Suzuki GSXR Water Neck

This billet aluminum housing is a replacement for the factory plastic upper radiator hose housing on the 2006 and newer Suzuki GSXR 600/750 engines. This trick piece allows you to plump the upper radiator hose any direction you want with the #12 AN port coming out.

Fits- 2006 and newer Suzuki GSXR 600/750 Engines

Suzuki Water Neck **PN# GSXR #12**

DRY SUMPS



D102 6.25" Dry Sump

Dry Sump Pan. 6.25" deep with Power Pouch

Exits are #12 AN male with a 51% Screen over each scavenge body.

Please allow 1-2 days lead time for raw or painted, and 2-3 weeks for Zinc Plated Oil Pans

****Inspection Fitting Not Installed****

Available with 2-4 exits

- Left or Right Dipstick with
2pc Rear Seal (1957-1985).....**PN# D102**
- Right Dipstick with
1pc Rear Seal (1985 and up).....**PN# D102 NRH**

F704 - 351W Ford Flat Bottom Pan

351W

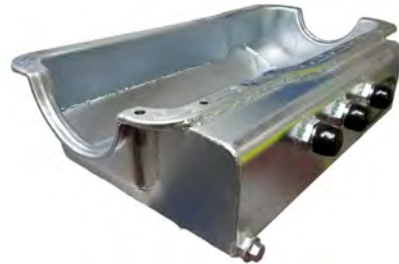
Ford Steel Flat Bottom Dry Sump

Available in 2, 3, or 4 exits and 4.5" or 5" Deep

Kevko custom builds steel and aluminum dry sumps to any specifications you may need. If you do not see it, call us Toll Free at 800 770 3557, or email our tech support at josh@kevkoracing.com

351W **PN# F704**

DRY SUMPS



D400-3 Chevy Late Model Dry Sump

3 Exit Aluminum Dry Sump

6-1/4" Deep

Kevko custom builds steel and aluminum dry sumps to any specifications you may need. If you do not see it, call us Toll Free at 800 770 3557, or email our tech support at josh@kevkoracing.com

..... **PN# D400-3**

F703 - 302 Ford Flat Bottom Pan

Ford Steel Flat Bottom Dry Sump

Available in 2, 3, or 4 exits and 4.5" or 5" Deep

Kevko custom builds steel and aluminum dry sumps to any specifications you may need. If you do not see it, call us Toll Free at 800 770 3557, or email our tech support at josh@kevkoracing.com

302..... **PN# F703**

DRY SUMPS



D105 5" Steel Asphalt Drysump Pan

This dry sump pan is 5" deep, kicked out at the rail, and bolts through the bottom of the pan.

Available with 2-4 exits

Left or Right Dipstick with
 2pc Rear Seal (1957-1985).....**PN# D105**
 Right Dipstick with
 1pc Rear Seal (1985 and up).....**PN# D105 NRH**



D101 4.25" Dry Sump

Dry Sump Pan. 4.25" deep with scraper.

Exits are #12 AN male with a 51% Screen over each scavenge body.

Please allow 1-2 days lead time for raw or painted, and 2-3 weeks for Zinc Plated Oil Pans

****Inspection Fitting Not Installed****

Kevko has been building custom steel and aluminum oil pans for over 30 years. If you do not see the pan you are interested in, please call us at 800-770-3557 to learn more about your options.

Available with 2-4 exits

Left or Right Dipstick with
 2pc Rear Seal (1957-1985).....**PN# D101**
 Right Dipstick with
 1pc Rear Seal (1985 and up).....**PN# D101 NRH**

INDUSTRIAL OIL PANS



IND 104 460 Ford

460 Ford Box Pan

Kevko Industrial Pans are manufactured in the United States to fit every customers specs however needed. We do offer quantity pricing. Please contact Nathan at sales@kevkoracing.com or Josh at josh@kevkoracing.com for more details and pricing options.

460.....PN# IND 104

IND 102 20 Quart Oil Pan

5 Gallon (20 Quart) Small block Chevrolet Oil Pan

Kevko Industrial Pans are manufactured in the United States to fit every customers specs however needed. We do offer quantity pricing. Please contact Nathan at sales@kevkoracing.com or Josh at josh@kevkoracing.com for more details and pricing options.

.....PN# IND102

OIL PUMP PICKUP TUBES



1001

Street/Strip/Road Race Pickup Tube

Works with:

7-1/2" Deep Pan on High Volume Pump

7-1/4" Deep Pan on Stock Volume Pump

5/8" Diameter Tube



1001-1-3/4

Street/Strip/Road Race Pickup Tube.

Works with:

7-1/2" Deep Pan on Stock Volume Pump

7-3/4" Deep Pan on High Volume Pump

3/4" Diameter Tube



1001-3/4

Street/Strip/Road Race Pickup Tube

Works with:

7-1/2" Deep Pan on High Volume Pump

7-1/4" Deep Pan on Stock Volume Pump

3/4" Diameter Tube



1001-1

Street/Strip/Road Race Pickup Tube

Works with:

7-1/2" Deep Pan on Stock Volume Pump

7-3/4" Deep Pan on High Volume Pump

5/8" Diameter Tube



1001-10555

Street/Strip/Road Race Pickup Tube

Works with:

7-1/2" Deep Pan on Melling Select Bolt on Pump

3/4" Tube Diameter



1002

Street/Strip/Road Race Pickup Tube

Works with:

7-1/4" Deep Pan on High Volume Pump

7" Deep Pan on Stock Volume Pump

5/8" Diameter Tube

**Note: When installing small block Chevrolet pickup tube, remember that the difference between a high volume and stock volume oil pump is 1/4."We recommend checking pickup tube to pan clearance before final install. Proper spacing should be 1/4"-3/8".*

OIL PUMP PICKUP TUBES



1002-10555

Street/Strip/Road Race Pickup Tube

Works with:

*7-1/4" Deep Pan on Melling Select Bolt on Pump
3/4" Tube Diameter*



1003

Circle Track Pickup Tube

Works with:

*7-1/2" Deep Pan on High Volume Pump
7-1/4" Deep Pan on Stock Volume Pump
5/8" Diameter Tube*



1003-1-3/4

Circle Track Pickup Tube

Works with:

*7-1/2" Deep Pan on Stock Volume Pump
7-3/4" Deep Pan on High Volume Pump
3/4" Diameter Tube*



1002-3/4 1002-3/4

Street/Strip/Road Race Pickup Tube

Works with:

*7-1/4" Deep Pan on High Volume Pump
7" Deep Pan on Stock Volume Pump
3/4" Diameter Tube*



1003-1

Circle Track Pickup Tube

Works with:

*7-1/2" Deep Pan on Stock Volume Pump
7-3/4" Deep Pan on High Volume Pump
5/8" Diameter Tube*



1003-10555

Circle Track Pickup Tube

Works with:

*7-1/2" Deep Pan on Melling Select Bolt on Pump
3/4" Tube Diameter*

**Note: When installing small block Chevrolet pickup tube, remember that the difference between a high volume and stock volume oil pump is 1/4". We recommend checking pickup tube to pan clearance before final install. Proper spacing should be 1/4"-3/8".*

OIL PUMP PICKUP TUBES



1003-3/4

Circle Track Pickup Tube

Works with:

7-1/2" Deep Pan on High Volume Pump
7-1/4" Deep Pan on Stock Volume Pump
3/4" Diameter Tube



1004-1

Street/Strip/Road Race Pickup Tube

Works with:

8" Deep Pan on Stock Volume Pump
8-1/4" Deep Pan on High Volume Pump
5/8" Diameter Tube



1004-10555

Street/Strip/Road Race Pickup Tube

Works with:

8" Deep Pan on Melling Select Bolt on Pump
3/4" Tube Diameter



1004

Street/Strip/Road Race Pickup Tube

Works with:

8" Deep Pan on High Volume Pump
7-3/4" Deep Pan on Stock Volume Pump
5/8" Diameter Tube



1004-1-3/4

Street/Strip/Road Race Pickup Tube.

Works with:

8" Deep Pan on Stock Volume Pump
8-1/4" Deep Pan on High Volume Pump
3/4" Diameter Tube



1004-3/4

Street/Strip/Road Race Pickup Tube

Works with:

8" Deep Pan on High Volume Pump
7-3/4" Deep Pan on Stock Volume Pump
3/4" Diameter Tube

**Note: When installing small block Chevrolet pickup tube, remember that the difference between a high volume and stock volume oil pump is 1/4". We recommend checking pickup tube to pan clearance before final install. Proper spacing should be 1/4"-3/8".*

OIL PUMP PICKUP TUBES



1005
Circle Track Pickup Tube

Works with:
7-1/4" Deep Pan on High Volume Pump
7" Deep Pan on Stock Volume Pump
5/8" Diameter Tube



1005-3/4
Circle Track Pickup Tube

Works with:
7-1/4" Deep Pan on High Volume Pump
7" Deep Pan on Stock Volume Pump
3/4" Diameter Tube



1005-6.5-3/4
Circle Track Pickup Tube

Works with:
6.5" Deep Pan on Stock Volume Pump
3/4" Diameter Tube



1005-10555
Circle Track Pickup Tube

Works with:
7-1/4" Deep Pan on Melling Select Bolt on Pump
3/4" Tube Diameter



1005-6.5
Circle Track Pickup Tube

Works with:
6.5" Deep Pan on Stock Volume Pump
5/8" Diameter Tube



1006
Circle Track Pickup Tube

Works with:
7" Deep Pan on High Volume Pump
6-3/4" Deep Pan on Stock Volume Pump
5/8" Diameter Tube

**Note: When installing small block Chevrolet pickup tube, remember that the difference between a high volume and stock volume oil pump is 1/4". We recommend checking pickup tube to pan clearance before final install. Proper spacing should be 1/4"-3/8".*

OIL PUMP PICKUP TUBES



1006-10555

Circle Track Pickup Tube

Works with:
7" Deep Pan on Melling Select Bolt
on Pump
3/4" Tube Diameter



1006.5-3/4-RR

Street/Strip/Road Race Pickup Tube

Works with:
6.5" Deep Pan on Stock Volume
Pump
3/4" Diameter Tube



1007

Circle Track Pickup Tube

Works with:
8" Deep Pan on Stock Volume Pump
8-1/4" Deep Pan on High Volume
Pump
5/8" Diameter Tube



1006-3/4

Circle Track Pickup Tube

Works with:
7" Deep Pan on High Volume Pump
6-3/4" Deep Pan on Stock Volume
Pump
3/4" Diameter Tube



1006.5-RR

Street/Strip/Road Race Pickup Tube

Works with:
6.5" Deep Pan on Stock Volume
Pump
5/8" Diameter Tube



1007-3/4

Circle Track Pickup Tube

Works with:
8" Deep Pan on Stock Volume Pump
8-1/4" Deep Pan on High Volume
Pump
3/4" Diameter Tube

**Note: When installing small block Chevrolet pickup tube, remember that the difference between a high volume and stock volume oil pump is 1/4". We recommend checking pickup tube to pan clearance before final install. Proper spacing should be 1/4"-3/8".*

OIL PUMP PICKUP TUBES



1008
Circle Track Pickup Tube

Works with:
8" Deep Pan on High Volume Pump
7-3/4" Deep Pan on Stock Volume Pump
5/8" Diameter Tube



1008-3/4
Circle Track Pickup Tube

Works with:
8" Deep Pan on High Volume Pump
7-3/4" Deep Pan on Stock Volume Pump
3/4" Diameter Tube



1009-10555
Street/Strip/Road Race Pickup Tube

Works with:
7" Deep Pan on Melling Select Bolt on Pump
3/4" Tube Diameter



1008-10555
Circle Track Pickup Tube

Works with:
8" Deep Pan on Melling Select Bolt on Pump
3/4" Tube Diameter



1009
Street/Strip/Road Race Pickup Tube

Works with:
7" Deep Pan on High Volume Pump
6-3/4" Deep Pan on Stock Volume Pump
5/8" Diameter Tube



1009-3/4
Street/Strip/Road Race Pickup Tube

Works with:
7" Deep Pan on High Volume Pump
6-3/4" Deep Pan on Stock Volume Pump
3/4" Diameter Tube

*Note: When installing small block Chevrolet pickup tube, remember that the difference between a high volume and stock volume oil pump is 1/4". We recommend checking pickup tube to pan clearance before final install. Proper spacing should be 1/4"-3/8".

OIL PUMP PICKUP TUBES



1010
Circle Track Pickup Tube

For use with Melling M99HVS or Kevko M77SBC Small Block Only

7-1/4" Deep Pan



1012
Circle Track Pickup Tube

For use with Melling M99HVS or Kevko M77SBC Small Block Only

8" Deep Pan



1015
Street/Strip/Road Race Pickup Tube

For use with Melling M77 or M77HV Big Block Use Only

8" Deep Pan



1011
Circle Track Pickup Tube

For use with Melling M99HVS or Kevko M77SBC Small Block Only

7" Deep Pan



1013
Circle Track Pickup Tube

For use with Melling M99HVS or Kevko M77SBC Small Block Only

7.5" Deep Pan



1016
Street/Strip/Road Race Pickup Tube

Works with:
8.5" Deep Pan on High Volume Pump
8.25" Deep Pan on Stock Volume Pump
5/8" Diameter Tube

**Note: When installing small block Chevrolet pickup tube, remember that the difference between a high volume and stock volume oil pump is 1/4." We recommend checking pickup tube to pan clearance before final install. Proper spacing should be 1/4"-3/8."*

OIL PUMP PICKUP TUBES



1016-1

Street/Strip/Road Race Pickup Tube

Works with:

8.5" Deep Pan on Stock Volume Pump

8.75" Deep Pan on High Volume Pump

5/8" Diameter Tube



1016-10555

Street/Strip/Road Race Pickup Tube

Works with:

8-1/2" Deep Pan on Melling Select Bolt on Pump

3/4" Tube Diameter



1019-10555

Street/Strip/Road Race Pickup Tube

Works with:

8.25" Deep Pan on Melling Select Bolt on Pump

3/4" Tube Diameter



1016-1-3/4

Street/Strip/Road Race Pickup Tube.

Works with:

8.5" Deep Pan on Stock Volume Pump

8.75" Deep Pan on High Volume Pump

3/4" Diameter Tube



1016-3/4

Street/Strip/Road Race Pickup Tube

Works with:

8-1/2" Deep Pan on High Volume Pump

8-1/4" Deep Pan on Stock Volume Pump

3/4" Diameter Tube



1077-1

BBC Reverse Sump Pick-up Tube

Fits Kevko 1077 Reverse Sump Pan

**Note: When installing small block Chevrolet pickup tube, remember that the difference between a high volume and stock volume oil pump is 1/4". We recommend checking pickup tube to pan clearance before final install. Proper spacing should be 1/4"-3/8".*

OIL PUMP PICKUP TUBES



F101-1
Ford 302 Circle Track
8" Pan



F102-1
Ford 351W Circle Track
8" Pan



F102-3-1
Ford 302 Circle Track Pickup Tube for
7-1/2" Deep Pan

Fits the Following Pans:
F201
F401
F501



F101-3-1
Ford 302

For 8" Deep Ford Front Sump



F102-3-1
Ford 351W Street/Strip
8" Pan



F201-1RR
302 Road Race
7.5" Pan

For Pan:
F501RR



F202-1
Ford 351W Circle Track Pickup Tube
for 7-1/2" Deep Pan

Fits the Following Pans:
F202
F402
F502

OIL PUMP PICKUP TUBES



F202-1RR
 Ford 351W Road Race
 7.5" Pan



F302-1
 Ford 460 Truck Pan Pickup Tube

Pickup Tube For Kevko F302 Truck Pan



F404-1
 Ford 302 Fox Body
 7.5" Pan



F3001-1
 Pickup tube for Kevko
 F3001 Stock Appearing Pan



F303-1
 Pickup Tube For Kevko F304 Ford
 460 Fox Body Oil Pan



F405-1
 Ford 351W Fox Body
 7.5" Pan



F3002-1
 Pickup tube for Kevko
 F3002 RR Rear Sump Pan



F304-1
 Pickup Tube For Kevko F304 Ford
 460 Fox Body Oil Pan



F406-1
 Ford 302 Street/Strip
 7.5" Pan

OIL PUMP PICKUP TUBES



F407-1
Ford 351W Street/Strip
7.5" Pan



F505-1
Ford 302 Circle Track Pickup Tube for
7-1/2" Deep Pan

Fits the Following Pans:
F505



F602-400M-1
Ford 351C Pantera
8.5" Pan



F503-1
Ford 302 Circle Track Pickup Tube for
7-1/2" Deep Pan

Fits the Following Pans:
F503



F506-1
Ford 351W Circle Track Pickup Tube
for 7-1/2" Deep Pan

Fits the Following Pans:
F506



F603-1
Ford 351C Truck
8" Pan



F504-1
Ford 351W Circle Track Pickup Tube
for 7-1/2" Deep Pan

Fits the Following Pans:
F202
F402
F502



F601-1
Ford 351C Circle Track
7.5" Pan



F606-1
Ford 351C Circle Track
8" Pan

OIL PUMP PICKUP TUBES



F607-1
Ford 351C Street/Strip
8" Pan



F800-1
2300 Circle Track
7.25" Pan

Pickup Tube for Kevko Pan F800

Strapped Block pickup tube is designed for a 1/2" Strap on Main Caps. If you have a different configuration call (800) 770 3557 for more details.



F801-1
Ford Pinto Pickup Tube

For Kevko Pan F801



F608-1
Ford 351C Street/Strip
7.5" Pan



F803-1
2300 Circle Track
5.5" Pan

For Kevko Flat Bottom Pan F803



F609-1
Ford 351C Fox Body
7.5" Pan

F800RR-1
Pickup tube for Kevko F800RR
road race oil pan.



F804-1
Factory 2300 pickup tube for Kevko
F804 or any Stock 2300 rear sump
Pans.

OIL PUMP PICKUP TUBES



F905-1
302 Pantera
8" Deep Kevko Pantera Pan F905
Centered Pickup



LS-100
LS 5" Deep Circle Track



LS-103-6.5
LS 6.5" Deep F Body Pickup Tube



F906-1
351W Pantera
8" Deep Kevko Pantera Pan F906
Centered Pickup



LS-102
LS 5" Deep Hot Rod



M101-1
Circle Track 7.5" Pan

Plate style pickup tube works with High Volume and Stock Volume Pumps. Remove existing cover and install our pickup tube. 3/8" pipe plug is included with the tube to block the standard inlet.



FE102-1
Pickup Tube For FE102



LS-103-5
LS 5" Deep F Body Pickup Tube

OIL PUMP PICKUP TUBES



M301-1

Street, Strip, Road Race pickup tube for Kevko M302 and M301 mid sump oil pans.



M305-1

Street, Strip, Road Race pickup tube for Kevko M306 and M305 mid sump oil pans.



Olds 103-1

Oldsmobile oil pan for Kevko Olds 103

7.5" Deep Pan, High Volume Pump Only



M303-1

Street, Strip, Road Race Style pickup tube for an 8" Deep Pan

Plate style pickup tube works with High Volume and Stock Volume Pumps. Remove existing cover and install our pickup tube. 3/8" pipe plug is included with the tube to block the standard inlet.



M307-1

Street, Strip, Road Race Style pickup tube for an 9" Deep Pan

Plate style pickup tube works with High Volume and Stock Volume Pumps. Remove existing cover and install our pickup tube. 3/8" pipe plug is included with the tube to block the standard inlet.

VALVE COVERS



VC203 LEFT

SBC Polished Aluminum
Polished Aluminum Valve Cover (Left)

Polished Aluminum Finish
Tig Welded Fitting Options
3-11/16" Tall Fits all rocker arm assemblies

Available with a variety of breather and oil fill options.

Note: This is the Left Side Valve Cover only. When ordering, You will need to select a VC203 Right option to complete Your kit. We also offer custom options as well. For More information on that, please call (800) 770-3557 or email our tech at josh@kevkoracing.com



VC204 Left

SBC Fabricated Aluminum Valve Cover (Left)

Brushed Finish Precision Cut and Fully Tig Welded.
Thick 3/8" Rail, .80 Construction
3-3/8" Tall Fits all rocker arm assemblies
Hardware Included
MADE IN THE USA

Available with a variety of breather and oil fill options.

Note: This is the Left Side Valve Cover only. When ordering, You will need to select a VC204 Right option to complete Your kit. We also offer custom options as well. For More information on that, please call (800) 770-3557 or email our tech at josh@kevkoracing.com



VC203 RIGHT

SBC Polished Aluminum
Polished Aluminum Valve Cover (Right)

Polished Aluminum Finish
Tig Welded Fitting Options
3-11/16" Tall Fits all rocker arm assemblies

Available with a variety of breather and oil fill options.

Note: This is the Right Side Valve Cover only. When ordering, You will need to select a VC203 Left option to complete Your kit. We also offer custom options as well. For More information on that, please call (800) 770-3557 or email our tech at josh@kevkoracing.com



VC204 Right

SBC Fabricated Aluminum Valve Cover (Right)

Brushed Finish Precision Cut and Fully Tig Welded.
Thick 3/8" Rail, .80 Construction
3-3/8" Tall Fits all rocker arm assemblies
Hardware Included
MADE IN THE USA

Available with a variety of breather and oil fill options.

Note: This is the Right Side Valve Cover only. When ordering, You will need to select a VC204 Left option to complete Your kit. We also offer custom options as well. For More information on that, please call (800) 770-3557 or email our tech at josh@kevkoracing.com

VALVE COVERS



VC205

SBC Zinc Stamped Steel Valve Covers

Two 1-1/2" Tubes Left Side



VC206

SBC Raw Stamped Steel Valve Covers

Two 1-1/2" Tubes Left Side



VC211 LEFT

Ford 289/302/351W

Polished Aluminum Finish

Tig Welded Fitting Options

3-11/16" Tall Fits all rocker arm assemblies

Available with a variety of breather and oil fill options.

Note: This is the Left Side Valve Cover only. When ordering, You will need to select a VC211 Right option to complete Your kit. We also offer custom options as well. For More information on that, please call (800) 770-3557 or email our tech at josh@kevkoracing.com



VC211 RIGHT

Ford 289/302/351W

Polished Aluminum Finish

Tig Welded Fitting Options

3-11/16" Tall Fits all rocker arm assemblies

Available with a variety of breather and oil fill options.

Note: This is the Right Side Valve Cover only. When ordering, You will need to select a VC211 Left option to complete Your kit. We also offer custom options as well. For More information on that, please call (800) 770-3557 or email our tech at josh@kevkoracing.com

VALVE COVERS



VC212

Fabricated Aluminum Valve Cover for 2300 Fords.
Billet Aluminum end plate.



VC215 RIGHT

SBC Vortec Polished Aluminum (Right)

Polished Aluminum Finish
Tig Welded Fitting Options
3-11/16" Tall Fits all rocker arm assemblies

Available with a variety of breather and oil fill options.

Note: This is the Right Side Valve Cover only. When ordering, You will need to select a VC215 Left option to complete Your kit. We also offer custom options as well. For More information on that, please call (800) 770-3557 or email our tech at josh@kevkoracing.com



VC215 LEFT

SBC Vortec Polished Aluminum (Left)

Polished Aluminum Finish
Tig Welded Fitting Options
3-11/16" Tall Fits all rocker arm assemblies

Available with a variety of breather and oil fill options.

Note: This is the Left Side Valve Cover only. When ordering, You will need to select a VC215 Right option to complete Your kit. We also offer custom options as well. For More information on that, please call (800) 770-3557 or email our tech at josh@kevkoracing.com



VC216

Aussie Speed V-6 Valve Cover

These are authentic Aussie Speed V-6 Valve Covers designed for the Vortec engine.

Get yours here without the expensive shipping cost!

These are raw finish cast aluminum. These valve covers will clear roller rockers. Comes with billet Kevko screw on fill cap and gromet for PCV.

VALVE COVER ACCESSORIES



B100
Unshielded Breather,
1 1/2" diameter.



K9028
Slip on Fill & Cap 1-3/8"

Easily slips over your breather tube, has dual o-ring seal, and two set screws to lock securely.



K9029
Weld in oil fill port with cap

-Includes Part # K9029- Weld in Port & Part # K9030- Fill Cap



B101
Shielded Breather,
1 1/2" diameter.



K9039
Slip on #12 AN 1-1/2"

Easily slips over your breather tube, has dual o-ring seal, and two set screws to lock securely.



K9030
Kevko Billet Replacement Fill Cap Only. Comes with new O-ring

Works with Kevko Products: K9028, K9029, K9040, K9090, K9087. all Kevko tanks and Valve covers

Available in Sealed or Vented Cap



K9027
Slip on #12 AN For 1-3/8" size
breather tubes

Easily slips over your breather tube, has dual o-ring seal, and two set screws to lock securely.



K9040
Slip on Fill & Cap 1-1/2"

Easily slips over your breather tube, has dual o-ring seal, and two set screws to lock securely.



K9035
Positive Seal Vented Fitting #12 AN

Easily installs in any valve cover, Simply drill 1" hole and screw together

VALVE COVER ACCESSORIES | TIMING CHAIN COVERS AND ACCESSORIES



K9037 Oil Deflector Kit
7/16" Oil Deflector Kit

Rocker arm oil deflectors with mounting hardware for 7/16" stud.

These fit SBC & SBF 289, 302, 351W



K112 Timing Cover
Chevy Timing Cover



K112A-1 Anodized Timing Cover
Anodized Zinc Silver Chevy Timing Cover - no timing bracket.



K9038 Oil Deflector Kit
3/8" Oil Deflector Kit

Rocker arm oil deflectors with mounting hardware for 3/8" stud.

These fit SBC & SBF 289, 302, 351W

Excellent, affordable, and effective way to deflect oil back onto the rocker arm ball to greatly increase valve train life!

Use with tall valve covers.



K119 Billet Timing Pointer
Have you ever degreed in your cam only to have the timing mark off on the tab? This billet aluminum pointer is adjustable to cure the problem. Fits S/B Chevy with up to 7" balancer..

ENGINE ACCESSORIES



1099 Chevrolet Mini Starter

This Tilton style mini starter is a 3 HP high torque starter which will work with all of the Kevko Power Pouch (PP) pans. A bolt kit and shim kit are included.



K9031 LS Oil Filter Adapter

Eliminates remote filter adapter and leaves oil filter in stock location.

Uses 13/16-16 thread filter nipple to accept standard LS Oil Filters. Hardware included.

Save BIG when you purchase with your Kevko Oil Pan!



K9015 SBC Motor Mounts

SBC Steel Motor Mounts Set (1-pair, 2- mounts)



K9034 LS Engine Mounts CT525

LS Engine Mounts for CT525

Comes Complete with Mounting Hardware



K9033 Ford Motor Mounts

*Pair of Ford Steel Motor Mounts.
Standard Stock Car Racing Application*

Fits 302, 351W, 351M, & 351C



ENGINE ACCESSORIES



K9052 SBC Filter Adapter

Light weight billet aluminum filter adapter. Made in the USA. Hardware Included.

Eliminates the failure-prone factory bypass

Forces 100% of engine oil through the filter

Fits SBC and BBC engines ('68-up)

Can be used with stock type spin-on oil filters

Easy 2 bolt installation

K9095 SBC Lifter Valley Baffle

Lifter valley oil baffles protect the bottom of your intake from hot oil splashing out of the lifter bores. Light-weight aluminum tray holds the lifters in their bores, preventing the loss of oil pressure or possible bearing damage in the event of push-rod or rocker arm failure.

This tray is meticulously designed to fit old & new style blocks perfectly with no modification. NO TRIMMING NECESSARY! Note- two vent holes to prevent moisture build up below the tray. This is a CHUBBS PERFORMANCE Design! You will not find a better fitting or designed tray on the market.



Mopar PUTUBE STUD

This is the pickup tube mounting bolt for the 340 / 360 Mopar

F302-S 302 PUTUBE STUD

This is the pickup tube mounting bolt for the 302 rear sump pans.

F2300-S 2.3L Ford Main Cap Stud

OEM Stud for supporting pickup tube off the main cap on all 2.3L Fords

F351W-S 351W Pickup Tube Stud

351W Main Cap Stud with pickup tube support

F351C-S 351C Pickup Tube Stud

351C Main Cap Stud with pickup tube support

TANKS



K139 Evac Tank

Kevko Air/Oil Separator Tank

This tank allows you to plumb your evac system to your exhaust eliminating the chance of pulling engine oil out of your motor causing the header/exhaust to smoke.

Inlet and Exit #12 AN fittings with 1/4" NPT Petcock drain valve.



K9085

Breather tank has an internal baffle, #12 AN fitting, 1/4" pipe bung with drain petcock.

Comes complete with B100 1-1/2" breather & hose clamp. Tank mounting holes are 6-1/2" apart. Tank dimensions are 4" wide, 5" tall, 3" deep. Easily mounts to firewall. Great way to clean up leaky valve cover breathers and messy engine compartments.



K139-212 Dual Inlet Evac Tank

Kevko Air/Oil Separator Tank

This tank allows you to plumb your evac system to your exhaust and eliminate the chance of sucking oil out of your motor causing the header/exhaust to smoke.

Dual #12AN Inlets and a Single #12AN Exit fitting, with 1/4" NPT Petcock drain valve.



K9085-212

Breather tank has an internal baffle, 2 #12 AN fitting, 1/4" pipe bung with drain petcock.

Comes complete with B100 1-1/2" breather & hose clamp. Tank mounting holes are 6-1/2" apart. Tank dimensions are 4" wide, 5" tall, 3" deep. Easily mounts to firewall. Great way to clean up leaky valve cover breathers and messy engine compartment

TANKS



K9087 Power Steering Tank

Kevko Power Steering Tank

This tank has a # 10 AN fitting bottom feed line and we offer it with the # 6 AN return line on either Right Hand or Left Hand side of the tank AS IF YOU ARE SITTING IN THE CAR AND THE TANK IS MOUNTED ON THE FIRE-WALL. (Specify RH or LH when ordering)

Select your option of a vented or non vented cap. Each cap is made in the USA with a O ring seal that eliminates and dust or dirt from finding its way into your system.

Comes with mounting hardware!

K9087-L Left Hand Inlet

K9087-LV Left Hand Inlet with Vented Cap

K9087-R Right Hand Inlet

K9087-RV Right Hand Inlet with Vented Cap



KT9090-D Deck Mount Tranny Fill Tank

Kevko Deck Mount Tranny fill tank.

#10 AN fitting

Vented Cap



KT9090-F Firewall Mount Tranny Fill Tank

Kevko Firewall Mounted Tranny Fill Tank

This works great for Stock Car & Hobby Stock Cars. Mount this tank to the firewall and plumb to your transmission fill/level plug and make life easy to fill your transmission after draining it.. we have all had tranny fluid running down our arm when trying to fill these laying on your back under the car.. Get this tank and make things clean and easy!

#10 AN port on the bottom.

Vented screw on fill cap



KR9090 Low Profile Rear End Filler Tank

Our new Kevko K9090 LOW PROFILE rear end filler tank! This has been designed by racers for racers! We created the low profile design to eliminate large chunks of dirt and debris knocking the canister loose from the decking. Also, using 100% made in America material, we designed our O ring seal cap to eliminate dirt to be sucked into the canister. Comes standard with our new innovative vented cap, works great as a rear end breather!

KR9090-10 10AN Exit

KR9090-10V 10AN Exit with Vented Cap

KR9090-12 12AN Exit

KR9090-12V 12AN Exit with Vented Cap

TRANSMISSION AND REAREND FILL KITS



KT9090 Transmission Fill Kit

These Kits have been designed to go from our K9090 Deck Mount Fill tank, to your transmission. With most racing transmissions needing the oil changed every 1-3 nights, this will be the handiest investment you can make! Save the mess and get yourself one today!

**** For you Stock Car / Hobby Stock guys, we have added a Firewall Mount Tank Kit option! ** Part # KT9090F (Specify Firewall Mount option when ordering)**

We have designed this kit to **INCLUDE EVERY FITTING NEEDED TO FIT ALL Popular transmissions on the market!** Bert "Original", Brinn "Original", Racegator, Saginaw, Falcon, Mitchell Machine, Brinn Predator, Bert Gen II.

Each Kit Comes Complete with the Following:

- Kevko K9090 Vented Filler Tank
- 3 Feet of Hose
- Installation hardware
(ALL Fittings for EVERY Transmission!)
- All Aluminum Push Lock AN Fittings

KT9090-D Kit Deck Mount Tranny Fill Kit

KT9090-F Kit Firewall Mount Tranny Fill Kit

KR9090 Rearend Fill Kit

Let Kevko take the headache of filling your Quick Change or Standard rear end away! We have designed our kit to be a complete package with everything you need to install.

Kit Covers ALL Rear-end Options!

Each kit comes with the following:

- 1 Low Profile Kevko Vented Filler Tank With #12AN Outlet
- 6 Feet of #12 AN Hose
- 1 Straight Push Lock Fitting
- 1 45 Degree Push Lock Fitting
- 1 12 AN to 12 AN Straight O-Ring Fitting (Quick Change Rear-ends)
- 1 1/2" NPT & 1- 3/4" NPT 90-degree Fitting (Fits standard or 9" Rear-ends)

EVAC / BREATHER SYSTEMS



K139 Evac Kit

Kevko has developed the most efficient oil evacuation system on the market! This kit was designed to hook to any motor and utilize existing stand pipes with no modification needed. We are now offering a kit designed for customers wanting to purchase Kevko Valve covers with the #12 already installed.

This system mounts along the firewall and connects between the valve cover and the header. Tested by engine builders in the Midwest, this will create vacuum pressure in the crankcase, reduce windage, lower oil temps and can free up to 7 horse power!

WE ALSO OFFER CUSTOM VALVE COVERS WITH FILL & FITTING OPTIONS.

Kevko K139 Crate Kit: K9027 & K9028 Slip on Fill & #12AN for 1-3/8" breather tubes, K139-1 Check Valve, K139-2 Weld in Pipe Fitting for header, 6' of #12 hose K123 & clamp, 2- straight #12AN fittings K116, 1- 90 degree #12AN fitting K117, and the K139 Evac Tank.

Kevko K139 Open Kit: K9039 & K9040 Slip on Fill & #12AN for 1-1/2" breather tubes, K139-1 Check Valve, K139-2 Weld in Pipe Fitting for header, 6' of #12 hose K123 & clamp, 2- straight #12AN fittings K116, 1- 90 degree #12AN fitting K117, and the K139 Evac Tank.

Kevko K139 Kit: (No Valve Cover Adapters) K139-1 Check Valve, K139-2 Weld in Pipe Fitting for header, 6' of #12 hose K123 & clamp, 2- straight #12AN fittings K116, 1- 90 degree #12AN fitting K117, and the K139 Evac Tank.

Kevko K139 Kit With VC-203 Valve Covers: Select this option and receive the complete K139 Evac Kit that will plumb directly to the VC-203 polished aluminum Valve Covers that are included!

Check out our K9035 Positive Seal Vented Fitting that easily mounts in any valve cover by simply drilling a 1" hole and screwing the fitting together.

K9085 Breather Kit

This breather kit is **IMCA LEGAL** and works for guys running the 602 or 604 Crate motor!

This is NOT an Evac System.. This IS a Valve Cover breather set-up.

No Welding or Modifications needed.. VERY EASY TO INSTALL!

Select your desired kit above before adding to cart.

Kevko K9085 Crate Kit: K9027 & K9028 Slip on Fill & #12AN for 1-3/8" breather tubes, 3' of #12 hose (K123), 2- K117 90 degree #12 AN fittings, and the K9085 Breather Tank.

Kevko K9085 Open Kit: K9039 & K9040 Slip on Fill & #12AN for 1-1/2" breather tubes, 3' of #12 hose (K123), 2- K117 90 degree #12 AN fittings, and the K9085 Breather Tank.

Kevko K9085 Kit: (No Valve Cover Adapters) 3' of #12 hose (K123), 2- K117 90 degree #12 AN fittings, and the K9085 Breather Tank.

Kevko K9085 Kit With VC-203 Valve Covers: Select this option and receive the complete K9085 Breather Kit along with a set of VC-203 Polished aluminum valve covers that your breather kit will plumb directly to.

Check out our K9035 Positive Seal Vented Fitting that easily mounts in any valve cover by simply drilling a 1" hole and screwing the fitting together.

EVAC / BREATHER SYSTEMS



K9085-2.3 2.3L Ford Breather Kit

Kevko has designed this kit strictly with the 2300 Ford motor in mind. The breather kit will attach to the Kevko VC212 Valve Cover or any valve cover with a 1/2" NPT Port.

Our Crank Case Only kit works with our newly designed K9104 Fitting. This fitting is a tapered aluminum fitting that presses into the breather port on the 2300 blocks. Once installed, this fitting can be plumbed to the breather tank.

The Dual breather kit gives you the best of both worlds. The 2300 is notorious for having problems breathing, and this handy kit allows you to solve all of those problems in one convenient setup.

- K9085-2.3 VC** Breather Kit for Valve Cover
- K9085-2.3 CC** Breather Kit for Crank Case
- K9085-2.3 Dual** Breather Kit for Valve Cover & Crank Case

K139 2.3 2.3L Ford Evac Kit

Kevko has designed this kit strictly with the 2300 Ford motor in mind. The evac kit will attach to the Kevko VC212 Valve Cover or any valve cover with a 1/2" NPT Port.

Our Crank Case Only kit works with our newly designed K9104 Fitting. This fitting is a tapered aluminum fitting that presses into the breather port on the 2300 blocks. Once installed, this fitting can be plumbed to the breather tank.

The Dual evac kit gives you the best of both worlds. The 2300 is notorious for having problems breathing, and this handy kit allows you to solve all of those problems in one convenient setup.

- K139-2.3 VC** Evac kit for Valve Cover
- K139-2.3 CC** Evac kit for Crank Case
- K139-2.3 Dual** Evac kit for Valve Cover & Crank Case

TOOLS



K138 Quick Change Drain Pan

This quick change drain pan was designed to be an affordable piece that is heavy duty piece that will last for years!

12.00 in. Length, 10.25 in. Width, 3.75 in. Height



K8001 15" STACKABLE JACK STAND

These light weight stack-able Jack Stands are 15" tall giving you that extra inch to get the LR off the ground when on jack stands. These are rated at 1,500 # capacity each. Durable Powder Coat Finish. They come in Black, or Neon Orange.

Custom Colors Available on purchases of 4 or more for a small up-charge. (call or email for further info)

SOLD INDIVIDUALLY!



K7001 1" x 12" Wheel Socket **K7001-12 1" x 12" Wheel Socket**

Specify 6" or 12" long extended wheel socket when ordering.

6 point socket so it wont damage lug nuts. 1/2" Drive with detent hole for use with impact wrenches. Durable NEON ORANGE Powder-coat finish



K118 Aluminum Carb Hat

Lightweight spun aluminum carburetor hat. Works great for washing or storing carburetors.

TOOLS | TRAILER & GARAGE ACCESSORIES



K8017 TOE ALIGNMENT BRACKETS

Aluminum Toe Alignment Plates. Use these to easily measure the toe-in/out on any vehicle. Comes complete with tape measures.

Durable Powder Coat Finish

Offered in Neon Orange or Neon Yellow.



K8023 MULTIPURPOSE TOOL HOLDER

Multipurpose tool holder. This will greatly improve the organization of all your miscellaneous wrenches, screw drivers, pliers, sockets, etc.

Durable Powder Coat Finish

Offered in Blue, Black or White



K8017-2 MINI TOE ALIGNMENT BRACKETS

Aluminum Toe Alignment Plates designed for use on an 8" or 10" tire. Works great with Mini Sprints, Micro Sprints, and Mini Mods. Each kit comes with 2 Toe Plate and 2 Tape Measures.

.090 Construction raw aluminum finish



K9026 Universal Engine Lift Plate

Durable Powder Coat Finish

Offered in Blue, Black & NEON ORANGE.



K8010 AIR TOOL RACK

Holds up to 10 of your favorite air tools. Fits most air fittings

Durable Powder Coat Finish

Offered in Blue, Black or White



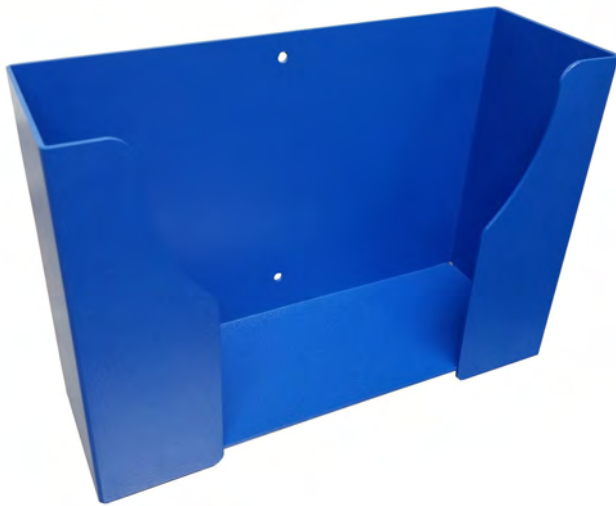
K8004 BOX RAG HOLDER

Handy box rag holder, easily mounts to your wall. Holds your standard box of rags to easily dispense them.

Durable Powder Coat Finish

Offered in Blue, Black or White

TRAILER & GARAGE ACCESSORIES



K8002 First Aid Kit Holder

This is a handy way to ensure your First Aid Kit does not become lost or miss placed when you need it most! Hang one of these in your shop, garage, trailer or ALL of the above! We offer this kit WITH or without the First Aid Kit to make it easy for you.

Dimensions: 10-3/8" Wide X 3-3/8" Deep X 7" Tall

Offered in 3 durable powder coat finishes, Black, Blue or White.



K8005 Fuel Trough

Add this to any trailer or shop to securely hold two 5/6 gal. Fuel Jugs.

Durable Powder Coat Finish

Offered in 3 colors, Black, Blue or White



K8006 5 LB FIRE EXTINGUISHER HOLDER

Holds 5lbs Fire Extinguisher

Simply mounts in many locations.
Also available with Fire Extinguisher when ordering.

Durable Powder Coat Finish

Offered in Red or White



K8018 2 LB / 2.5 LB FIRE EXTINGUISHER HOLDER

Holds 2lbs or 2.5lbs Fire Extinguisher

Easily mounts and a must have in any race trailer or shop! Also available with Fire Extinguisher when ordering.

Durable Powder Coat Finish

Offered in White or Red

TRAILER & GARAGE ACCESSORIES



K8007 10 LB FIRE EXTINGUISHER HOLDER

Holds 10lbs Fire Extinguisher

*Easily mounts in any location.
Also available with Fire Extinguisher when ordering.*

Durable Powder Coat Finish

Offered in Red or White



K8008 12 Qt. Oil Shelf

This slick oil shelf holds 12 Quarts of any product! A must have for your garage, trailer, or any spot that you want to keep organized!

Durable Powder Coat Finish

Offered in Black, Blue or White



K8009 GLOVE VENDER

Holds a box of rubber gloves. Makes dispensing your rubber gloves a breeze!

Durable Powder Coat Finish

Offered in Black, Blue or White



K8014 Vertical 6 Spray Can Holder

This product nicely stores 6 aerosol cans in a vertical fashion. A must have for any garage, shop or trailer!

Easily mounts with the integrated upper and lower mounting hole/tab.

Offered on 3 durable powder coat finishes- Black, Blue or White.

TRAILER & GARAGE ACCESSORIES



K8015 6 Can Aerosol Holder

This product nicely stores 6 aerosol cans in a horizontal fashion. A must have for any garage, shop or trailer! Easily mounts with the integrated upper and lower mounting hole/tab.

Offered on 3 durable powder coat finishes, Black, Blue or White.



K8024 AIR HOSE HANGER WITH CUBBY

Hang your air hose and hold your attachments.

10" Wide X 7" Tall X 6" Deep

Offered on 3 durable powder coat finishes, Black, Blue or White.



K8016 3 Can Aerosol Holder

This product nicely stores 3 aerosol cans in a horizontal fashion. A must have for any garage, shop or trailer! Easily mounts with the integrated upper and lower mounting hole/tab.

Offered on 3 durable powder coat finishes, Black, Blue or White.



K8027 Vertical 3 Spray Can Holder

This product nicely stores 3 aerosol cans in a vertical fashion. A must have for any garage, shop or trailer!

Easily mounts with the integrated upper and lower mounting hole/tab.

Offered on 3 durable powder coat finishes, Black, Blue or White.

TRAILER & GARAGE ACCESSORIES



K8031 ELECTRICAL CORD RACK

Offered on 3 durable powder coat finishes, Black, Blue or White.



K8032 DUCTTAPE HOLDER

Keep track of your duct tape with this handy holder.

Offered on 3 durable powder coat finishes, Black, Blue or White.



K8033 BROOM HOLDER

Use this to hang your broom up and clear up the clutter in your garage, shop or trailer

Offered on 3 durable powder coat finishes, Black, Blue or White.



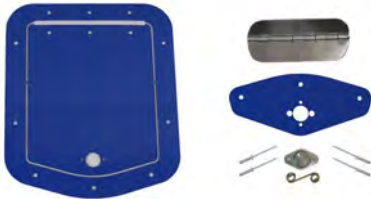
K8011 WRENCH RACK

Holds a full set of standard SAE & Metric wrenches. A must have for keeping your wrenches organized!

Durable Powder Coat Finish

Offered in Black

ACCESS PANELS

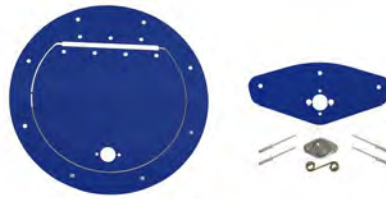


K8019
6" X 6" ACCESS PANEL

Use this to cool trap door over your fuel cell or any other compartment for a nice clean finish to your tin/body work!

Durable Gloss Powder Coat Finish

Offered in Gloss Blue, Gloss Black, Gloss White & Gloss Silver



K8021 7" ACCESS PANEL

Perfect for over your Fuel Cell opening, Nice Clean Finished Look!

Durable Gloss Powder Coat Finish

Offered in Gloss Blue, Gloss Black, Gloss White, & Gloss Silver



K8022
12" X 12" ACCESS PANEL

Great addition to any body/ tin project for a clean finished look! Use this access panel for a nice opening to your fuel cell, oil cooler, or whatever you may choose.. Comes complete with zues fastner and hinge. Durable Gloss Powder Coat Finish.

Pictured in Gloss Blue. Also available in Gloss Black, Gloss White, and Gloss Silver.



K8020
6" X 12" ACCESS PANEL

Nice addition to any tin or body project to clean up an opening.

Durable Gloss Powder Coat Finish

Offered in Gloss Blue, Gloss Black, Gloss White & Gloss Silver

RADIATORS | MOD RODS



Kevko Single Pass Aluminum Radiators

These Chevy-style radiators have driver's side upper inlets, passenger side lower outlets, and can be ordered in a variety of widths.

Universal Chevy radiators makes it easy for budget-minded racers to get a professional-quality aluminum racing radiator. These high performance radiators feature furnace-brazed construction, two rows of large 1" aluminum tubes, billet filler necks and a maximum number of fins per inch for great heat transfer.

Available in 24", 25", 27", 29" and 31" widths



Kevko Double Pass Aluminum Radiator

Available in 22", 24", 26", 28" and 31" widths



Kevko Mod Rod

Great for cruising the pits, parades or just a fun toy!

- 6 Horsepower Engine
- Hydraulic Disc Brake
- Powder Coated Frame
- Hoosier Race Tires

Call for custom options, shipping info or local pick-up.
1-800-770-3557

* Built to order- Allow 2-3 week lead time *

** PRICE INCLUDES SHIPPING TO LOWER 48 **

DISCOUNT FOR LOCAL PICK!







LOOKING FOR SOMETHING COMPLETELY CUSTOM

The best way to create a custom oil pan is to fill out the worksheet our website and mail, fax or email the completed form to Kevko Racing Oil Pans & Components. If you have any questions, do not hesitate to Contact Us.

800-770-3557

FAX: 507-238-4190

EMAIL:

sales@kevkoracing.com





STOCKING DISTRIBUTORS

- Competition Products** - Oshkosh, WI
- Speedway Motors** - Lincoln, NE
- Performance Bodies & Parts** - Cedar Falls, IA
- CNC Motorsports** - Brookings, SD
- Day Motorsports** - Tyler, TX
- Jobbers Warehouse Supply** - Minneapolis, MN
- Smiley's** - Mesquite, TX
- KMJ Performance** - Story City, IA
- Schroeder Racing Products** - Iowa Falls, IA
- Lou Fegers Racing** - Delano, MN
- Motorsports of Kansas City** - Kansas City, KS
- Precise Racing Products** - Wichita, KS
- Motorsports Warehouse** - Boone, IA
- DirtTrack Supply** - Watertown, SD
- RHRS Swag** - Jamestown, ND
- Dirt Car USA** - Eureka, IL
- McGunegill Engine** - Muncie, IN
- KS Engineering** - Albert Lea, MN
- Action Engineering** - Byron, MN
- Chubbs Performance** - St. Cloud, MN
- Schwanke Engines** - Springfield, MN
- Extreme Enterprises** - Cecil, WI
- Crate Insider** - Rutherfordton, NC
- Motor State Distributing** - Watervliet, MI



915 North Orient Street
Fairmont, Minnesota 56031
800-770-3557

www.KevkoRacing.com



KEVKO RACING OIL PANS & COMPONENTS

915 North Orient Street | Fairmont, Minnesota 56031
800-770-3557 | **FAX** 507-238-4190

SALES sales@kevkoracing.com | **TECH SUPPORT** josh@kevkoracing.com

www.KevkoRacing.com