

oCO

Thank you for purchasing  
an Oco2 camera!

## Description of Device



## Technical Specifications

### Dimensions:

3.68 × 3.49 × 1.61 inches  
93.5 × 88.7 × 41 mm

**Weight:** 6.7 Oz / 190 g

**Video:** H.264 encoding,  
up to Full HD  
(1920 × 1080)  
at 30 frames/sec

**Zoom:** 8x digital

**Field of view:**  
140° (diagonal)

**Audio:** Built-in  
microphone/speaker

**Wireless network:**  
Wi-Fi, 802.11, b/g/n  
(2.4 and 5GHz support)

**Bluetooth:** Bluetooth  
LowEnergy 4.0

**Night vision:** High  
powerinfrared LED

**Wireless safety:**  
WEP/WPA/WPA2/  
WPA-PSK/WPA2-PSK

**Operation system:**  
Android/iOS/  
Windows/MacOS

**Set up:** Android/iOS

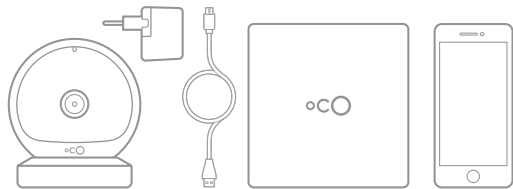
**Motion detection:** Yes

**Power:** MicroUSB  
5V DC, 2.0A

## Before You Get Started

Please make sure you have everything you need to set up the Oco2:

1. Oco2 Full HD Wi-Fi camera with magnetic stand.
2. AC power adapter and Micro-USB cable.
3. The Quick Start Guide.
4. An iPhone or iPad running iOS 7 or later (not included) or an Android device running Android 4.1 or later (not included).



## Download the App

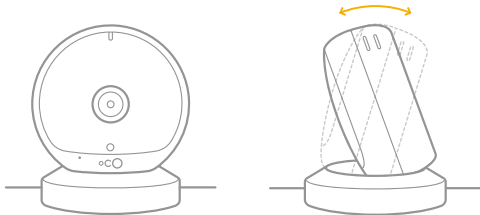
Download the Oco mobile app from the Apple App Store or Google Play Store. Then, launch the app and create your account.



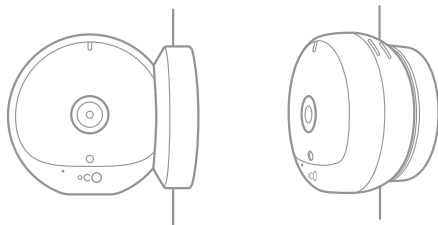
## Set Up Oco2

You can set up the camera in two ways:

1. **Place it on a flat surface** using a magnetic base and adjust the desired tilt angle:

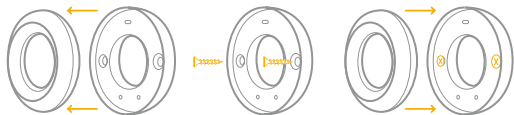


2. **Mount it on a wall** using the magnet stand as a wall mount:



You can mount the camera on a wall in three ways:

- a. Attach the Oco2 camera using the magnetic stand to any metal surface.
- b. Attach the Oco2 camera on a flat wall using the enclosed 3M sticker.
- c. Attach the Oco2 camera on the wall with the enclosed screws:



- Separate the mount into two parts.
- Screw the mount to the wall using the enclosed screws and dowels.
- Put the second part of the magnetic stand over the wall mount.
- Attach the camera by the back or side part.

3. **Connect the camera to the power outlet** using the enclosed power adapter and Micro-USB cable.



## Add Oco2 Camera to Your Account

1. Wait until the orange-light indicator ● on the camera starts blinking.
2. Connect your smartphone or tablet to the same Wi-Fi network that you are going to use with the Oco2 camera.
3. Click the **Add a new camera** or **+** icon in the Oco app to add the camera, and follow the instructions.

Connecting the camera can take up to 1 minute. The status light will glow a steady green ● when the configuration procedure is successfully completed.



**Note:** To make the camera work in another Wi-Fi network, it is necessary to reset the settings, and repeat the setup procedure. To reset the settings, hold down the RESET button on the back panel of the camera for 3 seconds until the camera beeps.

## Add Cloud Recording Service

Sometimes you need to add more people to your Oco account, or you need to store data for a longer period. That is where our extended plans come in handy. You can activate the extended cloud recording and the enhanced features (such as additional users per account) by choosing one of the price plans. Or you can continue with our basic free plan.

## Grant Access to Other Users

You can use this feature if you wish to grant access to your Oco2 camera to other users. In your Oco app, choose **Camera** and then tap to **Camera settings** → **Grant access**

## Set Up Hybrid Storage

Our cameras give you the flexibility to store footage in the Cloud and locally. With Oco2, you can use a microSD card as a local storage. *Please note that the events snapshots are stored in the Cloud even if you use microSD card and basic free plan.*

Insert the microSD card into the Oco2 camera. Reboot the camera by turning the power off and then on again. The microSD card will be automatically formatted for use in the Oco2 camera. The Timeline with archive recordings should appear on the camera view screen in the Oco app.



**Note:** To store the video archive on a microSD card, we recommend you use a microSD card with Speed Class 6 or higher. Oco2 supports microSD cards up to 128Gb.

## Adjust Notifications Settings

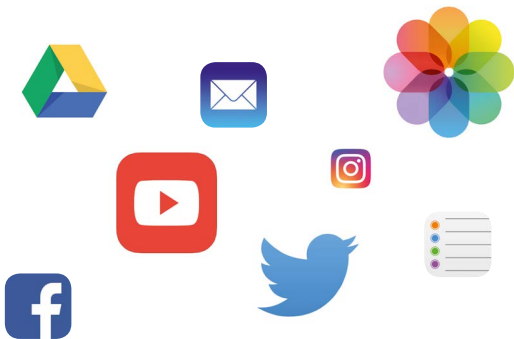
You can choose which types of notifications you would like to receive – e-mail, push, or both. In your Oco app, choose **Camera** and tap to **Camera settings** → **Notifications (Settings)**

## Adjust the Sensitivity of the Motion/Sound Sensors

Oco2 uses an intelligent self-learning algorithm to avoid false notifications. But if you'd like to adjust sensitivity of the sensors manually, open your Oco Mobile app, choose **Camera** and tap **Camera settings** → **Motion/sound**

## Integrate Other Smart Devices via IFTTT

With IFTTT, your Oco2 camera can communicate with other smart devices or function according to your geolocation, weather, or Moon phase. You can enhance the capabilities of the Oco2 by using ready recipes or by creating your own at [ifttt.com/oco\\_camera](https://ifttt.com/oco_camera)



## FCC Statement

This equipment has been tested and found to comply with the limits for a Class B digital device, pursuant to Part 15 of the FCC Rules. These limits are designed to provide reasonable protection against harmful interference in a residential installation. This equipment generates, uses and can radiate radio frequency energy and, if not installed and used in accordance with the instructions, may cause harmful interference to radio communications. However, there is no guarantee that interference will not occur in a particular installation. If this equipment does cause harmful interference to radio or television reception, which can be determined by turning the equipment off and on, the user is encouraged to try to correct the interference by one or more of the following measures:

- Reorient or relocate the receiving antenna.
- Increase the separation between the equipment and receiver.
- Connect the equipment into an outlet on a circuit different from that to which the receiver is connected.
- Consult the dealer or an experienced radio/TV technician for help.

**FCC Radiation Exposure Statement.** This equipment complies with FCC RF radiation exposure limits set forth for an uncontrolled environment. This transmitter should be installed and operated with a minimum distance of 20 centimeters between the radiator and your body and must not be collocated or operating in conjunction with any antenna or transmitter.



This device complies with Part 15 of the FCC Rules. Operation is subject to the following two conditions: (1) this device may not cause harmful interference, and (2) this device must accept any interference received, including interference that may cause undesired operation.

**Warning.** Changes or modifications to this unit not expressly approved by the party responsible for compliance could void the user's authority to operate the equipment.

## Déclaration de la FCC à propos des interférences

Cet appareil a été testé et déclaré conforme aux limites imposées aux appareils électroniques de classe B, définies à la section 15 de la réglementation de la FCC. Ces normes sont destinées à assurer une protection raisonnable

contre les interférences nuisibles dans un environnement résidentiel. Cet appareil produit, utilise et peut émettre des fréquences radio et, s'il n'est pas installé et utilisé conformément aux instructions, provoquer des interférences gênantes pour les communications radio. Cependant, tout risque d'interférences ne peut être totalement exclu : si cet appareil provoque des interférences lors de la réception d'émissions de radio ou de télévision (il suffit, pour le constater, de mettre l'appareil successivement hors, puis de nouveau sous tension), l'utilisateur devra prendre les mesures nécessaires pour les éliminer. À cette fin, il devra:

- Réorienter ou déplacer l'antenne de réception.
- Augmenter la séparation entre l'équipement et le récepteur.
- Brancher l'équipement sur une prise de courant reliée à un circuit différent de celui sur lequel le récepteur est branché.

- Consulter le revendeur ou un technicien radio/TV expérimenté pour obtenir de l'aide.

**Déclaration d'exposition aux radiations.** Cet équipement est conforme aux limites d'exposition aux radiofréquences de la norme RSS-102 d'IC, établies pour un environnement non contrôlé. Cet équipement ne doit pas être placé ni utilisé de sorte que l'émetteur se trouve dans un rayon inférieur à 20 cm entre celui-ci et votre corps. Cet appareil est conforme à la section 15 de la réglementation FCC. Son utilisation est soumise aux deux conditions suivantes: (1) ce matériel ne doit pas générer d'interférences ; (2) ce matériel doit accepter toute réception d'interférence, y compris les interférences pouvant générer un fonctionnement indésirable.

**Attention!** Le fabricant ne peut être tenu responsable des interférences radio ou TV provoquées par des modifications non autorisées

apportées à cet appareil. De telles modifications peuvent annuler le droit d'utilisation de l'appareil par l'utilisateur.

**Déclaration concernant les normes d'IC.** Cet appareil numérique de la classe B est conforme à la norme NMB-003 du Canada. Cet appareil est conforme à(aux) norme(s) RSS exempté(s) de licence d'Industrie Canada. Son fonctionnement est sujet aux deux conditions suivantes : (1) cet appareil ne peut pas provoquer d'interférence nuisible et (2) cet appareil doit accepter toute interférence reçue, y compris des interférences pouvant entraîner un fonctionnement non désiré.

For detailed guidelines, please visit

[getoco.com/help](https://getoco.com/help)

If you have any questions on the installation or working of the Oco2 camera, please call customer service at 1-888-683-8950 (English only) or e-mail us at [support@getoco.com](mailto:support@getoco.com)

The camera has a one-year guarantee period.  
See the details at [getoco.com](https://getoco.com)