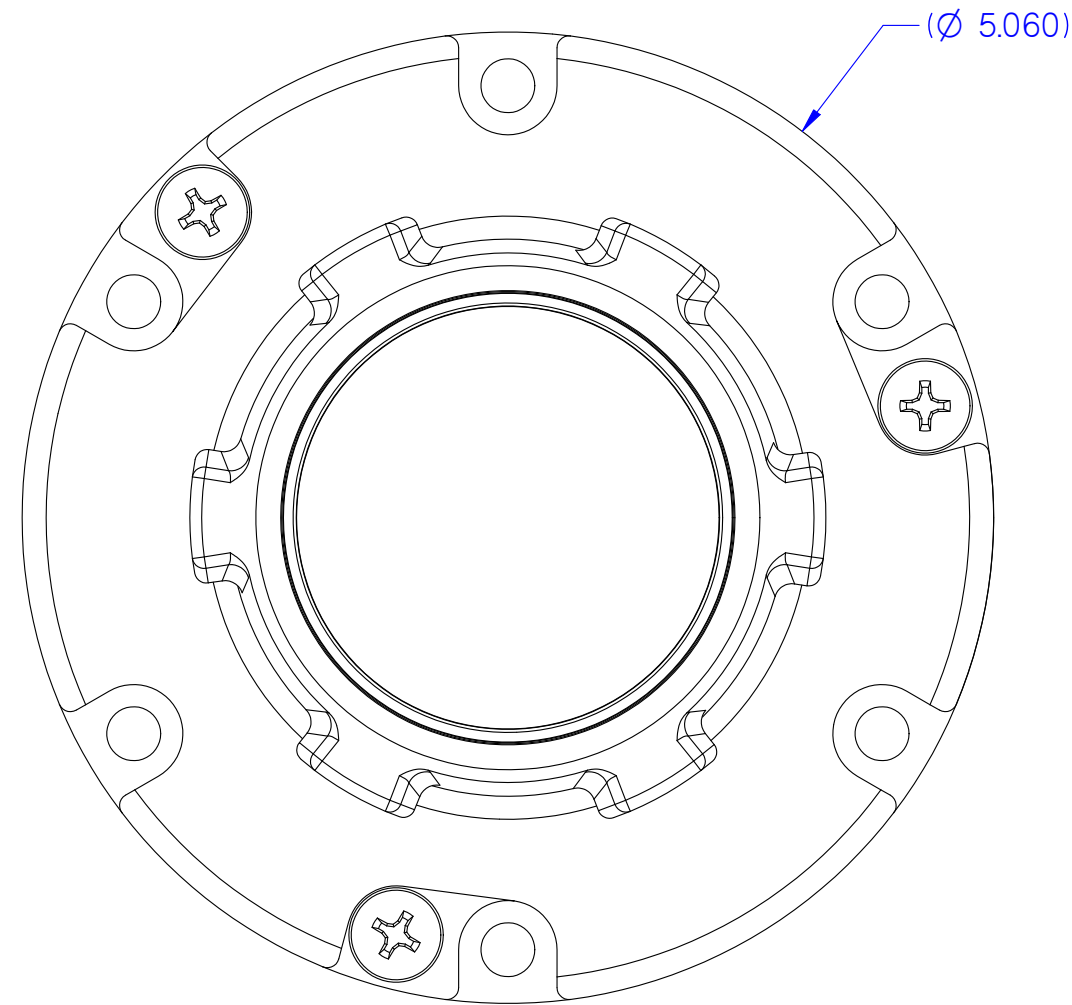
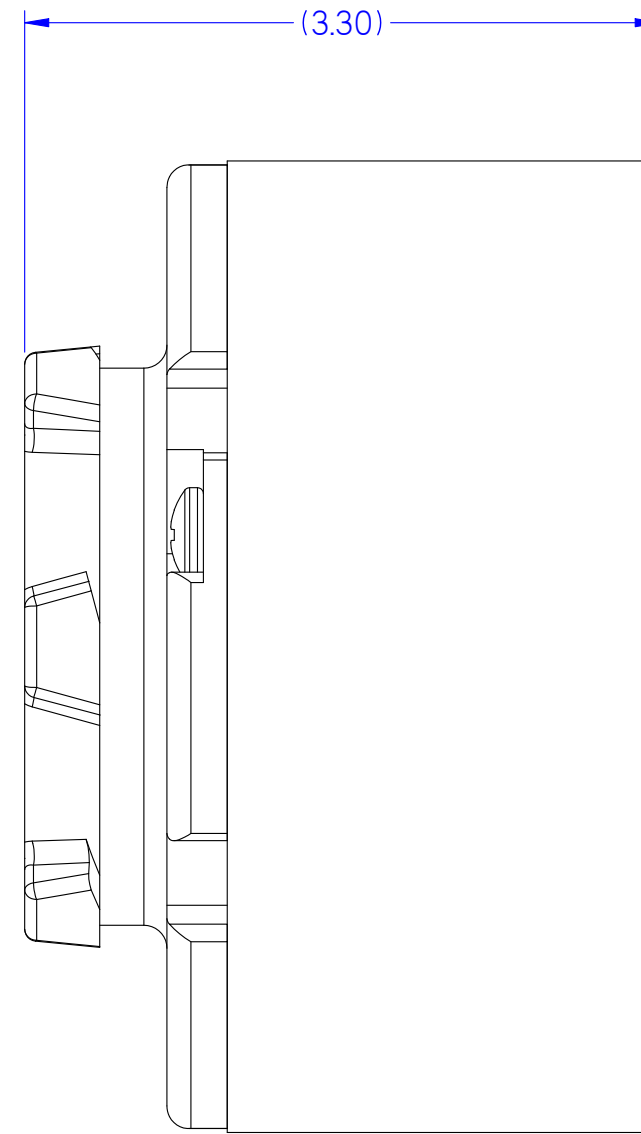


CHG BY		CHK BY		RELEASE		REVISIONS		DATE		APPROVED	
				REV		DESCRIPTION					



SHOWN WITHOUT PROTECTIVE CAP



## WIGGINS PART NUMBER VR316 ENVELOPE DRAWING

- 3 RATED FLOW: 10 GPM TO 300 GPM
- 2 MATES WITH VR301 NOZZLE OR EQUIVALENT
- 1 OPERATING PRESSURE: 60 PSIG, PROOF PRESSURE: 125 PSIG, BURST PRESSURE: 250 PSIG

NOTES: UNLESS OTHERWISE SPECIFIED

THIS DRAWING IS PROTECTED UNDER COPYRIGHT LAW AND IS THE PROPERTY OF ADEL WIGGINS GROUP, TRANSDIGM INC. DATA CONTAINED HEREIN IS PROPRIETARY TO ADEL WIGGINS GROUP, TRANSDIGM INC. THIS DRAWING AND/OR ANY PART OF THE DATA CONTAINED HEREIN MAY NOT BE COPIED, DUPLICATED OR RELEASED FOR MANUFACTURING OR SALE OF EQUIPMENT OUTSIDE OF ADEL WIGGINS GROUP, TRANSDIGM INC. OR AFFILIATES WITHOUT THE WRITTEN CONSENT OF ADEL WIGGINS GROUP, TRANSDIGM INC.  
REV. 12/95

FIND NO	QTY REQD	PART OR IDENTIFYING NO	NOMENCLATURE OR DESCRIPTION	MATERIAL	MATERIAL SPEC	FINISH	FINISH SPEC
PARTS LIST							
			UNLESS OTHERWISE SPECIFIED	DRAWN			
			DIMENSIONS ARE IN INCHES	CHECK			
			TOLERANCES ON	DESIGN			
			ANGLES ± 2°	MFG ENGR			
			DECIMALS .XX ± .03	QUALITY			
			DECIMALS .XXX ± .010	APPROVED			
			INTERPRET SPC FLAGS IN ACCORDANCE WITH ADEL WIGGINS GSP 569				
			ALL FILLETS, CORNERS AND EDGES R0.18/0.05				
				CUSTOMER OR GOVT INSP APPROVAL			
			NEXT ASSY				
			SURFACE FINISH	INTERPRET DWG PER MIL-STD-100			

<b>TRANSDIGM</b>		ADELWIGGINS GROUP LOS ANGELES, CA 90022	
TITLE <b>VR316 REMOTE CONNECTION ENVELOPE DRAWING</b>			
SIZE	FSCM NO	DWG NO	REV
D	79326		
SCALE	2 / 1	EST WT	4.6 LB
		SHEET	1 OF 1