

Parts list

Item	Description	Part number	Quantity	Item	Description	Part number	Quantity
1	Screw, tapping ³⁾		4	25	Insert, coupler ⁶⁾	340349	1
2	Washer, lock ³⁾		8	26	Yoke ⁷⁾		1
3	Screw, machine ³⁾		8	27	Pin, roll ⁵⁾		1
4	Housing ³⁾		1	28	Piston		1
5	Hose, grease	340067	1	29	Battery, indicator ⁴⁾		1
6	Coupler, grease	308730 ⁶⁾	1	30	Battery connector ⁴⁾		1
7	Screw, M3x6 ⁴⁾		6	31	PCB ⁴⁾		1
8	Washer, m3 lock ⁴⁾		6	32	Trigger		1
9	Cover, head		1	33	Cylinder, grease	339820	1
10	Ring, retaining ⁵⁾		2	34	Switch ⁴⁾		1
11	Washer, 0.24 x 0.67 in ⁵⁾		2	35	Gasket (copper) ^{1) 5)}		1
12	Bearing, roller ⁵⁾		1	36	Plug, check ¹⁾		1
13	Gear, output		1	37	Spring, check ¹⁾		1
14	Head and bearing assembly ⁵⁾		1	38	Ball, check, 3/8 in ¹⁾		1
15	Gear, output pinion		1	39	Gasket ¹⁾	336523	1
16	Gear, planet (2nd stage)		3	40	Plug		1
17	Gear, internal		1	41	Battery, 14.4V, li models 58A, C	343432	1
18	Gear, sun (2nd stage)		1	42	battery, 14.4V, li models 586B, D	343500	2
19	Gear, planet (1st stage)		1	43	Charger, battery (120 V AC/60hz)	343501	1
20	Washer ⁴⁾		2	44	Charger, battery (230 V 50hz)	Not shown	1
21	Motor mount ⁴⁾		1	45	Case, carrying	Not shown	1
22	Screw, M3x16 ⁴⁾		4	46	Bleed valve ²⁾	Not shown	1
23	Motor (w/sun gear) ⁴⁾	393795-27	1	47	Spring, trigger	Not shown	1
24	Holster		1	48	Spring, bleed valve ²⁾	Not shown	1
					O-ring ²⁾	Not shown	1

1) Repair kit 393795-6, check valve kit.

2) Repair kit 393757, bleed valve kit.

3) Repair kit 393815-01, housing kit.

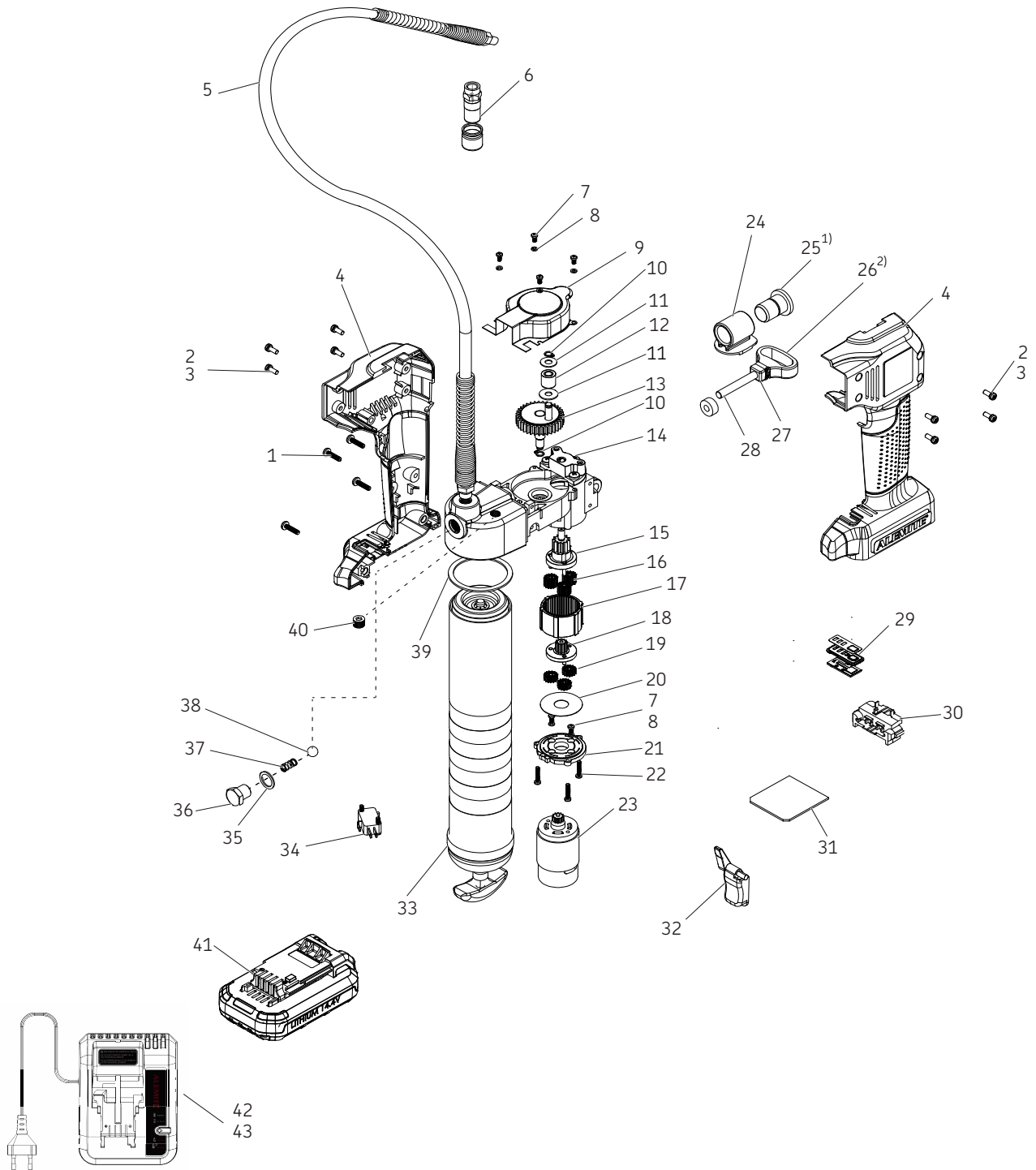
4) Repair kit 393815-02, electrical kit. Must be replaced by authorized service center only. Warranty void if service center not used.

5) Repair kit 393795-12, head kit. Must be replaced by authorized service center only. Warranty void if service center not used.

6) Optional part. Only suitable substitute 6304-B coupler, grease. Item 25 must be removed when using this coupler. 340338 relief valve with gasket.

7) Support yoke during roll pin removal.

Exploded view



1) Only suitable substitute 6304-B Coupler, grease. Item 25 must be removed when using this coupler. 340338 Relief valve with gasket.
 2) Support yoke during roll pin removal.