

INSTALLATION GUIDE

NETWORK SETUP

IMPORTANT: Read Before Using.



Tech Requirements

It is important before you start the network setup process, that you have the sensor bar powered on and connected to your PC with the LAN cable provided to you in the shipping box.

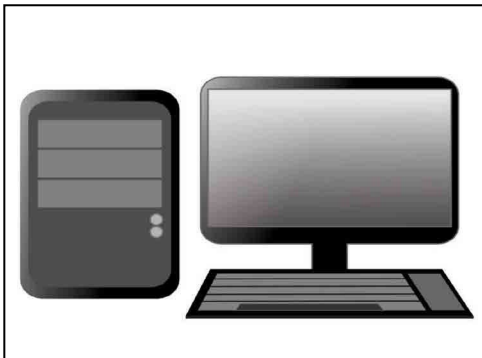
Make sure the LAN cable is DIRECTLY connected to your PC in the back Ethernet port. Do NOT have it connected to the USB Adapter or a hub.



Sensor



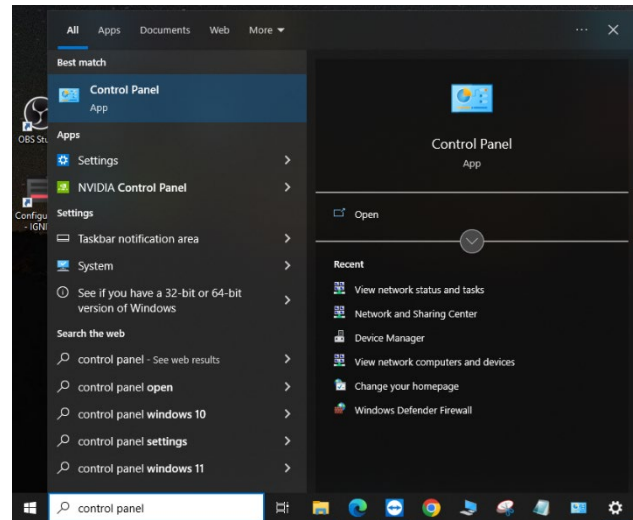
LAN Cable (Ethernet)



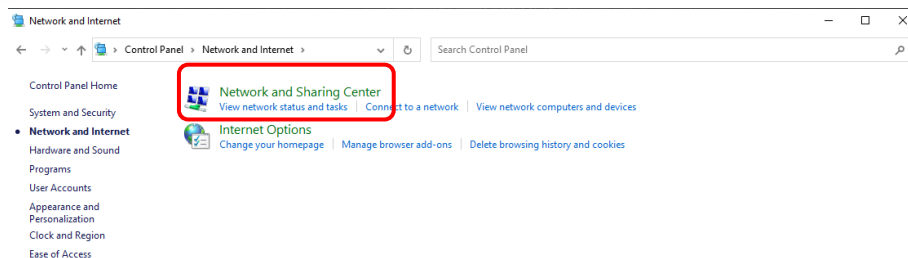
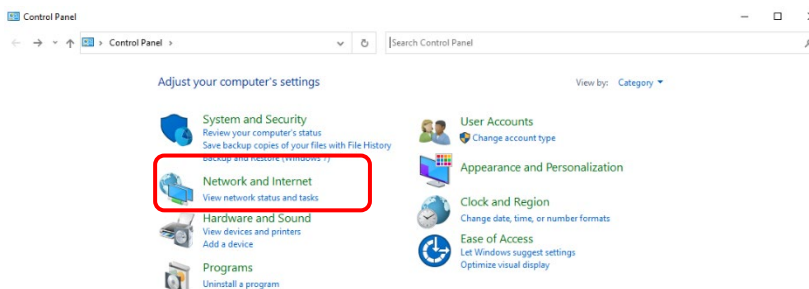
PC

Setup

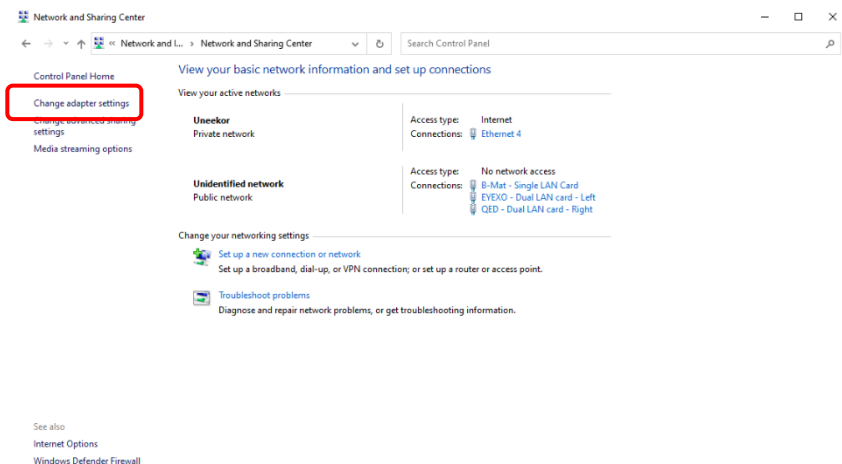
1 Type “Control Panel” in the search bar on the bottom left of your tool bar and click on the app.



2 In the Control Panel window, find and click on the “Network and Internet” icon, then click on the “Network and Sharing Center” icon.

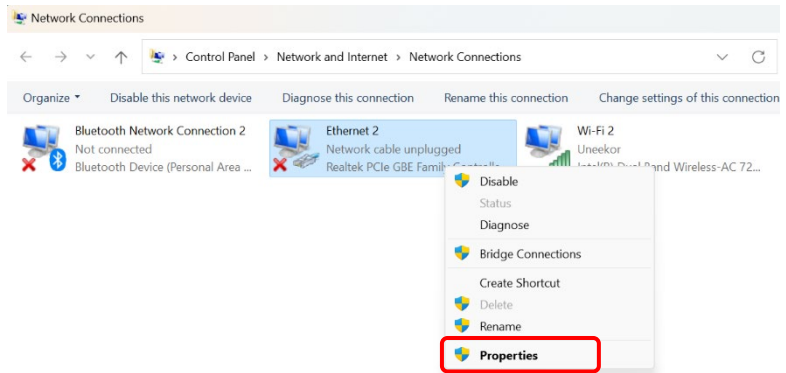


3 In the Network and Sharing Center window, find and click the “Change Adapter Settings” option. (Located in the left side column).

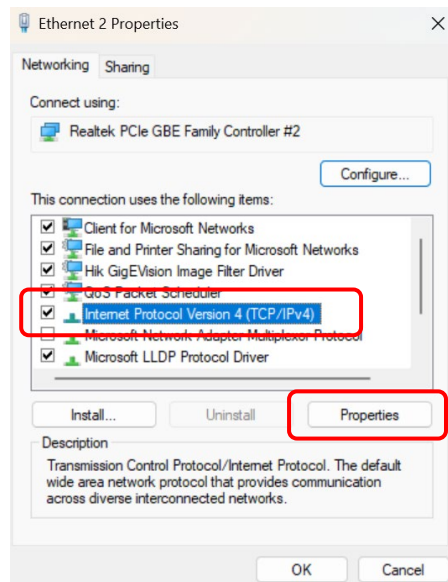


Setup

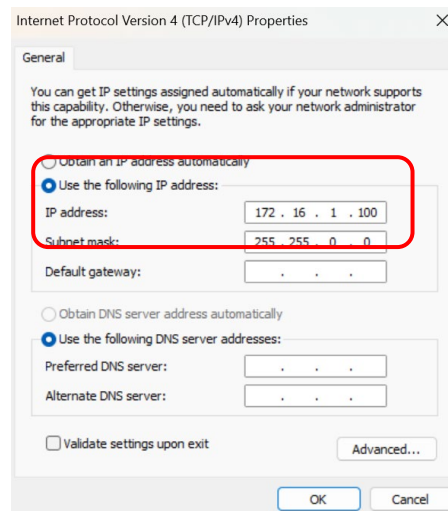
4 After clicking “Change Adapter Settings” you will see the “Network Connections” window. In this window right click the “Ethernet” icon and click the “Properties” option.



5 In the “Ethernet Properties” window, scroll down and click on “Internet Protocol Version 4 (TCP/IPv4)” once to highlight. Then click the “Properties.”

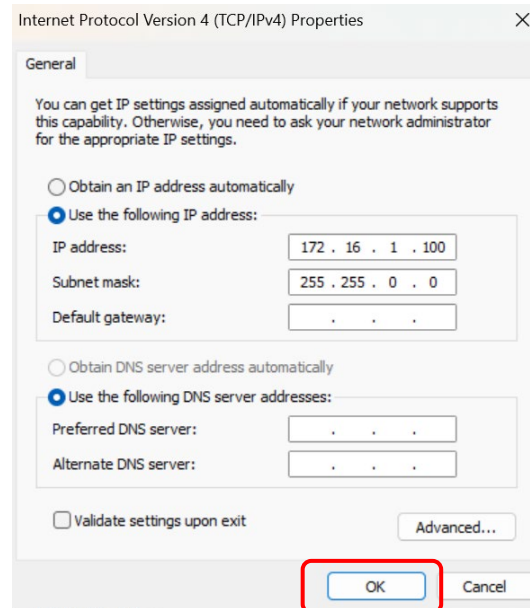


6 In the “Internet Protocol Version 4 (TCP/IPv4)” properties window click the “Use the following IP address” circle and type in 172.16.1.100 in the IP address row. Next click on the “Subnet Mask” Row and it should automatically change it to 255.255.0.0



Setup

- 7 Lastly, click “Ok” on the bottom right and the network set up is complete.



MASTER YOUR PASSION

Uneekor, Inc.

15770 Laguna Canyon Rd
Suite 100 Irvine, Ca 92618

Tel: 1-949-328-7790

sales@uneekor.com

support@uneekor.com



Uneekor © 2023 All Rights Reserved