

INSTALL GUIDE

SWING OPTIX™

for QED Ignite Users

UNEEKOR

CONTENTS

TABLE OF

0.1	INCLUDED ITEMS	<u>PA GE</u> 3
0.2	CAMERA INSTALLATION	<u>PA GE</u> 4
0.3	QED_IGNITESO INSTALL	<u>PA GE</u> 6
0.4	MVS DRIVER UPDATE	<u>PA GE</u> 7
0.5	LICENSE AND ACTIVATION	<u>PA GE</u> 8
0.6	LIGHTING ENVIRONMENT	<u>PA GE</u> 9
0.7	SWING OPTIX ADJUSTMENTS	<u>PA GE</u> 10-15



0.1 INCLUDED ITEMS

The following items are included in the package. Please make sure they are all present and accounted for.

USB 3.0 CABLE (2)



CAMERA (2)



CAMERA LENSE (2)



ACCESSORIES (2 sets)



NOTE:
If any part is missing,
please contact support.

0.2 CAMERA INSTALLATION

STEP ONE

Please find the camera, bracket, and the 4 screws that came with the package.

STEP TWO

Screw in the 4 screws through the bracket onto the camera.

STEP THREE

Attach the camera with the bracket to the tri pod stand. The camera will need to be rotated 90 degrees as shown in the photo. Attach the USB 3.0 power cable to the camera. It is recommended to tie the USB 3.0 power cable to one of the legs of the tri pod.

STEP FOUR

Connect the other end of the USB 3.0 power cable directly to a USB 3.0 port on your PC. Please confirm you see the light blinking next to the "Power" text on the cameras.

NOTE:

The cameras will heat up to 43 - 46 degree Celcius. This is normal operating temp.

STEP ONE



STEP TWO



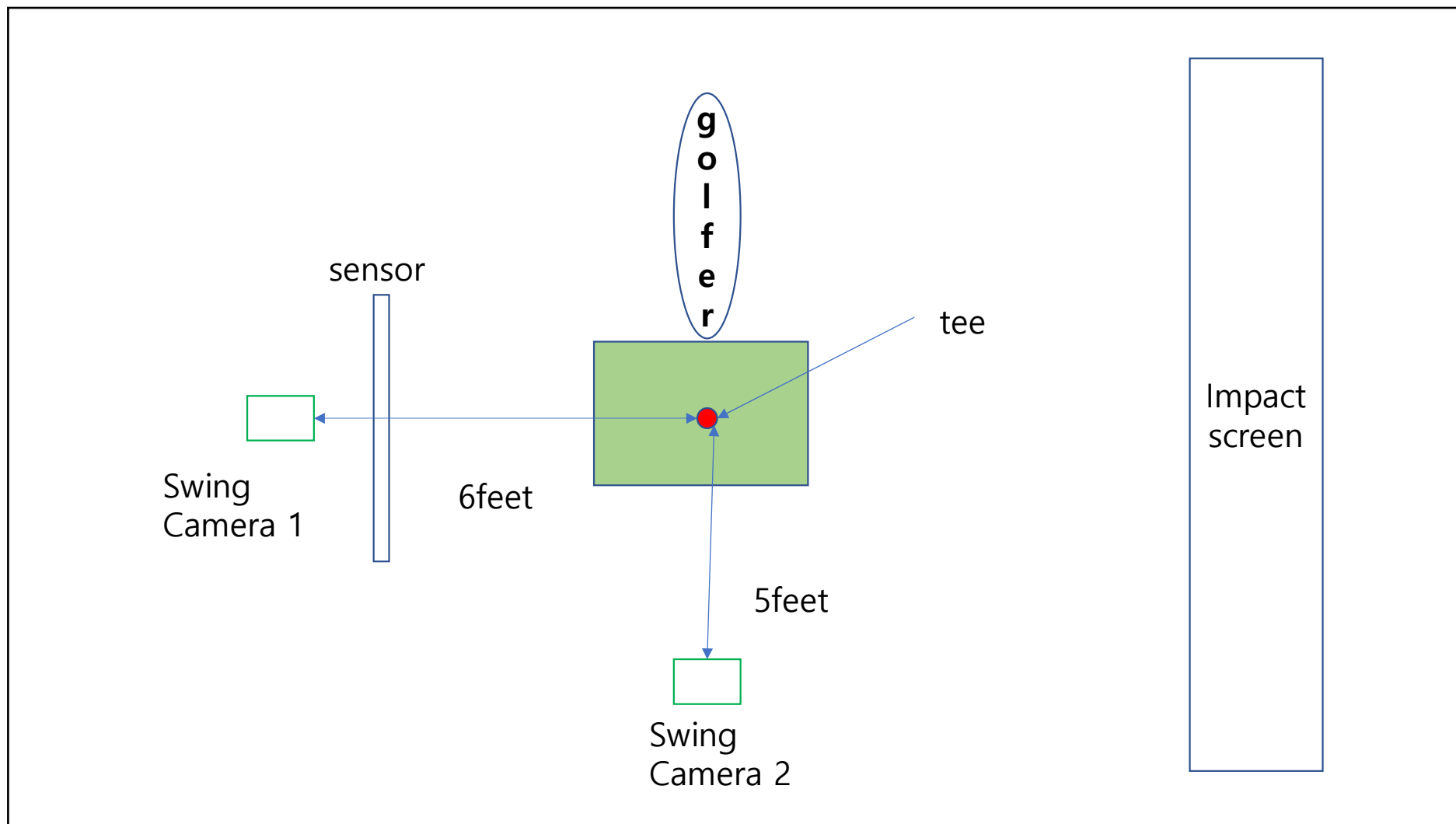
STEP THREE



STEP FOUR



0.2 CAMERA INSTALLATION



0.3 QED_IGNITESO INSTALL

STEP ONE

Find and run the IgniteSO setup file. You will receive the setup file through email after purchasing. Once the setup windows comes up, click the “NEXT>” button to proceed.

STEP TWO

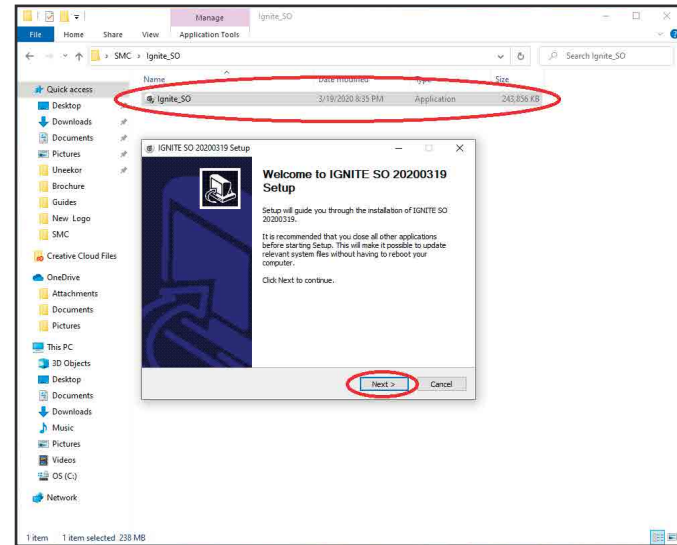
In the next window, make sure the “Destination Folder” is selected to “C:\QED_IGNITE” and then click “NEXT>.”

Once all the QED_IgniteSO files are installed, the “MVS” driver installer will appear. See next page for steps.

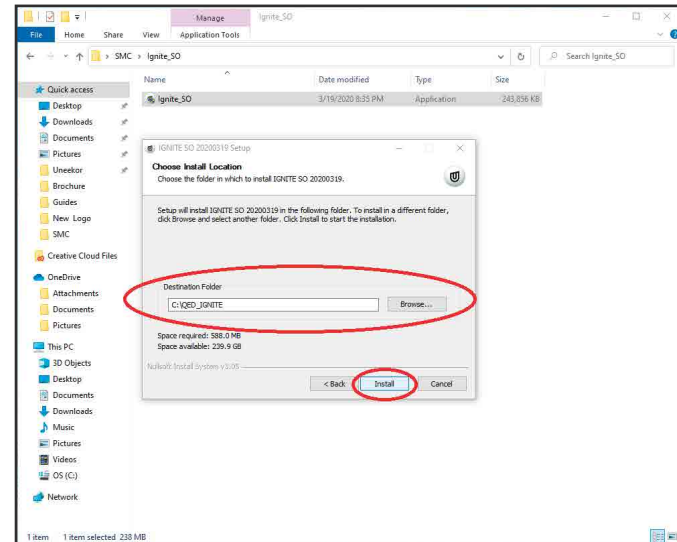
Install Link :

<http://bit.ly/qed-ignite>

STEP ONE



STEP TWO



04 MVS DRIVER UPDATE

STEP ONE

Once the MVS Driver setup window appears, click the “Start Setup” button to proceed.

STEP TWO

In the options window, confirm “C:\Program Files (x86)\MVS” is shown in the “Directory” and the other options are all checked. Then click the “Next” button.

STEP THREE

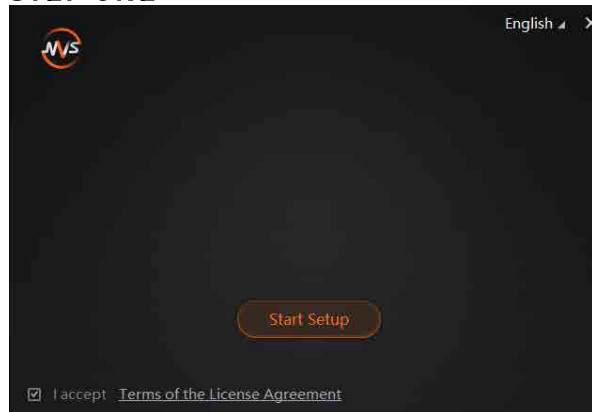
The driver installation is initiated. Please wait several minutes for this process.

STEP FOUR

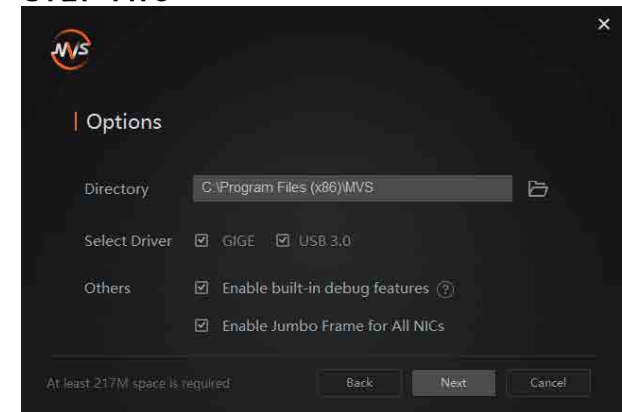
Once the installation process is complete, uncheck the “Run the Client” box and click “Finish.”

At the end of the IgniteSO software install and MVS driver update, a window for “Activation” will appear. See next page for steps.

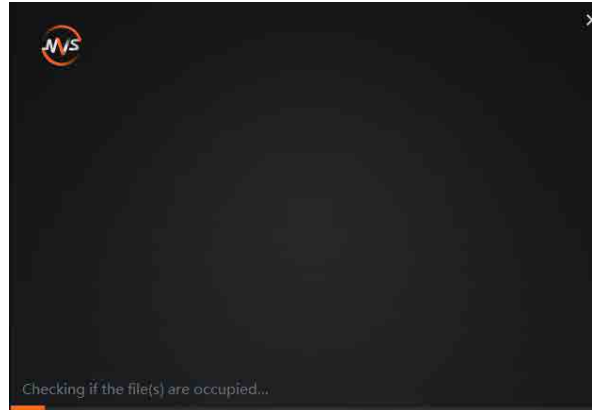
STEP ONE



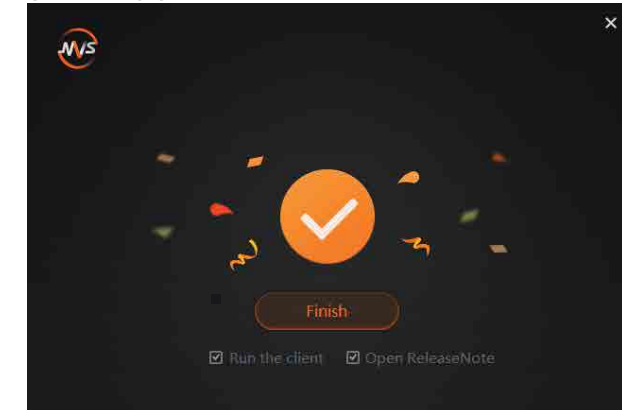
STEP TWO



STEP THREE



STEP FOUR



05 LICENSE & ACTIVATION

STEP ONE

You will need to click the “Browse” button and search for the QED_30000XXXX license key file (you will receive the license key file along with tracking number after purchase).

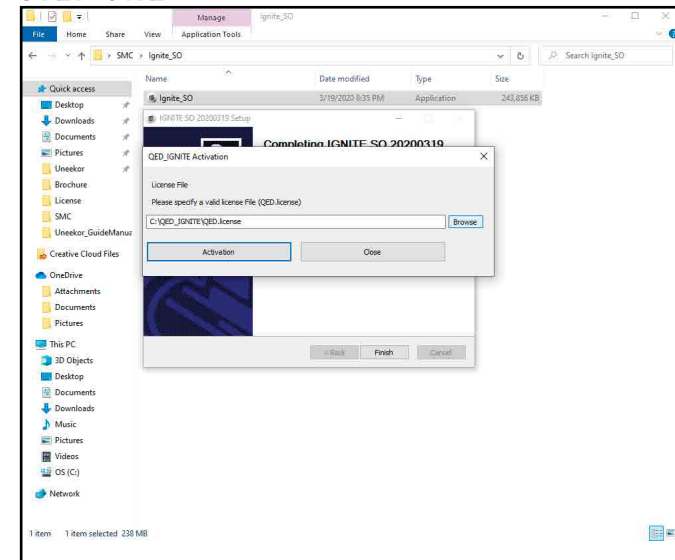
STEP TWO

Once the license file has been found, click open and then click the “Activation” button to activate your license key. Please wait for the “Success” message for the activation to be complete.

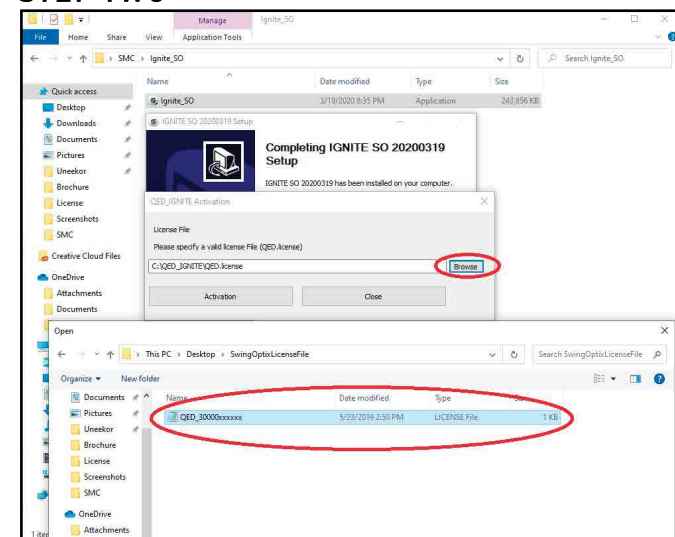
NOTE:

It is important to have internet access for the Activation process.

STEP ONE



STEP TWO



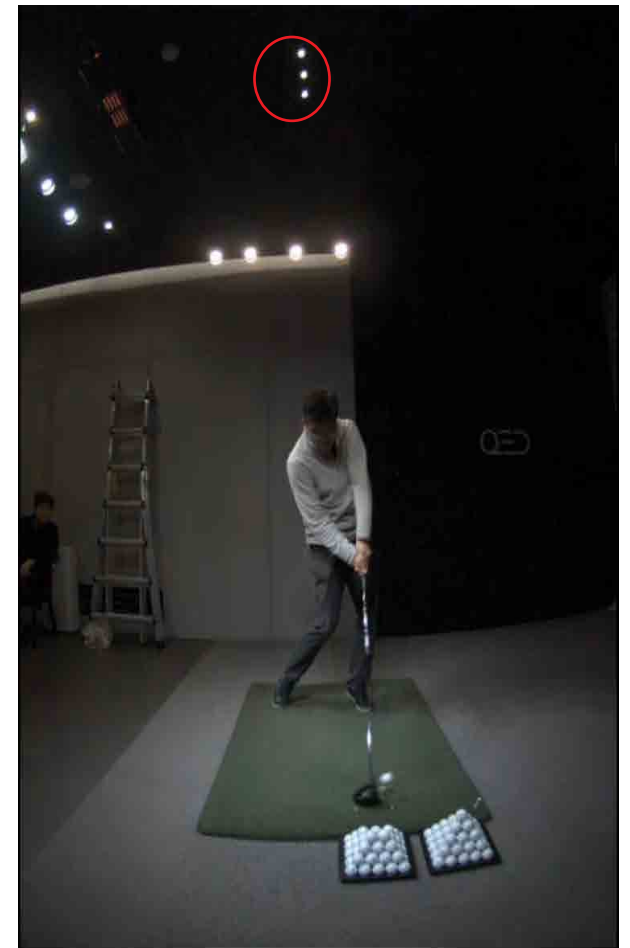
0.6 LIGHTING ENVIRONMENT

Besides your normal background room lighting, additional lighting is required to optimize the Swing Optix. It is recommended to add a minimum of 8 15W or higher, non flickering LED light bulbs on a track rail with fixtures. This will help with exposure and eliminating blurring of the club.

Ex: 11 non flickering LEDs were used in the environment below.



NOTE:
It is important to angle the light fixtures away from the projector light path.



07 SWING OPTIX ADJUSTMENTS

STEP ONE

To adjust the camera exposure and gamma settings, click on the "Adjustment" button in the "Swing Motion" tab. There are 4 different modes for exposure and gamma settings.

Please make sure QED_IgniteS0 software, MVS Driver update, and license activation has been completed before you proceed to "Adjustments." Find and run the QED_IgniteS0 program.

The screenshot displays the QED_IgniteS0 software interface. At the top, the status bar shows "NOBALL" and "DRIVER - m/s - meter" with a "Club1" selection. The main interface is divided into several sections. On the left, there are control buttons and a list of metrics: SMASH FACTOR, BALL SPEED, CLUB SPEED, FACE to PATH (deg.), FACE ANG. (deg.), and CLUB PATH (deg.). Below these are two diagrams of a golf club head and ball, illustrating "BACK SPIN (rpm)", "LAUNCH ANG. (deg.)", "SIDE ANG. (deg.)", and "SIDE SPIN. (rpm)". The central part of the interface features a video feed of a golfer in a dark room, with the "Swing Motion" tab selected and circled in red. To the right of the video feed is a toolbar with various icons and a prominent yellow "Adjustment" button, also circled in red. At the bottom, there are five data panels for BALL SPEED (m/s), LAUNCH ANG. (degree), SIDE ANG. (degree), CLUB SPEED (m/s), and CLUB PATH (degree).

0.7.1 SWING OPTIX ADJUSTMENTS

EASY 1

Exposure is set at 500 and Gamma is set at 0.6 for "Easy 1."
The blur of the club is minimal but the lighting will show up darkest in this mode.

READY | DRIVER - m/s - meter | Club1 | List | Club | Setting | Quit

Exposure: 500
Gamma: 0.6

Easy1 | Easy2 | Easy3 | Easy4

BACK SPIN (rpm) +1751
LAUNCH ANG. (deg.) 7.8
SIDE SPIN. (rpm) +126
SIDE ANG. (deg.) L 2.5
FACE ANG. (deg.) -3.0

Swing Motion | Club Path | Physic Panel

1/8 | 1/2 | 1/1
LIVE
REPLAY

RUN 25.4 meter
LAUNCH ANG. 7.8 degree
SIDE TOTAL L 4.6 meter
TOTAL 233.9 meter
SIDE ANG. L 2.5 degree



0.7.2 SWING OPTIX ADJUSTMENTS

EASY 2

Exposure is set at 700 and Gamma is set at 0.6 for "Easy 2."
There is a little bit of blur in the driver shots, but most irons shots will show minimal blur. Lighting is brighter than "Easy 1" mode.

QED | **READY** | DRIVER - m/s - meter | Club1 | + | + | + | + | List | Club | Setting | Quit

Exposure: 700
Gamma: 0.6

Easy1 | **Easy2** | Easy3 | Easy4

BACK SPIN (rpm) +1708
LAUNCH ANG. (deg.) 13.8
SIDE ANG. (deg.) R 2.0
SIDE SPIN. (rpm) +326
FACE ANG. (deg.) 2.1

Front | Side | Top | Swing Motion | Club Path | Physic Panel

1/8 | 1/2 | 1/1

LIVE
REPLAY

RUN 18.1 meter
LAUNCH ANG. 13.8 degree
SIDE TOTAL R 29.2 meter
TOTAL 268.7 meter
SIDE ANG. R 2.0 degree



0.7.3 SWING OPTIX ADJUSTMENTS

EASY 3

Exposure is set at 700 and Gamma is set at 0.6 for “Easy 2.”
There is a little bit of blur in the driver shots, but most irons shots will show minimal blur. Lighting is brighter than “Easy 1” mode.

NOBALL | DRIVER - m/s - meter | Club1

Exposure: 1500
Gamma: 0.6

Easy1 | Easy2 | **Easy3** | Easy4

BACK SPIN (rpm) +1803
LAUNCH ANG. (deg.) 12.8
SIDE SPIN. (rpm) +344
SIDE ANG. (deg.) L 1.3
FACE ANG. (deg.) -1.3

Front | Side | Top | Swing Motion | Club Path | Physic Panel

1/8 | 1/2 | 1/1

LIVE
REPLAY

RUN 18.0 meter
LAUNCH ANG. 12.8 degree
SIDE TOTAL R 14.1 meter
TOTAL 267.9 meter
SIDE ANG. L 1.3 degree



0.7.4 SWING OPTIX ADJUSTMENTS

EASY 4

Exposure is set at 3000 and Gamma is set at 1.5.
The lighting will look brightest in this mode. Due to increasing the exposure and gamma to this level, some blurring of the club will occur.
The frames per second also decreases in this mode.

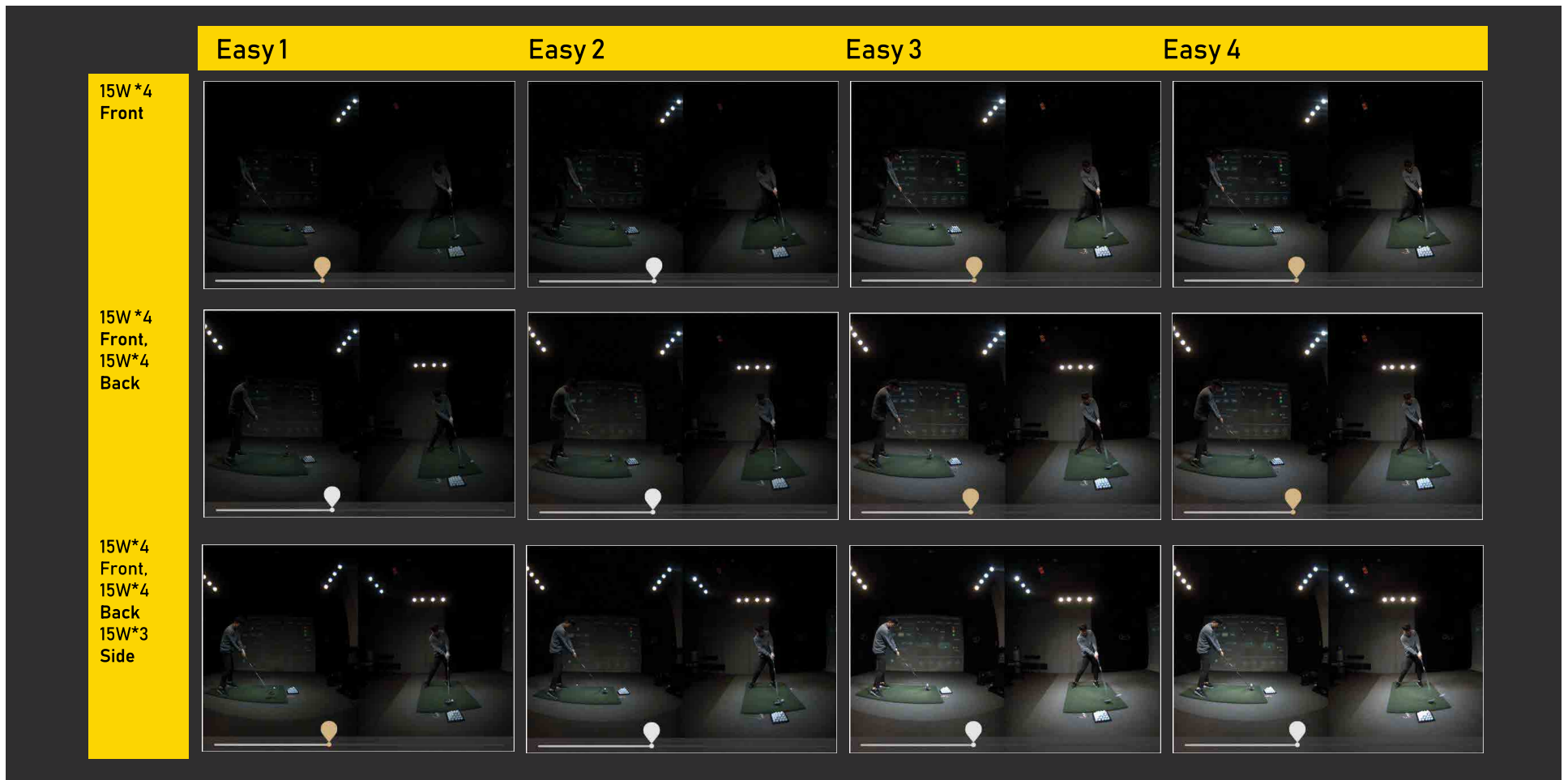
The screenshot displays the Swing Optix software interface. At the top, the mode is set to 'NOBALL' and the club is 'DRIVER - m/s - meter'. The 'Club1' selection is active. The interface includes sliders for 'Exposure: 300' and 'Gamma: 1.5'. Below these are buttons for 'Easy1', 'Easy2', 'Easy3', and 'Easy4', with 'Easy4' circled in red. The main display area shows a golf swing in progress, with various data points: BACK SPIN (+2145 rpm), LAUNCH ANG. (14.9 deg.), SIDE ANG. (R 0.4 deg.), and SIDE SPIN. (+712 rpm). A bottom summary bar displays: RUN 14.2 meter, LAUNCH ANG. 14.9 degree, SIDE TOTAL R 40.8 meter, TOTAL 265.7 meter, and SIDE ANG. R 0.4 degree.



0 7.5 SWING OPTIX ADJUSTMENTS

OVERVIEW

You will need to find the right settings for your environment. This will also depend on your lighting environment.



POWER FOR EVERY GOLFER

Uneekor, Inc.

26249 Enterprise Court
Lake Forest, CA 92630

Tel: 1-949-328-7790

sales@uneekor.com

support@uneekor.com



UNE EKOR